



LIGHTWEIGHT LOW PROFILE HARD TRI-FOLD TONNEAU COVER

(2020-2024+ GLADIATOR JT)

INSTALLATION INSTRUCTIONS

CONTENTS

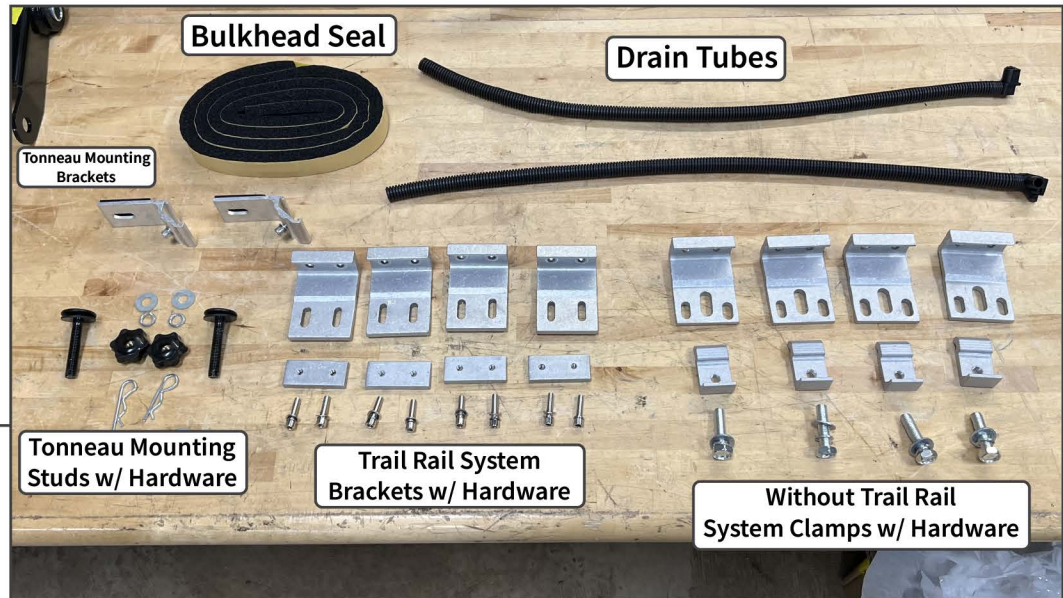
- (1) Tonneau Cover
- (1) LH Side Rail
- (1) RH Side Rail
- (1) Bulkhead Seal
- (2) Corrugated Drain Tubes
- (2) Tonneau Mounting Brackets
- (4) Tonneau Clamps (without Trail Rail System)
- (4) Trail Rail Mounting Brackets w/ Threaded Blocks & Allen Bolts
- (2) Tonneau Mounting Studs w/ Washers & Knob Nut

TOOLS REQUIRED

- 10, 17mm Sockets
- Ratchet
- Isopropyl Alcohol
- Microfiber Cloth
- 5mm Allen Key

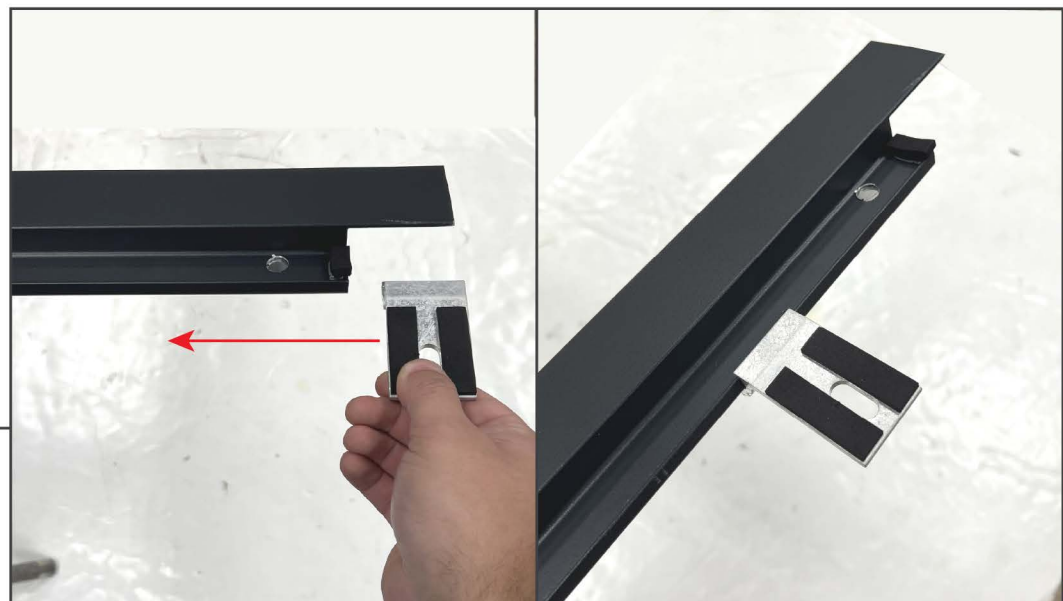


STEP 1

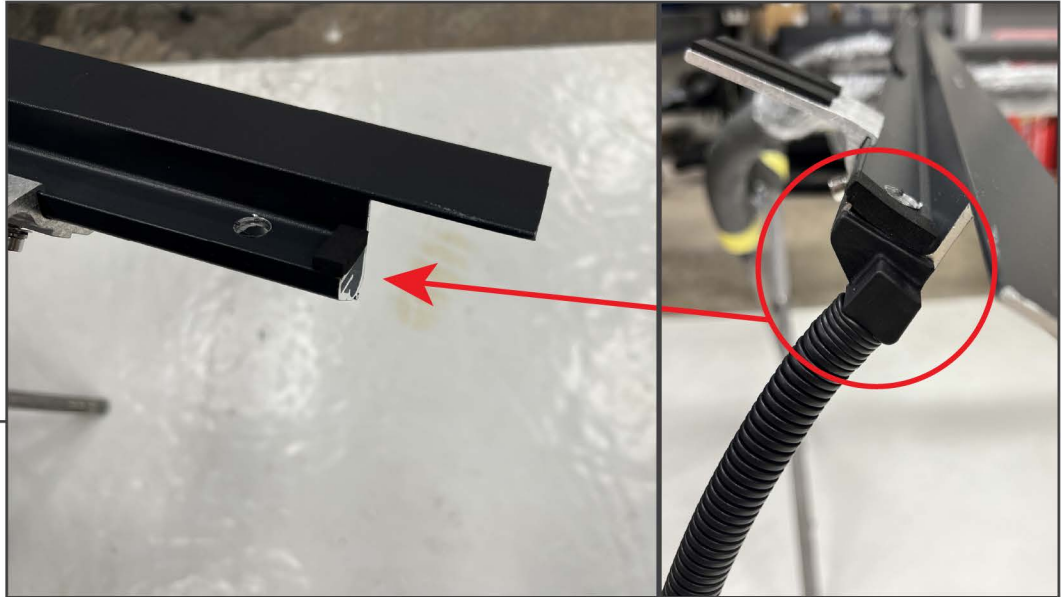


Lay out and identify all tonneau cover components.

STEP 2

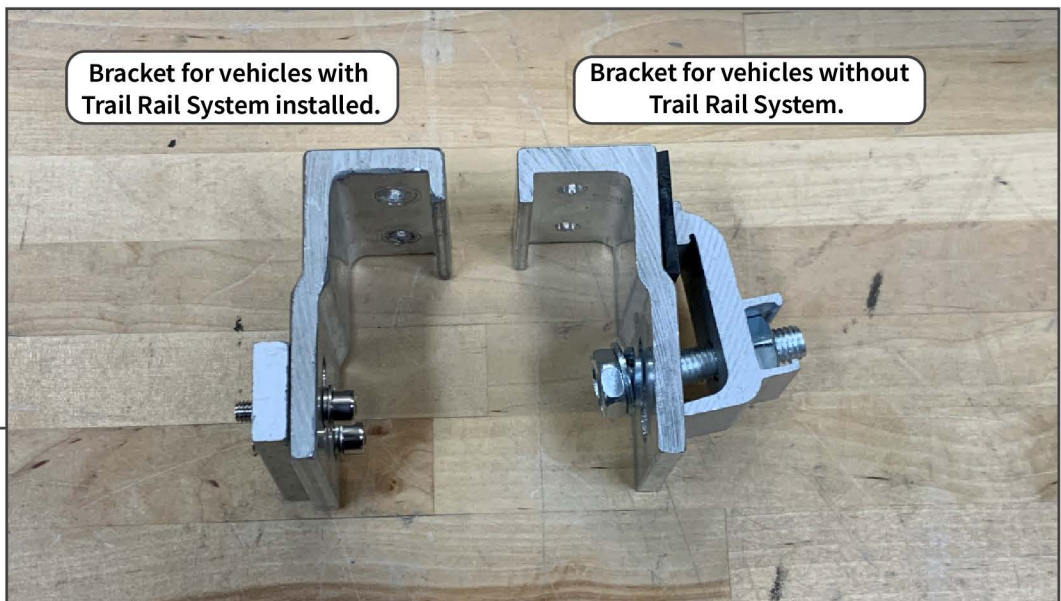


Slide (1) tonneau mounting bracket onto the front of each side rail. Do not fully tighten the Allen bolt to allow for adjustments later.



STEP 3

At the rear edge of each side rail, fit the appropriate (1) corrugated drain tube into each side rail.



STEP 4

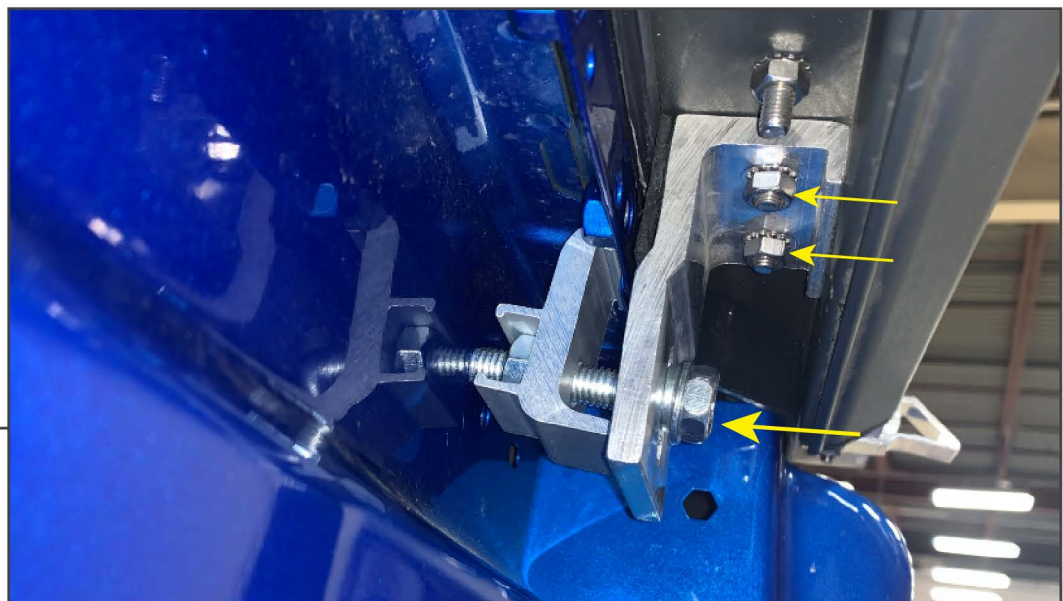
Determine the required mounting bracket for the vehicle application. The tonneau cover can be installed with OR without the OEM Trail Rail system.



STEP 5
[With Trail Rail System]

If installing the tonneau cover utilizing the Trail Rail system, remove the threaded blocks from the included mounting bracket and fit the blocks into the rail system. Then, lift each side rail to the vehicle bed rail. Align the side rail brackets to the threaded blocks in the Trail Rail, and loosely secure the side rail using (4) M6 Allen bolts per side rail.

Do not fully tighten the Allen bolts to allow for adjustments later.

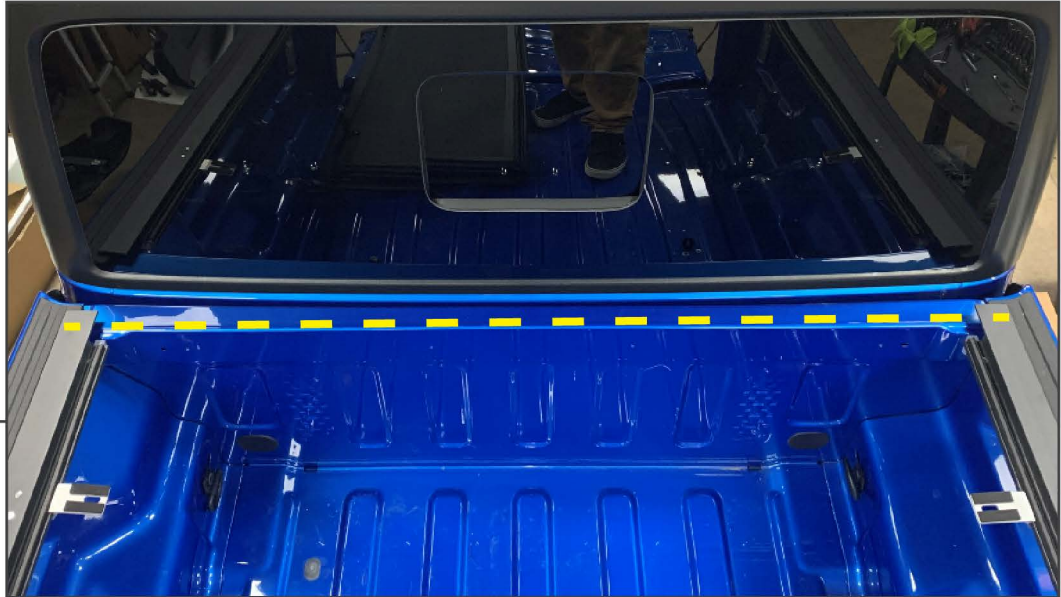


STEP 6
[Without Trail Rail System]

If installing the tonneau cover without the Trail Rail system, remove the pre-installed side rail brackets by removing (2) 10mm nuts per bracket. Then, install the included (2) clamp brackets using the original (2) 10mm nuts.

Fit each side rail to the vehicle, and fit the clamp portion under the bed rail lip. Secure, but do not fully tighten the clamps to allow for adjustments later.

STEP 7



Clean the vehicle bulkhead using isopropyl alcohol and a microfiber cloth. Install the included bulkhead seal the inner-most edge of the vehicle bed bulkhead. Firmly press the seal into place to encourage adhesion.

STEP 8



With a helper, lift the tonneau cover to the previously installed side rails. Then, un-fold the first tonneau cover panel to reveal the front stud holes. Align the tonneau cover to the bed, and fit the (2) tonneau cover studs through the top of the tonneau cover into the tonneau mounting brackets at the front of the side rail.

Secure the tonneau cover to the side rail bracket using (1) flat washer, (1) lock washer, (1) knob nut, and (1) cotter pin.



STEP 9

Fully un-fold the tonneau cover, and check the alignment to the bulkhead with the tailgate closed. Adjust the tonneau cover and side rails front/back as necessary to achieve proper fitment.

The front gasket on the tonneau cover will meet to the installed bulkhead seal, while the rubber gasket will touch the vehicle tailgate when the tailgate is closed.



STEP 10

Depending on the tonneau alignment, the tonneau cover may not initially lock into the side rail latches. In this case, loosen the (1) Phillips bolt on the latch on each side rail, and adjust the latch until the tonneau cover will lock into the latches. Tighten the (1) Phillips bolt once the adjustments are made.



STEP 11

Fold the tonneau cover towards the cab of the vehicle, and tighten all tonneau and side rail mounting hardware.

Installation is now complete.