



UTILITY RAIL SYSTEM

(2020-2024+ GLADIATOR JT)

INSTALLATION INSTRUCTIONS

CONTENTS

(2) Side Utility Rails
(1) Center Utility Rail
(14) M6x1.00 x 30mm Allen Bolts
(14) M6 Flat Washers
(2) M6x1.00 Hex Rivet Nuts

TOOLS REQUIRED

4mm Allen Key/Bit
Ratchet
Exterior Detailer
Microfiber Cloth

STEP 1



Clean the front of the vehicle bed using exterior detailer and a microfiber cloth. Locate the (4) M6x1.00 bolt holes in the bed.

If applicable, clean the threads of any bedliner material on all sides of the bed.

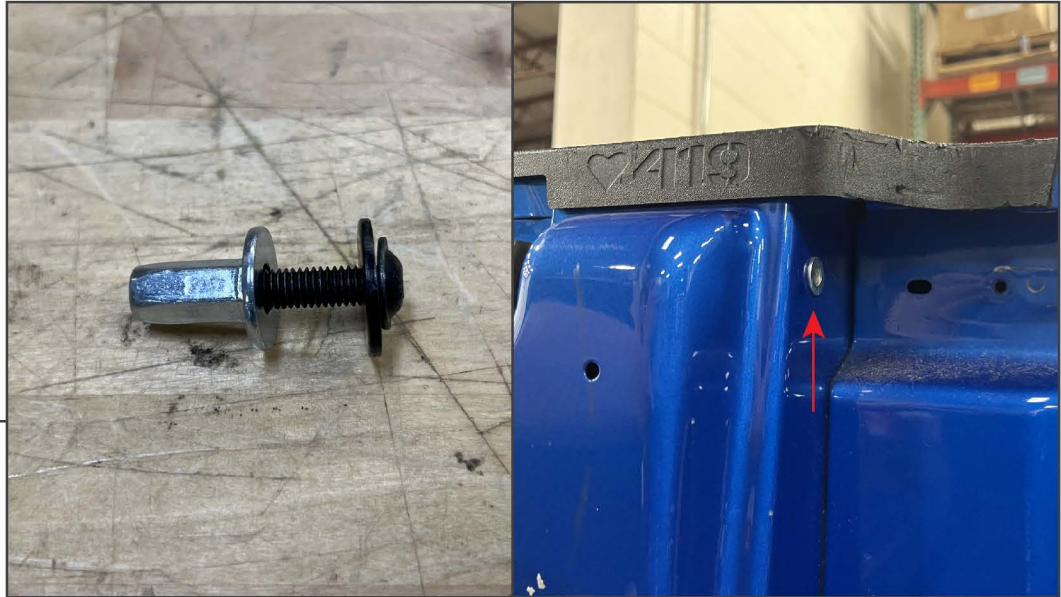
STEP 2



Fit each end of the center utility rail plastic clips into the pre-drilled holes in the bed. Then, loosely secure the utility rail using (4) M6x1.00 Allen bolts into the bed threaded holes.

Once all bolts are threaded into the vehicle, evenly tighten all hardware to secure the utility rail to the vehicle.

STEP 3



Along the rear of the bed, locate the Hex hole in the bed. Using (1) Hex rivet nut, fit the rivet nut into the Hex hole and tighten the insert using (1) M6 Allen bolt until the rivet nut is secure to the vehicle bed.

Repeat this step for the opposite side of the vehicle.

STEP 4



Fit each end of the side utility rail plastic clips into the pre-drilled holes in the bed. Then, loosely secure the utility rail using (5) M6x1.00 Allen bolts into the bed threaded holes.

Once all bolts are threaded into the vehicle, evenly tighten all hardware to secure the utility rail to the vehicle.

Repeat steps 3-4 for the remaining side rail.



STEP 5

Tie Down Adjustment: Loosen the center knob, then move the tie down along the rail. Fit the tie down into the knob to lock its position, then tighten the knob to secure.

The tie downs can be moved across all three utility rails.



STEP 6

Installation is now complete.