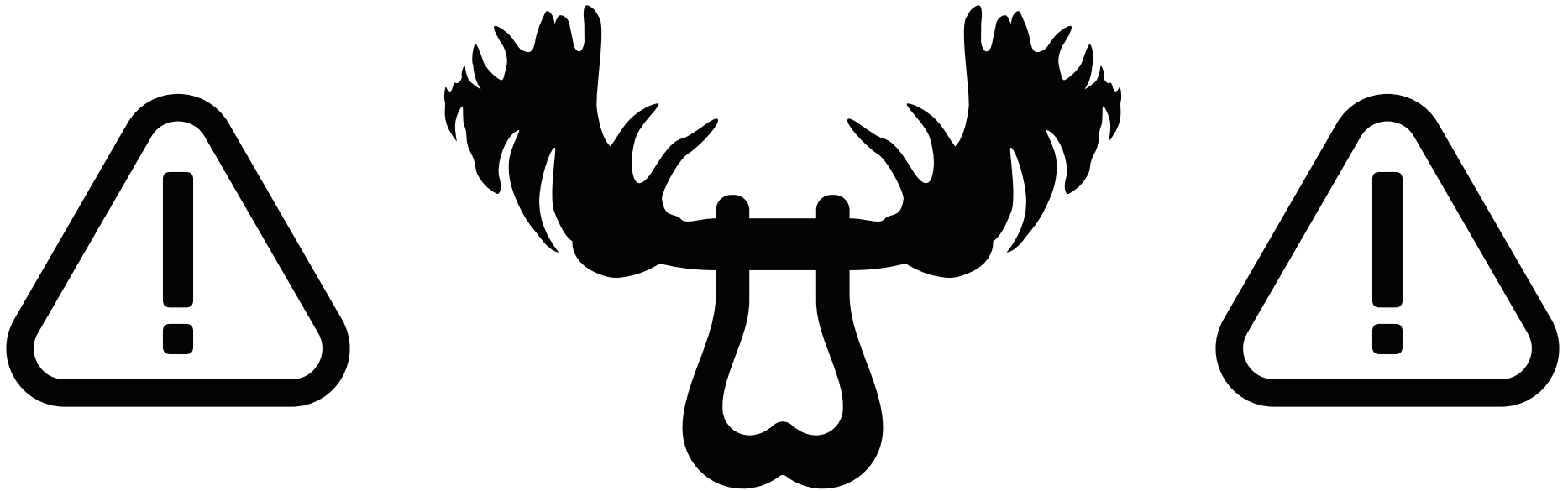




JOWL
5/8

INSTRUCTIONS

READ FIRST



CAUTION! Do not exceed work load limit (WLL) stated on product.

- MOOSE KNUCKLE JOWL 5/8 SHACKLE WLL should NOT exceed 3.5T or 3.5 tons (7,000 lbs / 3175 kgs). Exceeding work load limit may cause serious bodily harm, injury or death.
- Do not exceed pull angle more than 45 degrees.
- For use only with a shackle receiver pin hole or shackle mounting hole that measures 3/4 in (0.75") in diameter.
- For use only with a shackle receiver or shackle mount that exceeds work load limit stated on product.
- Forward Notion, LLC is not responsible for damage to vehicles, personal or surrounding property due to misuse of product including exceeding the working load limit (WLL) stated on product.

**WLL - 3.5T or 3.5 tons
(7,000 lbs / 3175 kgs)**

Factor of Safety (FoS) - 5:1

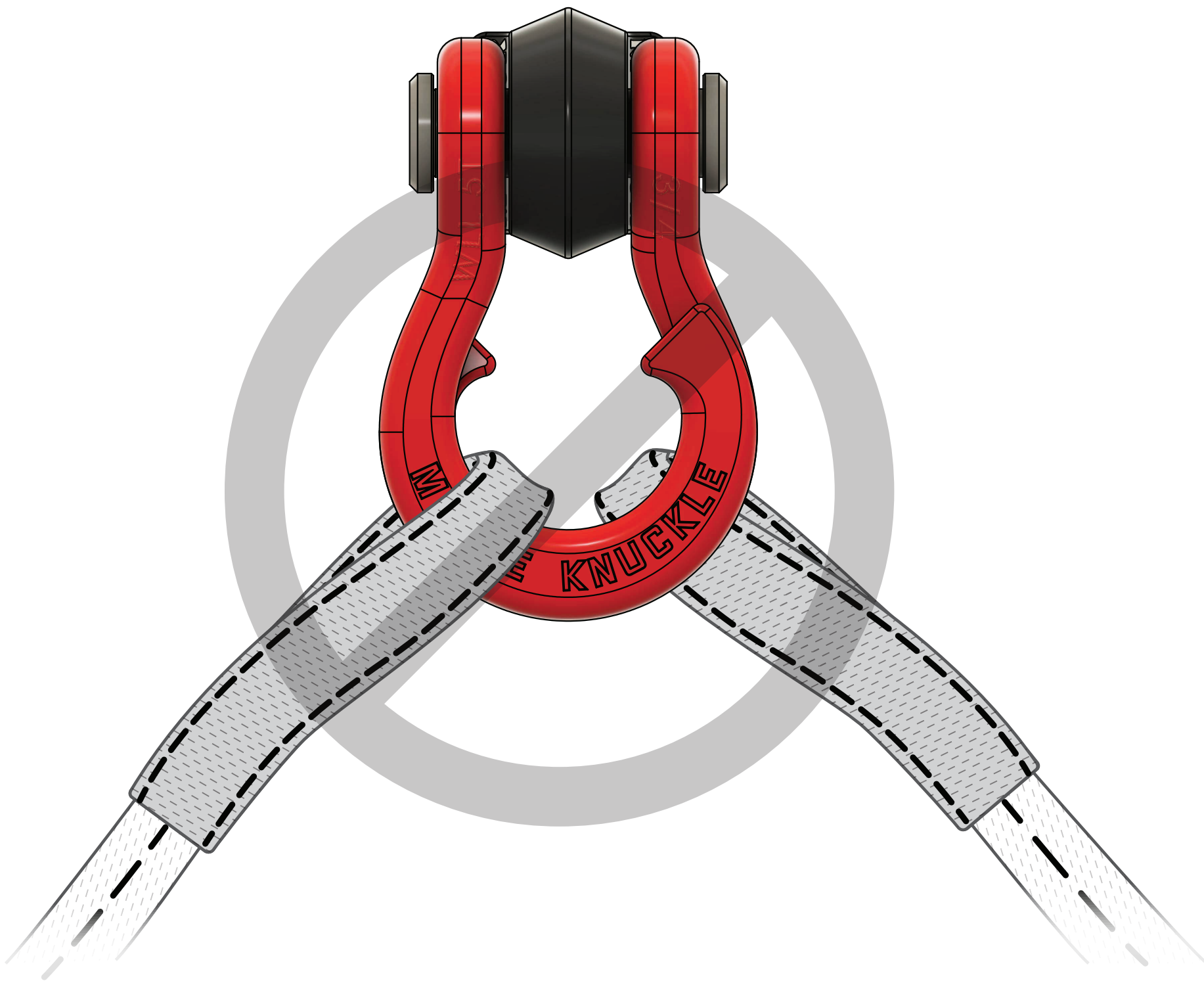
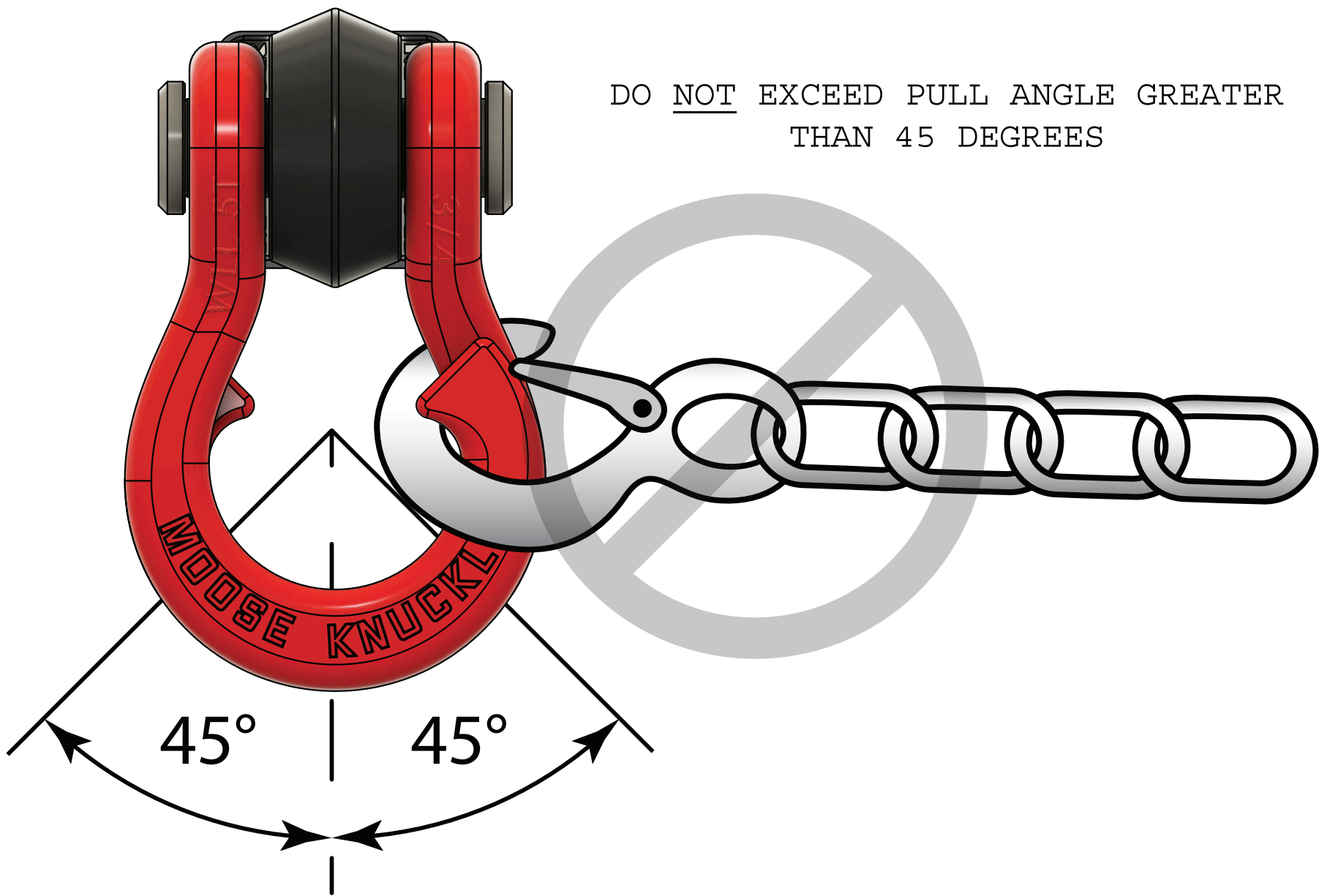


PROHIBITED USAGE



Properly engage both sides of JOWL shackle together to achieve WLL stated on product. Do not use one hook side of Jowl shackle separately from other hook side of Jowl shackle or total WLL will be decreased and damage may occur to shackle, vehicle or your property. Please refer to "Connection Instructions" section for proper tow strap application.

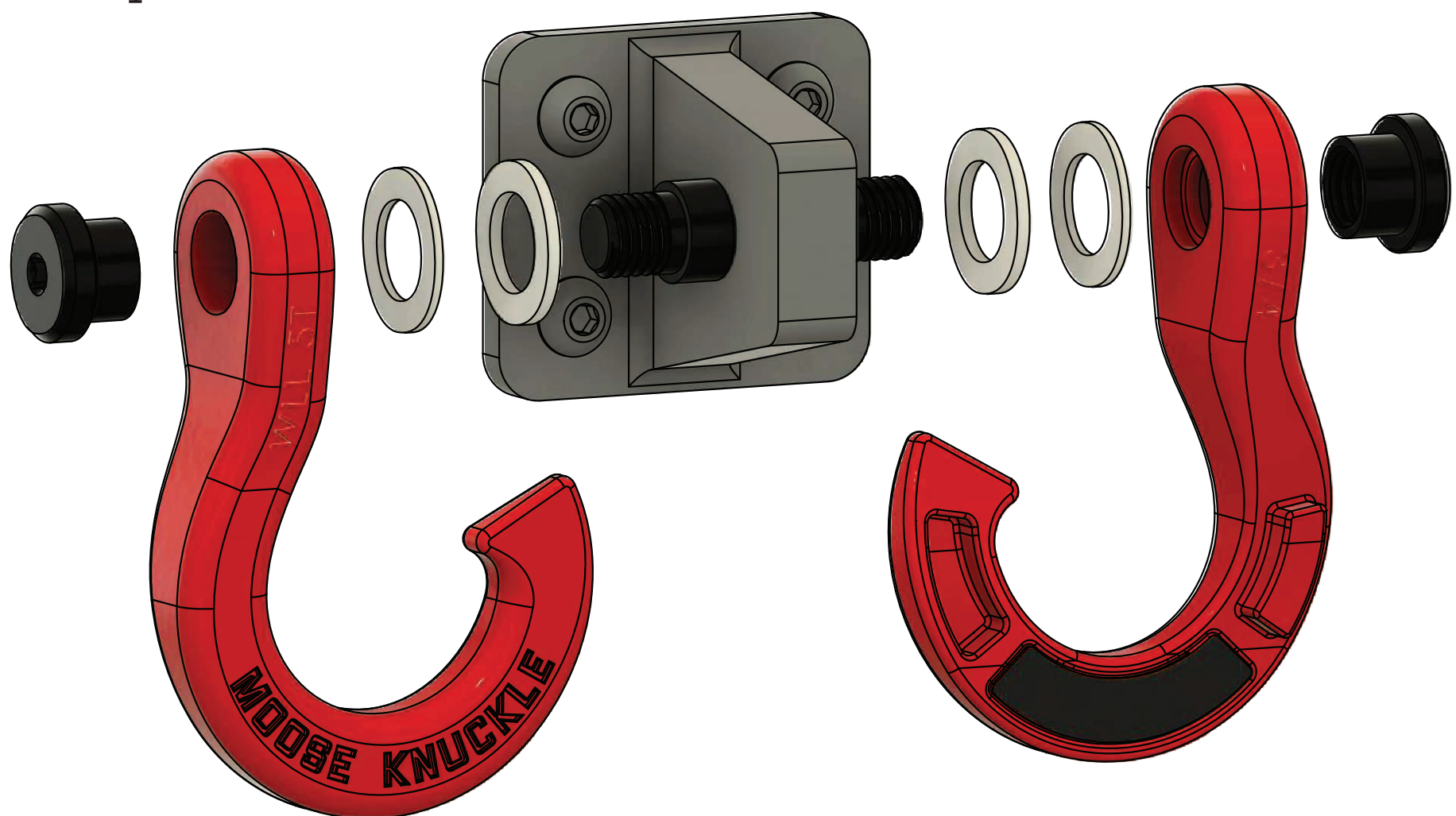
PROHIBITED USAGE (CONT'D)



DO NOT USE HOOKED SIDES SEPARATELY!!!

ASSEMBLY [CORRECT]

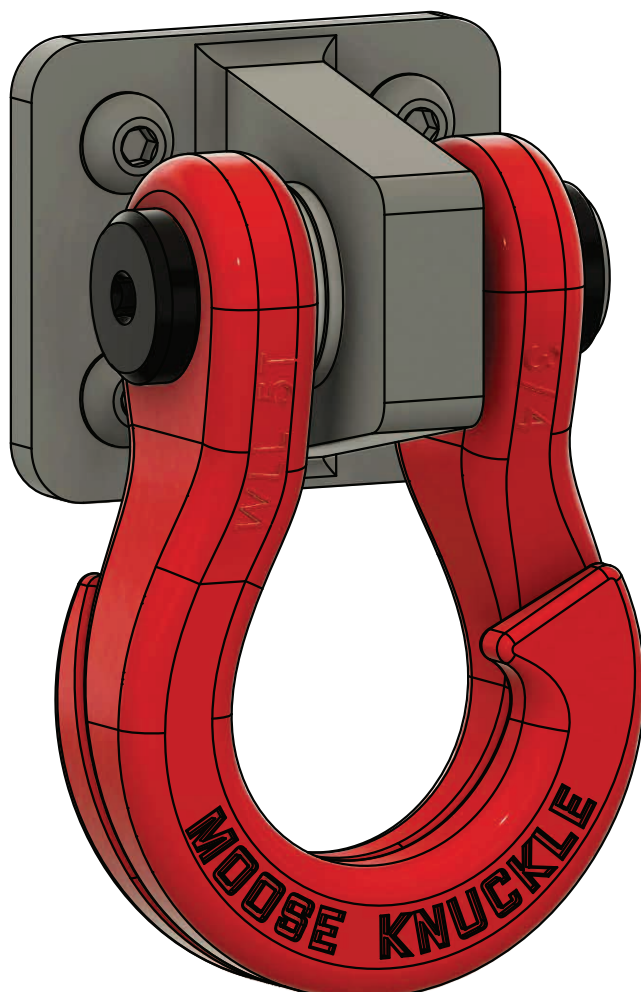
The Rattle Rings nylon washers included with your split shackle are only needed if you have gaps to fill. Some, not all, may be needed depending on your gap size. The washers should only be used between the shackle hooks and your mounting bracket. These washers should not be used on the outside of the shackle hooks between the cap screws. Please follow the correct assembly below.



This correct assembly allows the cap screws to tighten and reach the tapered threads that lock them in place.

IMPORTANT:

AVOID USING
WASHERS IN THE
CENTER WHEN THE
GAPS BETWEEN
THE HOOKS AND
MOUNT ON EACH
SIDE ARE 1.0MM
OR LESS.



CORRECT ASSEMBLY

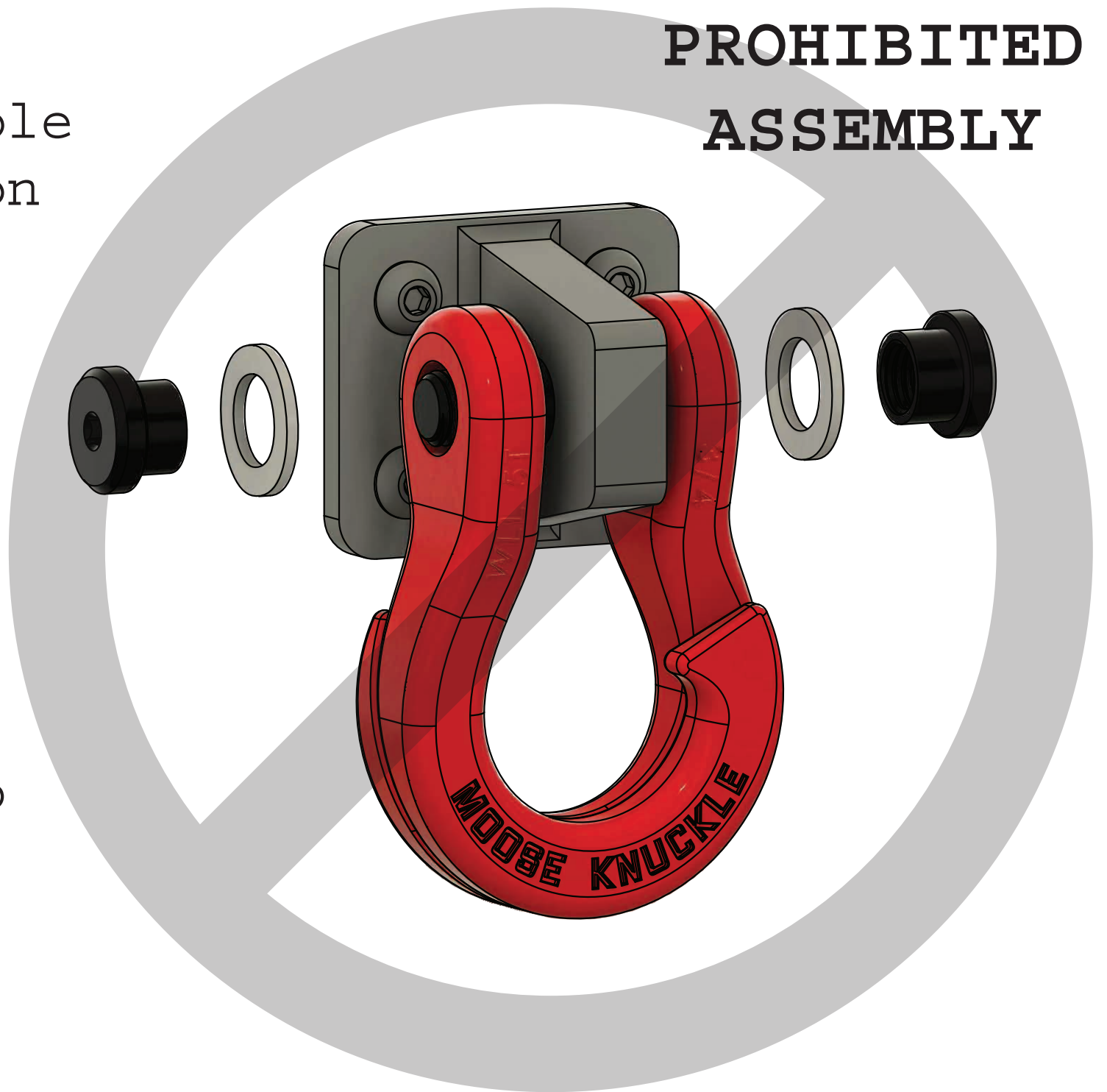
TIGHTEN BOTH
CAP SCREWS TO
30 FT LBS TORQUE

PROHIBITED ASSEMBLY

IMPORTANT:

Do not assemble with the nylon washers on the outside of shackle hooks between cap screws and hooks. This will not allow the cap screws to tighten properly.

PROHIBITED ASSEMBLY



Assembling your shackle with washers on the outside is considered improper usage. This will cause the cap screws and shackle pin to loosen during use and will void your warranty.

PROHIBITED ASSEMBLY



RECOMMENDED STEPS FOR PROPER INSTALLATION

STEP 1:

Install the shackle on your tow point, bumper mount or shackle receiver **first** with **no** nylon washers. Only tighten both cap screws to hand tight with two 1/4 inch ratchets or the provided hex bit adapters. Do **not** torque to spec.

STEP 2:

Inspect the spaces or gaps on both sides of the shackle between the hooks and the mount to determine if nylon washers are needed. If the gaps on both sides are 1.0mm or less **no** nylon washers are needed for your shackle installation.

STEP 3:

If gaps greater than 1.0mm are present, hold or slide the nylon washers into the gaps near the pin to determine which size washers will fit best for your installation. Only fill the gaps on both sides of the mount with the appropriate size washer. Do **not** use more washers than needed. Do **not** use washers that are thicker than the gaps or this will not allow the cap screws to thread down completely and the cap screw will not tighten down fully preventing the hook from being pushed against the shoulder of the pin.

RECOMMENDED STEPS FOR PROPER INSTALLATION (CONT'D)

STEP 4:

If it is determined that no nylon washers are needed, tighten cap screws to **30 FT POUNDS** of torque to fully tighten the shackle on the mount. If nylon washers are needed remove the shackle completely from the mount and proceed to the next step.

STEP 5:

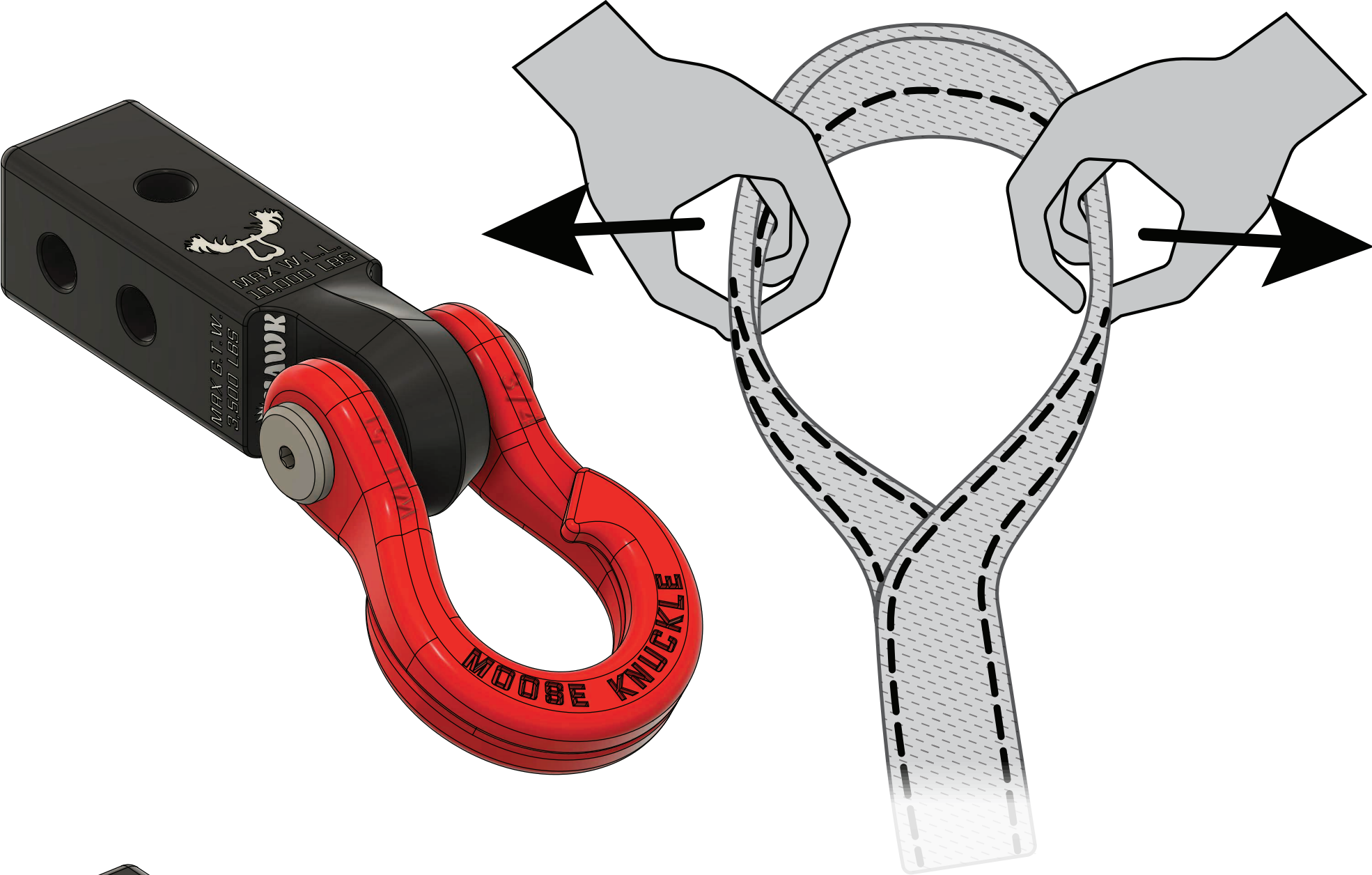
Install the shackle again on your mount this time with the washer size(s) determined in the previous step. Use one washer of equal size on each side of the mount for a balanced installation. It is acceptable to combine washer sizes if your gap widths land in between sizes. For example, one 2.0mm washer on one side and one 1.0mm washer on the other side can be used to fill the gaps perfectly so the shackle does not slide right or left along the pin on the shackle mount.

STEP 6:

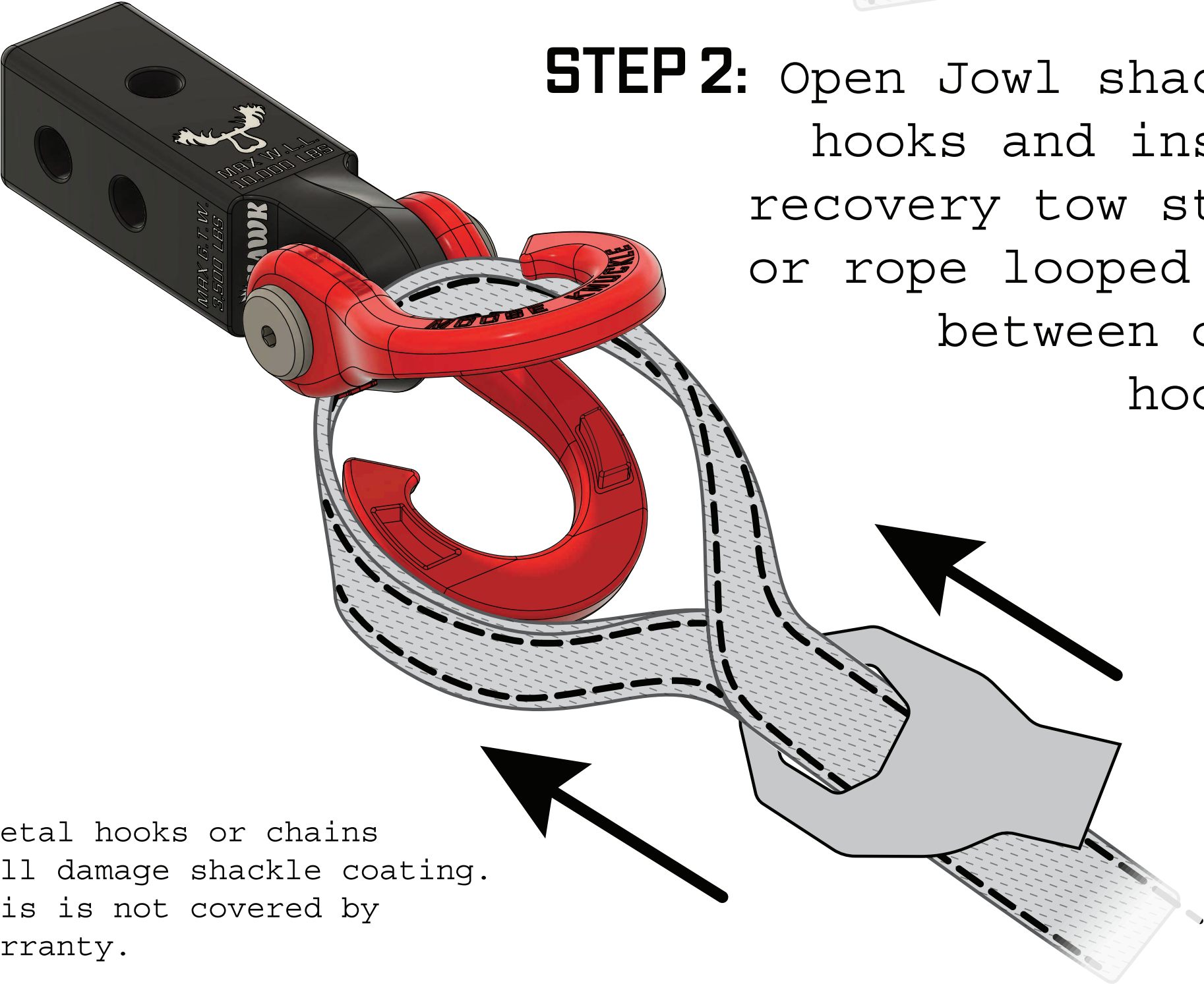
Complete your installation by tightening both cap screws to **30 FT POUNDS** of torque using one 1/4 inch ratchet and on 1/4 inch torque wrench. If a torque wrench is not available use two 1/4 inch ratchets or the supplied hex bit adapters to tighten both cap screws as tight as you can by hand.

CONNECTION INSTRUCTIONS

STEP 1: Spread open looped end of recovery tow strap or rope.

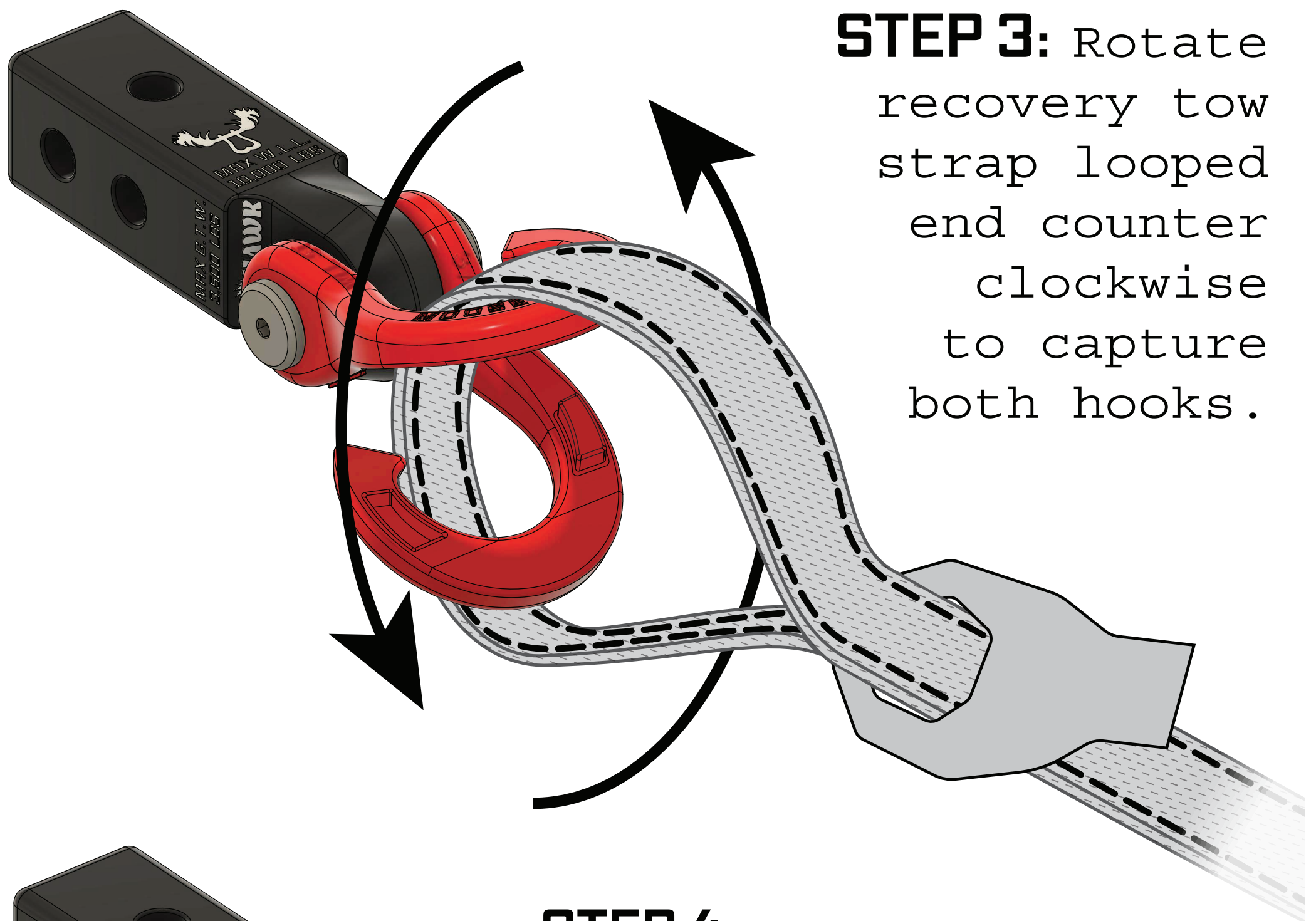


STEP 2: Open Jowl shackle hooks and insert recovery tow strap or rope looped end between open hooks.

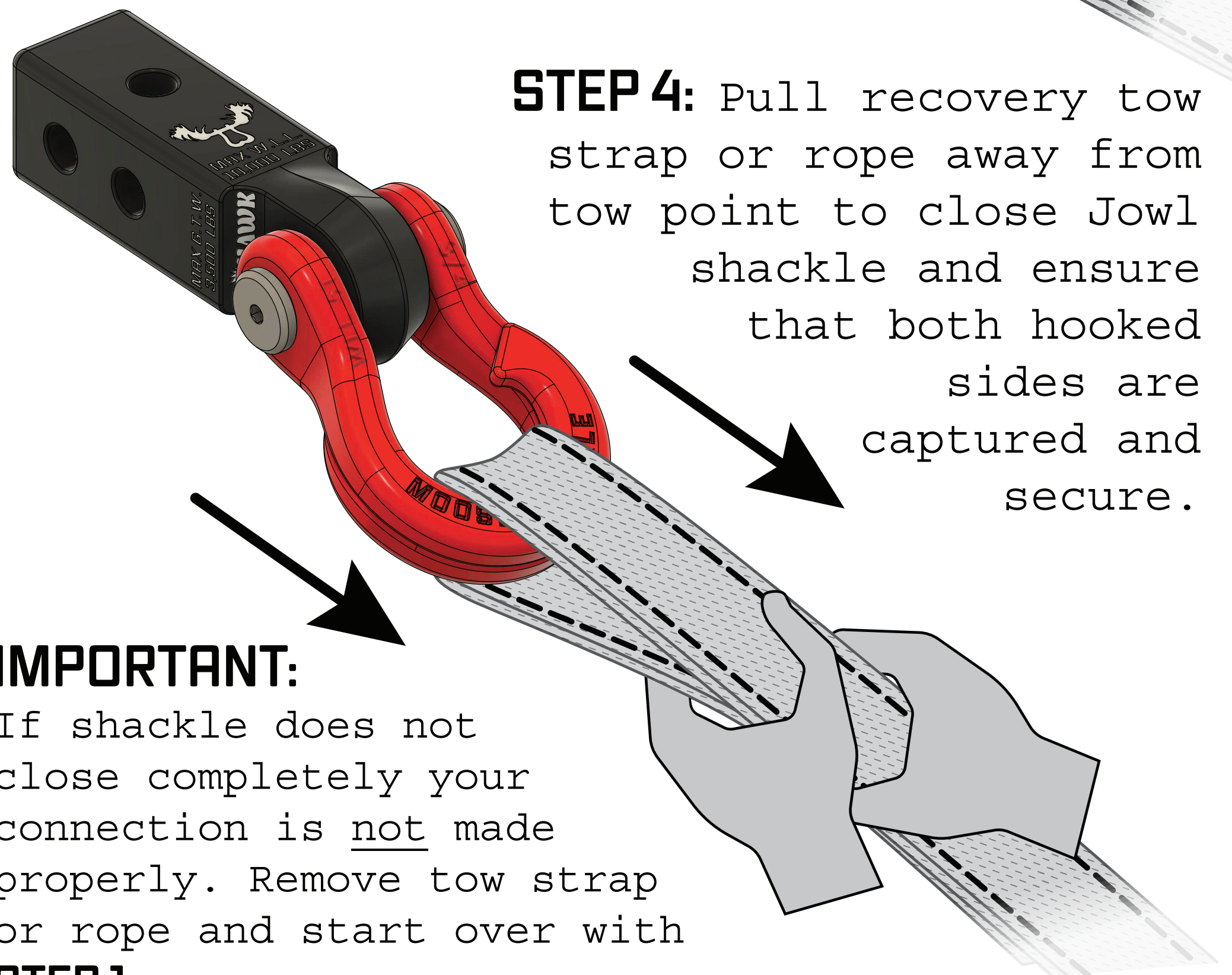


*Metal hooks or chains will damage shackle coating. This is not covered by warranty.

INSTRUCTIONS (CONT'D)



STEP 3: Rotate recovery tow strap looped end counter clockwise to capture both hooks.



STEP 4: Pull recovery tow strap or rope away from tow point to close Jowl shackle and ensure that both hooked sides are captured and secure.

IMPORTANT:

If shackle does not close completely your connection is not made properly. Remove tow strap or rope and start over with **STEP 1.**

LIMITED WARRANTY

1. Forward Notion, LLC makes every effort to assure that its products meet high quality and durability standards and warrants to the original retail consumer of our products (you) that each such product be free from defects in material and workmanship as follows:

ONE(1)YEAR limited warranty on shackles.

This warranty does not apply to defects due, directly or indirectly, to misuse, abuse, negligence or accidents. We limit all implied warranties to the period specified above from the date our product was purchased at retail. We shall in no event be liable for death, injuries to persons or property or for incidental, contingent, special or consequential damages arising from the use of our products. Some states do not allow the exclusion or limitation of incidental or consequential damages, so the above limitation or exclusion may not apply to you.

To take advantage of this warranty, the product must be returned for examination, postage prepaid, to Forward Notion, LLC. Proof of purchase and an explanation of the complaint must accompany the merchandise. If our inspection discloses a defect, we will replace the product, at our election or may elect to refund the purchase price if we cannot readily and quickly provide you with a replacement, if you are willing to accept such refund. We will return the replacement product at our expense, but if we determine there is no defect, or that the defect resulted from causes not within the scope of our warranty, then you must bear the cost of storing and returning this product. This warranty gives you legal rights, and you may also have other rights which vary from state to state. For warranty service, contact Forward Notion, LLC 1260 Fran Mar Ct., Clermont, FL 34711 - Phone (417)986-6673