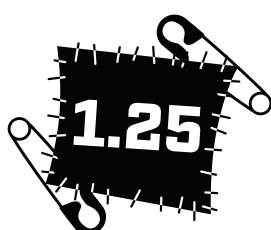
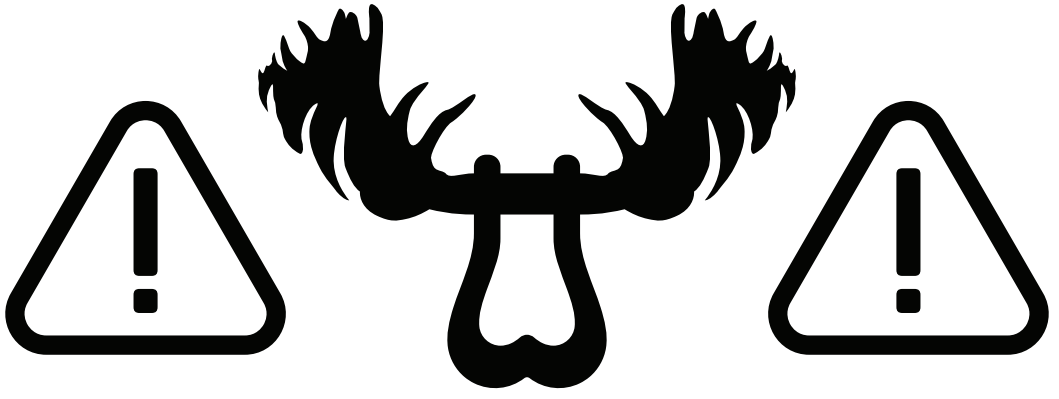


**M**  **HAWK**



**INSTRUCTIONS**

# READ FIRST



## CAUTION!

Do not exceed work load limit (WLL) stated on product.

- MOWAWK 1.25 receiver WLL should NOT exceed 3.5T or 3.5 tons(7,000 lbs / 3175 kgs). Exceeding work load limit may cause serious bodily harm, injury or death.
- Do not exceed WLL of any component in assembly. This includes, but is not limited to, hitch balls, receiver pins and receiver locks.
- Do not exceed pull angles more than 45 degrees while in both the vertical and horizontal shackle receiver position.
- For use only with a shackle receiver pin size and hitch ball shank that measures up to 7/8 inch (0.875") in diameter.
- For use only with hitch receiver mounting bracket or receiver mount that exceeds work load limit stated on product.

**MOHAWK 1.25 WLL** - 3.5T or 3.5 tons (7,000 lbs / 3175 kgs).

**MOHAWK 1.25 GTW** - gross trailer weight up to 3500 lbs.

**MOHAWK 1.25 TW** - maximum tongue weight up to 300 lbs.

- Forward Notion, LLC is not responsible for damage to vehicles, personal or surrounding property due to misuse of product including exceeding work load limit (WLL) stated on product.

- Forward Notion, LLC is NOT responsible for display on any motor vehicle. Display or use at your own risk.

# PROHIBITED USAGE



## DO NOT EXCEED PULL ANGLE GREATER THAN 45 DEGREES

Exceeding pull angles greatly decreases the strength, working load limit and breaking strength of the receiver. This applies to when the receiver is in both the vertical and horizontal towing/pulling positions. When in the horizontal position pull angles are orientated up and down instead of right and left. Exceeding these pull angles in both towing/pulling positions may cause damage to the receiver and/or your vehicle, personal and surrounding property. Exceeding pull angles may also cause serious bodily harm, injury or death. Please refer to "Acceptable Usages" section for proper usage.

# FoS

## [ FACTOR of SAFETY ]

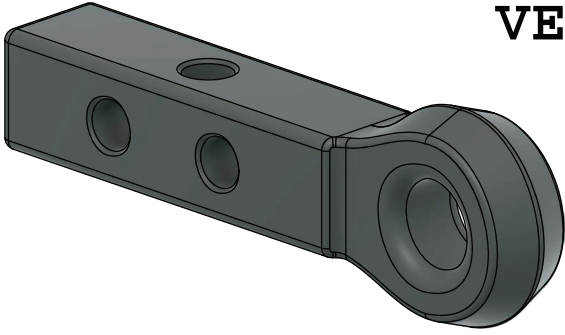


**DO NOT EXCEED WLL**  
**(Working Load Limit)**  
**7,000 lbs**

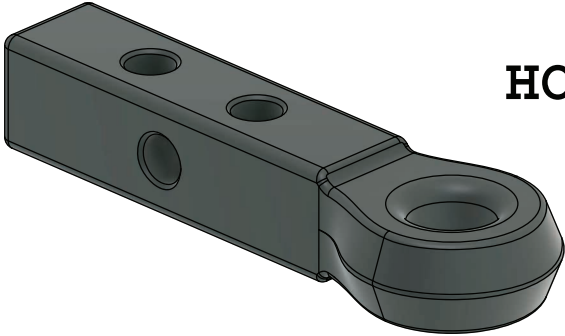
Factor of Safety defines how safe a product or component is from the required specification. It is the ratio of the actual capacity and the design or working load limit (WLL). Never exceed the working load limit under any circumstance. Doing so may cause damage to your property or the property around you. More importantly, exceeding the working load limit (WLL) may cause severe injury or death.

A FoS of **5** means that a component will fail exactly when it reaches five times the design load and expresses a margin of safety for unforeseen circumstances and human error.

# ACCEPTABLE USES



VERTICAL PULL  
POSITION

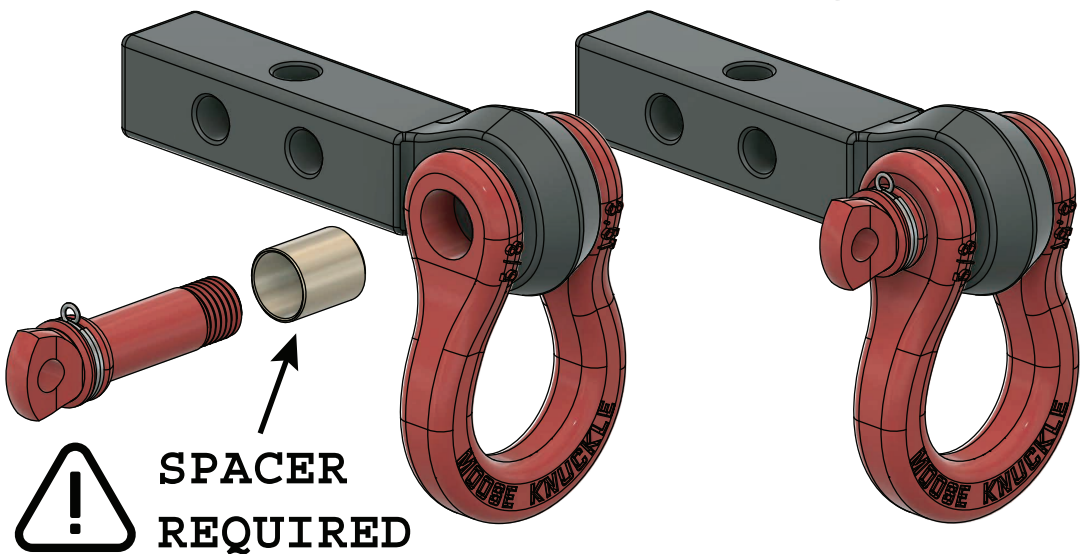


HORIZONTAL PULL  
POSITION

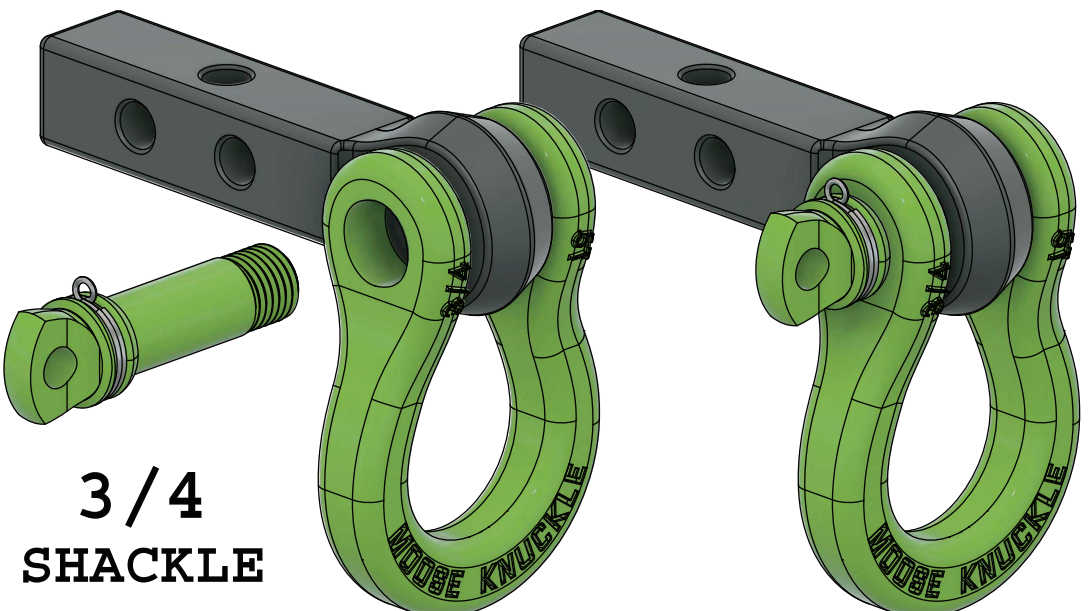


SOFT SHACKLE  
CONNECTION

**5 / 8**  
SHACKLE

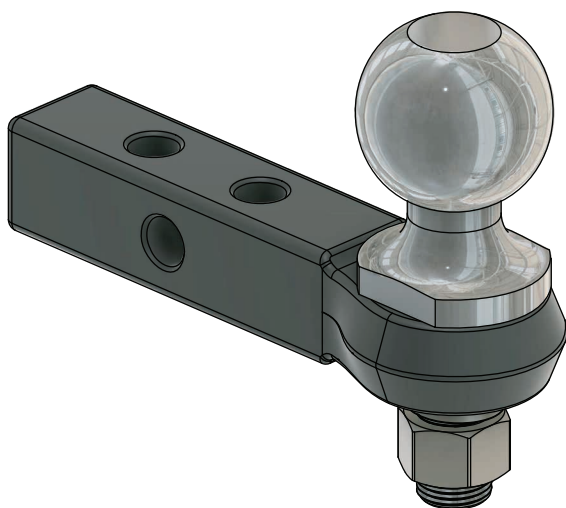


SPACER  
REQUIRED



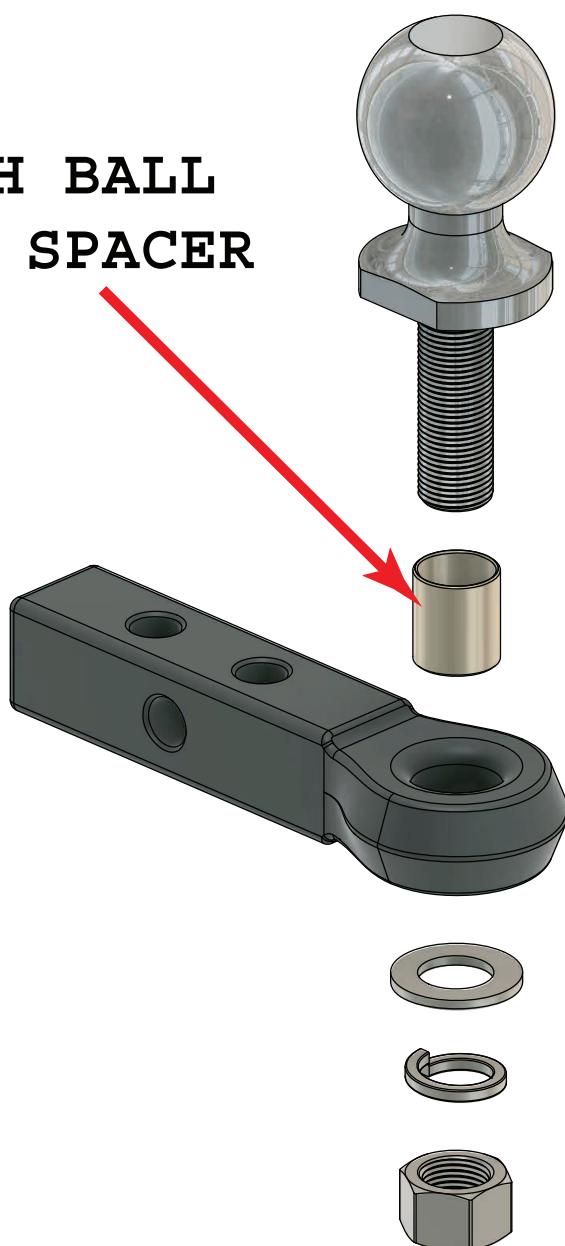
**3 / 4**  
SHACKLE

# HITCH BALL ASSEMBLY



The Mohawk Receiver can be used as a **Class I / II** Hitch Ball Mount and will accept a **Class I / II** Hitch Ball with a 3/4" diameter shank. The provided spacer/bushing must be used when assembling or mounting a hitch ball onto the Mohawk Receiver. Not using the provided spacer is considered improper use and may cause damage to the receiver and/or your vehicle, personal and surrounding property. Not using the provided spacer may also cause serious bodily harm, injury or death to yourself and others. **NEVER** attach a tow strap, recovery rope or attempt to recovery a vehicle using a hitch ball.

## HITCH BALL SHANK SPACER



# LIMITED WARRANTY

1. Forward Notion, LLC makes every effort to assure that its products meet high quality and durability standards and warrants to the original retail consumer of our products (you) that each such product be free from defects in material and workmanship as follows:

ONE(1)YEAR limited warranty on shackles.

This warranty does not apply to defects due, directly or indirectly, to misuse, abuse, negligence or accidents. We limit all implied warranties to the period specified above from the date our product was purchased at retail. We shall in no event be liable for death, injuries to persons or property or for incidental, contingent, special or consequential damages arising from the use of our products. Some states do not allow the exclusion or limitation of incidental or consequential damages, so the above limitation or exclusion may not apply to you.

To take advantage of this warranty, the product must be returned for examination, postage prepaid, to Forward Notion, LLC. Proof of purchase and an explanation of the complaint must accompany the merchandise. If our inspection discloses a defect, we will replace the product, at our election or may elect to refund the purchase price if we cannot readily and quickly provide you with a replacement, if you are willing to accept such refund. We will return the replacement product at our expense, but if we determine there is no defect, or that the defect resulted from causes not within the scope of our warranty, then you must bear the cost of storing and returning this product. This warranty gives you legal rights, and you may also have other rights which vary from state to state. For warranty service, contact Forward Notion, LLC 1260 Fran Mar Ct., Clermont, FL 34711 - Phone (417)98MOOSE - (417)986-6673