



HD REAR BUMPER

(2020+ GLADIATOR)

INSTALLATION INSTRUCTIONS

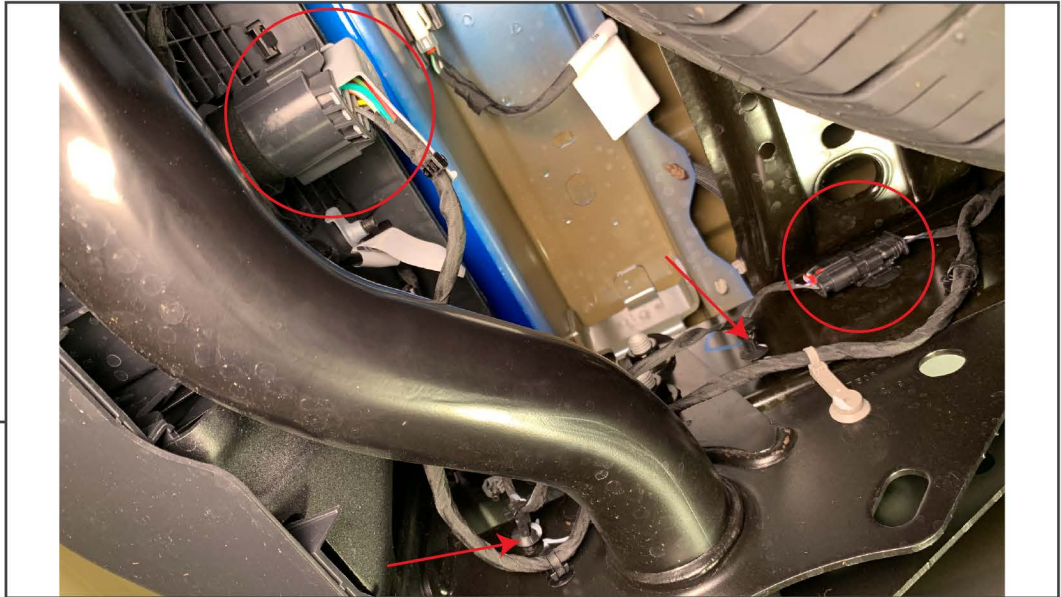
CONTENTS

- (1) Bumper
- (2) Bumper Brackets
- (2) D-Rings
- (2) Bolt Plates
- (2) Nut Plates
- (6) M12x1.75 40mm Hex Bolts
- (10) Lock Washers
- (14) Flat Washers
- (8) M12x1.75 Nuts
- (8) M4x0.7 Allen Bolts
- (4) Back Up Sensor Plugs w/ Foam
- (4) Clear Bolt Plate Retainers
- (2) License Plate Retainers

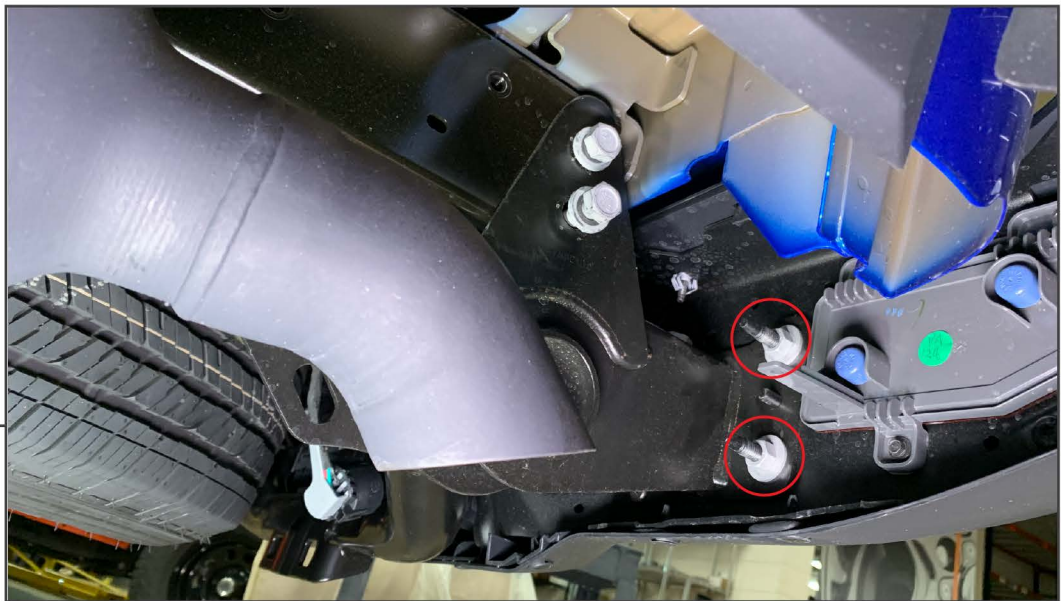
TOOLS REQUIRED

- 16, 18, 21mm Socket
- Socket Wrench
- Plate Blade Screw Driver

SKU # JG3198

STEP 1

Begin by disconnecting the trailer plug wiring harness. Then disconnect the license plate wiring. Free the wiring from any wiring clips securing the wiring to the bumper or bumper brace.

STEP 2

Using a 16mm socket, remove the (2) bolts on each side of the bumper. Repeat the process on both sides of the bumper.

**STEP 3**

Remove the license plate to access the remaining (2) 16mm bolts securing the bumper to the vehicle. Carefully remove the bumper and rest it on a soft surface.

**STEP 4**

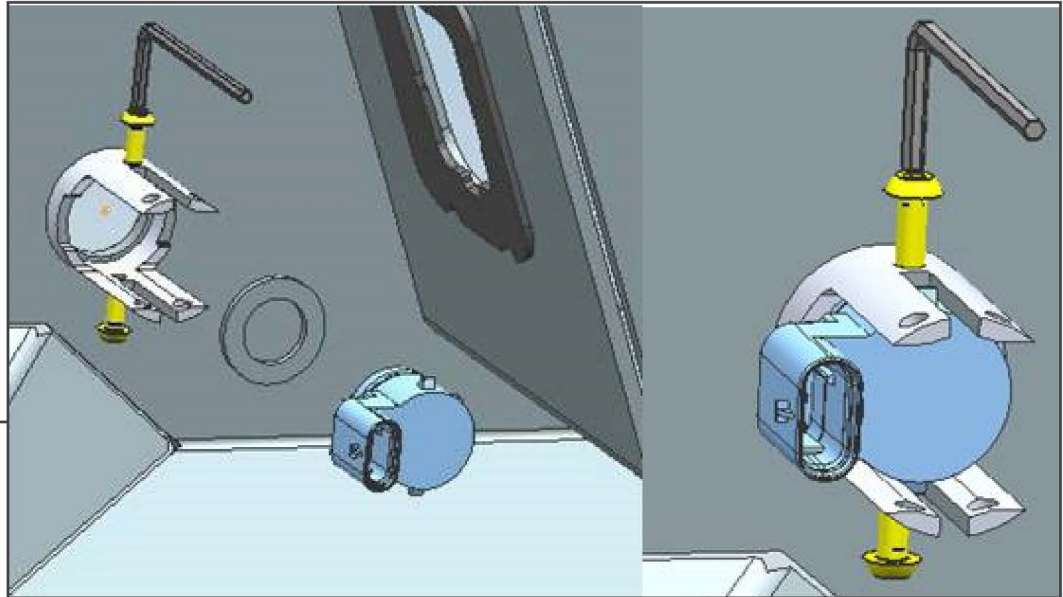
Remove the factory license plate lights from the bumper. Gently pry up on the retaining clips and then pull the housing away from the bumper. The front half of the housing (on the outside of the bumper) will pull away from the back half of the housing.

STEP 5

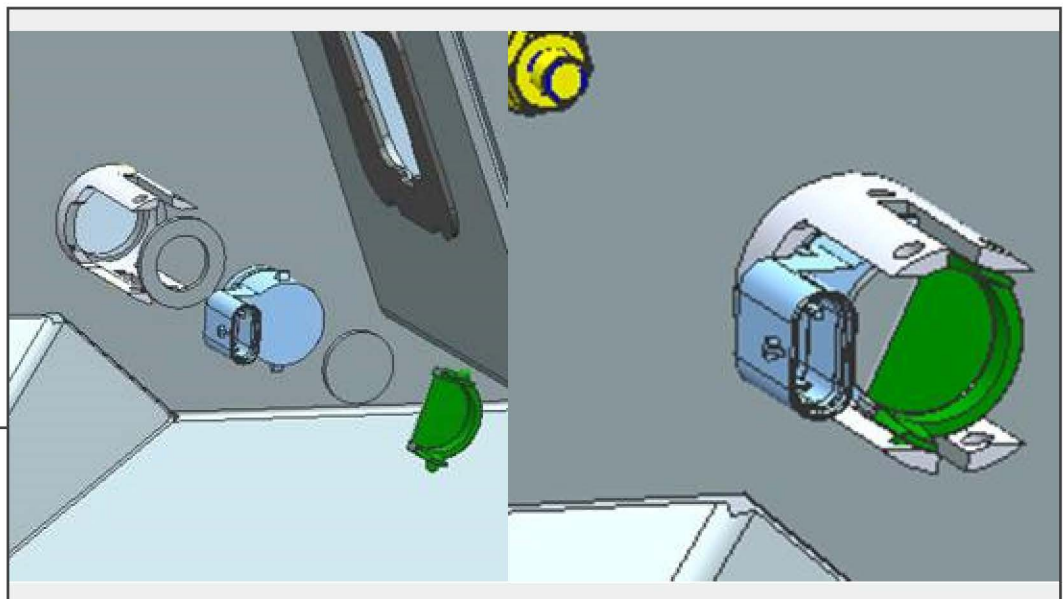
With the license plate housing separated, depress the tab on the light and remove it from the housing. Transfer the light to the new bumper. Transfer the wiring harness from the stock bumper to the new bumper.

STEP 6

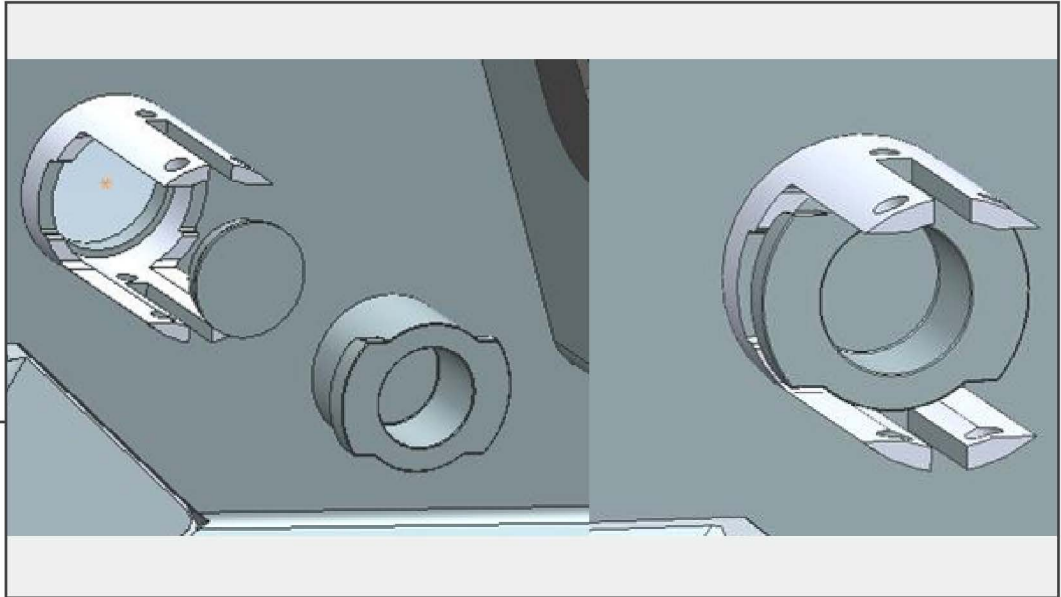
Optional: If equipped with back up sensors, remove the sensors from the bumper. Then remove the rubber gasket from the sensor. Prepare the sensor for re-installation by applying the supplied foam ring to the sensor. Then reference the Step 7 or 8 for the mounting options.

STEP 7

Optional Sensor Mounting: Using the provided M4 Allen screws lightly tighten the screws into the sensor to hold it in place. **Note: Over tightening the screws can damage the sensor.

STEP 8

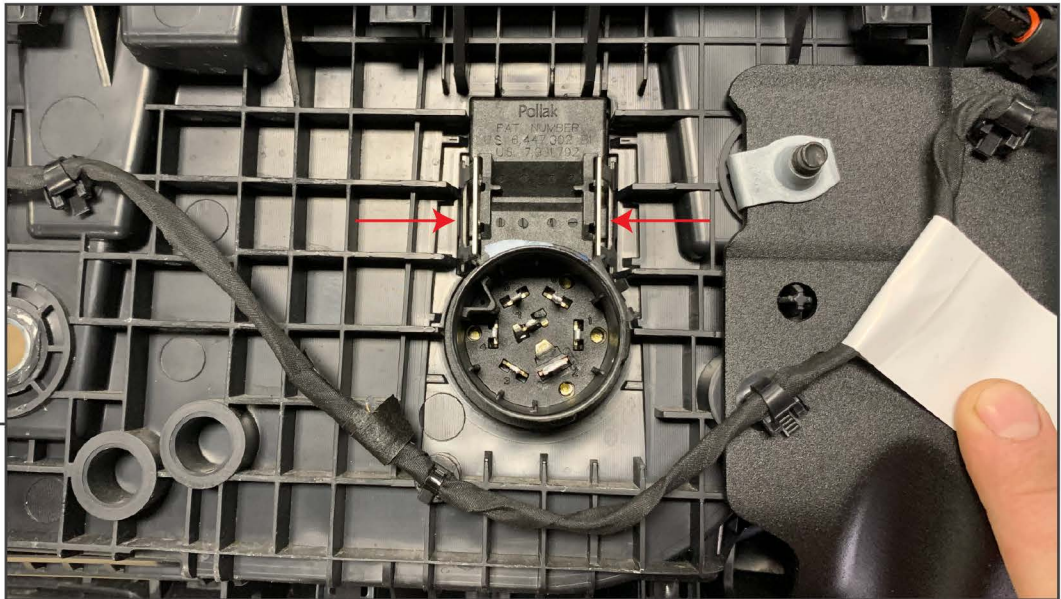
Optional Sensor Mounting: Place the round foam on the back of the sensor. Press the sensor into the bumper. Then clip the retaining plate onto the bumper to hold the sensor in place.

STEP 9

No Sensor: Mount the hard rubber plug to the front of the soft rubber plug. Press the assembly into the bumper so that the hard rubber plug is flush with the face of the bumper.

STEP 10

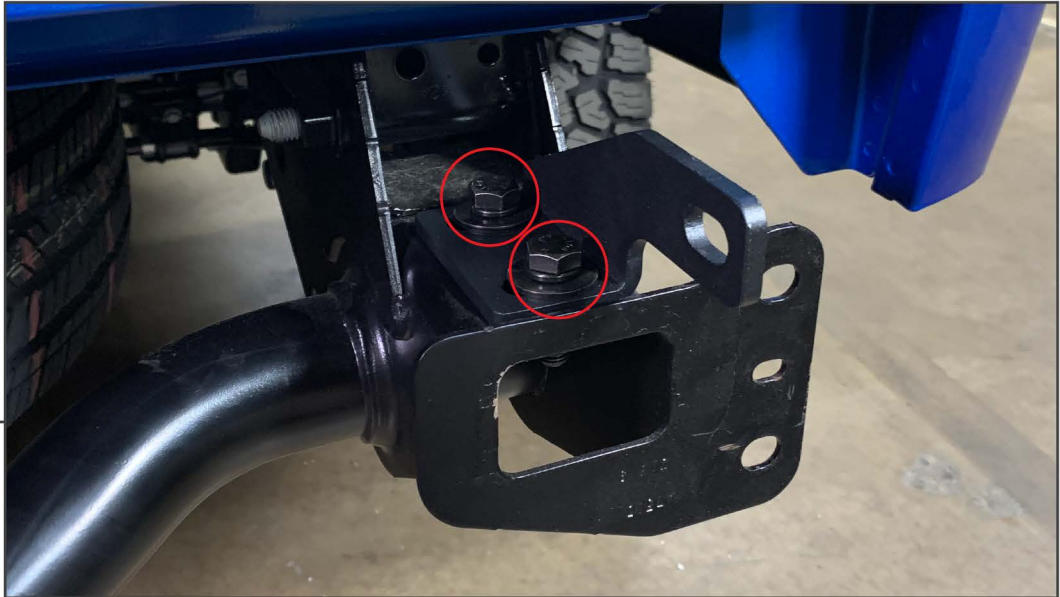
Place the nut plate through the bumper. Use the clear plastic retainers to hold the plates in place during installation.

STEP 11

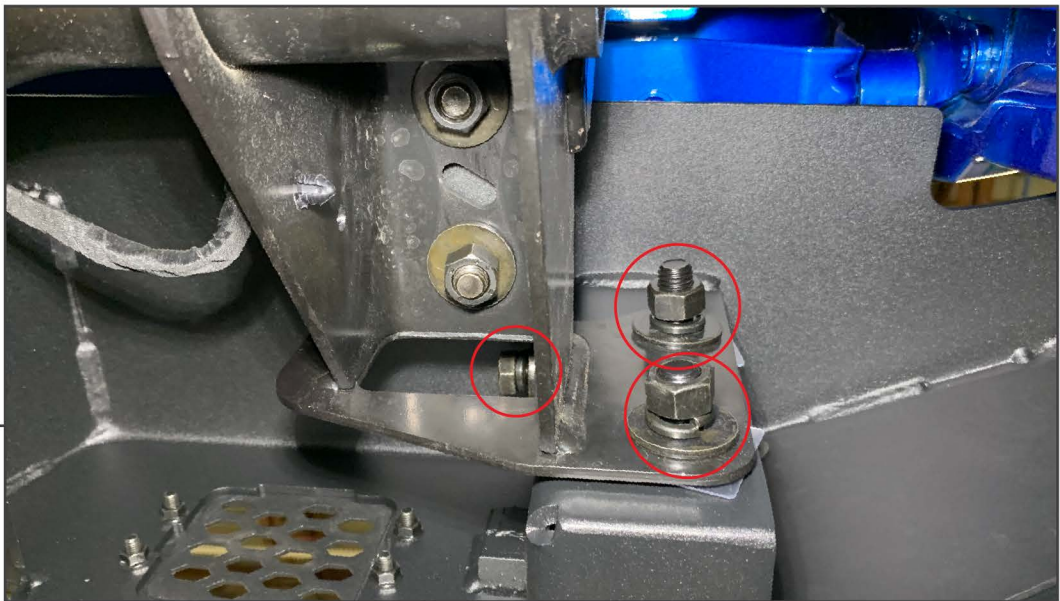
Depress the clips securing the trailer wiring plug and press the connector through the bumper. Transfer the plug on to the new bumper.

STEP 12

Remove the 18mm bolts securing the factory tow hook to the frame rail and remove the hook from the vehicle.

**STEP 13**

Loosely mount the additional bumper brackets to top of the frame rail using (2) M12 bolts, (4) M12 washers, (2) M12 lock washers, and (2) nuts per bracket.

**STEP 14**

Install the bumper to the vehicle. Bolt the nut plate to the frame rail using (2) M12 flat washers, (2) lock washers, (2) nuts per side. Attach the additional bumper brackets to the bumper using (1) M12 bolt, (2) M12 washers, (1) M12 lock washers, and (1) M12 nut plate. Tighten any and all hardware.



STEP 15

Remove the bumper wiring harness and plug it in to the license plate lights and trailer wiring plug. Press in the plastic license plate screw retainers and install the license plate to complete the installation.