

## INSTALLATION INSTRUCTIONS

Thank you for purchasing genuine Design Engineering, Inc. products. Be sure to always wear the proper safety equipment when installing any DEI product. Design Engineering Inc. WILL NOT BE HELD LIABLE FOR IMPROPER INSTALLATION OR USE OF THIS PRODUCT. Please follow all instructions provided. If you are unsure of any installation procedure, please contact a certified technician.

**DESCRIPTION:** 11003  
Universal Catalytic Converter Shield

**KIT CONTENTS:**

- 4 stainless Steel standoffs
- 2 Worm Gear clamps
- 4 – 1/4-20 Bolts
- 4 – 1/4-20 Nuts
- 1 heat shield
- Instructions

**TOOLS NEEDED:**

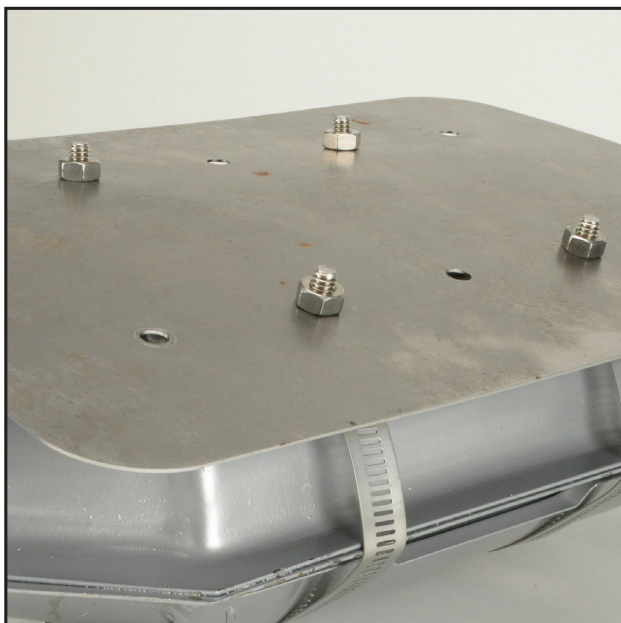
- 7/16 wrench
- Flat blade screw driver
- Side cutters or shears

**SAFETY:**

- Safety glasses
- Gloves

**NOTE OF CAUTION:** Wear eye and hand protection when installing all materials.

**OVERVIEW:** This is a universal fit heat shield designed to replace your missing or damaged factory shield.



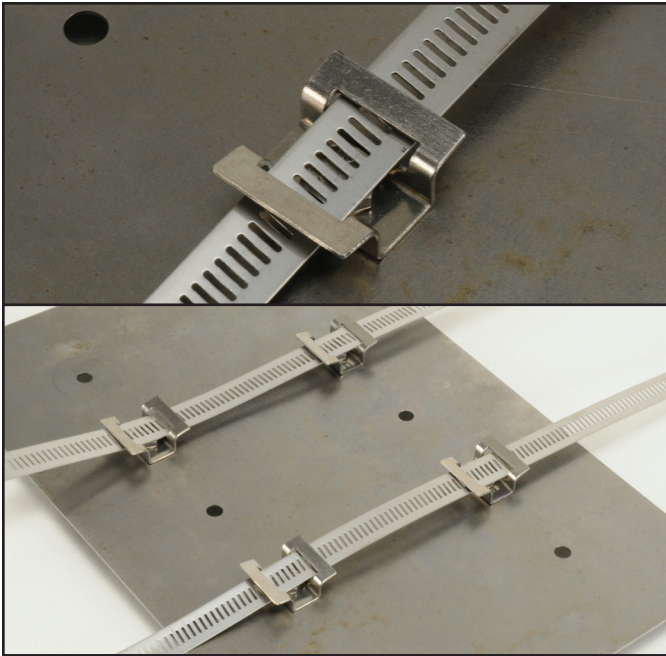
**Fig 1**

**STEP 1.** Remove any portion of your damaged factory shield. The shield may be installed on top or bottom of your converter.

**STEP 2.** Pre-fit your new DEI heat shield into the position that it will be in. Mark the holes that you will use to bolt the stainless standoffs in.

**STEP 3.** You may need to bend the heat shield to match the contour of your converter.

**STEP 4.** Install the standoffs using the bolts and nuts provided. The bolt will come up through the bottom of the standoff and the nut will be on top of the shield. Snug the bolts but do not tighten at this time. **FIG 1**



**Fig 2**

STEP 5. Check the fit once more with the standoff's installed and adjust as needed

STEP 6. Once satisfied with the fit you can tighten the bolts.

STEP 7. With the shield off slide each worm gear clamp end through the slots in the standoffs. **FIG 2**



**Fig 3**

STEP 8. With the clamps going through the standoff's, put the shield in place on the converter and feed the clamp ends into the worm gear and snug the clamp. **FIG 3**



**Fig 4**

STEP 9. Make sure the shield is in the position you want and finish tightening the clamp. **FIG 4**



**Fig 5**

STEP 10. Trim off the excess end of the clamp. FIG 5

**Design Engineering, Inc. thanks you for your purchase!**

**We proudly produce exceptional quality heat and sound control products for the performance racing industry, powersports, marine, and RV markets. You can trust DEI products to solve your heat and sound control issues. If you have any issues, contact us right away.**

### **DEI Limited Warranty**

Design Engineering, Inc (DEI) believes in maintaining a high level of customer service and satisfaction.

DEI warrants to the original retail purchaser with proof of purchase for warranty determination that its products are free from defects in material and workmanship while purchaser owns the vehicle upon which such product(s) were originally installed. DEI's obligation under this warranty shall be limited to the repair or replacement of parts that are determined by DEI to be defective, or refund of the products original purchase price, at DEI's option, of the alleged defective product. We pledge that if at any time you encounter a problem with our products, we will strive to correct the problem in the most timely and efficient way possible, subject to the terms, conditions, and Limitations contained herein.

This warranty does not extend to damage or defect in the finish of a product or to any product that, in the opinion of DEI, has been misused, damaged by accident, or negligence, altered or modified in any way, installed contrary to DEI's installation instructions, or repaired by an unauthorized service facility.

DEI makes no warranty for products installed on vehicles used for race or competition purposes.

To make a claim under this warranty or receive service, purchaser must first return alleged defective product to place of purchase for warranty determination within thirty (30) days after purchase. In the event purchaser does not receive satisfaction from the original place of purchase, purchaser must contact DEI and request product return instructions. After receiving an assigned Return Good Authorization number, purchaser must return alleged defective product pre-paid along with original dated proof of purchase sales receipt and a written description of problem to DEI (address below).

**NO OTHER WARRANTY, EXPRESSED OR IMPLIED, IS APPLICABLE TO THIS PRODUCT. DESIGN ENGINEERING, INC. (DEI) SHALL NOT BE LIABLE FOR THE LOSS OF USE OF THE PRODUCT, INCONVENIENCE, ACTUAL OR ALLEGED DAMAGES WHETHER DIRECT OR INDIRECT OF ANY KIND, INCLUDING LIABILITY FOR SPECIAL, INCIDENTAL, CONSEQUENTIAL OR PUNITIVE DAMAGES, ARISING OUT OF THE USE OF, OR INABILITY TO USE THE PRODUCT, ACTUAL OR ALLEGED LABOR, INCLUDING THE COST OF REMOVING ANY PART, INSTALLATION, REINSTALLATION, FREIGHT CHARGES, TRANSPORTATION, OR OTHER RELATED CHARGES, OR FOR ANY BREACH OF ANY EXPRESS OR IMPLIED WARRANTY, INCLUDING ANY IMPLIED WARRANTY OF MERCHANTABILITY AND FITNESS FOR A PARTICULAR PURPOSE WHICH WOULD OTHERWISE BE APPLICABLE TO THIS PRODUCT.**

Some states do not permit limitation or exclusion of implied warranties; therefore, the aforesaid limitation(s) or exclusion(s) may not apply to the purchaser. This warranty gives you specific legal rights and you may also have other rights which may vary from state to state.

Specifications, materials, components, color, finish, model changes, availability, and prices are subject to change without notice.

DEI makes no representation or warranty, express or implied, that its products comply with federal, state, or local emission levels, noise levels, or safety standards. The purchaser assumes all responsibility for such use and compliance.

Many Design Engineering, Inc. products and components are recommended for OFF ROAD Use Only! Check local municipal laws in your area prior to installing any DEI performance products for regulations and enforced legislation. DEI will not be held liable for any incurred fees or penalties while using our products.

### **Returns Policy**

**DEI CANNOT ISSUE REFUNDS OR PROCESS RETURNS FOR ITEMS SOLD BY THIRD-PARTY RETAILERS AND DISTRIBUTORS (Amazon, Jegs, Meyer Distributing, Motor State, Summit Racing, Turn14, etc.).** All refunds and returns for items purchased through third-party retailers and distributors must be processed through the retailer or distributor that sold the item.

**For all items purchased directly through the DEI website,** you may return most new, unopened items within 30 days of delivery for a full refund. We'll also pay the return shipping costs if the return is a result of our error (you received an incorrect or defective item, etc.). Items with custom cut patterns and/or custom cut lengths of material cannot be returned. Clearance or discontinued items cannot be returned.

You should expect to receive your refund within four weeks of giving your package to the return shipper, however, in many cases you will receive a refund more quickly. This time period includes the transit time for us to receive your return from the shipper (5 to 10 business days), the time it takes us to process your return once we receive it (3 to 5 business days), and the time it takes your bank to process our refund request (5 to 10 business days).

If you need to return an item that was purchased directly through the DEI website, please [Contact Us](#) with your DEI website order number and details about the product you would like to return. We will respond quickly with instructions for how to return items from your DEI website order.