



LOCKING ROLL UP TONNEAU COVER

(2020-2023+ GLADIATOR JT)

INSTALLATION INSTRUCTIONS

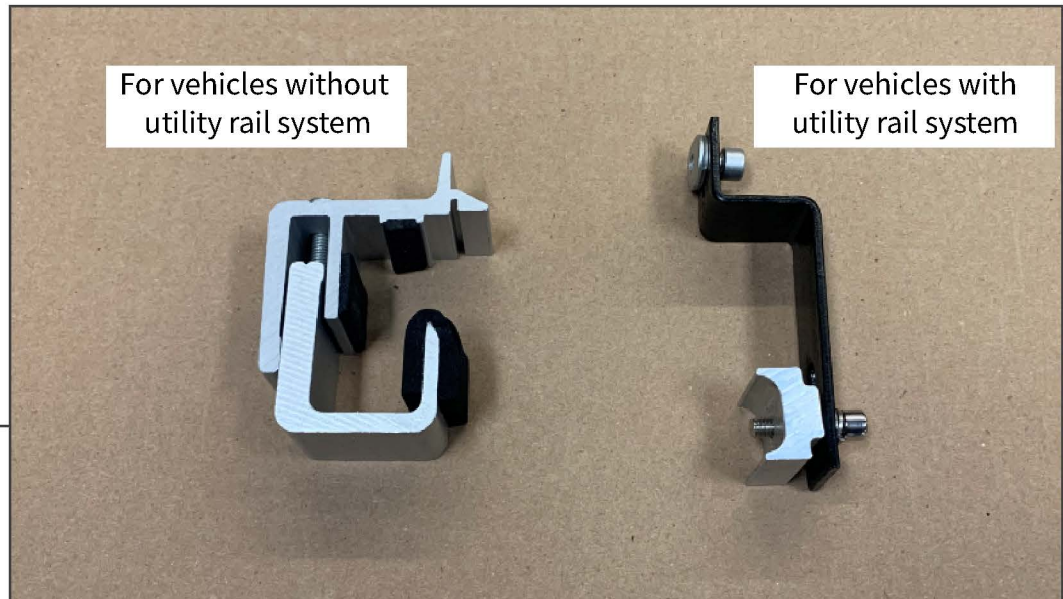
CONTENTS

- (1) Tonneau Cover
- (1) Pair of Side Rails
- (3) Cross Bars
- (6) Clamping Mounting Brackets
- (6) Trail Rail Mounting Brackets
- (1) Allen Key

TOOLS REQUIRED

Phillips Screwdriver

STEP 1



Determine the mounting brackets needed for the vehicle. Vehicles with and without the utility rail system will require the specific mounting brackets.

STEP 2



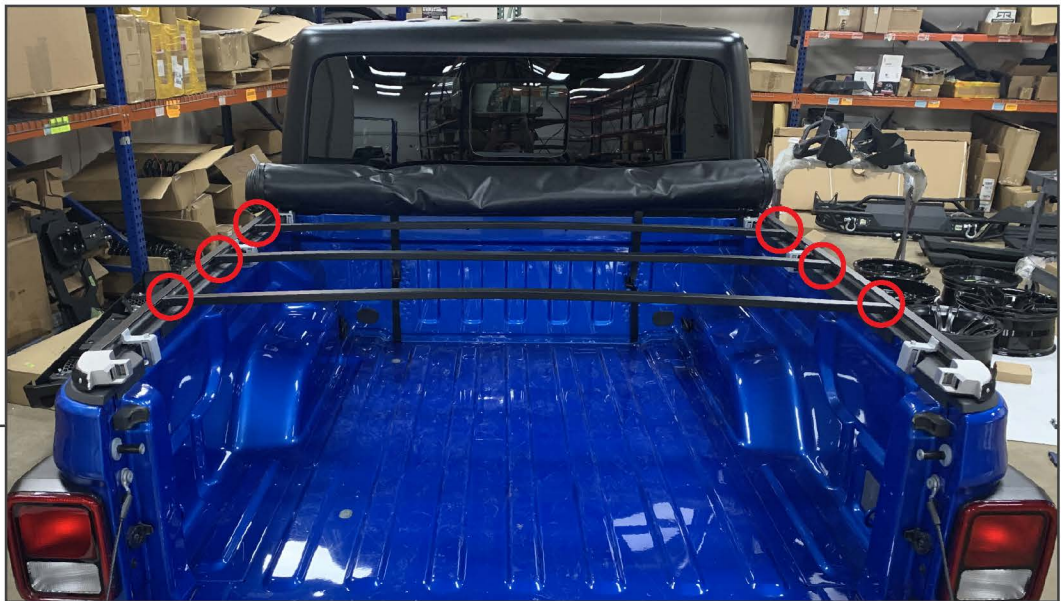
Loosely mount the tonneau cover bed rails to the vehicle using the (3) clamping brackets per side. The clamping brackets clamp inside the vehicle bed rail to the underside of the tonneau cover bed rail.

STEP 3



Install the tonneau cover to the end of the bed rails. Slide both ends of the cover into the tonneau cover bed rails. Tighten the adjustment knobs and adjustment screws to ensure the cover is secure in the rails.

STEP 4



Install the (3) cross bars into the notches in the tonneau cover bed rails. Tighten the (6) clamping brackets.



STEP 5

Unroll the tonneau cover over the bed. Ensure the alignment is even and the tailgate closes. To open the tonneau cover, pull the cable along the middle of the tonneau cover. Place the cross bars inside the rolled up tonneau cover when not being used.

Installation is now complete.



UTILITY RAIL VEHICLES

Remove the rail end caps from the utility rails. Slide the mounting brackets onto the tonneau cover rail. Slide each bracket onto the utility rail. Tighten the hardware to secure the brackets into place.