



ENHANCED RUBI RAILS

(2020+ GLADIATOR)

INSTALLATION INSTRUCTIONS

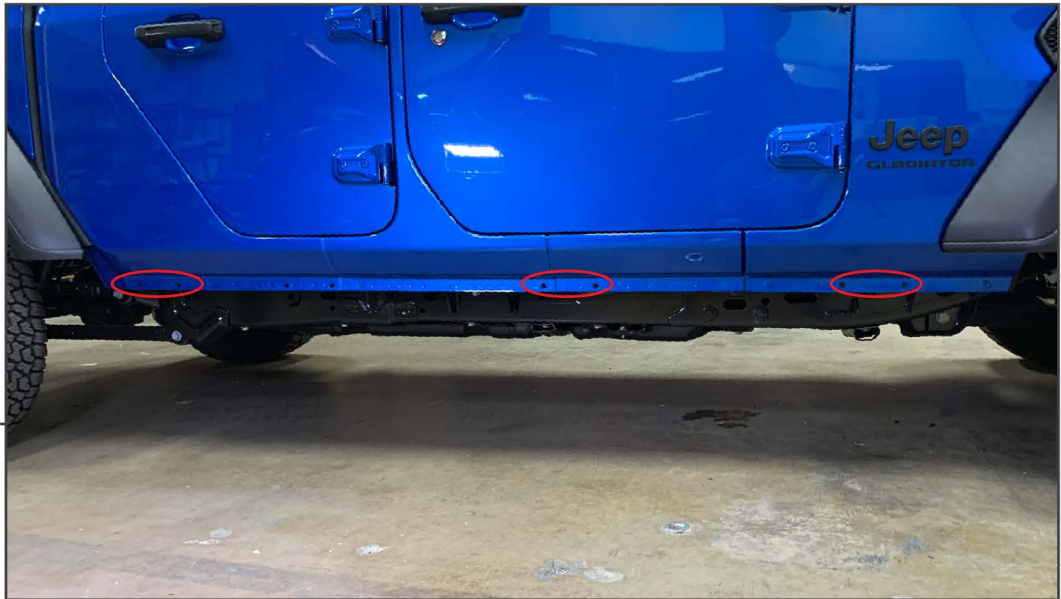
CONTENTS

- (2) Rubi Rails (L&R)
- (6) Brackets
- (6) M10x1.50 20mm Bolts
- (6) M10 Lock Washers
- (6) M10 Flat Washers
- (6) M8x1.25 35mm Bolts
- (6) M8 Lock Washers
- (6) M8 Flat Washers
- (12) M6 Washers
- (12) M6 Lock Nuts
- (6) 3mm Spacers
- (6) 2mm Spacers

TOOLS REQUIRED

- 10, 13, 15mm Socket
- Socket Wrench
- 10mm Wrench

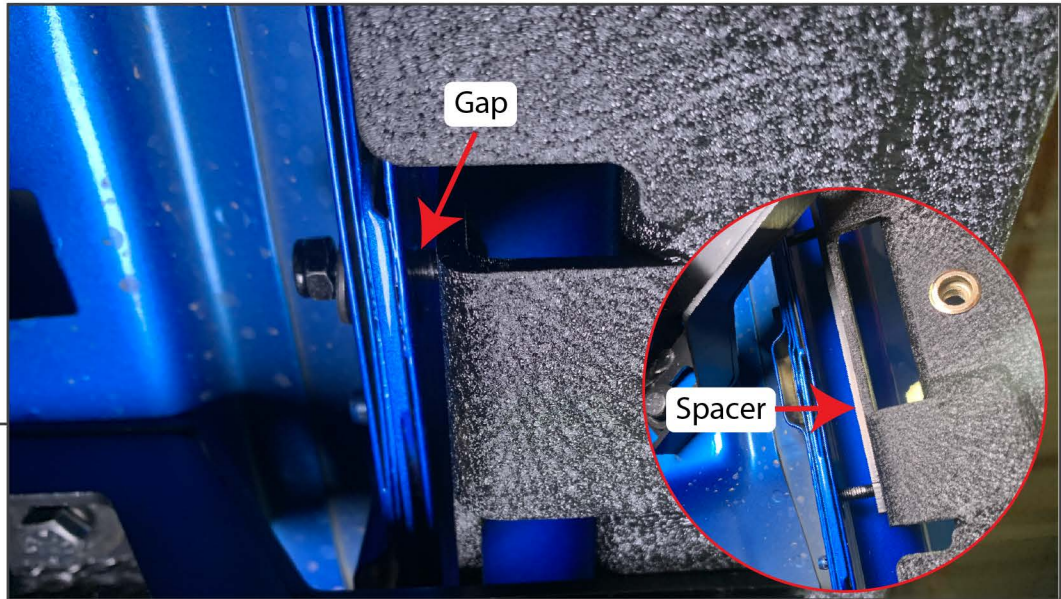
SKU # JG2564

**STEP 1**

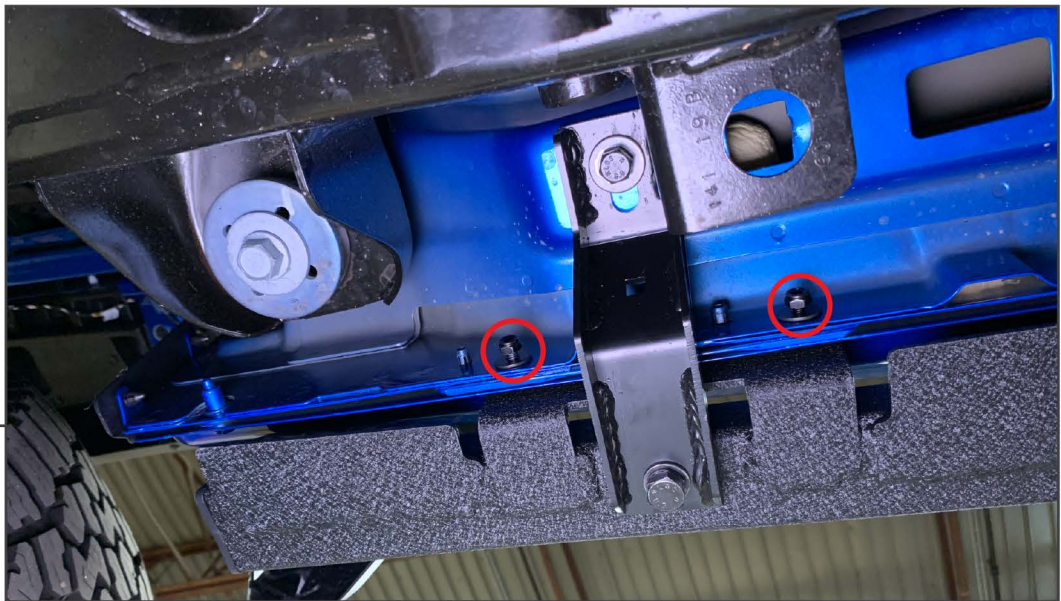
Identify the mounting location of the Rubi Rails on the vehicle. They mount to the pinch welds in (3) locations.

**STEP 2**

Loosely mount the support brackets to the using the supplier M8 hardware. (1) Bolt, (1) Lock Washer, and (1) Flat Washer per mounting location. Each bracket has an identifying mark on it. The Square hole is the front bracket. The round hole is the center bracket, and the bracket with no hole is the rear bracket.

STEP 3

Place the Rubi Rails onto the vehicle. Push the studs through the holes in the pinch weld. If there is a gap between the pinch weld and the Rubi Rail, install the provided spacers to eliminate the gap. The spacer will install between the Rubi Rail and the pinch weld.

STEP 4

Loosely secure the studs to the vehicle using the M6 hardware. (2) Flat Washers and (2) Lock Nuts per mounting location.

STEP 5

Then install the Rubi Rails to the bracket using the M10 hardware. Each mounting location will use (1) M10 Bolt, (1) M10 Lock Washers, (1) M10 Flat Washers.

STEP 6

Adjust Rubi Rails as needed and tighten all hardware. Installation is now complete.