



3” SIDE EXIT EXHAUST SYSTEM

(2020-2023+ GLADIATOR JT)

INSTALLATION INSTRUCTIONS

CONTENTS

- (1) Front Pipe
- (1) Muffler
- (1) ‘S’ Pipe
- (1) Exhaust Pipe - 2 Hangers
- (1) Exhaust Pipe - 1 Hanger
- (1) Exhaust Tip
- (5) 3” Exhaust Clamps

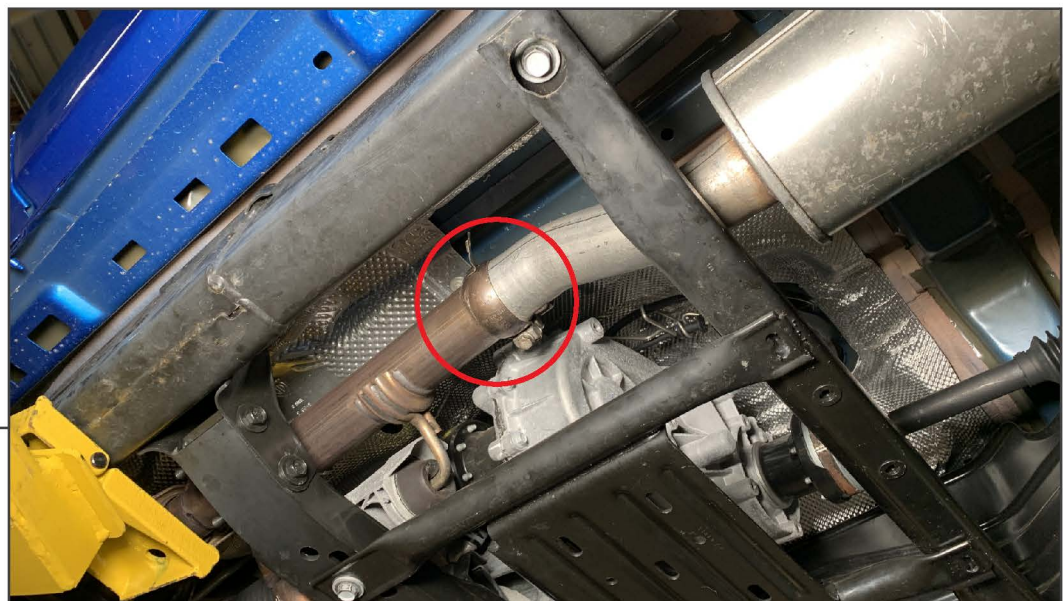
TOOLS REQUIRED

- 13mm, 15mm Socket
- Ratchet
- Floor Jack
- Jack Stands



STEP 1

With the vehicle on the ground, lower and remove the vehicle spare tire using the tools included with the vehicle (under the rear seat). This allows for maximum clearance to remove the original exhaust.



STEP 2

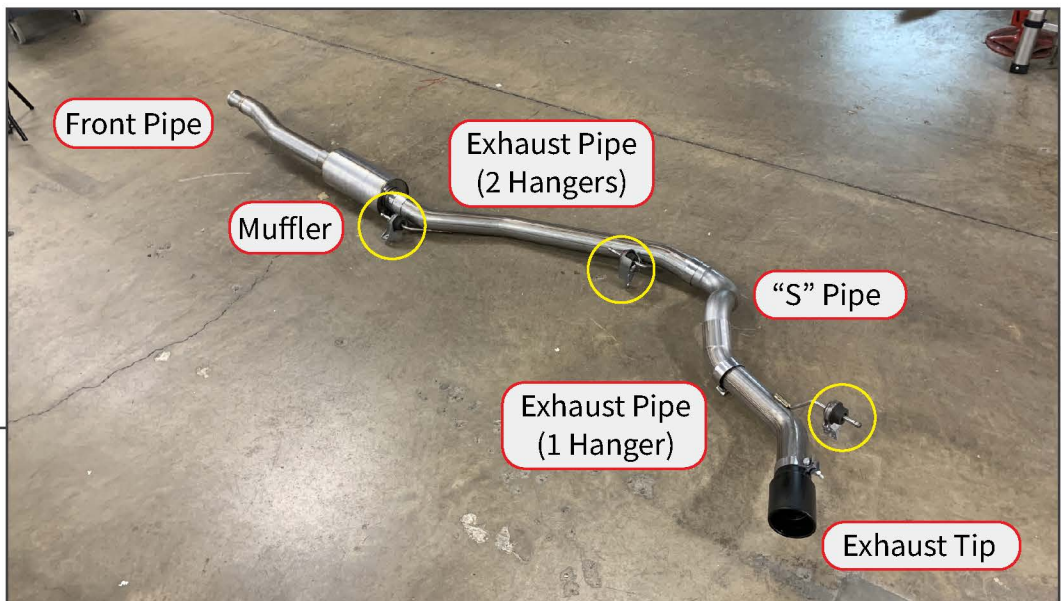
Safely lift the vehicle off the ground using a floor jack and jack stands. Locate the ball flange clamp towards the front of the vehicle. Loosen the clamp using a 13mm socket.



STEP 3

Locate the (3) exhaust hangers along the exhaust system. Remove the (2) 13mm bolts from each hanger to disconnect the exhaust system from the vehicle.

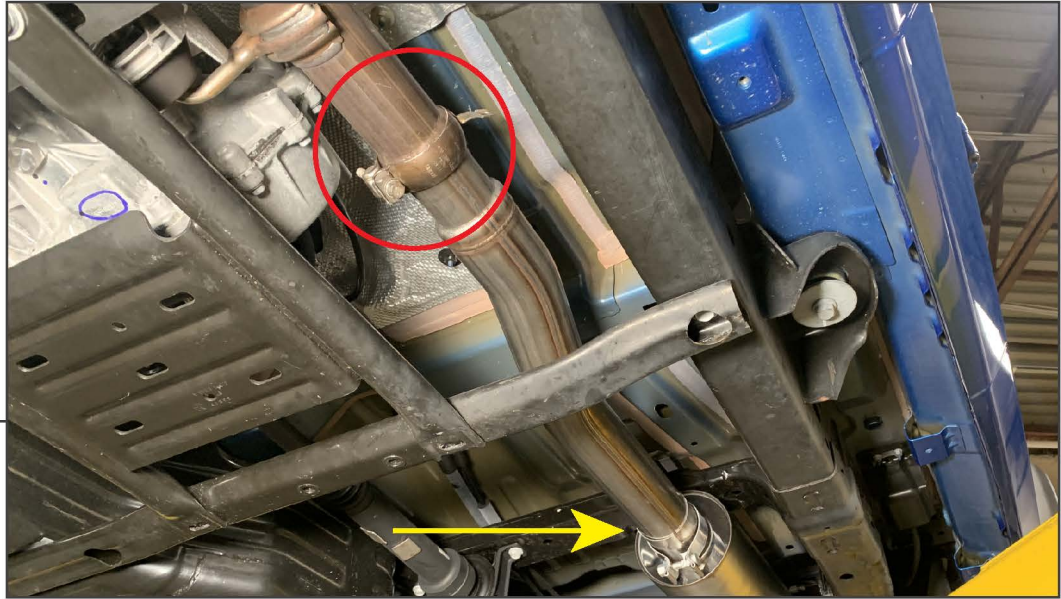
Remove the exhaust system from the vehicle. Remove the hangers from the exhaust system to use during installation.



STEP 4

Lay the new exhaust components and identify each component.

Transfer the exhaust hangers from the original exhaust system to the corresponding exhaust pipe in the original orientation.



STEP 5

Align the (1) front pipe to the vehicle, and loosely secure using the original ball flange clamp.

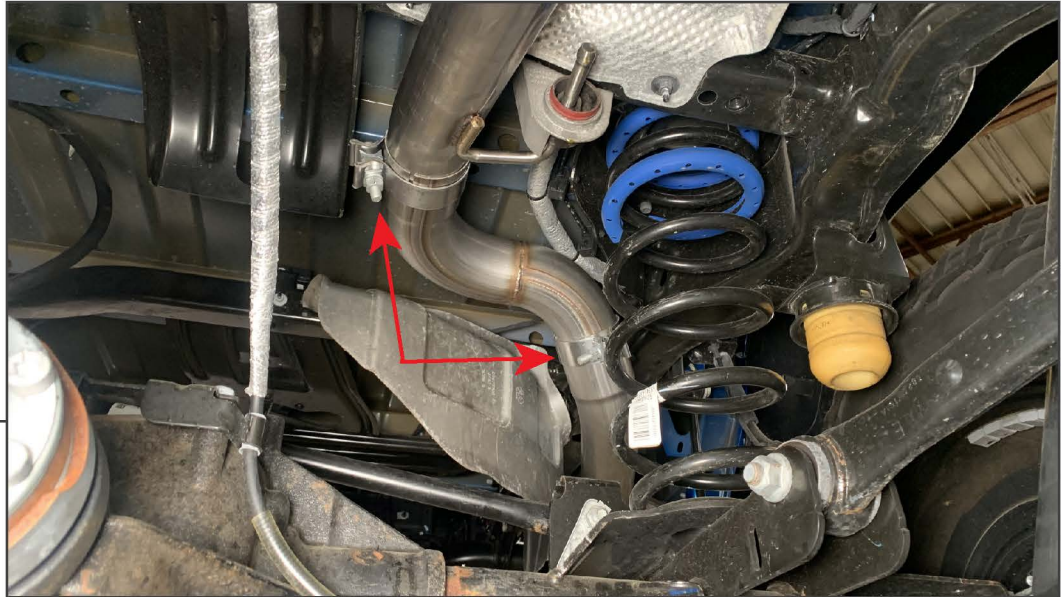
Place (1) 3" exhaust clamp at the rear portion of the pipe in preparation for the muffler.



STEP 6

Place the muffler onto the front pipe, loosely secure using (1) 3" exhaust clamp. Place (1) 3" exhaust clamp onto the rear end of the muffler.

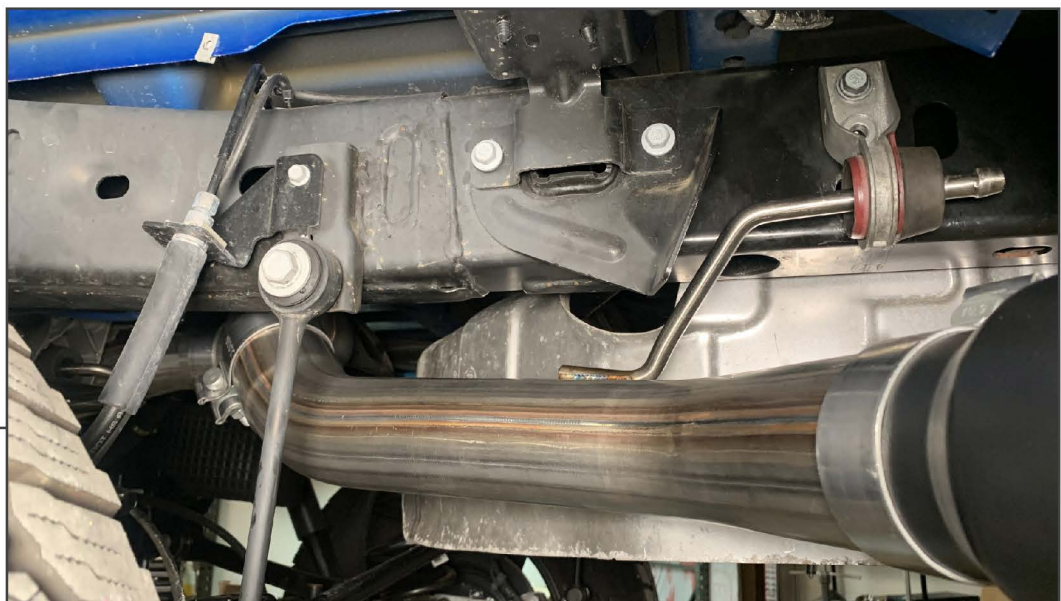
Install the exhaust pipe with 2 welded hangers into the muffler, loosely secure with the previously placed 3" exhaust clamp. Secure the muffler to the vehicle frame by bolting the (2) hangers to the vehicle using the (2) original 13mm bolts. Place (1) 3" exhaust clamp at the rear of the exhaust pipe in preparation of the "S" pipe.



STEP 7

Install the (1) "S" pipe to the previously installed exhaust pipe, loosely secure with the previously placed (1) 3" exhaust clamp.

Place (1) 3" exhaust clamp onto the "S" pipe in preparation for the following exhaust pipe.



STEP 8

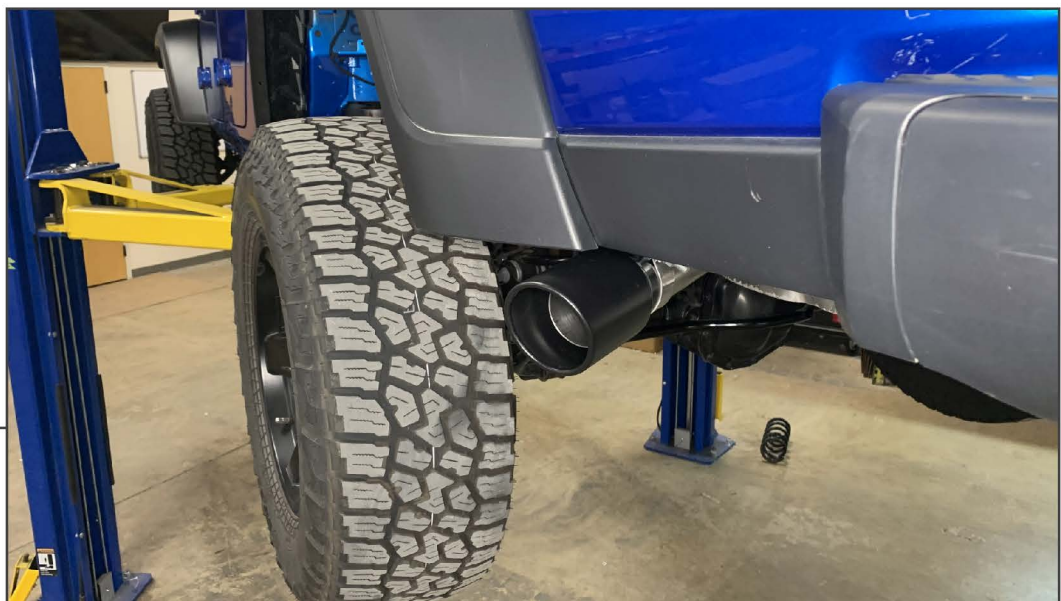
Install the remaining exhaust pipe [1 welded hanger] to the "S" pipe, and loosely secure using the previously placed (1) 3" exhaust clamp. Secure the pipe to the vehicle frame by bolting the hanger to the vehicle frame using the original (2) 13mm bolts.

Place (1) 3" exhaust clamp at the rear of the pipe in preparation of the exhaust tip.



STEP 9

Install the exhaust tip to the rear exhaust pipe, and loosely secure using the previously placed (1) 3" exhaust clamp.



STEP 10

Adjust the exhaust as necessary, then tighten all exhaust clamps to 45 ft. lbs. Lower the vehicle to the ground, and re-install the spare tire to the under-side of the vehicle.

Installation is now complete.