



1.5” LEVELING KIT

(2020-2023+ GLADIATOR JT)

INSTALLATION INSTRUCTIONS

CONTENTS

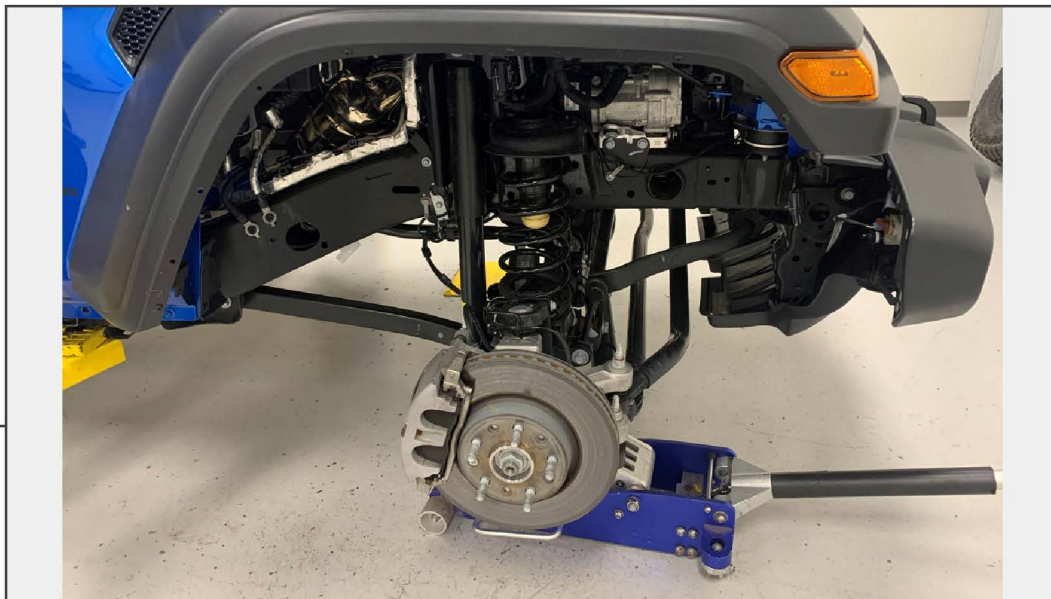
- (2) Front Coil Spring Spacers
- (2) Bump Stop Extensions
- (2) M10 x 60mm Tapered Allen Bolts
- (2) M10 Flange Nuts

TOOLS REQUIRED

- 10mm, 18mm, 21mm Sockets
- 6mm Allen Key/Socket
- Ratchet
- Pry Bar
- Jack & Jack Stands

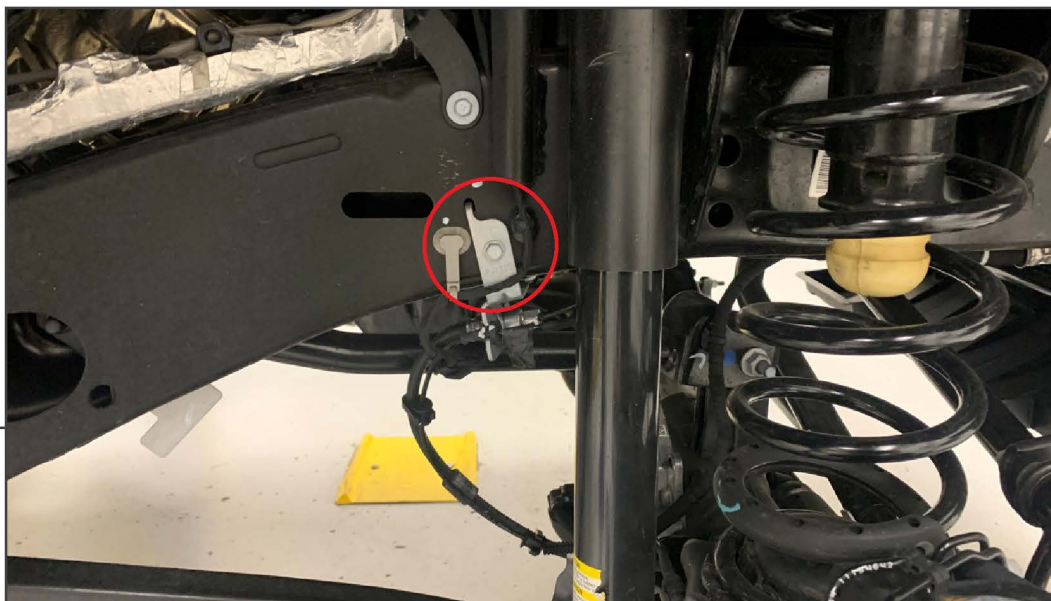
SKU # JG23516

STEP 1

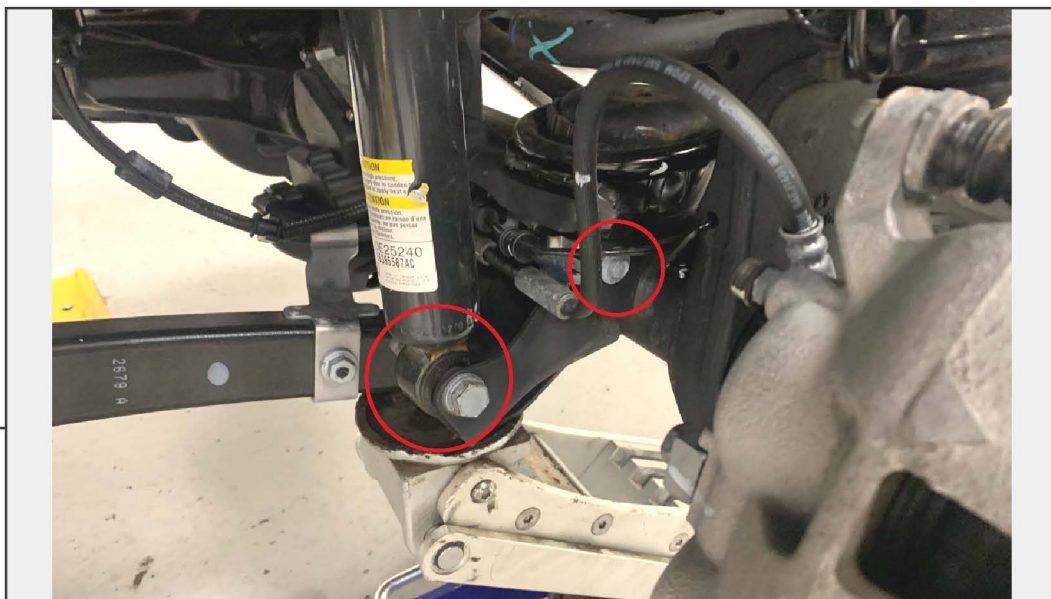


Lift and support the front of the vehicle using a jack and jack stands. Remove the front wheels from the vehicle. Place the floor jack under the lower control arm mount on the axle to relieve suspension tension.

STEP 2



Remove (1) 10mm bolt from the brake line mounting bracket. Allow bracket to hang away from the vehicle frame.



STEP 3

Remove the 18mm lower shock mounting bolt from the axle. Remove (1) 10mm bolt from the brake line bracket under the spring perch.



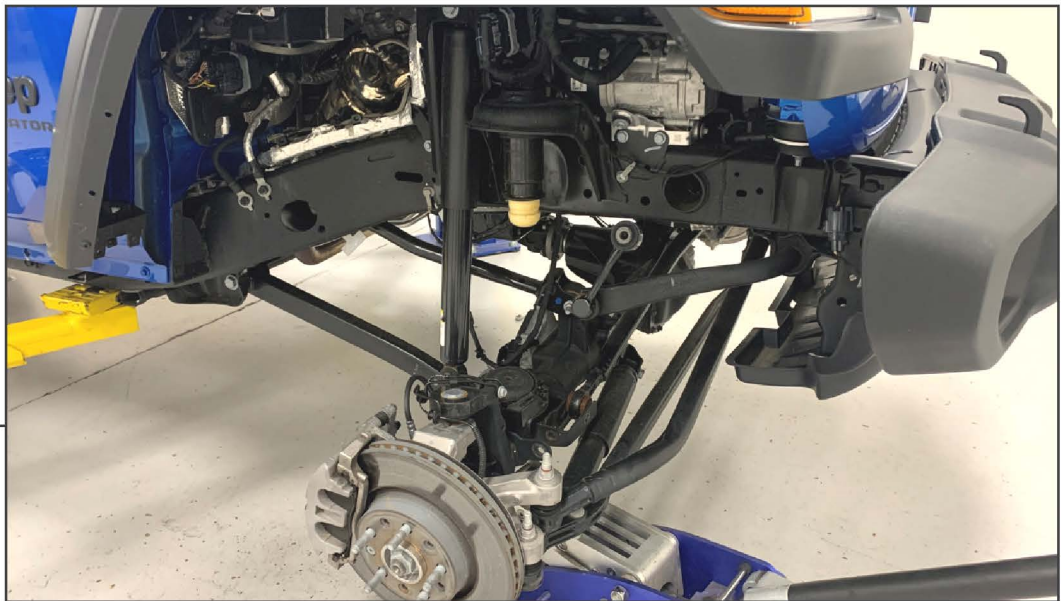
STEP 4

Remove the 18mm bolt securing the sway bar link to the axle.



STEP 5

Remove the 21mm bolt securing the track bar to the axle.



STEP 6

Slowly lower the floor jack to allow the axle to drop down to relieve coil spring tension. Remove the coil spring and upper coil spring isolator from the vehicle.

STEP 7



Locate the pre-drilled hole in the axle spring perch. Secure the (1) bump stop to the vehicle axle using (1) M10 x 60mm Tapered Allen bolt and (1) M10 flange nut. Tighten until secure.

STEP 8



Align the top of the original coil spring isolator to the bottom of the new coil spring spacer. Fit the assembly into the vehicle spring mount, and align the dowel pins on the coil spacer with the dowel pin holes in the spring mount on the vehicle frame.

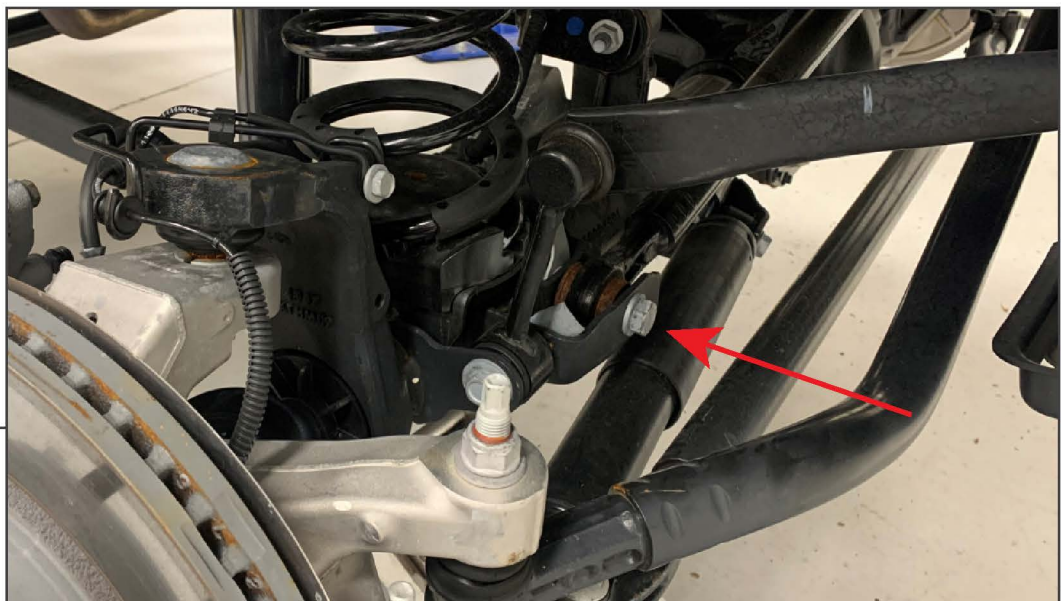
Fit the original vehicle coil spring into the vehicle to secure the spring spacer and isoлятор into place.

STEP 9



Lift the vehicle axle using a floor jack. Take note to the dowel pin alignment, as well as other components while lifting. Re-install all the original vehicle components to the vehicle following steps 1-4 in reverse order. See last page for torque specifications. Leave the track bar unbolted until the end of the installation.

STEP 10



Repeat steps 1-9 to the opposite side of the vehicle. Once all components are secure to the vehicle, re-install the vehicle wheels and lower the vehicle to the ground. With assistance, gently turn the steering wheel to allow the track bar to re-align with the vehicle axle. Secure the track bar re-using the original hardware.

See last page for torque specifications.



STEP 11

Installation is now complete.

Torque Specifications and Installation Notes

Sway Bar Link Bolt: 63 ft. lbs.
Lower Shock Absorber Bolt: 70 Plus 155° ft. lbs.
Track Bar Bolt: 70 Plus 155° ft. lbs.

Prior to Driving

- Double check all bolts are tightened.
- Professional Steering Alignment.
- Headlight Adjustment.
- Ensure brake line slack when sway bars are disconnected.
- Ensure OE front driveshaft clearance with sway bars disconnected.

Maintenance

- First 200 miles, re-torque all fasteners.
- Every 3000 miles, re-torque all fasteners & visually inspect suspension bushings for premature wear.

Special Consideration:

With any change to the factory suspension geometry there will be increased wear and tear, things such as suspension bushings etc. Ensure vehicle safety by frequently inspecting wear and tear components.