



TRAIL FORCE HD FRONT BUMPER

(2020-2022+ GLADIATOR JT)

INSTALLATION INSTRUCTIONS

CONTENTS

- (1) Front Bumper
- (2) 3/4"D-Rings
- (2) Fog Light Brackets
- (4) M12 x 1.75 Stud Plates
- (4) M12 x 1.75 Hex Bolts
- (4) M12 x 1.75 Nuts
- (8) M12 Flat Washers
- (8) M12 Lock Washers
- (12) M4 x 0.7 x 15mm Allen Bolts
- (8) M4 x 0.7 Nuts
- (20) M4 Flat Washers
- (12) M4 Lock Washers

TOOLS REQUIRED

- 7mm Socket
- 8mm Socket
- 16mm Socket
- 18mm Socket
- Socket Wrench
- Panel Removal Tool



STEP 1

Remove (7) plastic push clips from the upper bumper cover.



STEP 2

Unplug the fog lights from the electrical connector located on the RH side of the vehicle.

STEP 3



Remove (6) plastic push clips from the bumper end cap cover. Repeat this procedure to the opposite side of the vehicle.

Note: Depending on vehicle trim level, end cap cover may be secured with 7mm screws.

STEP 4



From under the vehicle, remove (7) plastic push clips from the splash shield. Remove (2) 8mm bolts from the rear of the splash shield. Remove the splash shield and the end cap covers from the vehicle.



STEP 5

From behind the bumper, remove (8) 18mm nuts to release the bumper. Once all hardware is removed, pull the bumper away from the vehicle.

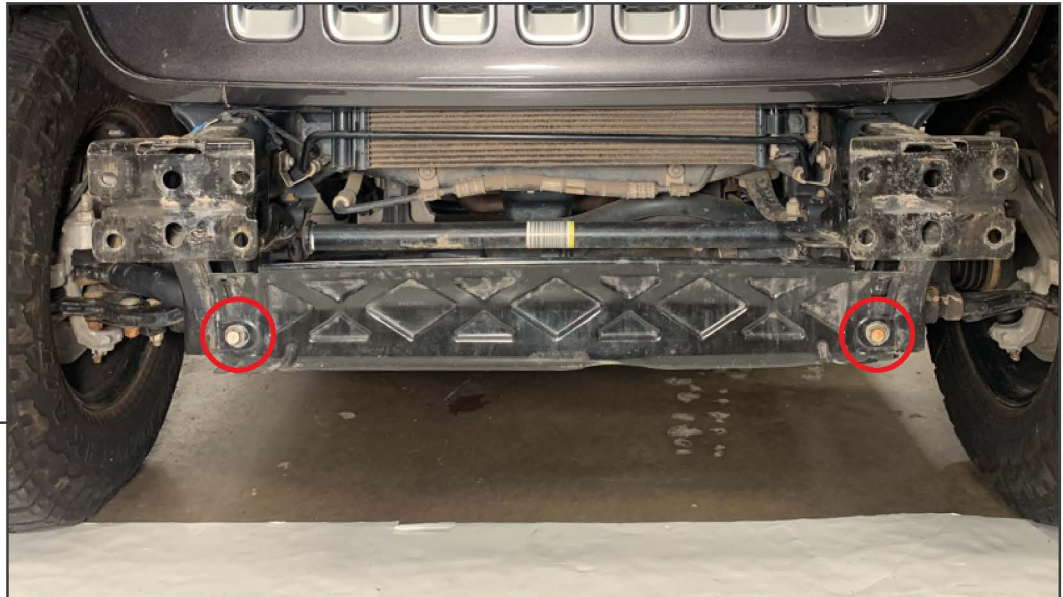
Place the original bumper on a soft surface, and remove the fog light harness from the original bumper.



STEP 6

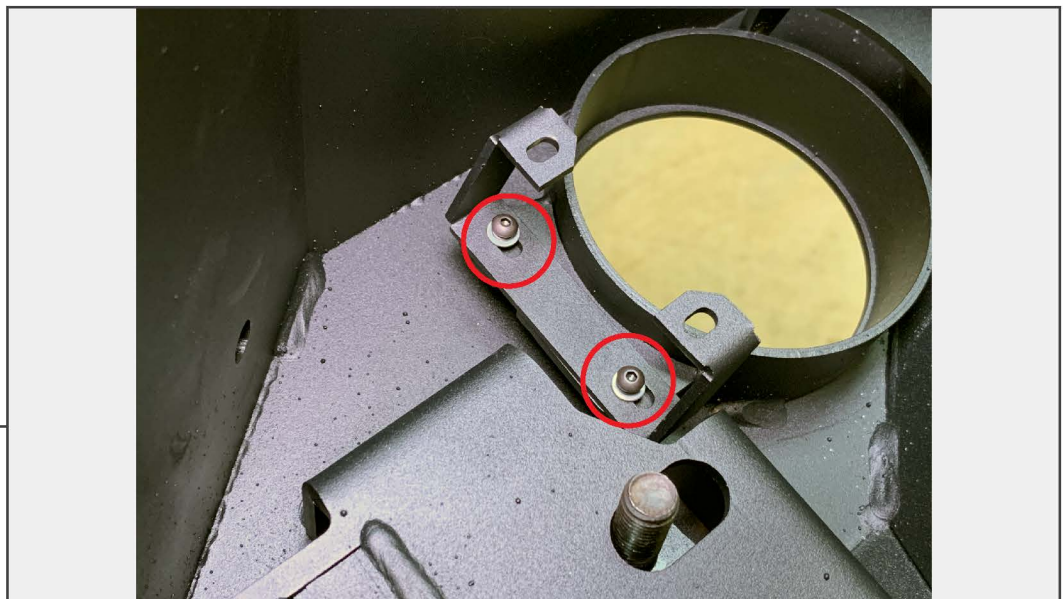
Remove the frame rail bracket from each side of the frame rail by removing (1) 16mm bolt per bracket.

Repeat this procedure for the opposite side frame rail brackets.



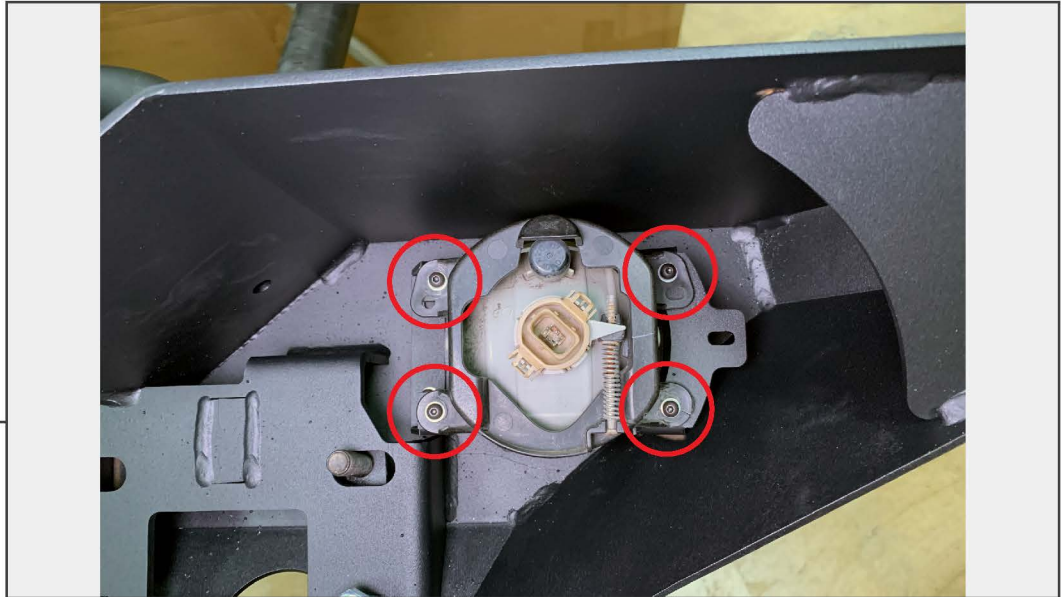
STEP 7

Remove (2) 16mm bolts from the lower metal shield, then lift upwards to unhook the shield from the vehicle.



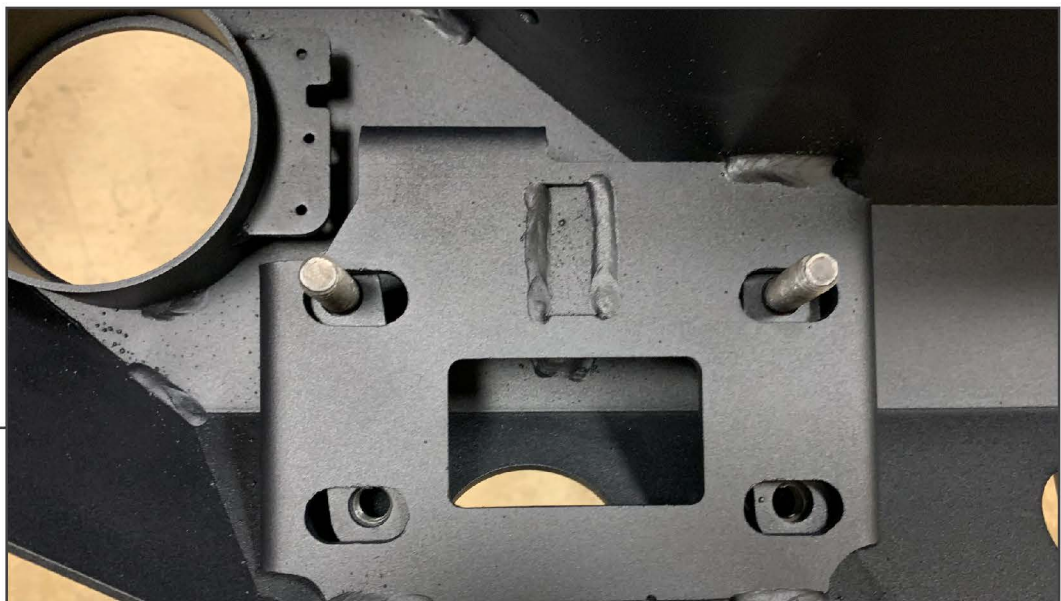
STEP 8

Using (2) M4 bolts, (2) M4 lock washers, and (2) M4 flat washers, attach the fog light bracket to the bumper. Repeat for the opposite side fog light bracket.



STEP 9

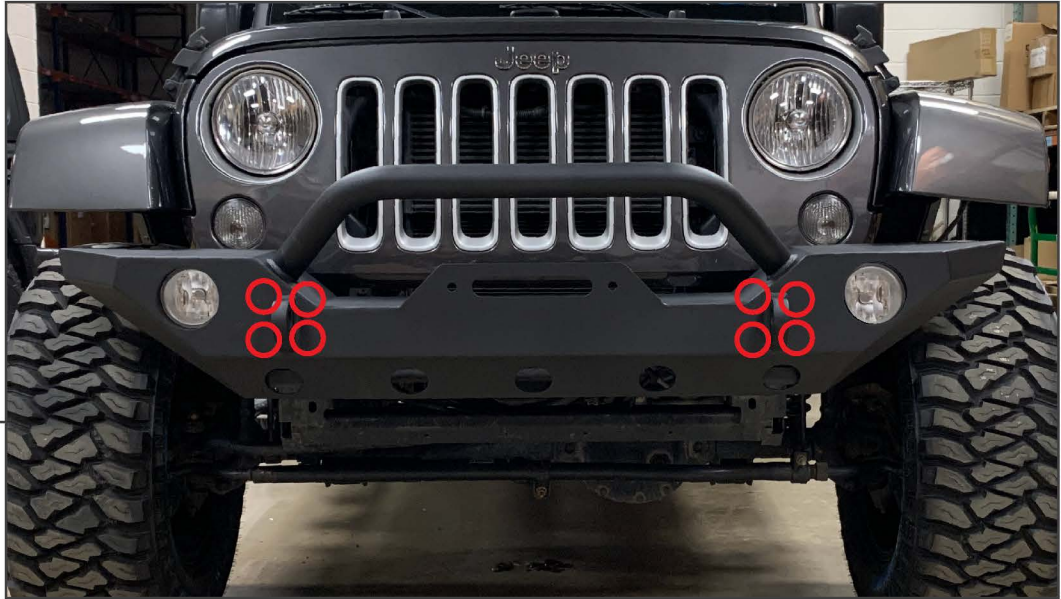
Using (4) M4 Allen bolts, (4) M4 lock washers, (4) M4 flat washers, (4) M4 nuts, attach the fog light to the previously installed fog light bracket. Repeat for the opposite side fog light.



STEP 10

Place the nut/bolt plates behind the bumper mounting pad. This will allow for minor adjustment side to side. Secure the studs into place using the (2) plastic stud holders.

Neatly route the fog light harness to both fog lights. Ensure the electrical connector is routed to the RH side of the vehicle. Extending wiring leads may be necessary.



STEP 11

With assistance, lift the bumper to the vehicle and align the stud plates to the bumper mounting holes in the frame rail. Secure the bumper using (4) M12 nuts, (4) M12 hex bolts, (8) M12 flat washers, and (8) M12 lock washers.



STEP 12

Install the (2) 3/4" D-Rings to the bumper.

Installation is now complete.