



# ROCK SLIDERS

(2020-2022+ GLADIATOR JT)

---

## INSTALLATION INSTRUCTIONS

### CONTENTS

---

(2) Rock Sliders (L&R)  
(12) Brackets  
(12) M10x1.50 35mm Bolts  
(24) M10 Flat Washers  
(12) M10 Lock Nuts  
(6) M8x1.25 35mm Bolts  
(6) M8 Lock Washers  
(6) M8 Flat Washers  
(12) M6x1.00 25mm Bolts  
(24) M6 Washers  
(12) M6 Lock Nuts

### TOOLS REQUIRED

---

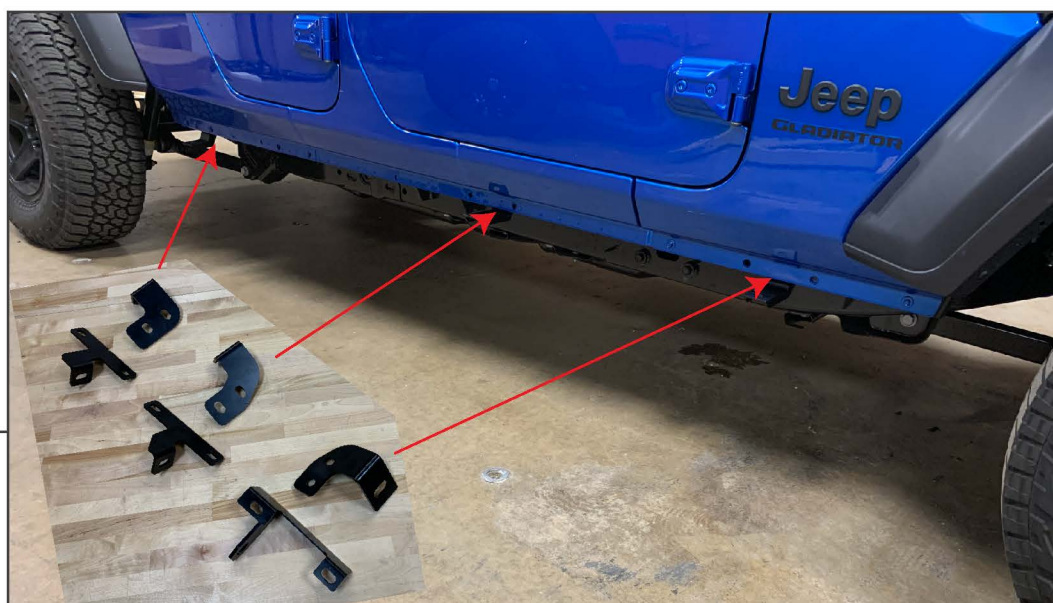
10, 13, 16, 17mm Socket  
Socket Wrench  
10, 16, 17mm Wrench

SKU # JG19328



## STEP 1

Identify the mounting location of the Rocker Steps on the vehicle. They mount to the pinch welds in (3) locations.



## STEP 2

Identify the brackets for each location on the vehicle, each bracket will only install one way. These brackets are stamped as follows:

**D: Driver**

DF: Driver Front  
DC: Driver Center  
DR: Driver Rear

**P: Passenger**

PF: Passenger Front  
PC: Passenger Center  
PR: Passenger Rear

**F: Front**

**C: Center**

**R: Rear**



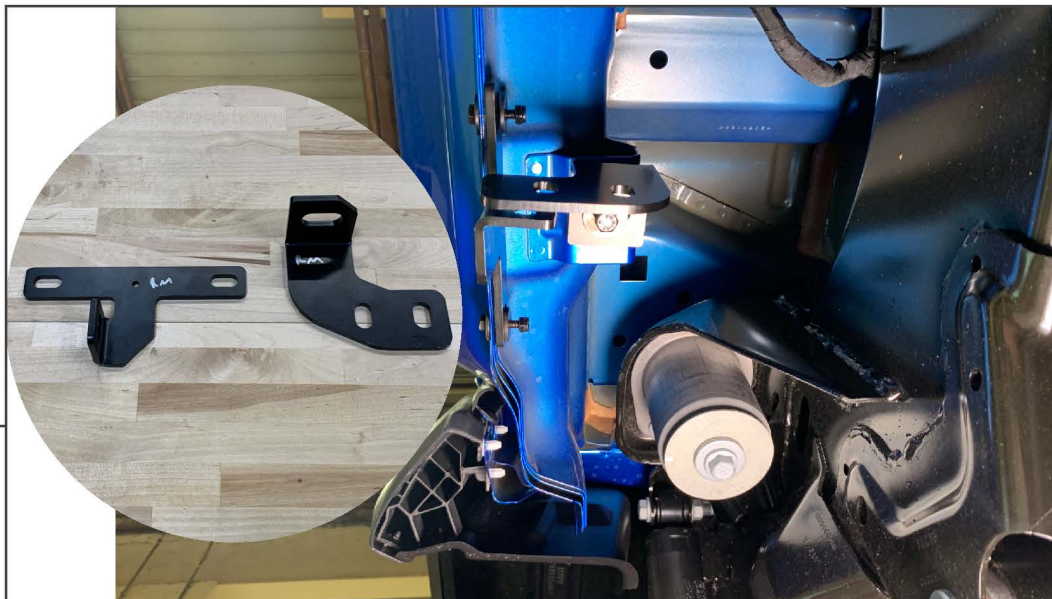
## STEP 3

Begin at the passenger front (PF) mounting location: Loosely assemble the brackets as shown.  
(2) M6x1.00 25mm bolts, (4) M6 washers, (2) M6 lock nuts will secure the pinch weld bracket to the vehicle.  
(1) M8x1.25 35mm bolt, (1) lock washer, (1) flat washer will secure the rock slider bracket to the vehicle.



## STEP 4

Passenger center (PC) mounting location: Loosely assemble the brackets as shown.  
(2) M6x1.00 25mm bolts, (4) M6 washers, (2) M6 lock nuts will secure the pinch weld bracket to the vehicle.  
(1) M8x1.25 35mm bolt, (1) lock washer, (1) flat washer will secure the rock slider bracket to the vehicle.



## STEP 5

Passenger rear (PR) mounting location: Loosely assemble the brackets as shown.

(2) M6x1.00 25mm bolts, (4) M6 washers, (2) M6 lock nuts will secure the pinch weld bracket to the vehicle.

(1) M8x1.25 35mm bolt, (1) lock washer, (1) flat washer will secure the rock slider bracket to the vehicle.



## STEP 6

With a helper, hold the rock slider to the vehicle. Install (2) M10x1.50 30mm bolt, (4) M10 washers, (4) M10 lock nut will secure the rock slider to the brackets.



---

## STEP 7

Repeat the process on the other side. Once all the hardware is loosely installed. Hold the step in position and tighten all hardware.

Installation is now complete.