



TAILGATE TRIM PANEL WITH LED LIGHTING

(2020+ GLADIATOR JT)

INSTALLATION INSTRUCTIONS

CONTENTS

- (1) Tailgate Trim Panel
- (3) Scotchlok Connectors
- (6) Cable Zip Ties

TOOLS REQUIRED

- Panel Removal Tool
- T-30 Torx Socket
- 8mm Socket
- Ratchet
- Isopropyl Alcohol
- Microfiber Cloth



STEP 1

Clean the vehicle tailgate using isopropyl alcohol and a microfiber cloth.



STEP 2

Remove the 'P' from the vehicle tailgate using a plastic pry tool. The 'P' alignment hole will be used for wiring routing.

STEP 3

Route the tailgate trim panel wiring through the 'P' alignment hole. Familiarize the alignment of the panel onto the vehicle prior to tape removal. Once familiar, peel the red tape backing from the tailgate panel and adhere the panel to the vehicle. Apply firm pressure to ensure proper adhesion.

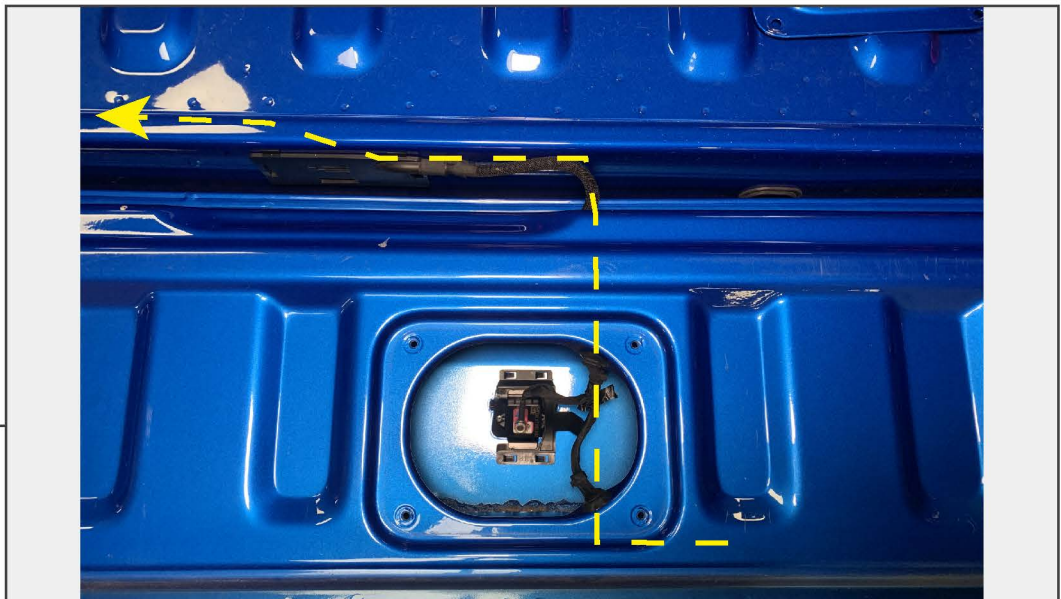
STEP 4

Remove (12) T-30 Torx screws from the inner tailgate panels and set the panels aside.

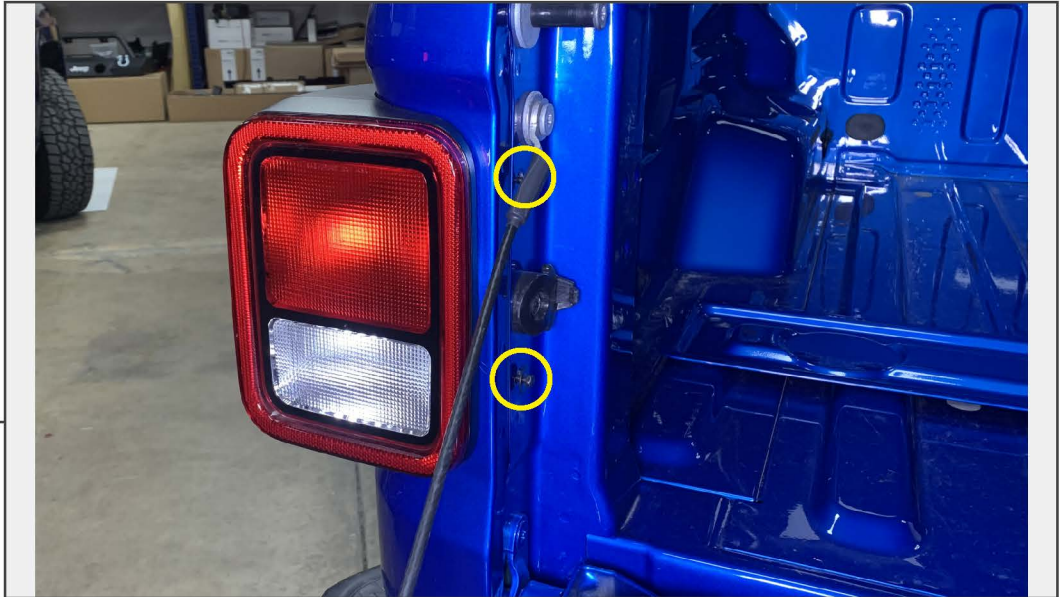
STEP 5

Unplug the 3rd brake light connector from the third brake light. Splice the (2) wires into the parking light following the diagram below. Once spliced, plug the connector back into the 3rd brake light. Note: Temporarily disconnect wiring retainers to allow wiring flexibility.

<u>Vehicle 3rd Brake Light Connector</u>	-	<u>Tailgate Trim Panel Harness</u>
White/Green	-	Red (+)
Black	-	Black (-)

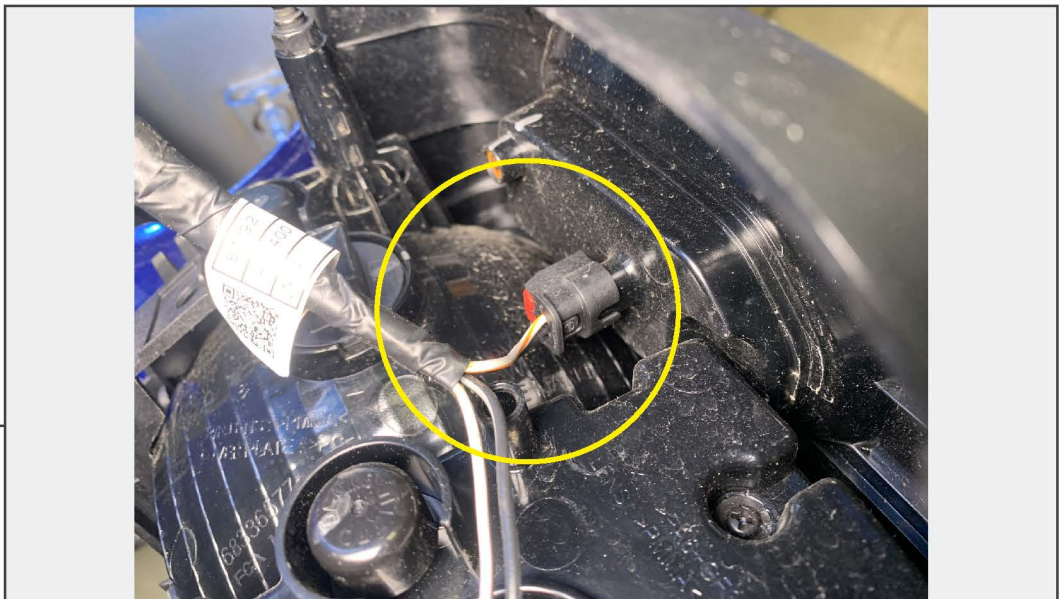
STEP 6

Neatly route the (1) wire lead into the original vehicle wiring harness routed under the vehicle bed. Route the wire lead towards the LH side tail light.



STEP 7

Remove the vehicle LH side tail light by removing (2) 8mm bolts from the light housing.



STEP 8

Unplug the parking lamp connector from the tail light. Splice the (1) wire lead into the parking light following the wiring diagram below. Once spliced, plug the connector back into the tail light.

Vehicle Parking Light Connector	-	Tailgate Trim Panel Harness
White/Orange	-	Green (+)



STEP 9

Re-install the vehicle tail light and the tailgate panels using the original hardware.

Installation is now complete.