



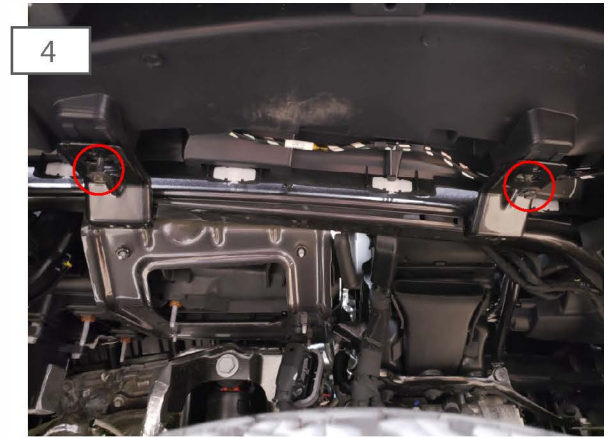
Deegan 38 Inner Fenders Front & Rear

Wrangler JL (18+)

J132020-JLA
J132020-JLB

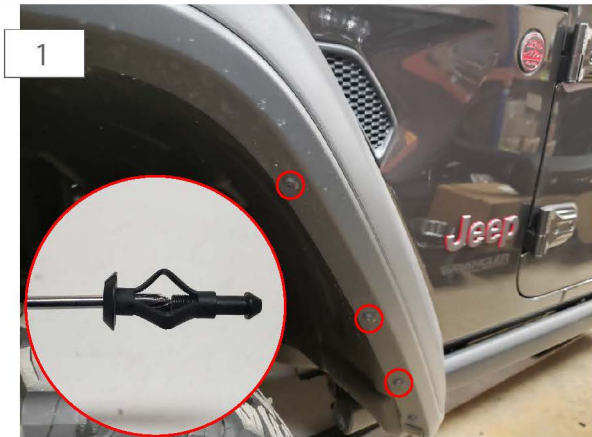


Using a trim panel removal tool, locate and remove the (2) lower push clips securing the back portion of the front fender liner in place.

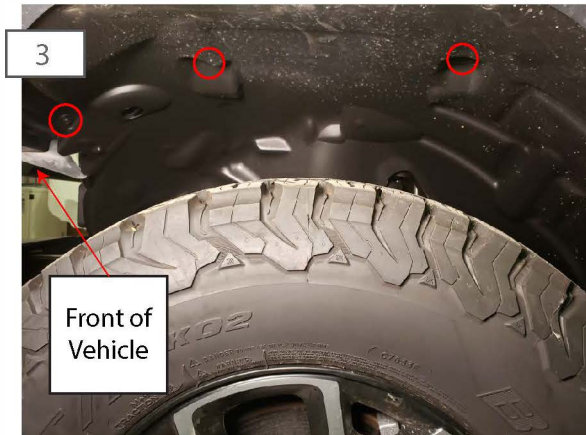


Locate, and remove the (2) 10mm screws holding the fender to the fender brackets.

Front Inner Fender Install:



Begin by removing the factory fender liners by removing the (3) plastic pop rivets located above by using a small Phillips head screw driver and pushing the center of the rivet through.



Located and remove the (3) 10mm screws securing the front portion of the front fender liner in place. Then fully remove the fender liner from the vehicle.



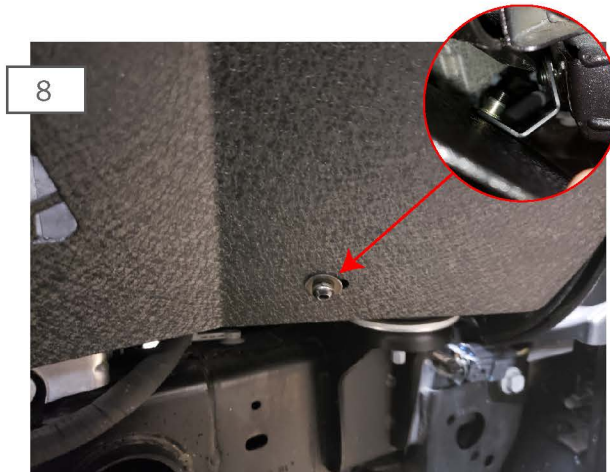
Locate, and unplug the fender wiring plug connector. Then locate and carefully depress the (11) plastic push clips using a trim panel removal tool, and remove the fender from the vehicle.



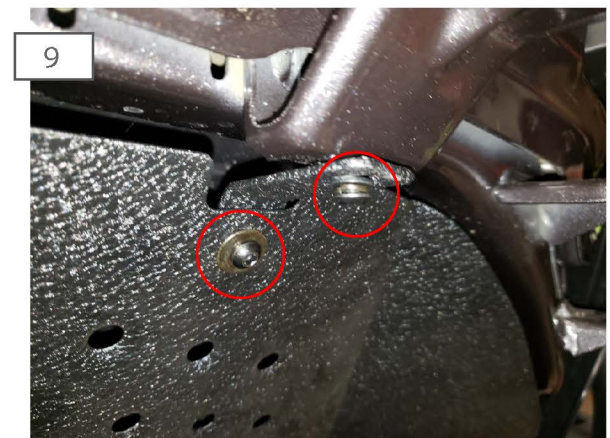
6
Locate the lower body mount, and insert the (1) speed clip.



7
Attach the lower body bracket to the speed clip that was installed in the last step using (1) M10x1.50x25mm Allen bolt, lock washer, and flat washer.



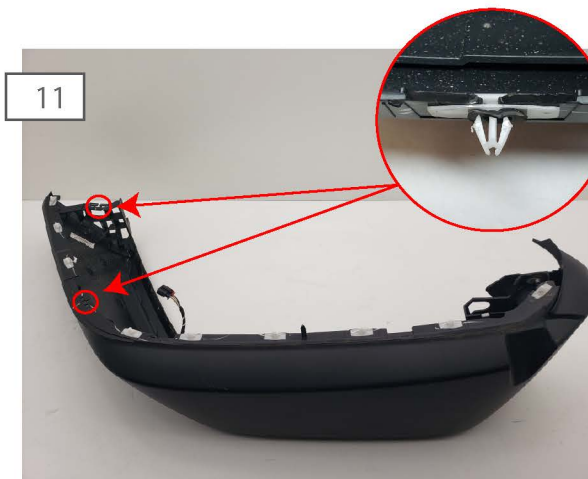
8
Hold the inner fender liner up to the wheel well. Attach the lower front portion of the inner fender liner to the lower body bracket using (1) M10x1.50x25mm Allen bolt, lock washer, and flat washer.



9
Attach the upper fender bracket to the fender mount using the (1) M10x1.50x25mm Allen bolt, lock washer, flat washers, and nuts. Then attach the upper portion of the fender liner to the upper fender bracket using (1) M10x1.50x25mm Allen bolt, lock washer, and flat washer.



10
Align the rear portion of the fender liner with the holes of the factory fender flare. Attach the rear portion of the fender liner to the body using (2) M10x1.50x25mm Allen bolts, lock washers and flat washers.



11
Remove the (2) plastic push clips shown in the picture above using a flat head screw driver. ****Note:** These locations are now being used by the rear portion of the fender liner hardware.



Reconnect the fender flare wiring harness. Align the fender flare with the factory hole locations and gently press the fender flare in to secure to the body. Then reinstall the (3) 10mm bolts from Step 3. Repeat steps 1-11 for the opposite side. Installation for the front is now complete.

Contents:

- (1) Driver Side Inner Fender
- (1) Passenger Side Inner Fender
- (2) Body Mount Brackets
- (2) Fender Mount Brackets
- (2) Speed Clips
- (12) M10x1.50x25mm Allen Bolts
- (12) M6 Lock Washers
- (12) M6 Big Flat Washers
- (4) M6 Small Flat Washers
- (2) M6 Nuts
- (1) Allen Wrench

Tools Required:

- Trim Panel Removal Tool
- Small Phillips Head Screw Driver
- Large Phillips Head Screw Driver
- 10mm Socket
- 1/4" or 3/8" Ratchet & Extensions

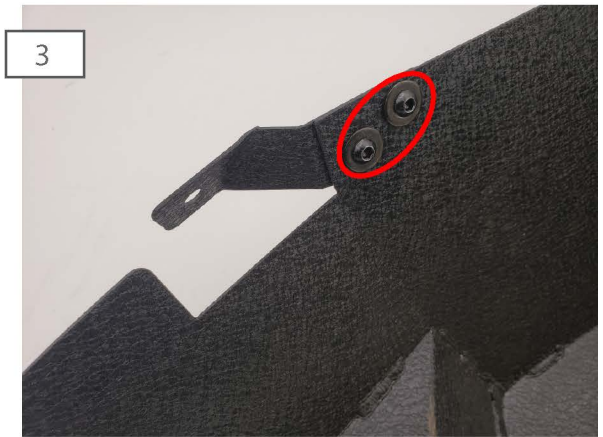
Rear Inner Fender Install:



Begin by removing the factory fender liner by removing the plastic pop rivets, (2) 10mm screws, and (2) push clips located above.



The fender has (13) plastic push clips. Carefully depress the clips using a trim panel removal tool. Then remove the fender from the vehicle.



Install the left side bracket to the rear upper left portion of the inner liner using (2) M10x1.50x25mm Allen bolts, large flat washers, small flat washers, and lock nuts.



Install the middle bracket to the middle upper portion of the inner liner using (2) M10x1.50x25mm Allen bolts, large flat washers, small flat washers, and lock nuts.



Install the right side bracket to the rear upper right portion of the inner liner using (2) M10x1.50x25mm Allen bolts, large flat washers, small flat washers, and lock nuts.



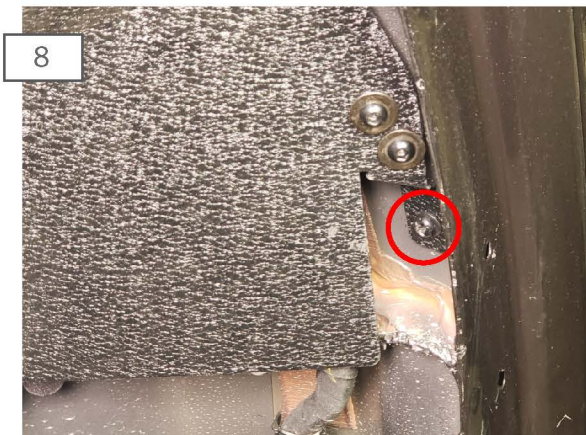
Beginning from right to left, press the upper mounting bracket against the inner body of the vehicle. Using a drill & 3/16" drill bit, carefully drill the mounting holes. Apply touch up paint to prevent corrosion.



Align the fender flare with the factory hole locations and gently press the fender flare in to secure to the body. Repeat steps 1-8 for the opposite side. Installation for the rear is now complete.



Hold the inner fender liner up to the wheel well. Align the inner fender liner to the lower factory body holes, and mount using (2) M10x1.50x25mm Allen bolts, large flat washers, small flat washers, and lock nuts.



Once 3/16" holes are drilled, secure the mounting brackets to the body of the vehicle using (1) Phillips head screw and small flat washer. Repeat for all (3) upper brackets.

Contents:

- (1) Driver Side Inner Fender
- (1) Passenger Side Inner Fender
- (2) Left Upper Brackets
- (2) Middle Upper Brackets
- (2) Right Upper Brackets
- (16) M10x1.50x25mm Allen Bolts
- (22) M6 Small Flat Washers
- (16) M6 Big Flat Washers
- (6) Phillips Head Screws
- (16) M6 Nuts
- (1) Allen Wrench

Tools Required:

- Trim Panel Removal Tool
- Small Phillips Head Screw Driver
- Large Phillips Head Screw Driver
- 10mm Socket
- 1/4" or 3/8" Ratchet & Extensions
- 3/16" Drill Bit & Drill