



APOCALYPSE GRILLE GUARD

(2020-2023+ GLADIATOR JT)

INSTALLATION INSTRUCTIONS

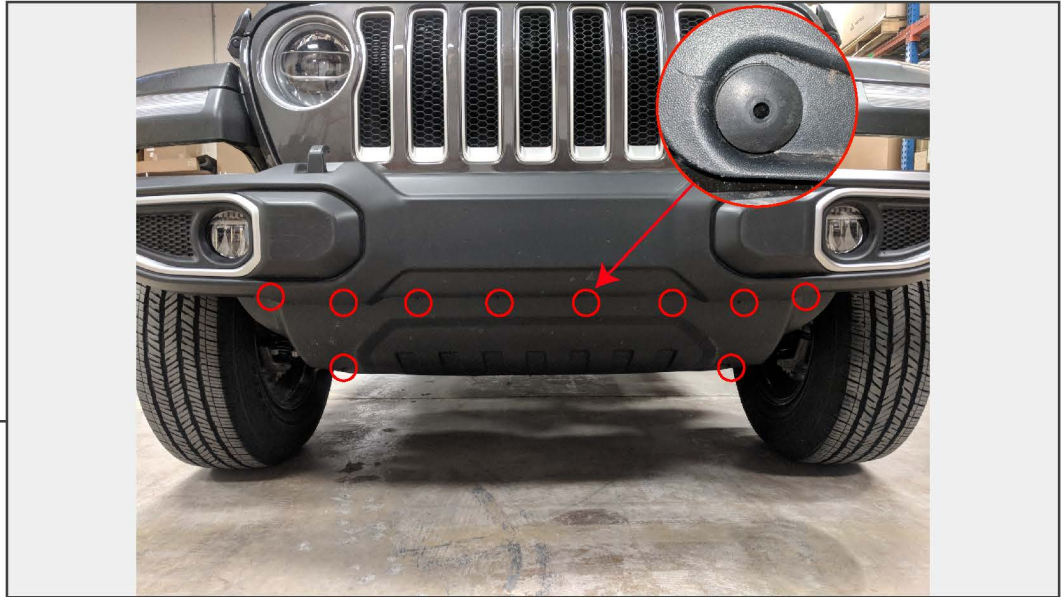
CONTENTS

- (1) - Grille
- (1) - Bumper
- (2) - D-Ring Brackets
- (1) - Middle Grille Bracket
- (2) - Corner Grille Brackets
- (8) - M12x1.75x40mm Bolts
- (16) - M12 Flat Washers
- (8) - M12 Lock Washers
- (8) - M12 Nuts
- (2) - M8x1.25x40mm Bolts
- (3) - M8x1.25x30mm Bolts
- (10) - M8 Flat Washers
- (5) - M8 Lock Nuts
- (4) - M6x1.0x20mm Screws
- (8) - M6 Flat Washers
- (4) - M6 Lock Nuts
- (2) - M6 Lock Washers
- (1) - Allen Wrench

TOOLS REQUIRED

- Ratchet
- Socket Set
- Torx Sockets/Bits
- Torque Wrench
- Allen Wrench
- Trim Panel Removal Tool

SKU # JG1410

**STEP 1**

From under the vehicle, remove the (8) plastic push pins securing the factory splash shield to the vehicle. Next, remove the (2) 8mm screws and remove the splash shield from the vehicle.

**STEP 2**

Remove the (2) upper plastic push pins securing the plastic cover to the frame rails.

STEP 3

Carefully unplug the foglight wiring harness from the connector.

STEP 4

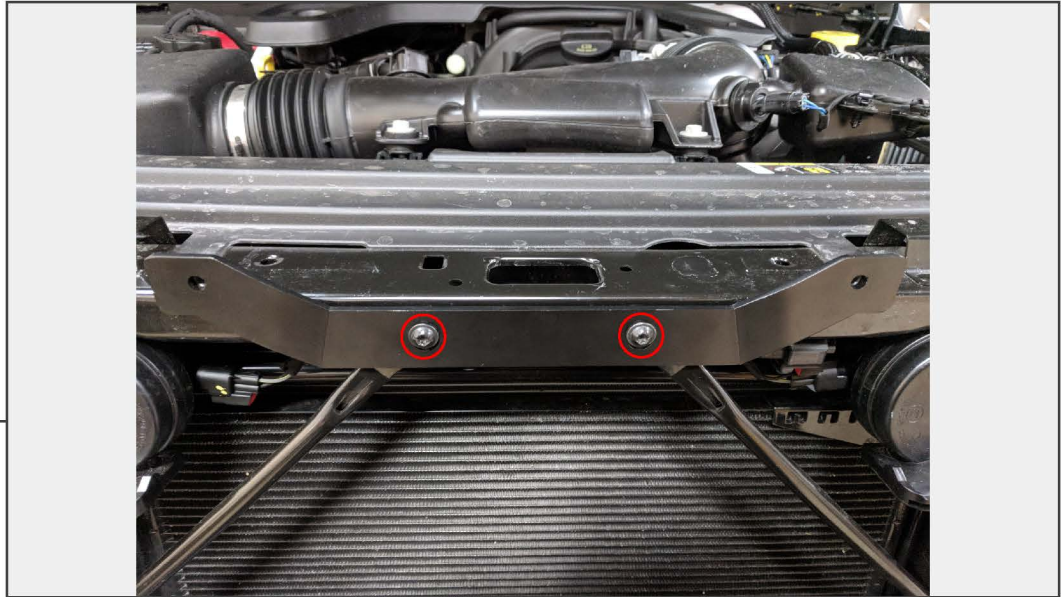
From under the vehicle, access and remove the (8) 18mm nuts, and (4) 18mm bolts securing the factory bumper to the vehicle. Then fully remove the bumper from the vehicle.

STEP 5

Locate, and remove the (6) push pins holding the grille in place. Gently pry the lower part of the grille away from the vehicle, and remove the grille completely.

STEP 6

Remove the (4) T-30 Torx bit screws holding the radiator support braces in place. Next, remove the (4) push clips, and (2) T-15 Torx screws holding the plastic radiator covers to the vehicle.

STEP 7

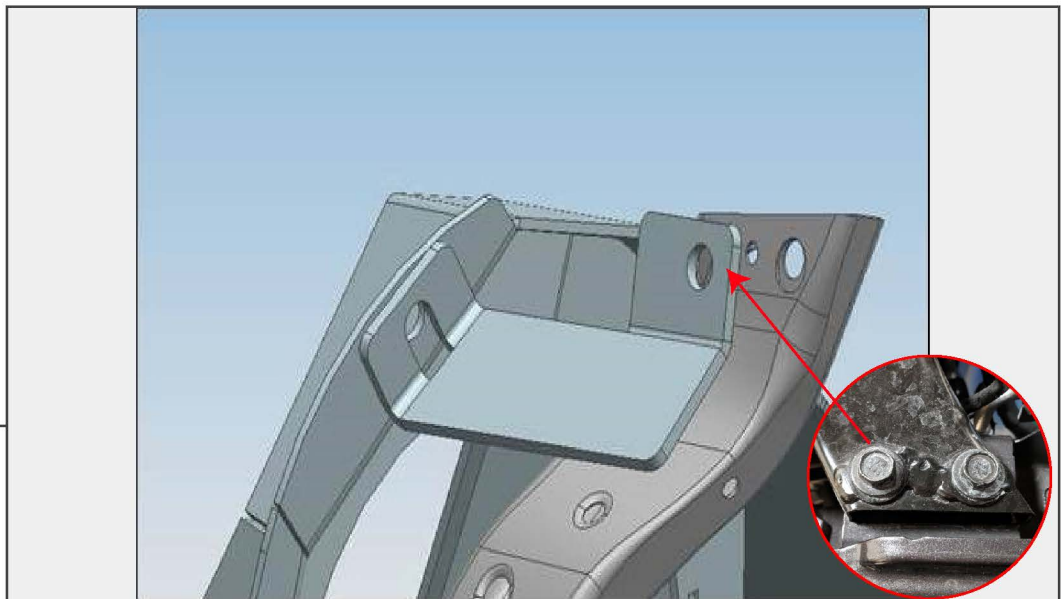
Re-install the factory radiator support braces, and the middle grille bracket using the factory T-30 Torx screws.

STEP 8

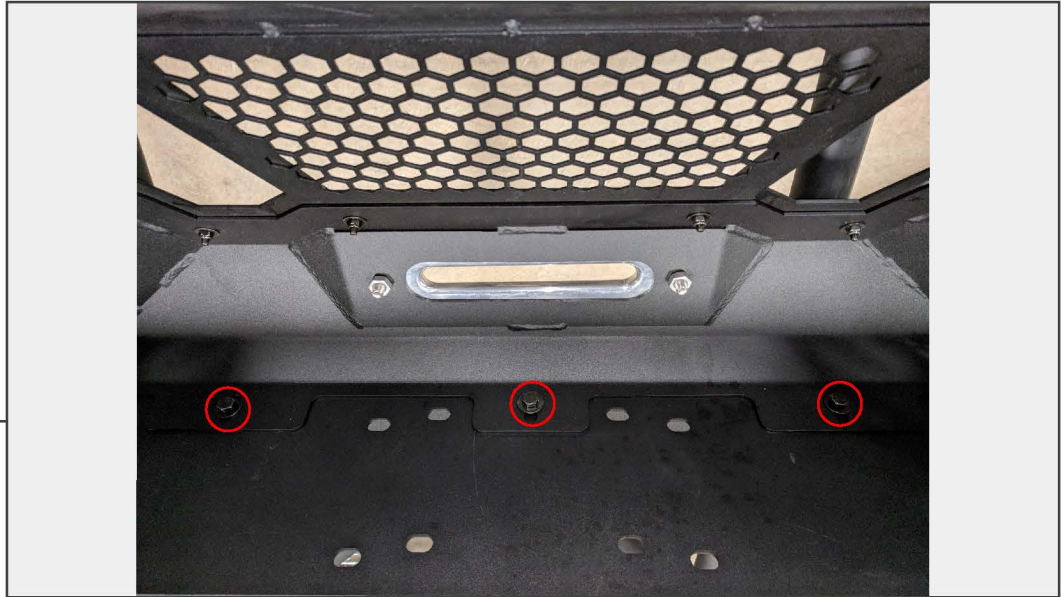
Install the D-Ring brackets to the bumper, and then to the frame of the vehicle using (8) M12 bolts, (16) flat washers, (8) lock washers, and (8) nuts. Torque to 40 ft-lbs.

**STEP 9**

Align the grille with the holes in the middle grille bracket. Secure the grille to the middle grille bracket using the (2) M6 screws, (4) flat washers, and (2) lock nuts.

**STEP 10**

Locate the factory 13mm radiator support bolt, and remove from the vehicle. Install the corner bracket to the radiator support using the factory bolt. Then, install the corner part of the grille to the bracket using the (1) M6 screw, (2) flat washers, and (1) lock nut.

STEP 11

With the upper part of the grille installed, secure the lower part of the grille to the bumper using the (3) M8x30mm bolts, (6) flat washers, and (3) lock nuts.

STEP 12

Double check to make sure all hardware is fully tightened.

Installation is now complete.