

REDROCK

ALUMINUM DOOR HANDLE COVER SET

(2018-2024+ WRANGLER JL - 4 DOOR)

INSTALLATION INSTRUCTIONS

CONTENTS

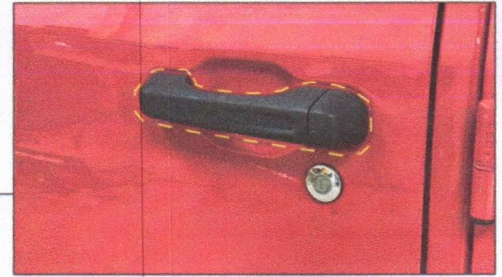
- (4) Side Door Handle Covers
- (1) Tailgate Handle Cover
- (4) Side Door Handle Cap Covers
- (1) Tailgate Handle Cap Cover
- (5) Large Door Handle Buttons
- (3) Small Door Handle Button
- (1) Adhesion Promoter Vial

TOOLS REQUIRED

- Isopropyl Alcohol
- Microfiber Cloth

SKU # J262846

REDROCK

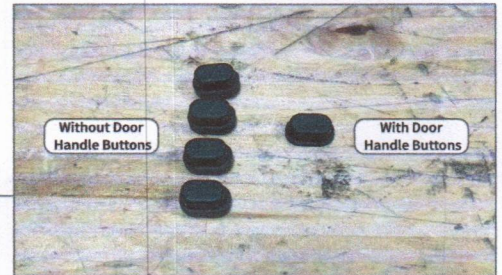


STEP 1

Using isopropyl alcohol and a microfiber cloth, clean the vehicle door handle. Allow to fully dry.

Apply the included adhesion promoter to the door handle. Allow to fully dry.

Test fit the door handle covers to the vehicle to familiarize fitment.

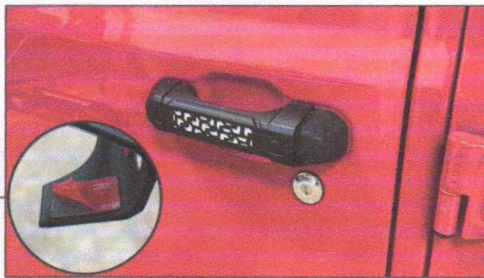


STEP 2

Lay out and identify the included door handle buttons using the diagram above (the thinner buttons are used for door handles with buttons). Once familiar with the required buttons for the application, fit the button to the door handle.

Note: The buttons do not need to be used, if desired.

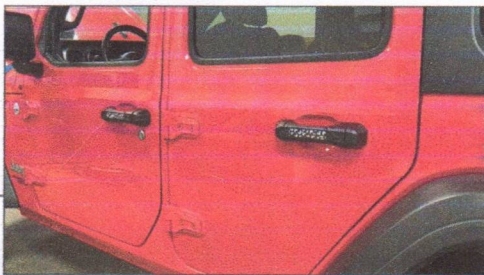
REDROCK



STEP 3

Peel the red double sided tape backing from the door handle cover. Firmly press the door handle cover to the vehicle to encourage adhesion.

Once the handle cover is installed, install the door handle cap cover using the double sided tape.



STEP 4

Repeat steps 1-3 for all remaining door handle covers.

Installation is now complete.