

TC3 HD ROCKER STEP

PART #: J262844

REDROCK

FITS: 2007-2018 Jeep Wrangler JK 2 Door



60-120 min



Cutting Not Required



Drilling Not Required

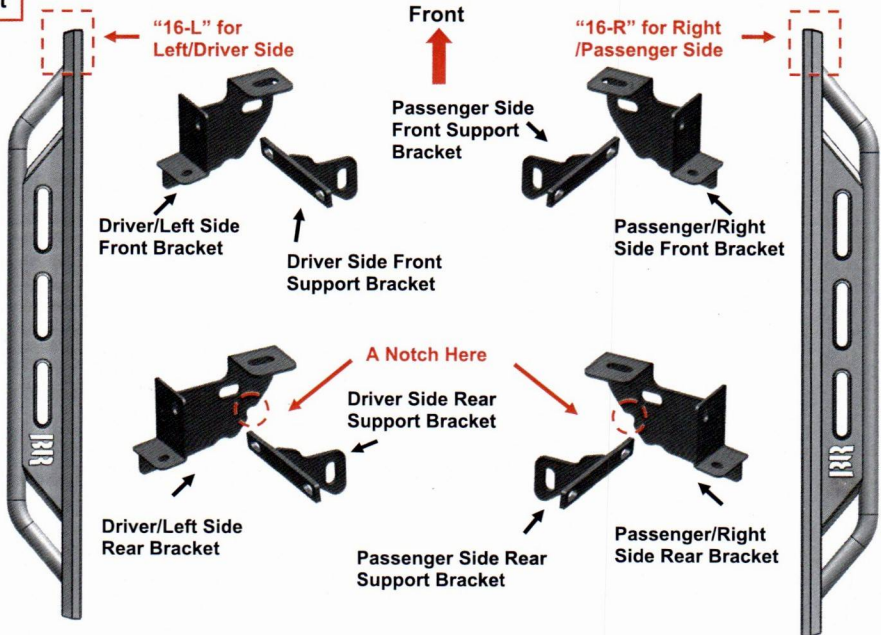
Torque & Tools

Fastener Size	Tightening Torque (ft-lbs)	Wrench Required	Allen Wrench Required	
■ 6mm	■ 7-8.5		<input type="checkbox"/> 4mm	
■ 8mm	■ 18-20		■ 10mm	<input type="checkbox"/> 5mm
■ 10mm	■ 35-40		■ 13mm	<input type="checkbox"/> 6mm
<input type="checkbox"/> 12mm	<input type="checkbox"/> 60-70		■ 16mm	<input type="checkbox"/> 8mm
		<input type="checkbox"/> 18mm		

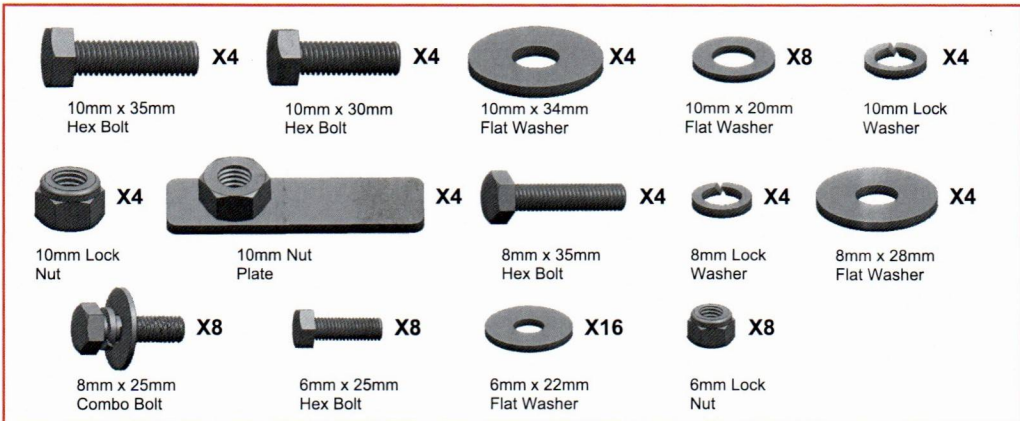
BEFORE INSTALLATION

REMOVE CONTENTS FROM BOX. VERIFY ALL PARTS ARE PRESENT. READ INSTRUCTIONS CAREFULLY BEFORE STARTING INSTALLATION. ASSISTANCE IS RECOMMENDED.

Part List



REDROCK

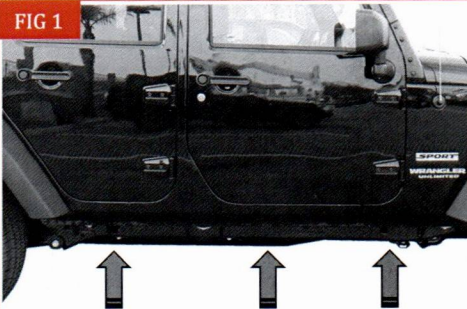


PLEASE NOTE THAT THE FOLLOWING PICTURES ARE BASED ON THE PASSENGER SIDE INSTALLATION

STEP 1

Start installation toward the front of the Passenger/Right side of the vehicle, Locate the front, center and rear mounting locations (Fig 1).

FIG 1



(Fig 1) Passenger/Right mounting locations

STEP 2

Determine if the vehicle has an open floor panel or a threaded hole in the floor panel

(1) Vehicles with open mounting location:

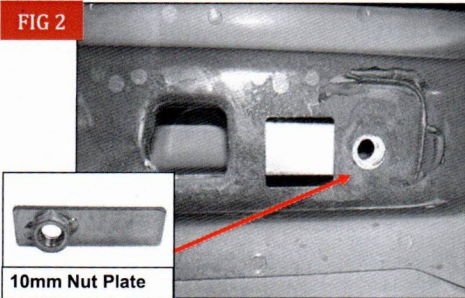
- Insert (1) 10mm Nut Plate into the large square opening in the floor panel. Line up the threaded nut with the hole in between the pair of holes on the pinch weld, (Fig 2).
- Select the Passenger/Right Front Mounting Bracket. **NOTE: There is a small notch at the Bottom of the Center Brackets and the notch of Rear Brackets is at the Top. Please identify the Front, Center and Rear Brackets according to the Part List.**
- Attach the Bracket to the Nut Plate with (1) **10mm x 35mm** Hex Bolt, (1) 10mm Lock Washer and (1) **10mm x 34mm** Flat Washer, (Fig 3). Do not tighten hardware.

(2) Vehicles with factory threaded hole in floor panel:

- Select the Passenger/Right Front Mounting Bracket. Attach the Bracket to the front mounting location (Fig 4) with (1) 8mm Hex Bolt, (1) 8mm Lock Washer and (1) 8mm Flat Washer, (Fig 5). Do not tighten hardware.

REDROCK

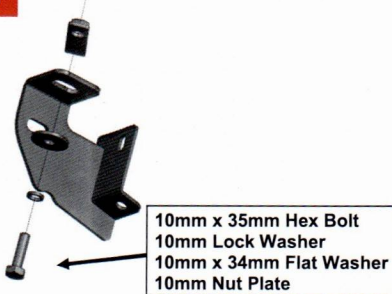
FIG 2



10mm Nut Plate

(Fig 2) Passenger/Right front mounting location (Models open mounting location shown)

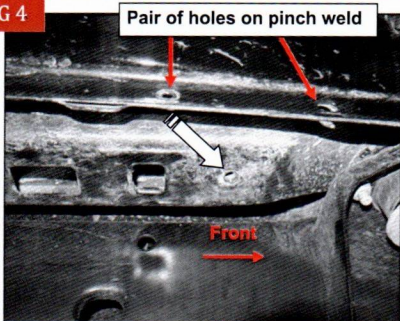
FIG 3



10mm x 35mm Hex Bolt
10mm Lock Washer
10mm x 34mm Flat Washer
10mm Nut Plate

(Fig 3) Attach the Passenger/Right Front Mounting Bracket to the Nut Plate

FIG 4

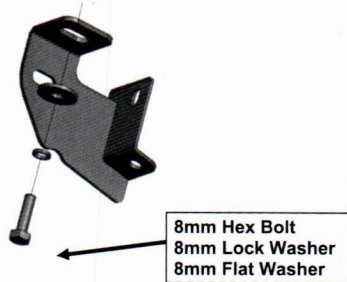


Pair of holes on pinch weld

Front

(Fig4) Passenger/Right front mounting location (Models with threaded insert shown)

FIG 5



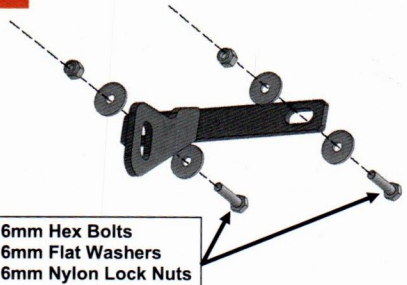
8mm Hex Bolt
8mm Lock Washer
8mm Flat Washer

(Fig5) Attach the Passenger/Right Front Mounting Bracket to the Threaded Hole

STEP 3

Select (1) Passenger/Right Support Bracket (#2). Attach the Support Bracket to the pinch weld with (2) 6mm Hex Bolts, (4) 6mm Flat Washers and (2) 6mm Nylon Lock Nuts, (Fig 6).

FIG 6



(2) 6mm Hex Bolts
(4) 6mm Flat Washers
(2) 6mm Nylon Lock Nuts

(Fig 6) Attach (1) Passenger/Right Support Bracket (#2) to the (2) holes in the pinch trim in the front location

REDROCK

STEP 4

Attach the Support Bracket to the Mounting Bracket with (1) **10mm x 30mm Hex Bolt**, (2) **10mm x 20mm Flat Washers** and (1) **10mm Nylon Lock Nut**, (Fig 7). Do not tighten hardware.

FIG 7



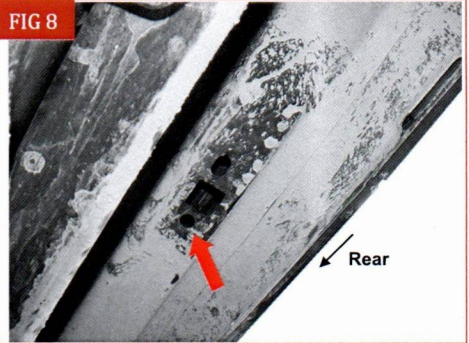
10mm x 30mm Hex Bolt
(2) 10mm x 20mm Flat Washers
10mm Nylon Lock Nut

(Fig 7) Attach (1) Passenger/Right Support Bracket (#2) to the Front Mounting Bracket

STEP 5

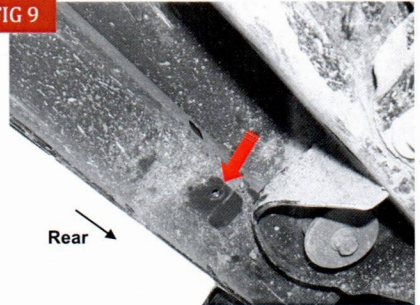
Repeat **Steps 2 - 4** to attach the Passenger/Right Center and Rear Mounting Brackets and Support Brackets to the center and rear locations, (Figs 8-9). **NOTE:** There is a small notch at the **Bottom** of the Center Brackets and the notch of Rear Brackets is at the **Top**. Do not tighten hardware.

FIG 8



(Fig 8) Passenger/Right center mounting location (Model with open mounting location shown)

FIG 9



(Fig 9) Passenger/Right rear mounting location (Model with threaded inset shown)

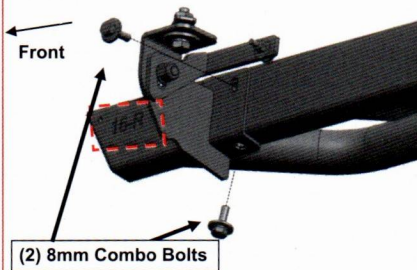
REDROCK

STEP 6

Select the Passenger/Right Running Board.

NOTE: The Passenger/Right Running Board will have a "16-R" on the front. Attach the Running Board to the Mounting Brackets with (6) 8mm Combo Bolts, (Fig 10). **IMPORTANT:** Do not slide Running Board on the Mounting Bracket cradles, or damage to the finish may result. Do not tighten hardware.

FIG 10



(Fig 11) Attach the Passenger/Right Running Board to the Mounting Brackets

STEP 7

Level and adjust the Running Board and tighten all hardware.

STEP 8

Repeat **Steps 1—7** to attach Driver/Left Running Board.

STEP 9

Do periodic inspections to the installation to make sure that all hardware is secure and tight.

Attention

To protect your investment, do not use any type of polish or wax that may contain abrasives that could damage the finish.

Mild soap may be used also to clean the Running Boards.