



# CONTROL ARM RELOCATION BRACKETS

(2007-2018 WRANGLER JK)

---

## INSTALLATION INSTRUCTIONS

### CONTENTS

---

- (1) LH Inner Bracket
- (1) RH Inner Bracket
- (1) LH Outer Bracket
- (1) RH Outer Bracket
- (2) M14x1.50 x 110mm Hex Bolts
- (4) M14 Flat Washers
- (2) M14 Hex Nuts
- (2) M12x1.75 x 80mm Hex Bolts
- (4) M12 Flat Washers
- (2) M12 Hex Nuts
- (4) M10x1.50 x 25mm Carriage Bolts
- (4) M10x1.50 Locking Nuts
- (2) M14 x 62mm Spacer Sleeves
- (2) M12 x 47mm Spacer Sleeves

### TOOLS REQUIRED

---

- 17, 18, 21mm Socket/Wrench
- Ratchet / Breaker Bar / Impact
- Pry Bar
- Adjustable Wrench
- Tape Measure

SKU # J261967

**STEP 1**



Lay out and identify the mounting brackets using the diagram above.

**STEP 2**



Ensure the vehicle is in park with the parking brake engaged. Only work on one side of the vehicle at a time.

From under the vehicle, locate the upper and lower control arm frame mounts on one side of the vehicle.



**STEP 3**

Upper Control Arm: Remove (1) 18mm bolt. The nut plate will be reused.

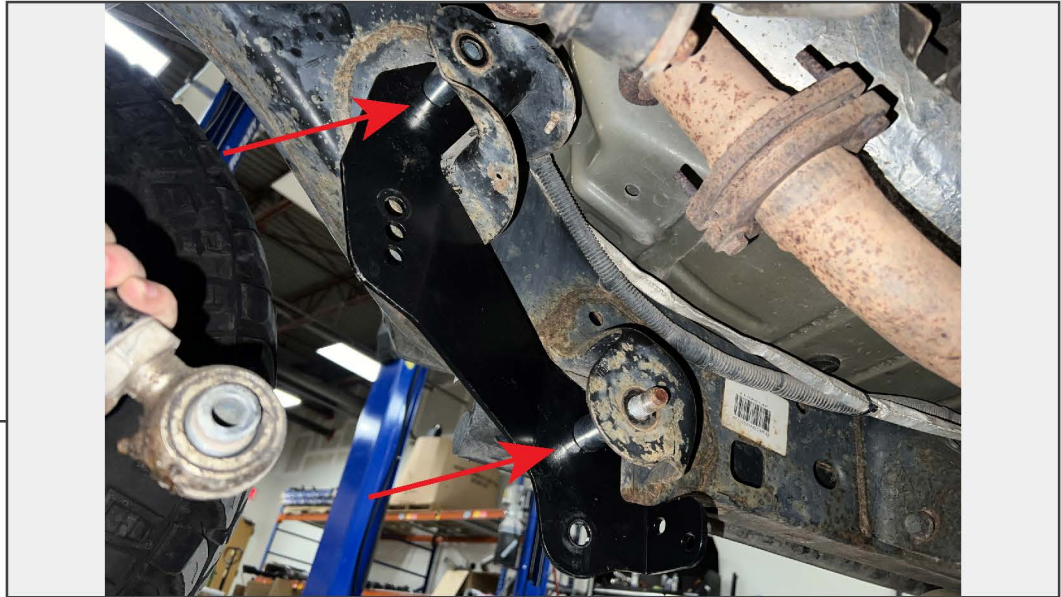
Lower Control Arm: Remove (1) 21mm bolt & nut.

Using a pry bar, remove the control arms from the frame mounts. It is recommended to loosen the control arm mounts on the front axle to allow control arm movement.



**STEP 4**

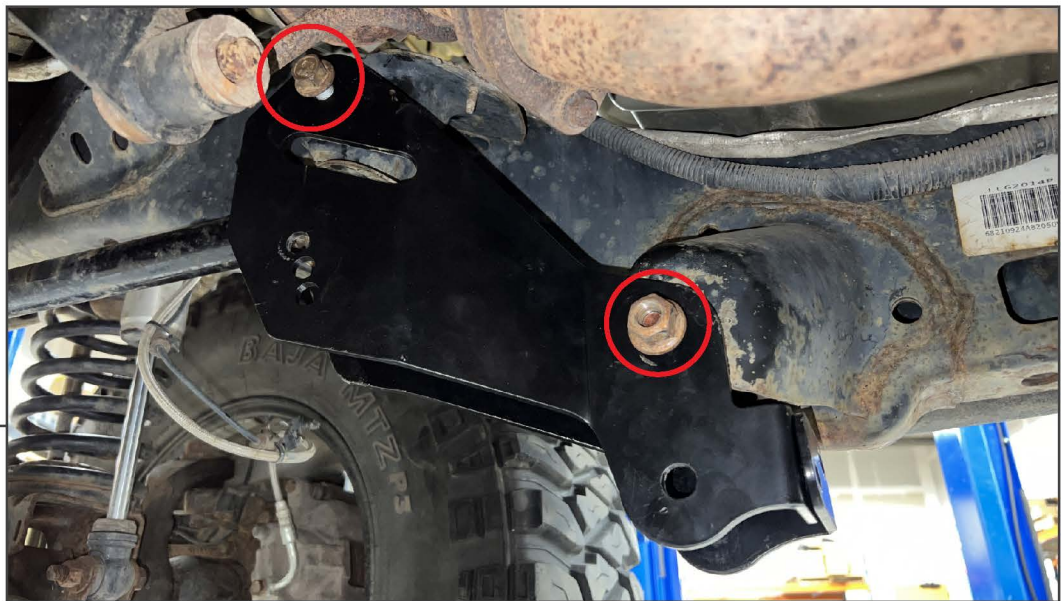
Using a pry tool/adjustable wrench, bend the frame control arm mounting ears outwards to allow for additional working space to later fit the relocation bracket & bolt spacer sleeves. This step may not be required in all applications.



**STEP 5**

Fit the outer bracket against the frame within the control arm mounts. Then, fit (1) M12 bolt sleeve into the vehicle frame upper control arm mount, and (1) M14 bolt sleeve into the vehicle frame lower control arm mount.

Note: The bolt sleeves are a tight fit by design to ensure proper clamping force without deforming the frame mounts. Prying/tapping into place may be necessary.



**STEP 6**

Fit the inner bracket to the outer bracket. Ensure the rear of the inner bracket is in front of the outer bracket. The bracket cutout will fit around the flared portion of the upper control arm mount.

Loosely secure the brackets together using the OEM control arm mounting hardware.

**STEP 7**



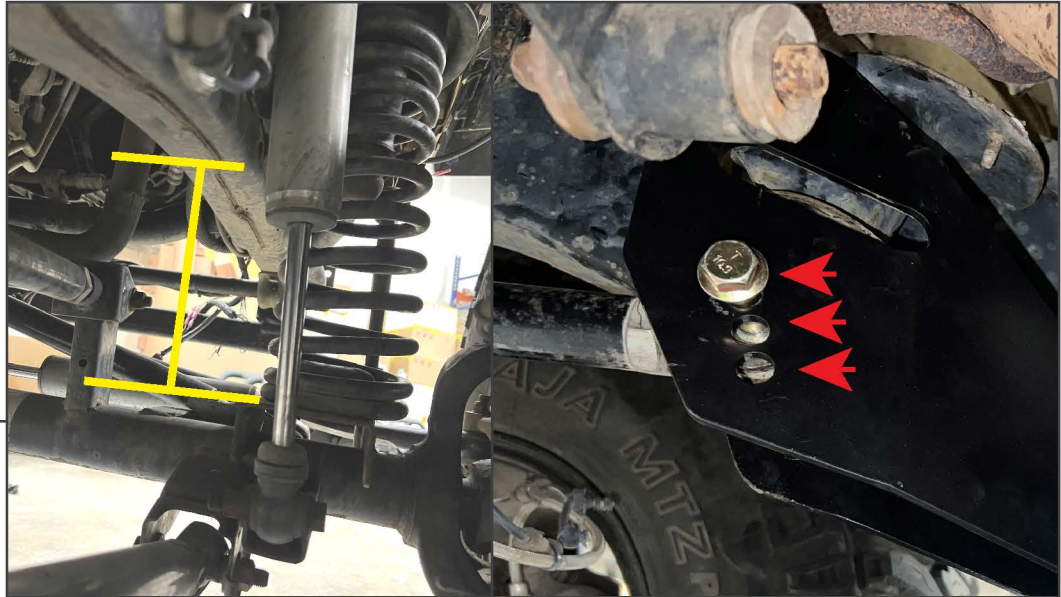
Fit the (2) M10 carriage bolts through the brackets, ensuring the studs point to the rear of the vehicle and the bolt's square neck is seated in the bracket.

**STEP 8**



Fit the lower control arm into the lower mount using the included (1) M14 x 110mm bolt, (2) M14 flat washers, and (1) M14 nut.

Pushing the vehicle axle rear-ward to align the bolt to the brackets may be necessary.



**STEP 9**

Measure from the bottom of the frame rail to the top of the spring mount on the axle, use the diagram below to determine upper control arm bolt hole selection.

**5.5" - 6.5": Top Bolt Hole**

**6.5" - 8.0": Middle Hole**

**8.0" - 9.0": Bottom Hole**

Tighten all hardware using the specifications below.

Upper Control Arm: 75 ft. lbs.

Lower Control Arm: 117 ft. lbs.

M10 Carriage Bolts: 37 ft. lbs.

Repeat Steps 1-9 for the opposite side of the vehicle.

Installation is now complete.