

MAXIMUS-3



JK/10A/X & HARD ROCK RUBICON

RECOVERY/TOW LOOPS

SKU# JK1006TL / JK1005TL

INSTALLATION GUIDE

PLEASE MAKE SURE YOU READ AND UNDERSTAND THE ENTIRE INSTALLATION GUIDE BEFORE YOU START. WE EXPECT YOU TO HAVE BASIC MECHANICAL ABILITIES TO PERFORM THIS INSTALLATION.

WE RECOMMEND THAT YOU SEPARATE AND IDENTIFY ALL THE PARTS AND HARDWARE KITS YOU RECEIVED WITH YOUR SHIPMENT BEFORE YOU PROCEED TO DISASSEMBLE YOUR JEEP.

WARNING

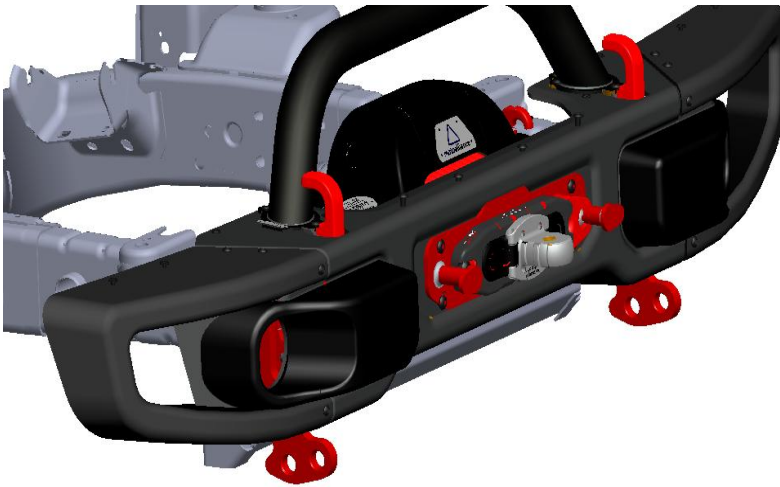
Please read before you proceed to install

Please read all instructions before installing your tow bar, recovery loops, adapters, tie rod & pins. Failure to install properly can result in non-warranty damage, property damage, personal injury or death. When flat towing always make sure you regularly check your equipment & pins to ensure all products are secure. Maximus-3 is not responsible for any damage caused from improperly installed products, property damage, personal injury or death.

The Maximus-3 Towing Tie Rod is mandatory for anyone who flat tows a Jeep with Maximus-3 Tow Loops. This is the safest way to tow your Jeep to avoid premature failure of the product and damage to your Jeep in the event of towing brake system (surge brakes system) malfunction or failure. The Maximus-3 Towing Tie Rod will triangulate your tow bar at the adapter connections to keep your towing load forces straight into the setup and preventing any side loads. If you tow without the Towing Tie Rod and your towing brake system fails or is out of settings (delayed braking response), your Jeep will ram into the tow bar arms (open V-shape) causing the arms to repeatedly push the Tow Loop tabs outwards which can cause damage to both the Tow Loops and the vehicle frame. Follow these instructions precisely. Maximus-3 is not liable for any damage caused by improperly installed products. It is the purchaser's responsibility to ensure both the installation and maintenance is performed properly as set forth in this guide. We recommend using anti-size paste on all non-thread lock bolts.

Parts List:**Qty**

Tow Loops LHS & RHS Set	1
M12 Hex Bolts - Zinc	4
M12 Flag Nut	2
M12 Serrated Flanged Nut	2
12 mm Flat Washers - Zinc	4

**Tools Required:**

- ✓ Metric Wrenches/spanners and Sockets
- ✓ Driller and Drill Bits
- ✓ Hole-Saw for metal, Diameter 1.25 Inch
(available from hardware stores: Home depot, Lowes or ACE)
- ✓ Cut-off Wheel (Grinder)
- ✓ Half-round Hand File

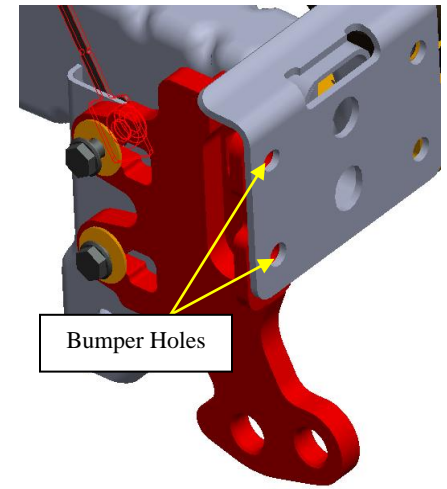
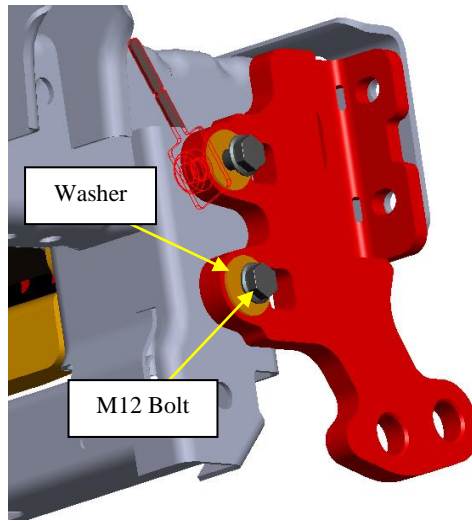
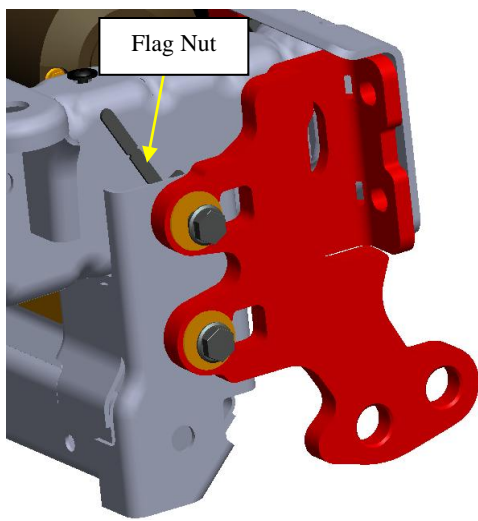
INSTALLATION STEPS

(1)- REMOVE THE SKID PLATE OR THE AIR DAM IF ANY:**(2)- REMOVE THE FRONT BUMPER:**

- a. Reach under the bumper and disconnect the fog lights wire connectors, both RHS & LHS.
- b. Using 18 MM drive socket, short extension and ratchet remove the 8 bumper flanged nuts – 4 nuts from each side.
- c. Carefully slide the bumper assembly out and place on a protective surface.

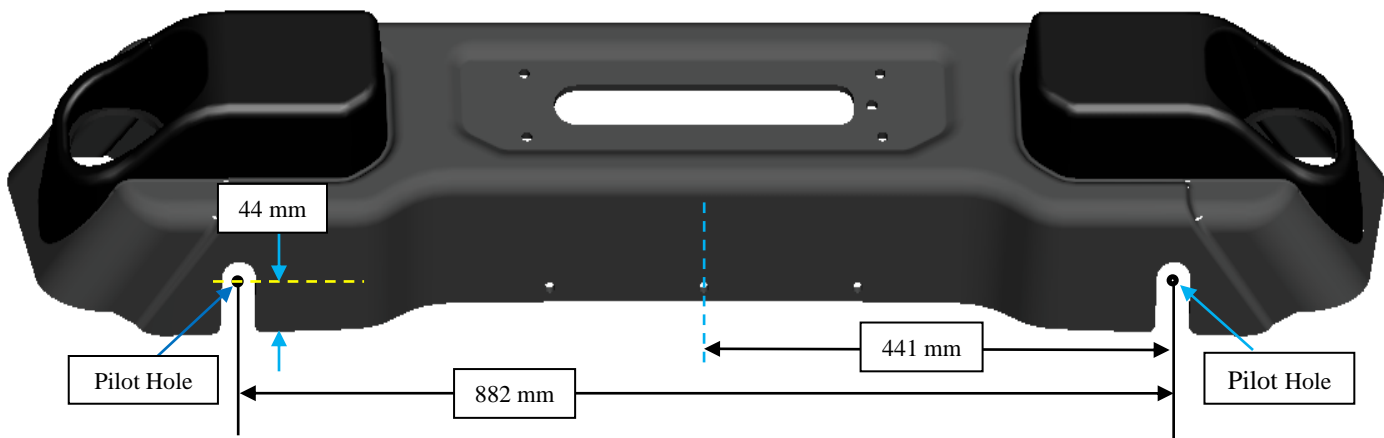
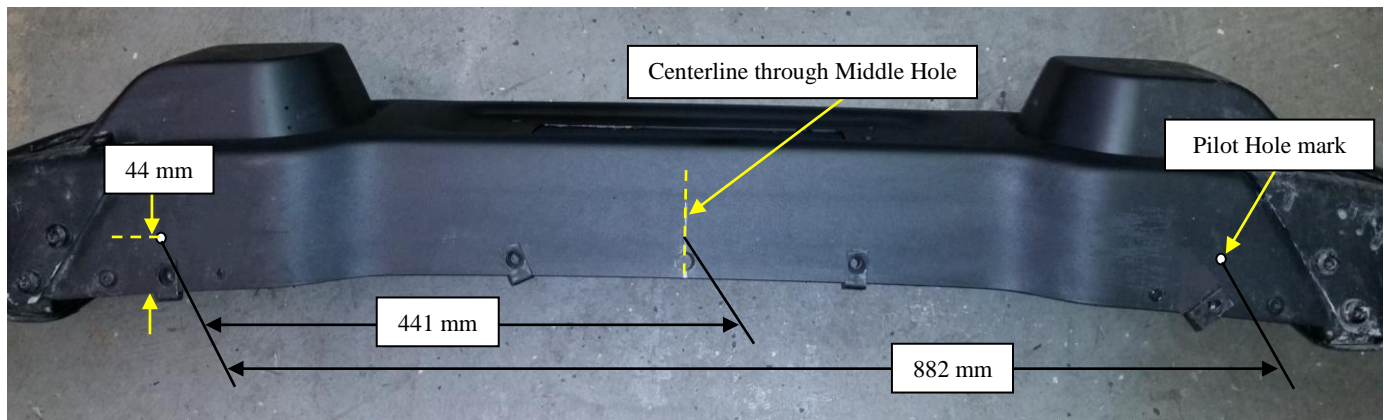
(3)- INSTALL THE TOW LOOPS:

- a. Place your Tow Loop over mounting holes in the chassis frame and align to bumper mounting points as shown.
- b. Now secure the back end using M12 hex bolts, washers, flag nut (top) and flanged nuts (bottom). Make sure front holes are lining up with corresponding bumper mounting holes. Repeat the same on the other side and tighten all bolts.

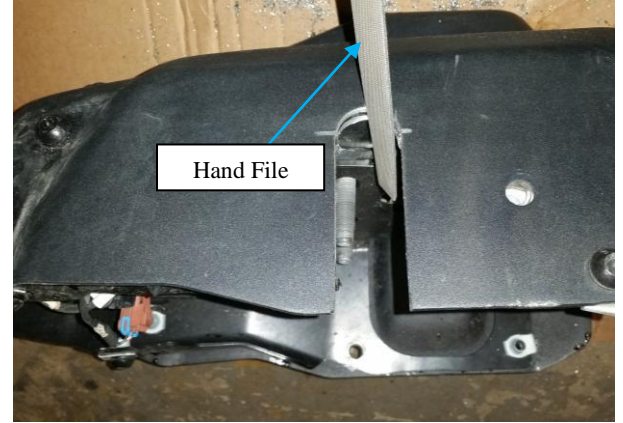
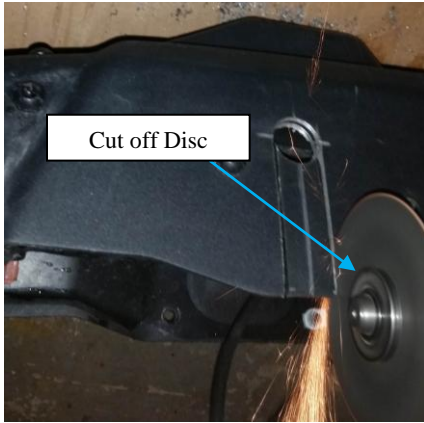
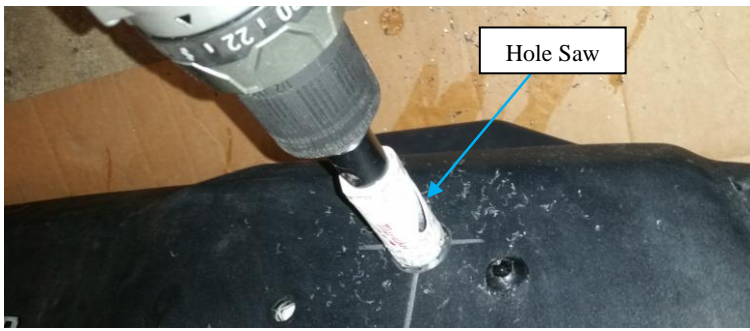


(4)- Cut Clearance Slots in the Bottom of the Bumper

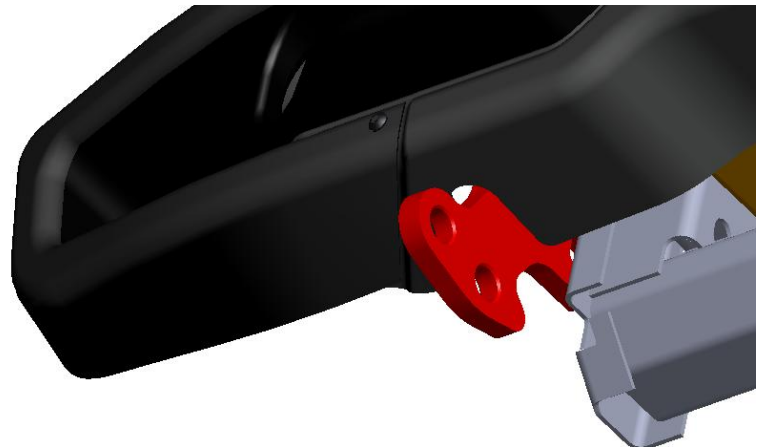
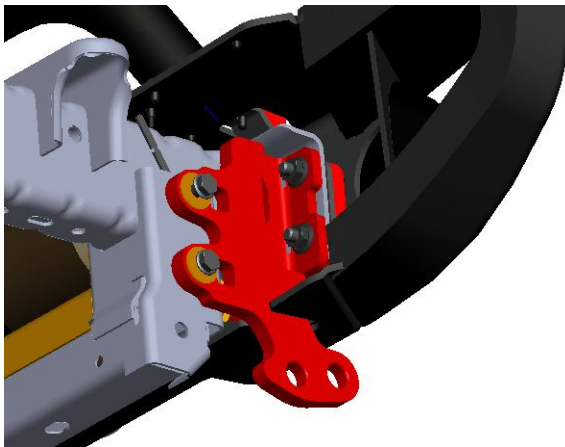
- Mark the center line on the bottom side of the bumper (through the middle hole).
- Mark a line **441 MM** from the center line on each side (**882 MM** overall left to right).
- Mark a drill point on the line **44 MM** (1.75") from the edge of the bumper as shown below.
- Using a small drill bit drill a pilot hole.
- Using a 1.25" hole-saw drill out a radius hole.
- Mark lines tangent to the holes you drilled out.
- Using a cut off wheel/grinder cut along the lines you marked to the tangents of the radius holes you drilled in the previous step to create a slot
- De-burr your cut edges using a hand file and touch up with a protective paint to prevent rusting.



EXAMPLE OF HOW TO CUT CLEARANCE SLOTS. PICTURES MAY NOT LOOK LIKE YOUR BUMPER.

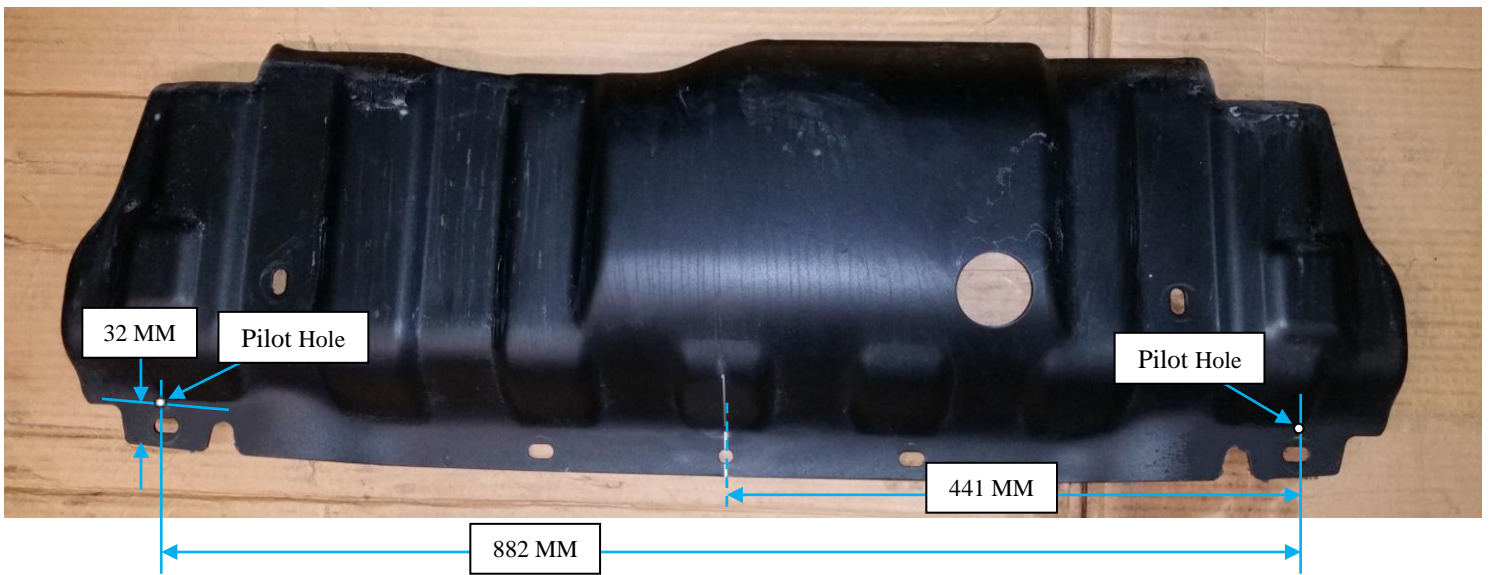


- i. Reassemble the bumper: Lift the bumper and carefully slide over the Tow Loops mounting holes in the chassis rails.
- j. Thread on all 8 bumper nuts and tighten



(5)- CUT CLEARANCE SLOTS IN THE SKID PLATE:

- a. Mark the center line on the lip of the skid plate (through the middle hole).
- b. Mark a line **441 MM** from the center line on each side.
- c. Mark a drill point on the line **32 MM (1.25")** from the edge of the skid plate as shown below.
- d. Using a small drill bit drill a pilot hole.
- e. Using a **1.25"** hole-saw drill out a radius hole.
- f. Mark lines tangent to the holes you drilled out.
- g. Using a cut off wheel/grinder cut along the lines you marked to the tangents of the radius holes you drilled in the previous step to create a slot.
- h. De-burr your cut edges with a hand file and touch up with a protective paint to prevent rusting.



(6)- RE-ASSEMBLE THE SKID PLATE

- a. Re-assemble the skid plate using factory hardware. Make sure the Tow Loops clear well through the slot.

Your installation is complete. If you have questions regarding this installation, please contact us at customerservice@maximus-3.com or call (248) 821-6654.