

STEP 17
(OPTION 3:
FOG LIGHT)

Wiring Option 3 - Fog Light: Route the backlight wiring harness towards the fog light wiring, and cut the wiring harness to a workable length. Using the (2) scotchlok connectors, splice into the vehicle fog light wiring harness following the diagram below. The Jeep logo backlight will now function with the vehicle fog lights.

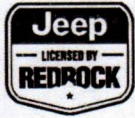
<u>Vehicle Fog Light Wiring</u>	-	<u>Backlight Harness</u>
White/Orange (+)	-	Red (+)
Black (-)	-	Black (-)



STEP 18

Ensure all bumper hardware is fully tightened, and the wiring harnesses are neatly routed away from any moving/hot components. Install the (2) 3/4" D-Rings into the bumper mounting points.

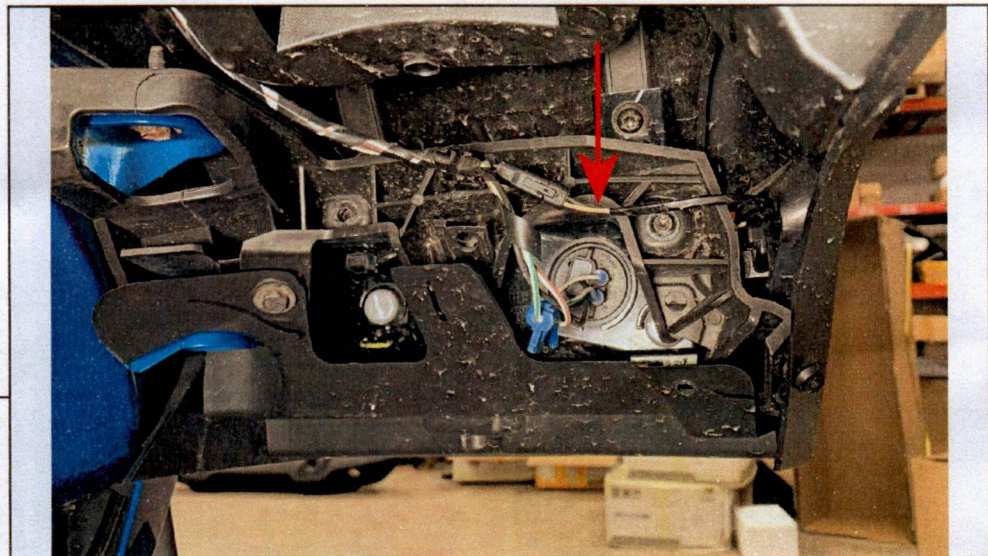
Installation is now complete.



**STEP 15
(OPTION 1:
AUX SWITCH)**

Wiring Option 1 - Standalone Harness (cont.): Clean the desired switch mounting location using isopropyl alcohol and a microfiber cloth. Peel the double sided tape backing on the switch, and firmly press the switch to the vehicle to adhere into place.

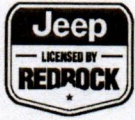
Connect the terminal ends of the harness to the vehicle battery (Red = 12V+ , Black = Chassis Ground). Secure all wiring harness away from any moving/hot components using cable ties.



**STEP 16
(OPTION 2:
PARKING LIGHT)**

Wiring Option 2 - Parking Light: Route the backlight wiring harness towards the vehicle fender lighting, then cut the wiring harness to a workable length. Then, splice into the parking light harness using the diagram below. The Jeep logo backlight will now function with the vehicle parking lights.

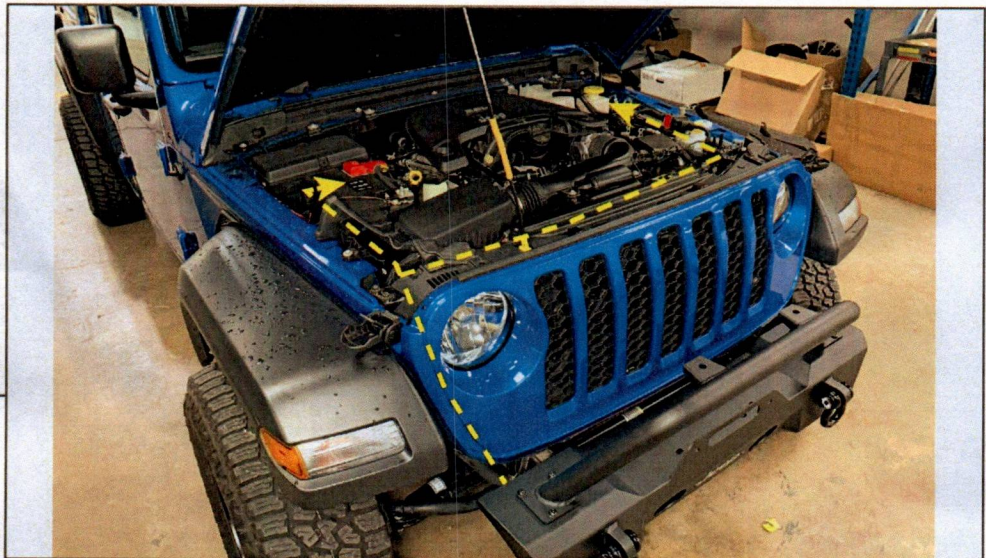
<u>Vehicle Parking Light Wiring</u>	-	<u>Backlight Harness</u>
White/Orange(+)	-	Red (+)
Black (-)	-	Black (-)



STEP 13

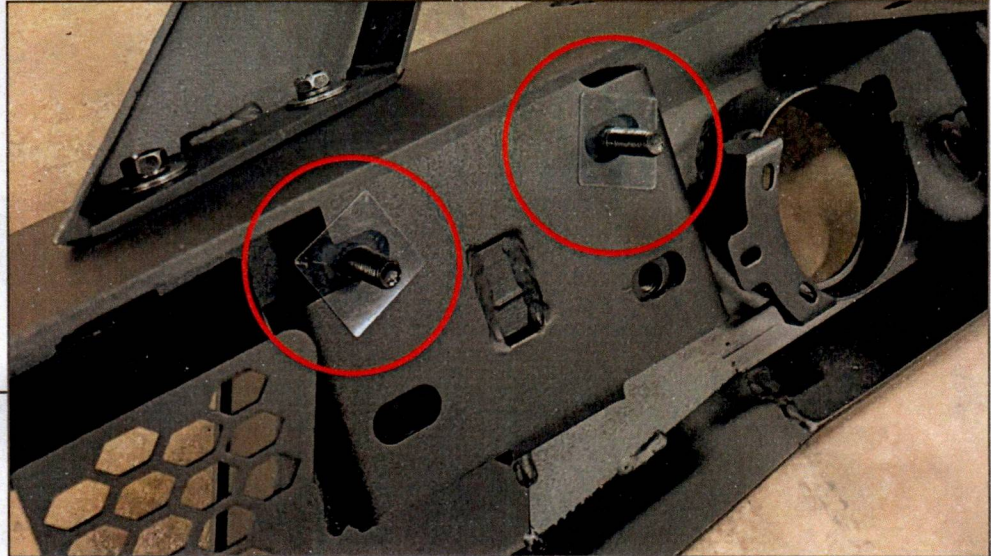
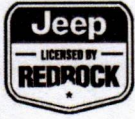
Neatly route the fog light wiring harness away from any moving/hot components, then plug the harness into the vehicle wiring harness connector.

Plug the included wiring harness into the Jeep logo backlight. See the following steps for wiring options.



STEP 14 (OPTION 1: AUX SWITCH)

Wiring Option 1 - Standalone Harness: Route the terminal ends of the wiring harness neatly towards the vehicle battery. The terminals will connect to the battery. Route the switch harness across the vehicle firewall towards the LH side of the vehicle. From the interior, feed the switch connector through a suitable firewall grommet. Plug the switch into the wiring harness.



STEP 11

Fit the (4) M12 stud plates into the bumper mounting pad, and hold into place using the (4) M12 plastic stud holders. This will allow the studs to remain in place while mounting the bumper.

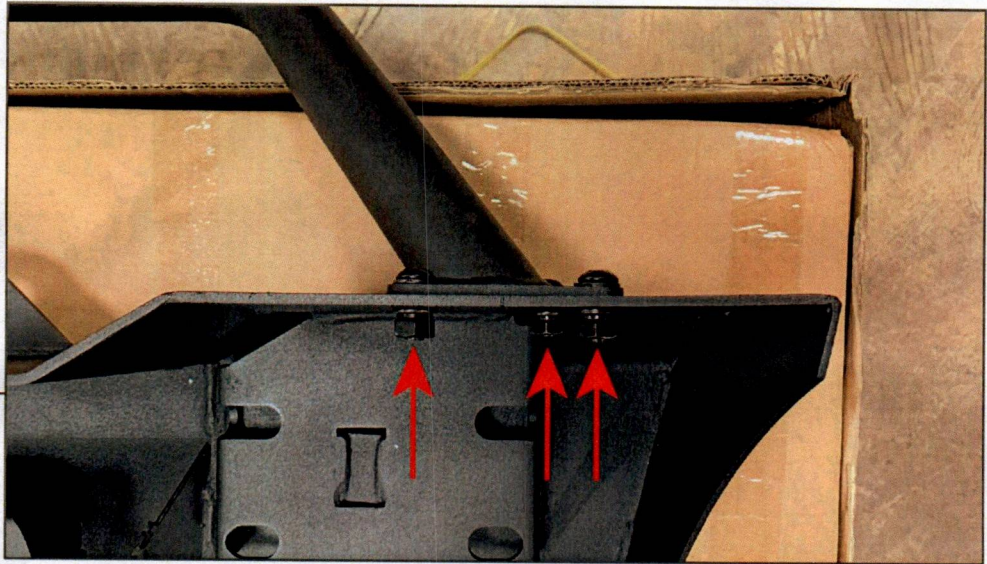


STEP 12

Align the bumper to the vehicle, and secure into place using (4) M12 nuts, (4) M12 bolts, (8) M12 flat washers, and (4) M12 lock washers. Center the bumper to the vehicle, and tighten all hardware to secure the bumper into place.



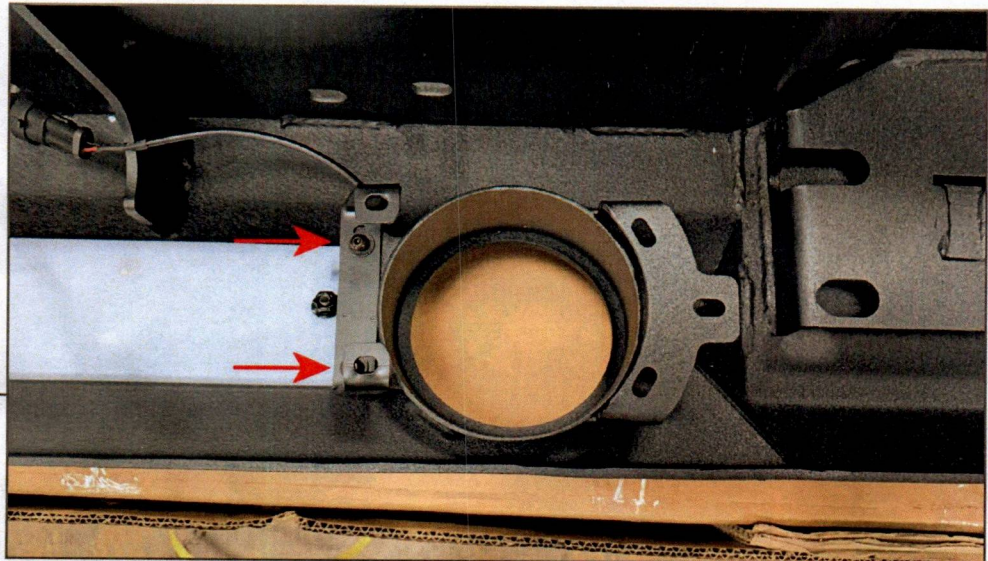
STEP 9



Place the new bumper on a workable surface. Install the (1) Over-Rider Bar to the bumper using (6) M10x1.50 x 35mm Hex bolts, (6) M10 lock washers, (12) M10 flat washers, and (6) M10 nuts. Tighten until secure.

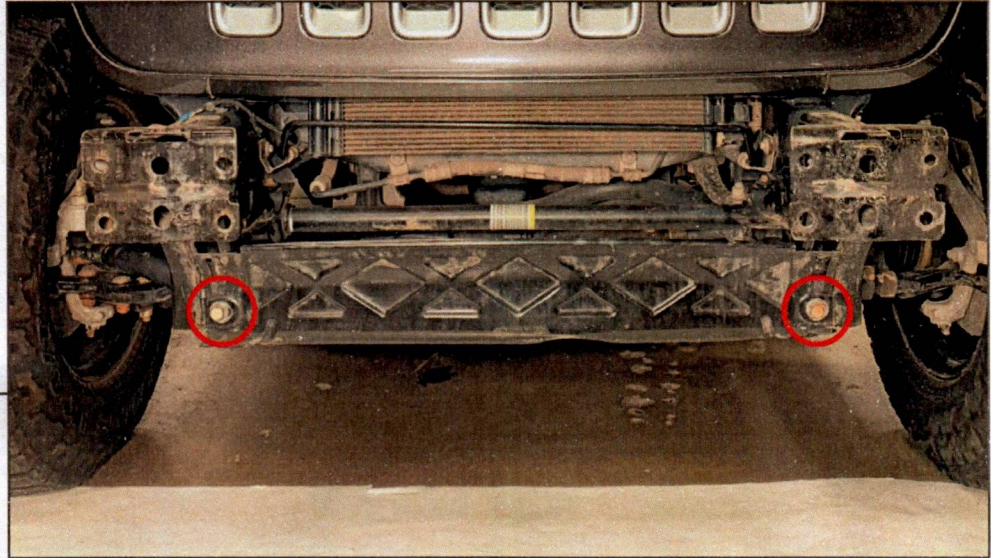
In place of the Over-Rider bar, the included block off plates can be installed to the bumper using (6) M10x1.50 x 25mm Allen bolts, (6) M10 lock washers, (12) M10 flat washers, and (6) M10 nuts.

STEP 10



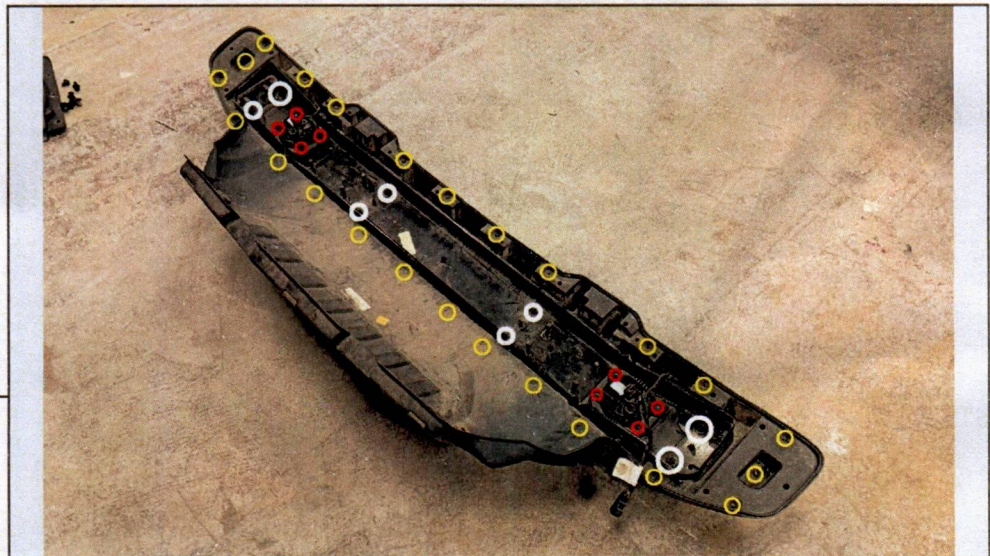
Secure the fog light mounting bracket to the bumper fog light mount using (2) M4x0.7 x 16mm bolts, (2) M4 lock washers, and (2) M4 flat washers. Secure the fog light to the new bumper using (4) M4x0.7 x 16mm Allen bolts, (4) M4 lock washers, (8) M4 flat washers, and (4) M4 nuts. Tighten until secure. Repeat this step for the remaining fog light.

Note: Some vehicle trim use (3) bolt fog lights, these fog lights do not require the fog light brackets and can be bolted directly to the bumper fog light mounts.



STEP 7

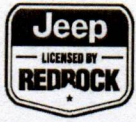
Optional: Remove (2) 16mm bolts from the lower metal shield, then lift upwards to unhook the shield from the vehicle.



STEP 8

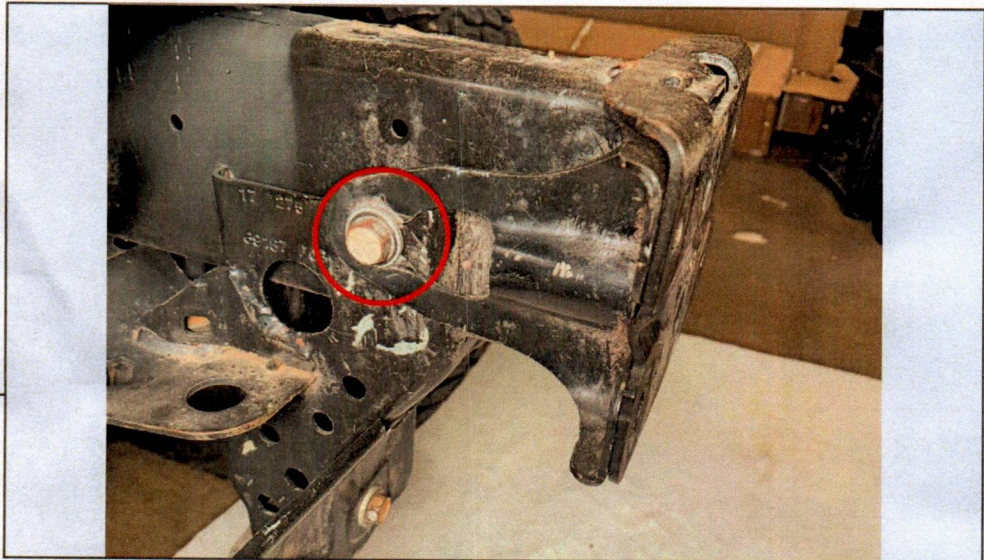
Unplug, then remove the fog lights from the vehicle by removing 3-4 screws. Screw quantity varies per vehicle trim level.

Around the perimeter of the bumper, remove (24) 7mm screws to separate the bumper inner trim. Separate the middle steel bumper brace by removing (8) 13mm nuts. Then, use a panel removal tool to dislodge the fog light wiring harness from the mounting position. The fog light harness will be reused during assembly.



STEP 5

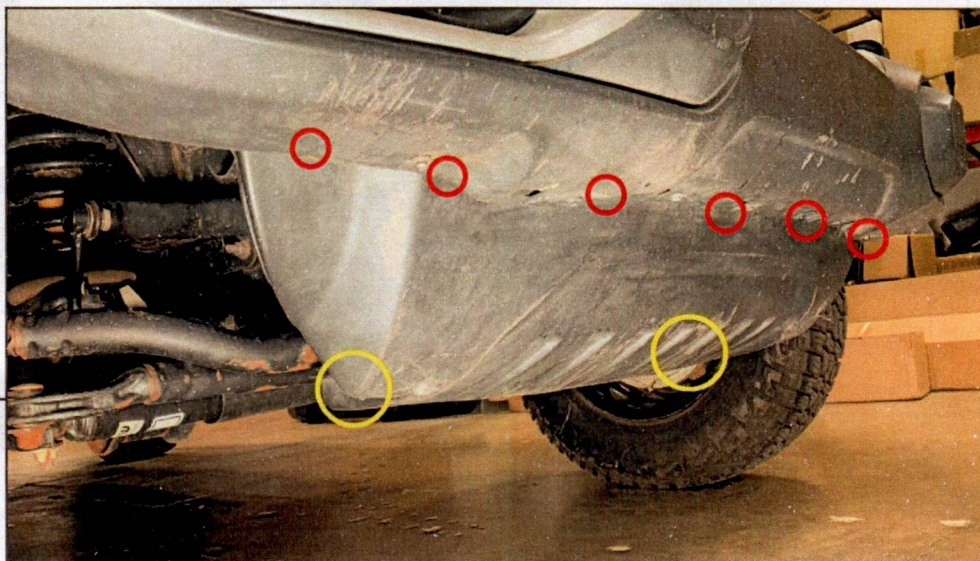
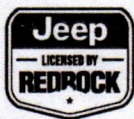
From behind the bumper, remove (8) 18mm nuts to release the bumper. Once all hardware is removed, pull the bumper away from the vehicle.



STEP 6

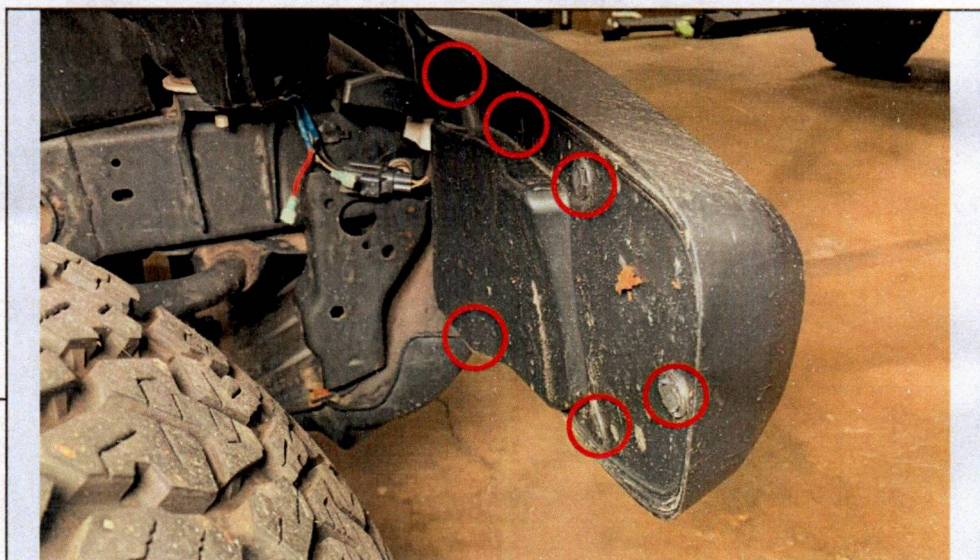
Optional: Remove the frame rail bracket from each side of the frame rail by removing (1) 16mm bolt per bracket.

Repeat this procedure for the opposite side frame rail brackets.



STEP 3

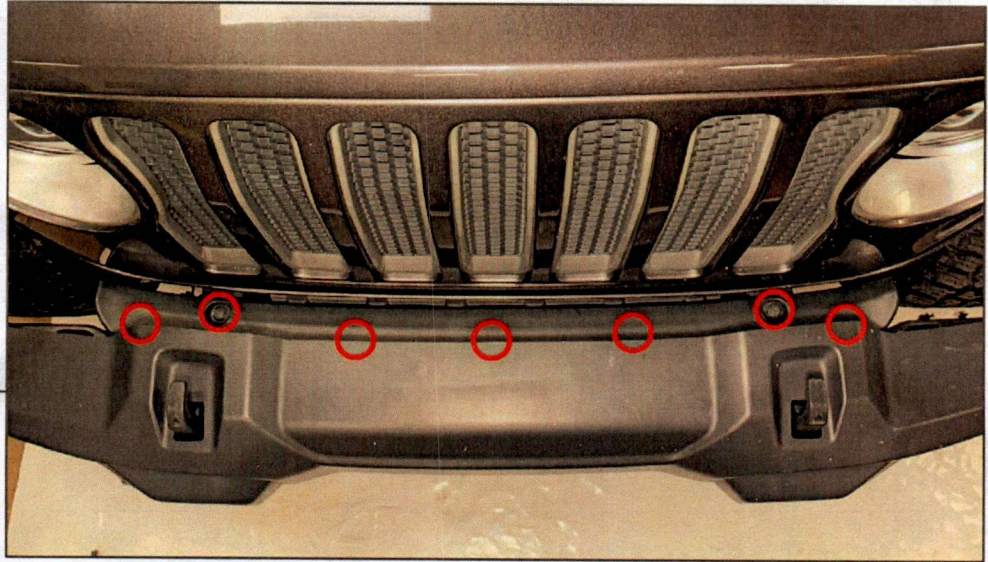
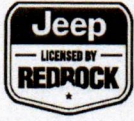
From under the vehicle, remove (7) plastic push clips from the splash shield. Remove (2) 8mm bolts from the rear of the splash shield. Remove the splash shield and the end cap covers from the vehicle.



STEP 4

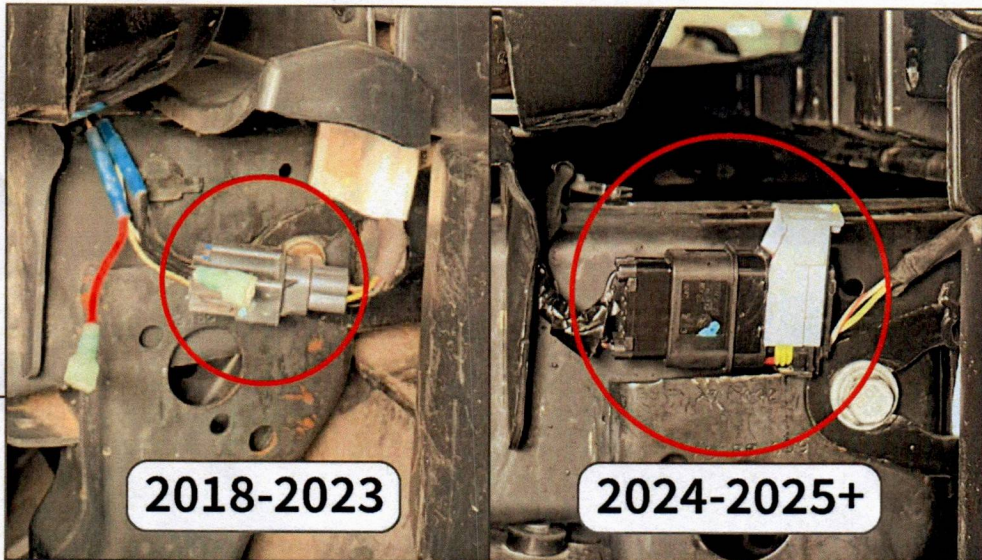
Remove (6) plastic push clips from the bumper end cap cover. Repeat this procedure to the opposite side of the vehicle.

Note: Depending on vehicle trim level, end cap cover may be secured with 7mm screws.



STEP 1

Remove (7) plastic push clips from the upper bumper cover.



STEP 2

Locate the fog light wiring harness connector along the passenger side frame rail.

2018-2023 Year Vehicle: Slide the red lock back, and press the connector tab to unplug the connector.

2024-2025+ Year Vehicle: Slide the yellow lock back, and slide the gray connector latch upwards.

Removing the connector from the frame retainer may be necessary for additional working room.



HD STUBBY FRONT BUMPER WITH JEEP LOGO BACKLIGHT

(2018-2025+ WRANGLER JL)

(2020-2025+ GLADIATOR JT)

INSTALLATION INSTRUCTIONS

CONTENTS

- (1) HD Front Bumper
- (1) Over-Rider Bar
- (2) Over-Rider Bar Block Off Plates
- (1) Wiring Harness
- (2) Scotchlok Connectors
- (2) 3/4" D-Rings
- (2) 3/4" D-Ring Isolators
- (2) Fog Light Brackets
- (2) Foam Pads
- (5) Cable Ties
- (4) M12 Stud Plates
- (4) M12 Plastic Stud Retainers
- (4) M12x1.75 x 35mm Bolts
- (4) M12 Nuts
- (8) M12 Lock Washers
- (8) M12 Flat Washers
- (6) M10x1.50 x 35mm Hex Bolts
- (6) M10x1.50 x 25mm Allen Bolts
- (6) M10 Lock Washers
- (12) M10 Flat Washers
- (6) M10 Nuts
- (12) M4x0.7 x 15mm Allen Bolts
- (12) M4 Lock Washers
- (20) M4 Flat Washers
- (8) M4 Nuts
- (1) 6mm Allen Key
- (1) 2.5mm Allen Key

TOOLS REQUIRED

- 7mm, 8mm, 16mm, 18mm Sockets/
Wrenches
- Ratchet
- Panel Removal Tool
- 2.5mm Allen Key (Provided)

SKU # J257947 / JG22825/J164980

Edited: 06/06/2025