

INSTALLATION

INSTALLATION 1987-2006

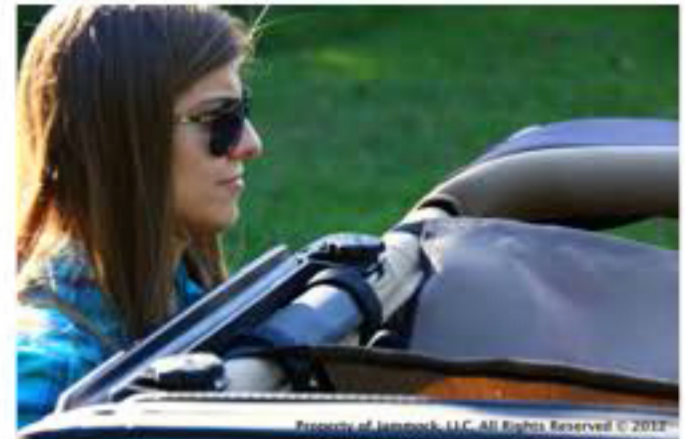
Prior to installation, please remove your soft-top or hardtop. If you've got a Freedom Top, we recommend removing the two front panels and loosening the TORX nut on the large part of the top on the driver's side door, so you can slide the buckle through the gap. If you have a soft-top, loosen the driver's side drip rail retainer or back part of Freedom Top so you can eventually slide the buckle through. **FOR ALL JEEPS: Make sure that you have mated the webbing correctly with the buckles. The webbing should not be able to move freely from the buckle unless you press the release lever**



1.) Unfold the Jammock.



2.) 1987-2006: Slide webbing around the driver's side roll bar



3.) Slide the ends of the webbing around the roll bar where it meets the sound bar



4.) Insert the webbing into the buckles and tighten. **Pull on the webbing to make sure it cannot slide out unless you release the buckle.**



5.) Tie off the ends.



6.) Your Jammock should be taut and secure, check that it is prior to use.

INSTALLATION 2007+

It is same as for older models with one exception. The rear strap goes behind the "B" pillars, see the yellow lines below.

FOR ALL JEEPS: Make sure that you have mated the webbing correctly with the buckles. The webbing should not be able to move freely from the buckle unless you press the release lever.



Rely on premium soft tops & hard tops by Jammock if you're looking for quality and efficiency.