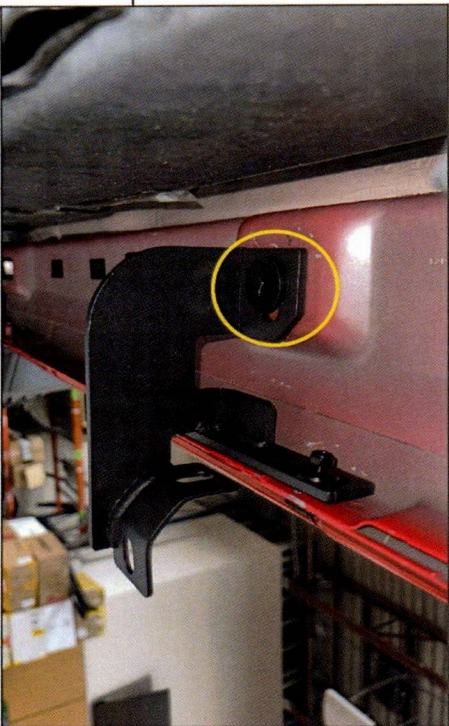


**STEP 1**

Locate the identification label on each mounting bracket.

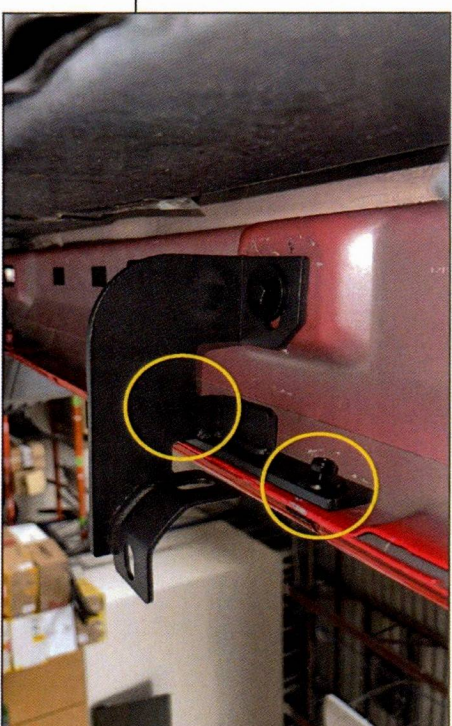
Loosely secure each mounting bracket to the appropriate location using (1) M8 x 35mm bolt, (1) M8 lock washer, and (1) M8 flat washer into the vehicle chassis.



**STEP 2**

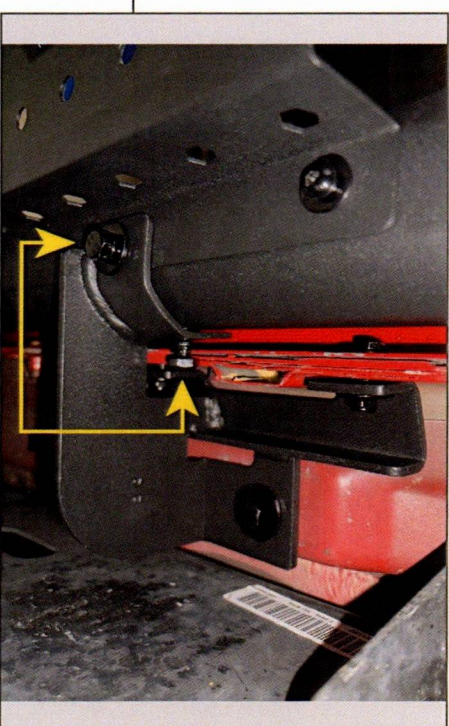
Align each appropriate mounting bracket to the vehicle body, and loosely secure the rear of each mounting bracket using (1) M8 x 35mm bolt, (1) M8 lock washer, and (1) M8 flat washer.

**Note:** On 2007-2010 model years, insert (1) M10 nut plate into the hole in the vehicle body. Then, loosely secure the mounting bracket to the body using (1) M10 x 35mm bolt, (1) M10 lock washer, and (1) M10 flat washer into the nut plate. M8 x 35mm bolts, lock washers, and flat washers will not be used in this application.



**STEP 3**

Loosely secure the front of each mounting bracket to the vehicle pinch weld using (2) M6 x 25mm bolts, (4) M6 flat washers, and (2) M6 lock nuts through the pre-drilled pinch weld holes.



**STEP 4**

Carefully place the running board onto the previously mounted brackets. Loosely secure the running board to the brackets using (6) M8 x 25mm combo bolts.



# OPEN TRAIL HD RUNNING BOARDS

(2007-2018 WRANGLER JK - 4 DOOR)

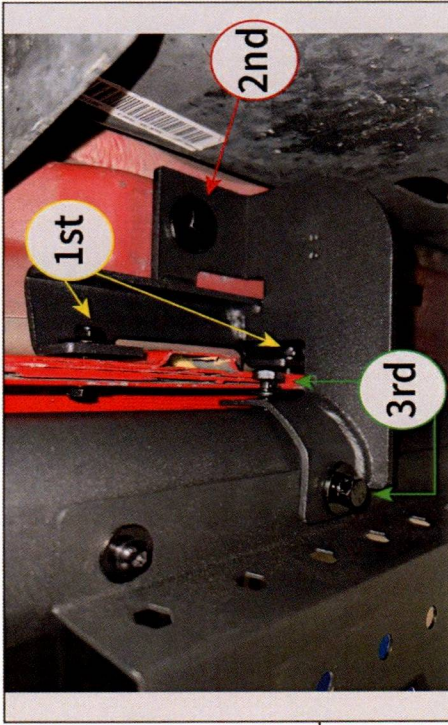
## INSTALLATION INSTRUCTIONS

### CONTENTS

- (1) LH Running Board
- (1) RH Running Board
- (1) LH Front Bracket [DF]
- (1) LH Center Bracket [DC]
- (1) LH Rear Bracket [DR]
- (1) RH Front Bracket [PF]
- (1) RH Center Bracket [PC]
- (1) RH Rear Bracket [PR]
- (6) M10x1.50 x 35mm Bolts
- (6) M10 Lock Washers
- (6) M10 Flat Washers
- (6) M10 Nut Plates
- (12) M8x1.25 x 25mm Combo Bolts
- (6) M8x1.25 x 35mm Bolts
- (6) M8 Lock Washers
- (6) M8 Flat Washers
- (12) M6x1.00 x 25mm Bolts
- (24) M6 Flat Washers
- (12) M6 Lock Nuts

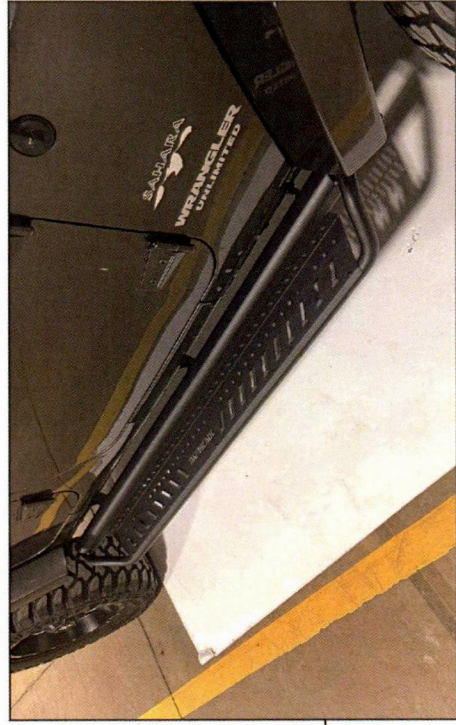
### TOOLS REQUIRED

- 10mm Wrench/Socket
- 13mm Wrench/Socket
- Ratchet



STEP 5

Adjust the running boards and bracket for the desired fit to the vehicle. Tighten all hardware following the diagram above.



STEP 6

Repeat steps 1-5 for the remaining running board.  
Installation is now complete.