



---

# ACCESS POWER RUNNING BOARDS

(2007-2018 WRANGLER JK)

---

## INSTALLATION INSTRUCTIONS

### CONTENTS

---

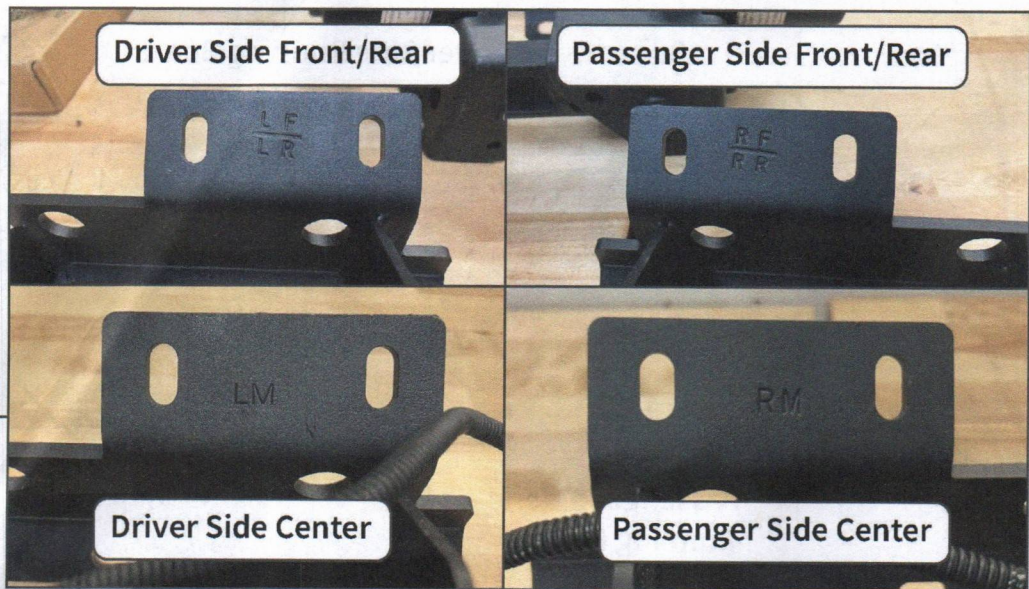
(1) LH Running Board	(1) Wire Harness Fishing Lead
(1) RH Running Board	(6) Wire Retainers w/ 6 Phillips Screws
(2) LH Front/Rear Mounting Brackets	(18) M8x1.25 x 25mm Flange Bolts
(1) LH Center Mounting Bracket w/ Motor	(18) M8x1.25 Flange Nuts
(2) RH Front/Rear Mounting Brackets	(18) M8 Lock Washers
(1) RH Center Mounting Bracket w/ Motor	(18) M8 Flat Washers
(1) Main Wiring Harness	(6) M8 Clip Nuts
(4) Door Switches w/ Magnets	(12) M6x1.00 x 25mm Allen Bolts
(1) LH Motor Harness Lead	(12) M6 Lock Washers
(1) RH Motor Harness Lead	(10) Mounting Shims
(1) Control Module w/ M6 Hardware	(20) Cable Ties

### TOOLS REQUIRED

---

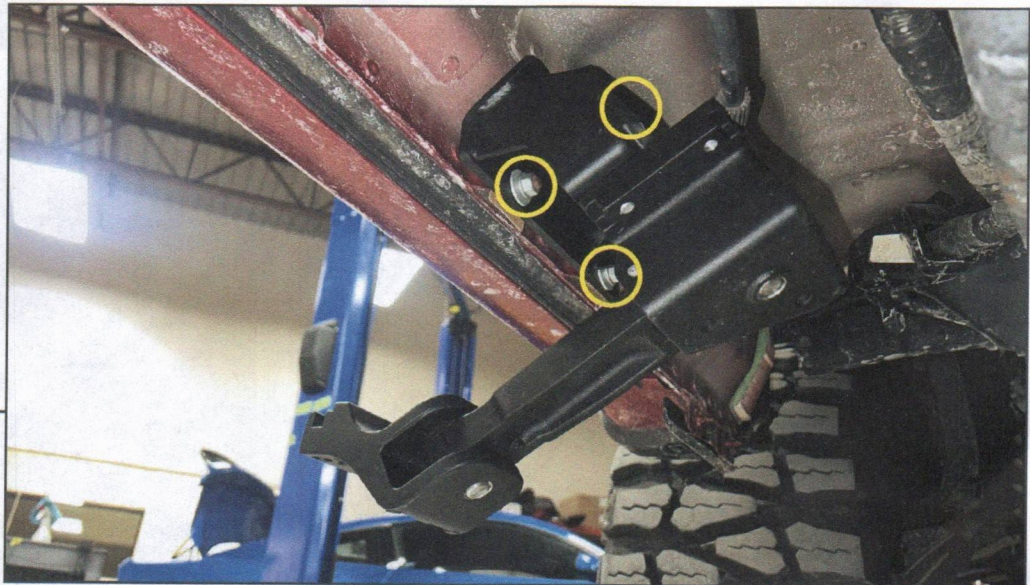
13mm Wrench/Socket  
6mm Allen Socket/Key  
Ratchet  
Phillips Screwdriver  
Plastic Pry Tool  
Electrical Tape  
Razor Knife

SKU # J245335 / J245337

**STEP 1**

Lay out and identify all components. Identify the LH/RH, as well as Front/Rear mounting brackets using the diagram above.

The bracket will bolt directly to the vehicle mounting points.

**STEP 2**

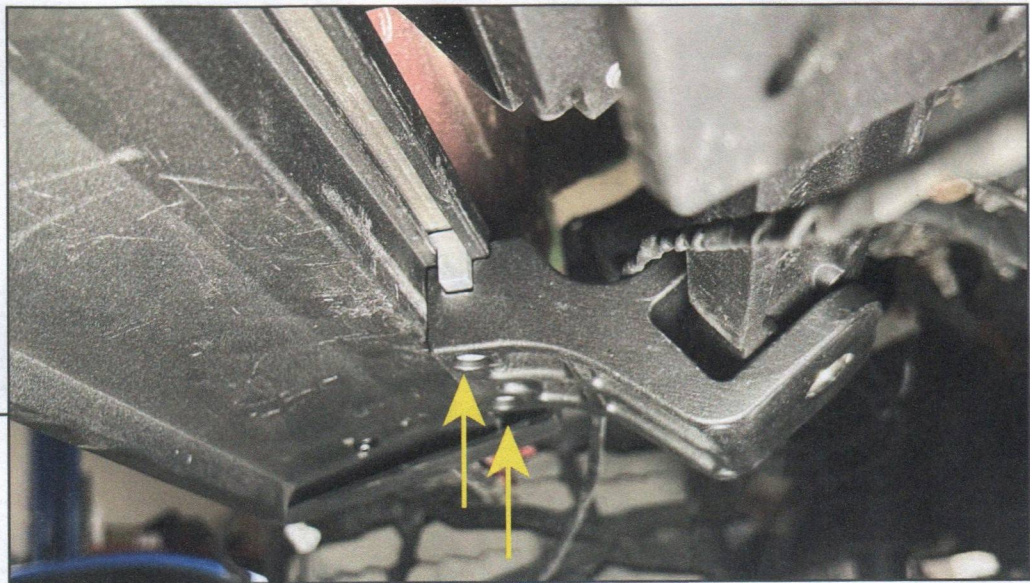
Using the included (3) M8 bolts and (3) M8 flat washers, loosely secure each mounting bracket to the vehicle (2) M8 pinch weld holes and (1) M8 threaded hole in the floor. Allow the brackets to remain loose to allow for adjustability later. Expanding the pinch weld holes with a drill & drill bit may be necessary. 2007-2010 JK Models will need to fit the included M8 clip nuts into the vehicle floor.

Note: Do not force the center mounting bracket to fold down. The running board will mount to the brackets in the folded up position.

**STEP 3**

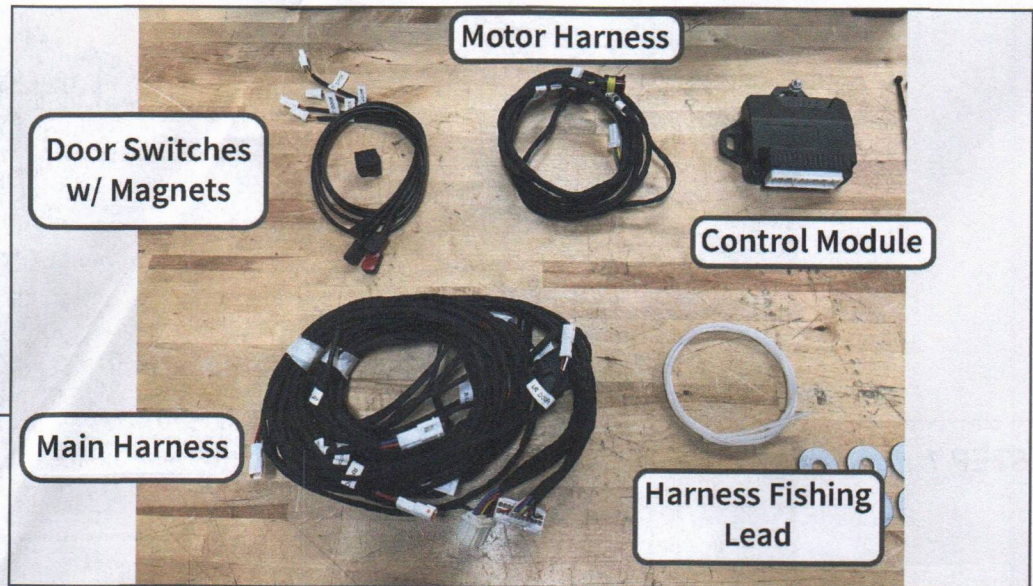
Lay out and identify the running boards. Each running board is side specific. The side of the running board with the wire leads will fit towards the front of the vehicle.

Remove the pre-installed (6) Allen bolts from the sliding mounting blocks.

**STEP 4**

With a helper, fit the running board to the mounting brackets. Align the sliding mounting blocks on the running board into the mounting bracket, and loosely secure using the previously removed (6) Allen bolts. The running board can be adjusted to best fit the vehicle. Adjust as necessary for best fit and tighten the Allen bolts. The running board LED wiring will be close to the center mounting bracket.

If necessary, the (10) M8 shims can be used between the body and the mounting brackets to space the running board mounting brackets away from the body to allow better fitment.

**STEP 5**

Lay out and identify the wiring components. Each connector of the harness is labeled for the specific mounting point on the vehicle.

When routing each wire lead, take your time to neatly route each wire lead. This is crucial to proper harness fitment.

**STEP 6**

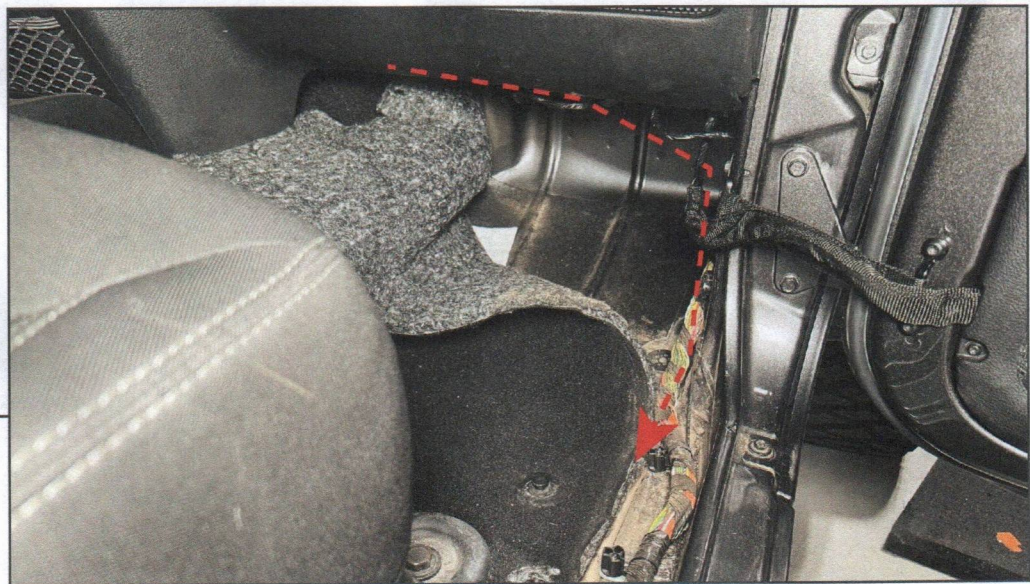
Use a panel trim tool to release the (3) plastic retainers securing the plastic trim panel to the vehicle body. Then, pull the front panel around the door limiting strap, and set the panel from the vehicle and set aside.

Repeat this step to the opposite side of the vehicle.

**STEP 7**

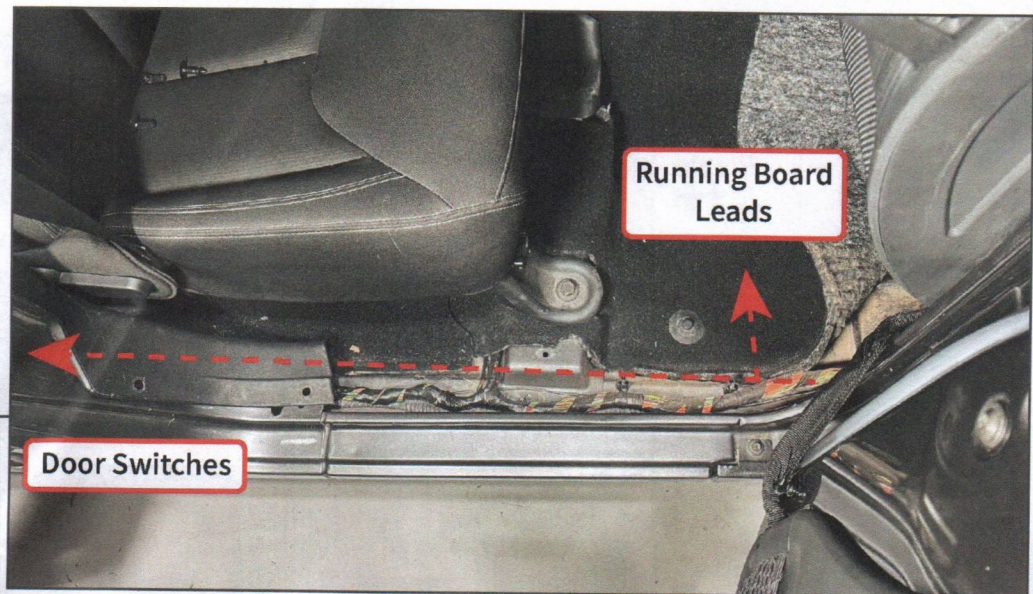
Lift the carpet to locate the floor drain grommets. Cut a "X" in the grommet to allow the running board harnesses to route to the exterior of the vehicle.

Repeat this step to the opposite side of the vehicle.

**STEP 8**

Begin with the main wiring harness on the driver side (LH) of the vehicle. Route the RH labeled wire leads along the vehicle floor under the carpet and behind the bottom of the dashboard.

For easiest routing method, push the included (1) harness fishing lead from the passenger side of the dashboard to the driver side of the dashboard. Once the fishing lead is accessible on the driver side, use electrical tape to secure the RH wire leads to the fishing lead, and then pull the fishing lead towards the passenger side to pull the wire leads.

**STEP 9**

Neatly route the wiring harnesses under the carpet from the front of the vehicle towards the B-Pillar.

-Route the door switch wire leads to the appropriate door along the B-Pillar. Both of the RH side magnet switches will secure to the B-Pillar.

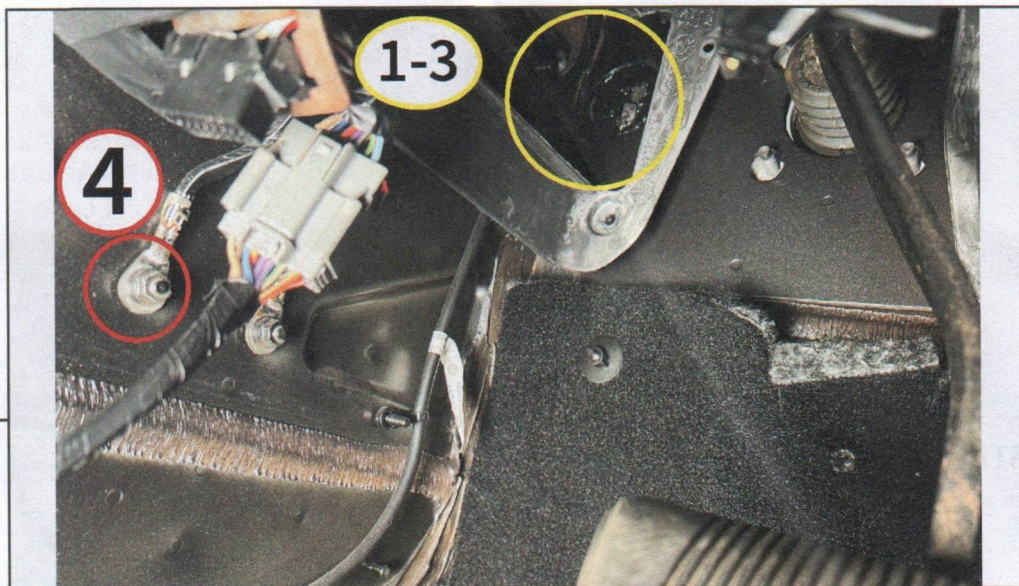
-Route the running board power leads through the floorboard grommet.

Repeat this step on the driver side of the vehicle once the passenger side is fully routed.

**STEP 10**

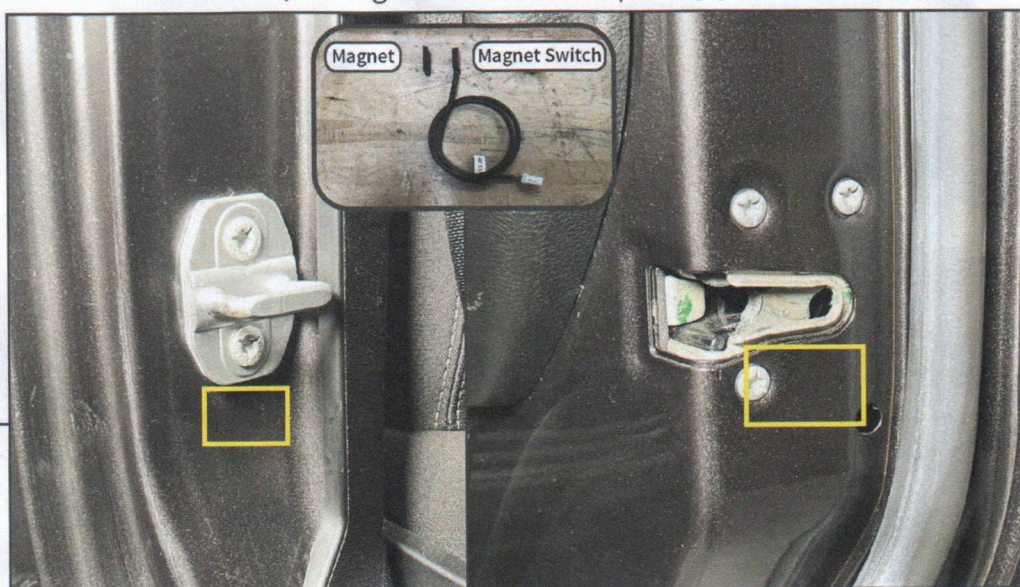
Remove (2) plastic push clips from the rear of the B-Pillar panel to allow panel flexibility for routing the wiring harnesses in the B-Pillar.

Route the rear door switch harness towards the rear door. Using the included fishing lead may aid wire routing. Ensure to avoid the seatbelt track.



**STEP 11**

- Under the dashboard, secure the module to the vehicle dashboard brace using the module pre-installed M6 flange nut [1].
- Cut a small slit in the firewall grommet to prepare for the 12V+ wire lead routing to the battery [2].
- Route the 12V+ lead through the previously cut firewall grommet. Then, plug in the fused section of the lead, and route the lead to the battery [3].
- Route the Ground lead to the vehicle parking brake along the floor. Loosen (1) 10mm bolt, fit the terminal connector into the bolt, and tighten the bolt into place [4].



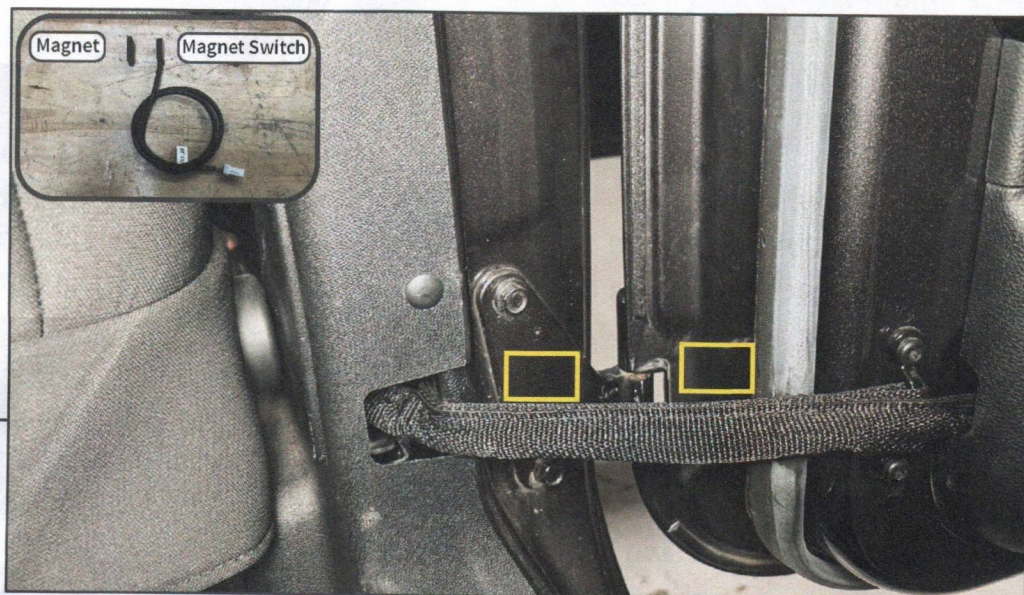
**STEP 12**

**Front Door:** Clean the vehicle door opening & vehicle door under the door limiting bar using (1) alcohol prep pad, and allow to fully dry.

**Door Switch:** Peel the tape backing, and adhere the switch under the door striker.

**Magnet:** Peel the tape backing, and adhere the magnet 1" below the door latch.

Plug in the door switch, and re-install the weather seal and door sill trim to the door opening.

**STEP 13**

**Rear Door:** Clean the vehicle door opening & vehicle door along the lower door hinge.

**Door Switch:** Peel the tape backing, and adhere the switch to the center of the lower door hinge.  
**Magnet:** Peel the tape backing, and adhere the magnet to the door in-line with the switch.

**STEP 14**

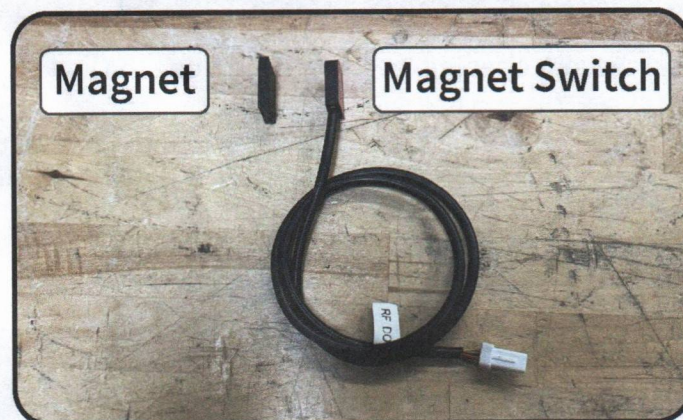
Connect the 12V+ wire lead to the Positive (+) battery terminal. Test each door to ensure side step functionality. Route all wiring using the included cable ties and wire retainers.

Installation is now complete.

# Installation Notes

## Magnet Switches

- With the magnet switches plugged into the main harness, the step assembly will extend downwards. The steps will retract to the vehicle body when the magnets meet the switches.  
Magnet & Switch Together = Step Retract to Body (Door Closed)  
Magnet & Switch Apart = Step Extended from Body (Door Open)
- If the magnets & switches are not properly aligned, the step assembly will remain in the extended position even with the doors closed. The step assembly will retract when all magnets align to each switch on the same side of the vehicle with the entire step harness plugged in.
- The magnet switches may need slight adjustments during installation. It is recommended to install the switches & magnets to the vehicle body using masking tape initially, and then testing the step functionality to ensure proper magnet switch alignment before permanently adhering the magnets and switches to the vehicle.



## Step Adjustment/Alignment

- Aligning the step/brackets is critical for motor life. The following steps will ensure the brackets are aligned for smooth motor operation. Failure to do so can cause premature motor failure.
- During the side step installation to the mounting brackets, ensure all (6) Allen bolts are loose, and then open the door to extend the step assembly & brackets. Slide the assembly along the brackets to best align to the vehicle in the extended position.
- Close the vehicle door to retract the step assembly, but while the step is retracting, assist the step into position while pushing/pulling the step to ensure the mounting points are fully engaged in each bracket. Occasionally, the step assembly needs these adjustment to fully seat to provide smooth movement.
- Once the step is fully seated into the vehicle brackets, fully tighten the (6) Allen bolts.