

# Instructions

## Body Mount Bushings

**N.B:** This instruction sheet should be used in conjunction with the workshop manual and proper safety procedures followed.

*Page 1 of 3*

**Application** - Jeep JK Wrangler  
- 2007-2017

- Loosen all bolts on both sides of vehicle initially.

**Be careful of fan shroud and other components while lifting.  
A hydraulic jack and timber may be used to lift the body.**

- Proceed by replacing mounts from 1 side of vehicle at a time - refer diagrams on next page
- Replace 1 mount at a time, but do not tighten any bolts until all mounts are replaced - note any shims and re-use.
- Once all mounts are replaced, confirm body is straight/aligned - tighten all nuts to Manufacturers specifications.
- It is recommended all hardware is re-checked after 500kms travelled.

**Lift body slowly with jack and Timber**



**N.B:** It is recommended that a licenced workshop or tradesperson carry out the above procedure and that workshop manual and relevant safety procedures are followed in addition to the above.

# Instructions

## Body Mount Bushings

**N.B:** This instruction sheet should be used in conjunction with the workshop manual and proper safety procedures followed.

*Page 2 of 3*



**Contents** - 8x Bushing 91297

- 8x Bushing 91298
- 8x steel tubes
- 16x 3/8 bolts
- 16x 3/8 nuts
- 16x small washers
- 16x large washers
- 2x M12 bolts

- **Unbolt and completely remove original rubber mount.**



**N.B:** It is recommended that a licenced workshop or tradesperson carry out the above procedure and that workshop manual and relevant safety procedures are followed in addition to the above.

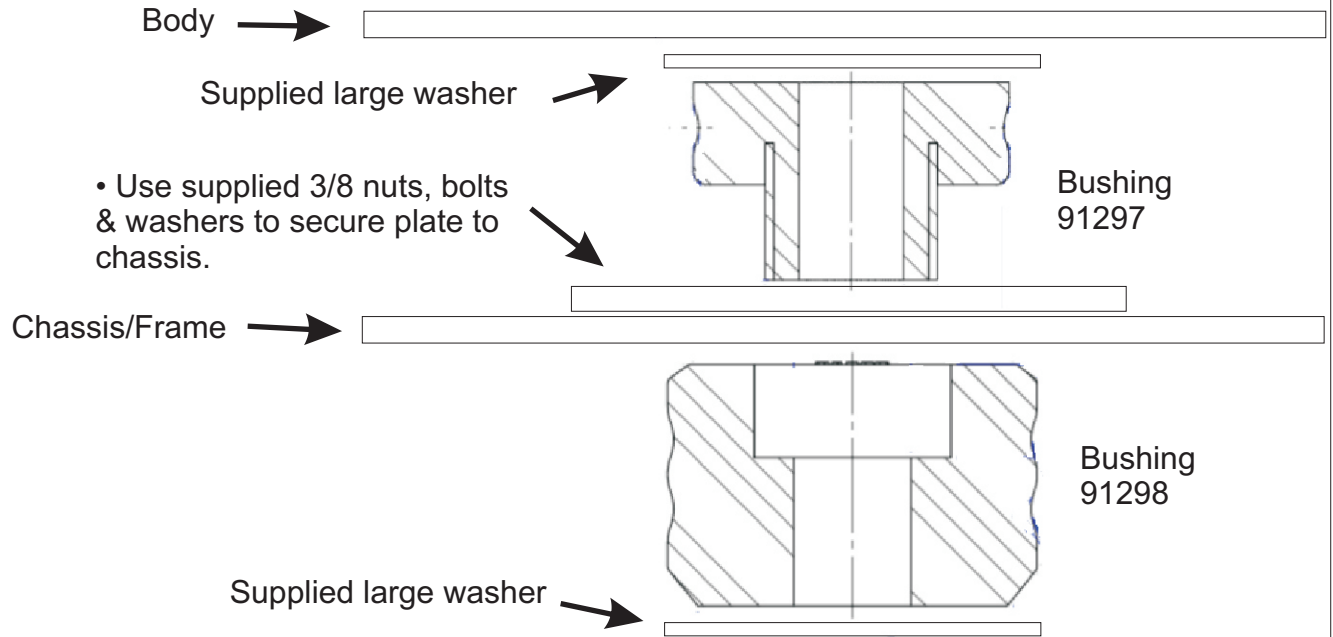


# Instructions

## Body Mount Bushings

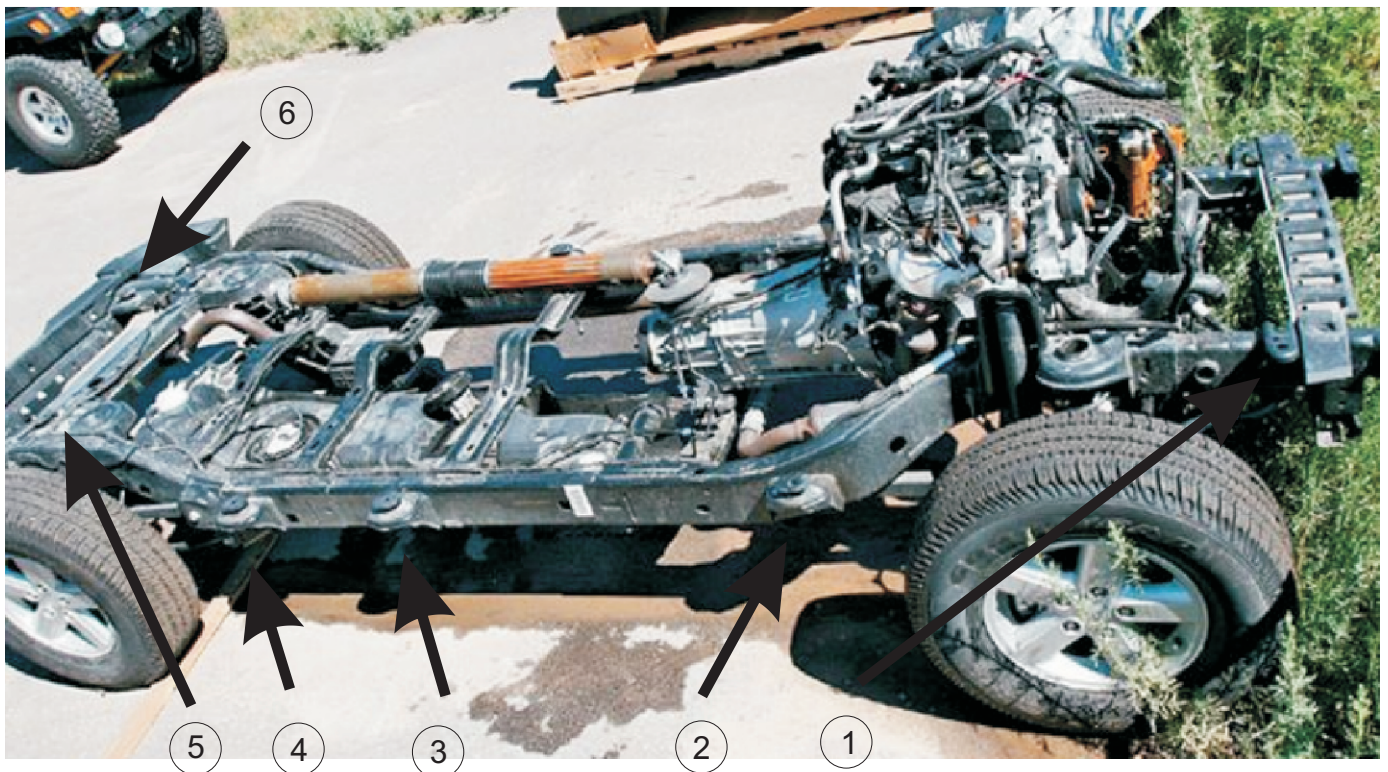
**N.B:** This instruction sheet should be used in conjunction with the workshop manual and proper safety procedures followed.

Page 3 of 3



**Mount positions below:**

**Note - use supplied M12 bolts for position #1**



**Note - positions #3 and #4 not present on 2-door models**

**N.B:** It is recommended that a licenced workshop or tradesperson carry out the above procedure and that workshop manual and relevant safety procedures are followed in addition to the above.