



---

# SKID PLATE FOR TRAIL FORCE HD FRONT BUMPER

(2007-2018 WRANGLER JK)  
(2018-2025+ WRANGLER JL)  
(2020-2025+ GLADIATOR JT)

---

## INSTALLATION INSTRUCTIONS

### CONTENTS

---

- (1) Skid Plate
- (2) JK Brackets
- (1) LH JL/JT Bracket
- (1) RH JL/JT Bracket
- (2) Bracket Spacers
- (2) M8 x 30mm Stud Plates
- (2) M8 Nut/Stud Plates
- (4) M8x1.25 x 30mm Allen Bolts
- (6) M8 Lock Washers
- (8) M8 Flat Washers
- (4) M8 Nuts
- (1) 5mm Allen Key

### TOOLS REQUIRED

---

13mm, 18mm Socket/Wrench  
Ratchet  
5mm Allen Key (Provided)

SKU # J240012



## STEP 1

Remove the lower outer corner 18mm bolt & washers from each side of the bumper.

With assistance, carefully lift the skid plate to the back-side of the vehicle frame horns, and loosely secure the skid plate into place using the (2) original bumper 18mm bolts & washers.



## STEP 2

Identify the mounting brackets for each vehicle using the photo reference above.

Wrangler JK: Steps 3-5

Wrangler JL / Gladiator JT: Steps 6+



### STEP 3

Wrangler JK: Using (1) M8 stud plate, guide the stud through the lower frame through the hole.

Repeat this step for the opposite side of the vehicle.



### STEP 4

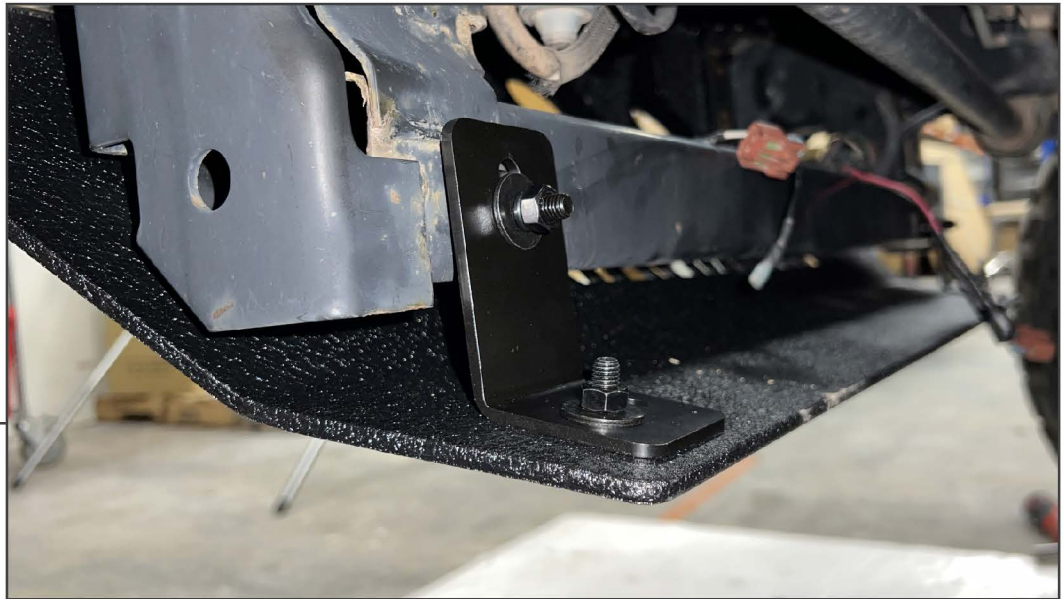
Place (1) bracket spacer onto the stud, followed by the appropriate mounting bracket.

Repeat this step for the opposite side of the vehicle.



---

## STEP 5



Fit (1) M8 flat washer, (1) M8 lock washer, and (1) M8 nut onto the M8 stud plate loosely. Then, loosely secure the mounting bracket to the skid plate using (1) M8 x 30mm Allen bolt, (1) M8 lock washer, (2) M8 flat washers, and (1) M8 nut.

Repeat this step for the opposite side of the vehicle. Then, adjust the skid plate and tighten all hardware evenly until fully secure.

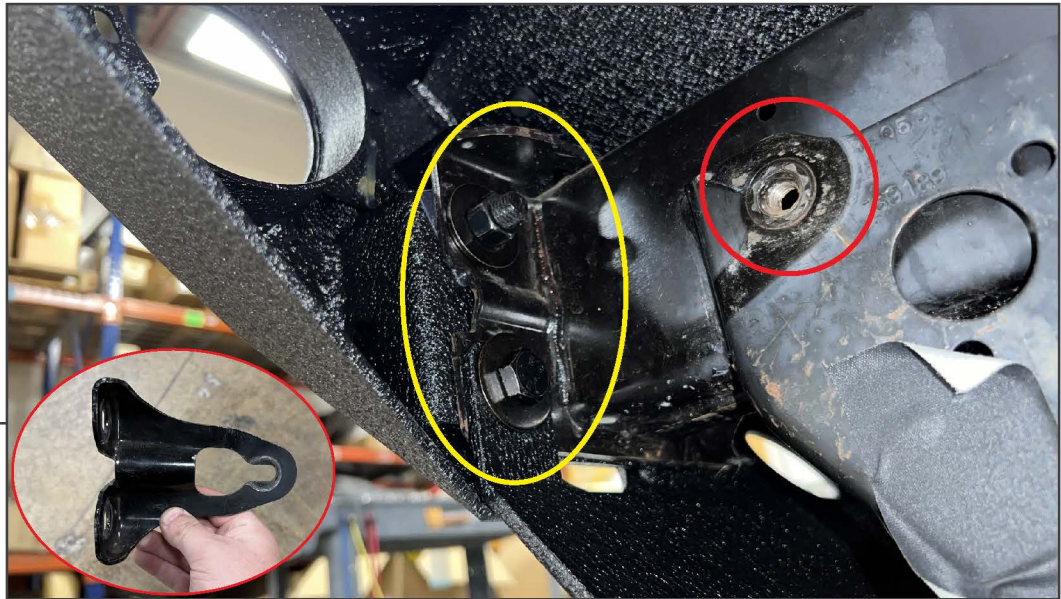
---

## STEP 6



**Wrangler JL / Gladiator JT:** Remove the lower shield from the vehicle by removing (2) 16mm bolts, and lifting the plate out of the retainers.

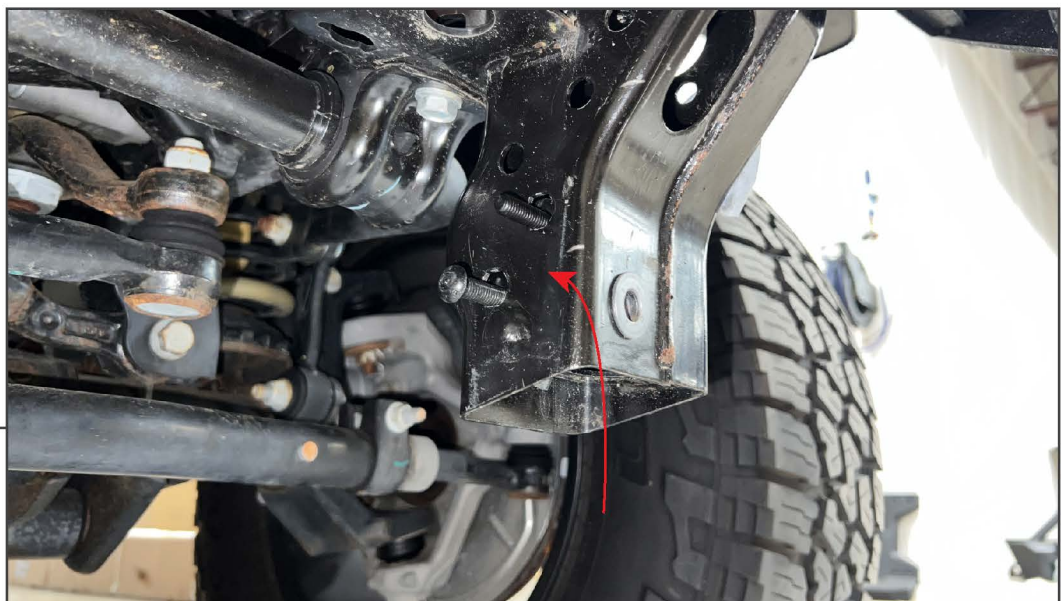
## STEP 7



Identify if the OEM outer bumper brackets are in place. If the outer brackets are still attached, remove the (2) 18mm bolts/nuts, and remove (1) 16mm bolt from the vehicle frame. Remove the bracket and set aside.

If the OEM outer bumper brackets were previously removed, only remove the lower 18mm bolt to prepare for the skid plate.

## STEP 8



Route (1) M8 nut/stud plate upwards through the frame into the frame bolt holes.

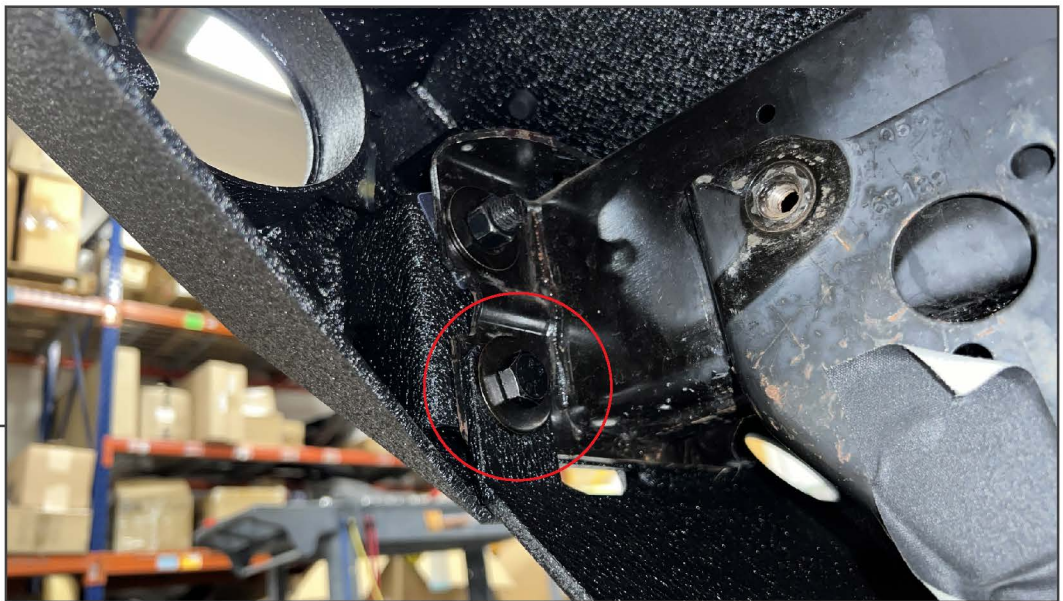




### STEP 9

Using the photo reference above, fit the LH/RH mounting brackets to the vehicle frame using (2) M8 flat washers, (2) M8 lock nuts, (1) M8 x 30mm bolt, and (1) M8 nut.

Repeat this step for the opposite side of the vehicle.



### STEP 10

With assistance, carefully lift the skid plate to the back-side of the vehicle frame horns, and loosely secure the skid plate into place using the (2) original bumper 18mm bolts & washers.

### STEP 11



Loosely secure the skid plate to the previously mounted bracket using (1) M8 x 30mm bolt, (1) M8 lock washer, (2) M8 flat washers, and (1) M8 nut. Add (1) spacer in between the bracket/skid plate per side, if desired.

Repeat this step for the opposite side of the vehicle. Then, adjust the skid plate and tighten all hardware evenly until fully secure.

### STEP 12



Installation is now complete.