



---

# HD TIRE CARRIER WITH SPARE TIRE MOUNT

(2018-2025+ WRANGLER JL)

---

## INSTALLATION INSTRUCTIONS

### CONTENTS

---

- (1) HD Tire Carrier
- (2) Tailgate Hinges
- (2) Tailgate Hinge Pins w/Clips
- (4) Tailgate Spacers
- (1) Tire Carrier Base
- (1) Tire Carrier Mount
- (1) Rear Camera Mount
- (1) Rear Camera Cover
- (1) Upper 3rd Brake Light Bracket
- (1) Lower 3rd Brake Light Bracket
- (4) M12x1.75x40mm Bolts
- (4) M12 Flat Washers
- (4) M10x1.50x35mm Bolts
- (7) M10x1.50x30mm Bolts
- (12) M10 Large Flat Washers
- (14) M10 Flat Washers
- (7) M10 Lock Nuts
- (2) M6x1.00x20mm Allen Bolts
- (4) M6 Flat Washers
- (2) M6 Lock Nuts
- (3) M2 Screws, Washers, Nuts
- (3) Lug Nuts
- (1) Allen Wrench
- (2) Hinge Gaskets

### TOOLS REQUIRED

---

- 13mm, 16mm Sockets
- 3/8" or 1/2" Ratchets & Extensions
- T-9, T-20, T-25, T-40, T-50 Torx Bits
- Trim Panel Removal Tool
- Clean Towel
- Cleaning Solution

SKU # J240010

## STEP 1



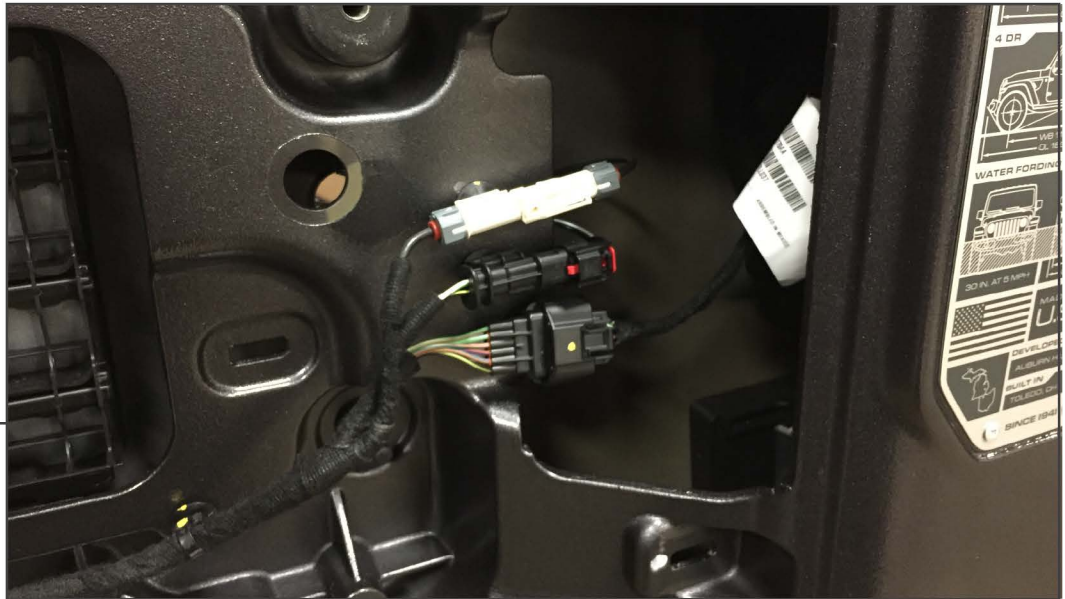
Locate the T-40 Torx lock screw on the camera cover, and turn it counter-clockwise to unlock. Remove the camera cover by pulling away from the vehicle. Then, remove the spare tire.

## STEP 2



Using a trim panel removal tool, carefully pry the plastic tailgate cover off. Remove cover from the vehicle.

### STEP 3



Locate and unplug the (3) wire connections.

### STEP 4

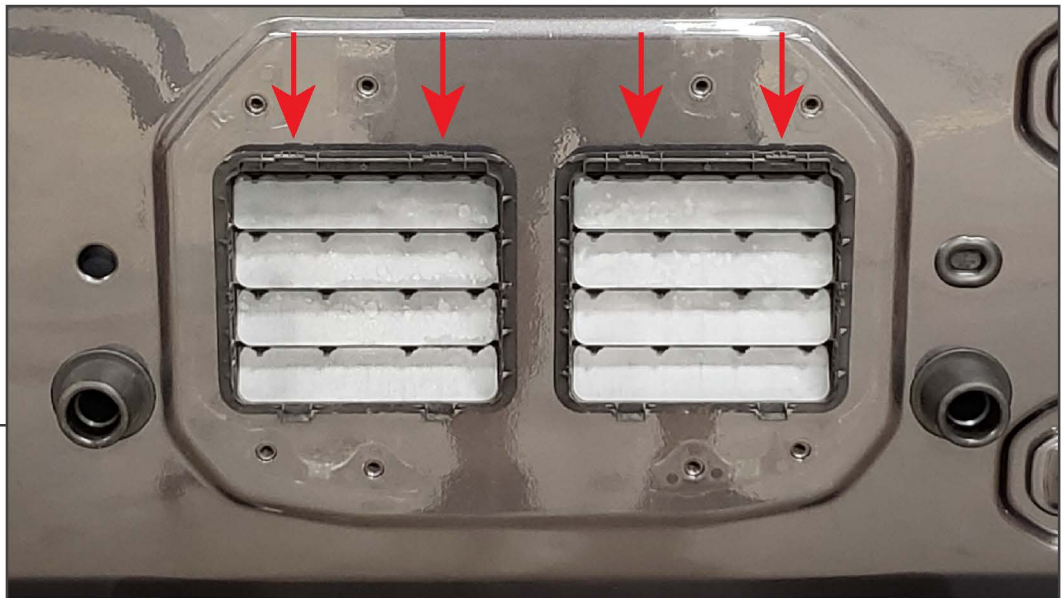


Carefully remove the wiring and grommet from the vehicle. Locate, and remove the (8) 13mm bolts holding the tire carrier secure. Remove the carrier from the vehicle.

Note: Factory hardware will be reused.

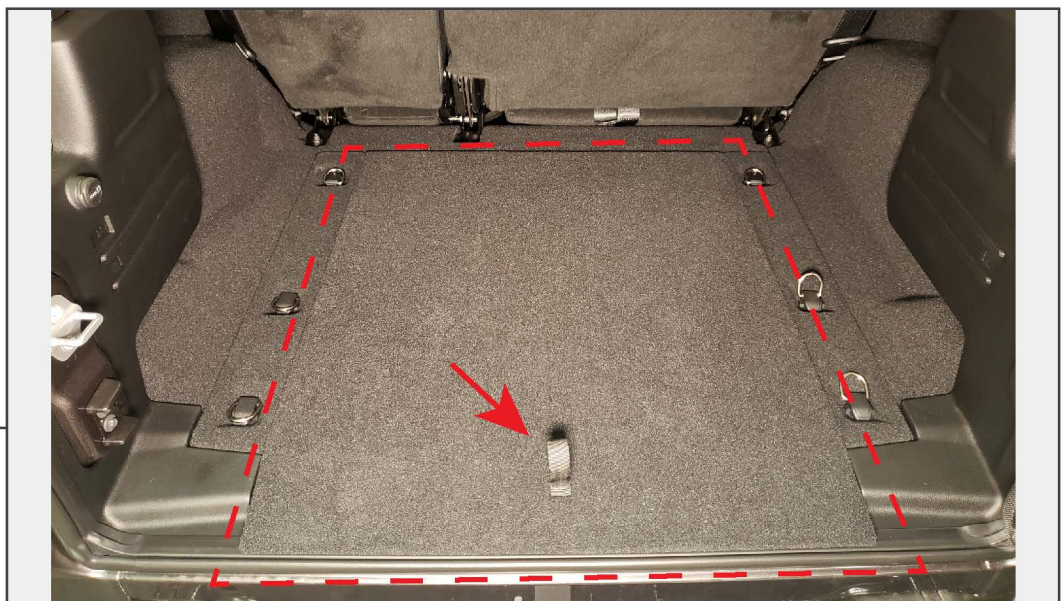


**STEP 5**



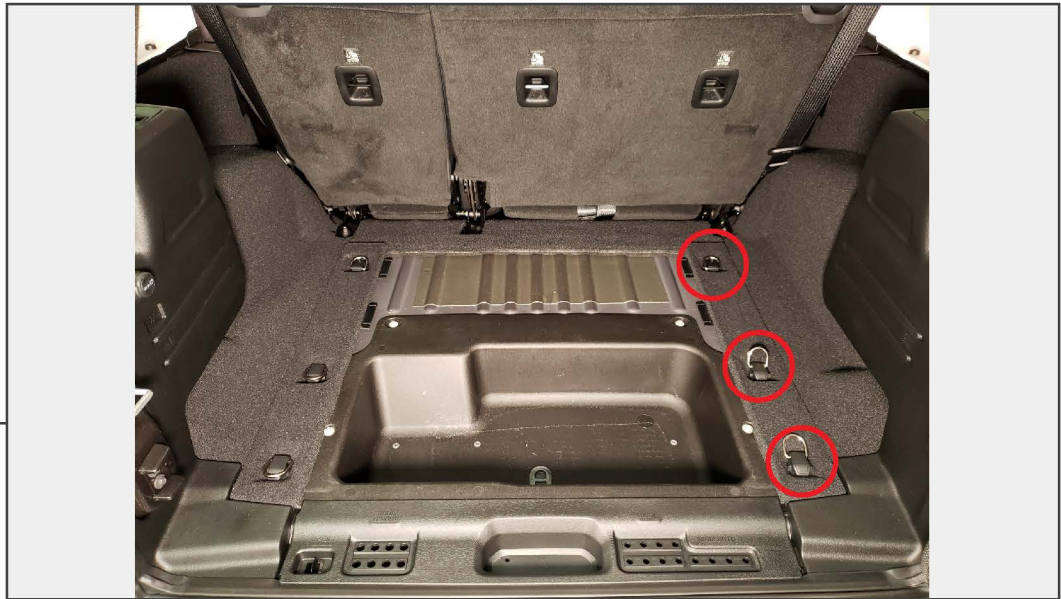
Using a trim panel removal tool, carefully pry downwards on the rear vent tabs. Then, pull the vents away from the tailgate and remove from the vehicle.

**STEP 6**



Pull and remove the rear trunk cover from the cargo area.

**STEP 7**



Locate and remove the (3) passenger side anchor hooks using a T-40 Torx bit. Then, remove the anchor hook panel.

**STEP 8**



Press in the release tab, and remove the rear tire jack cover from the vehicle.

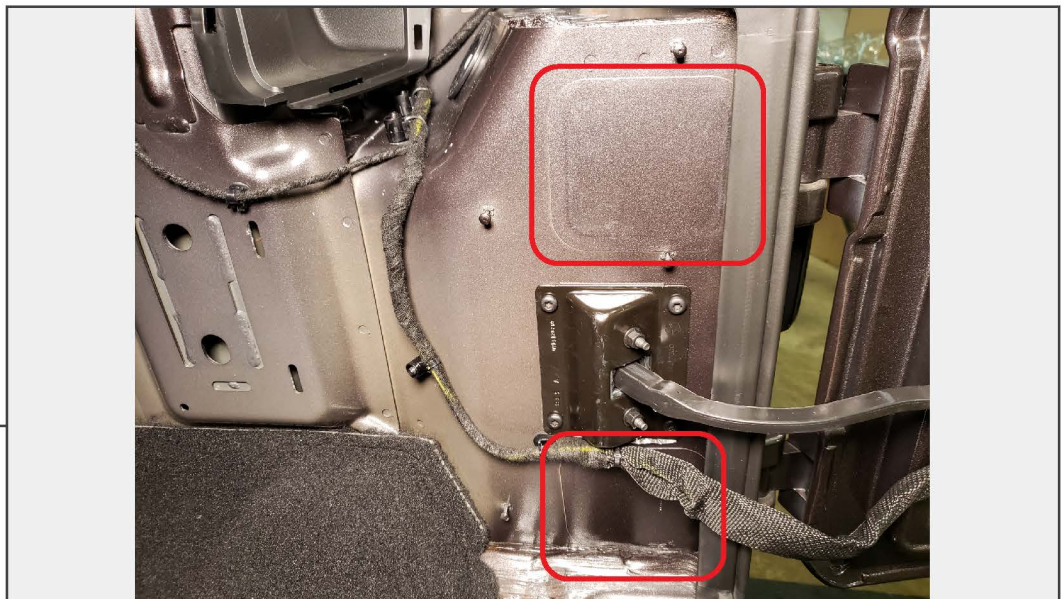


**STEP 9**



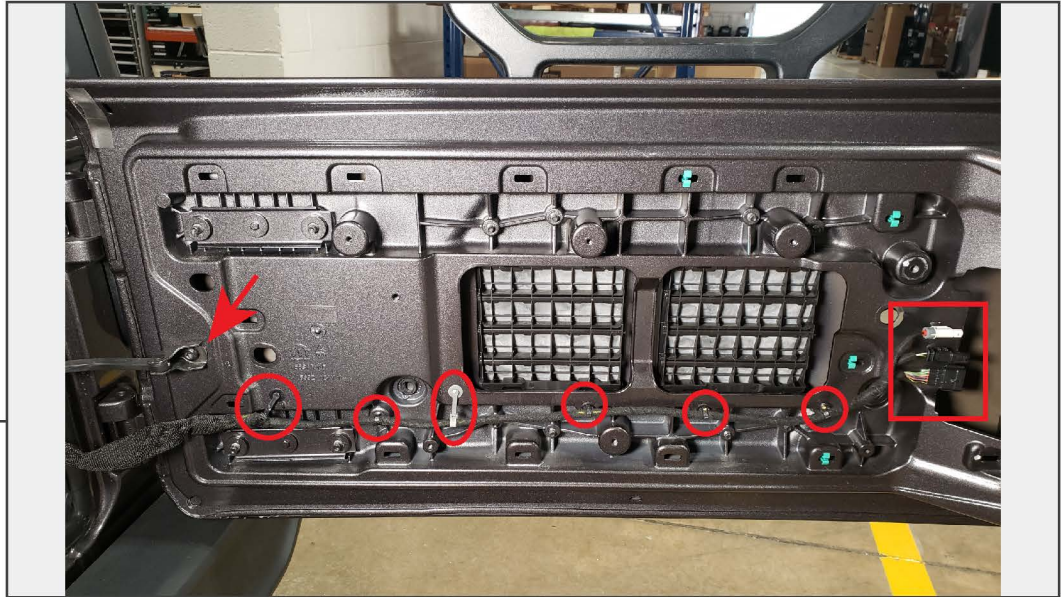
Using a trim panel removal tool, pry and remove the seat belt trim cover and taillight access cover.

**STEP 10**



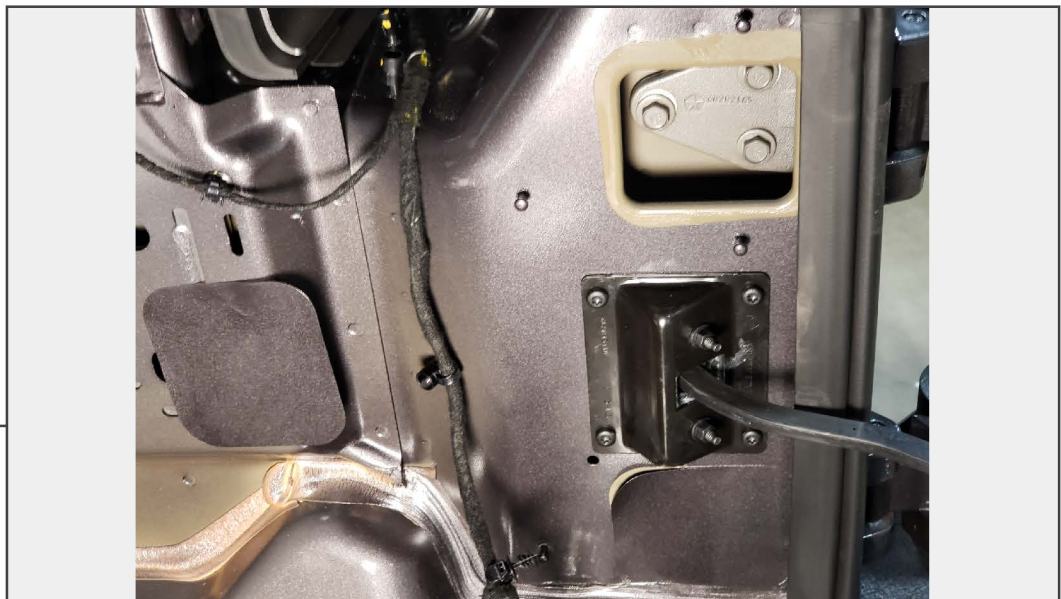
Gently pry the interior trim panel away from the vehicle. Remove the cover to gain access to the hinge vinyl covers.

**STEP 11**



Using a trim panel removal tool, carefully pry the plastic push clips securing the factory wiring to the tailgate. Then, use a T-40 Torx bit to remove the door hinge stop from the tailgate.

**STEP 12**



Carefully peel the (2) vinyl covers to gain access to the tailgate hinge bolts. Remove the (6) 13mm bolts. Remove the tailgate from the vehicle.

Note: It is recommended to have a helper steady the tailgate while removing bolts.

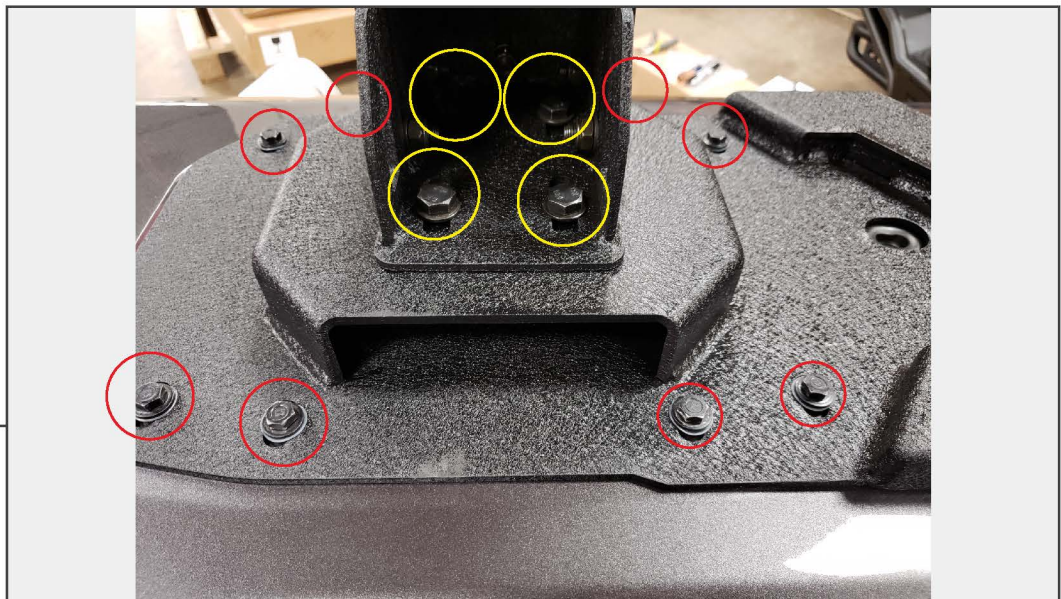


**STEP 13**



Carefully lay the tailgate down on a soft and flat working surface. Remove the (2) T-50 Torx bolts from each hinge. Remove both brackets from the tailgate.

**STEP 14**

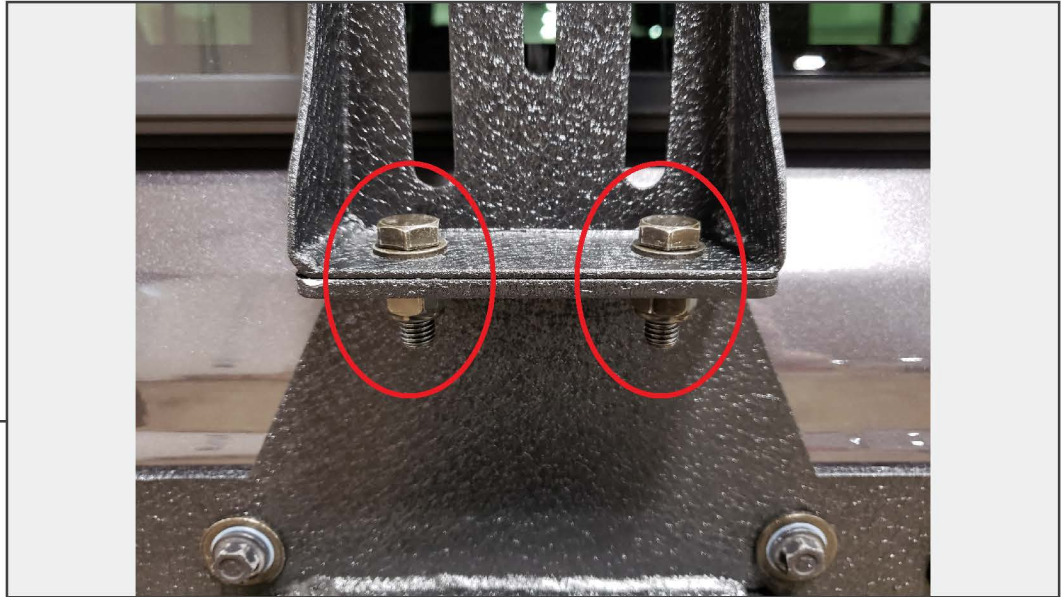


Install the HD tire carrier to the tailgate using the factory hardware from Step 4, and the (4) M12x1.75x40mm bolts, and washers. If necessary, fit the tailgate spacers between the tailgate and the tire carrier assembly.

Then, secure the spare tire base to the carrier using the (4) M10x1.50x35mm bolts, washers, and lock nuts.



**STEP 15**



Install the lower part of the third brake light bracket to the carrier using the (2) M10x1.50x30mm bolts, washers, and lock nuts.

**STEP 16**



Install the upper third brake light bracket to the lower bracket using the (2) M6x1.00x20mm Allen bolts, washers, and lock nuts.

## STEP 17



Remove the (7) T-25 Torx screws to gain access to the third brake light and wiring. Unplug the connector and remove the (2) T-20 Torx screws securing the third brake light. Transfer the 3rd brake light to the new bracket. Carefully tighten the factory torx screws. The screw bosses are plastic and can strip out easily.

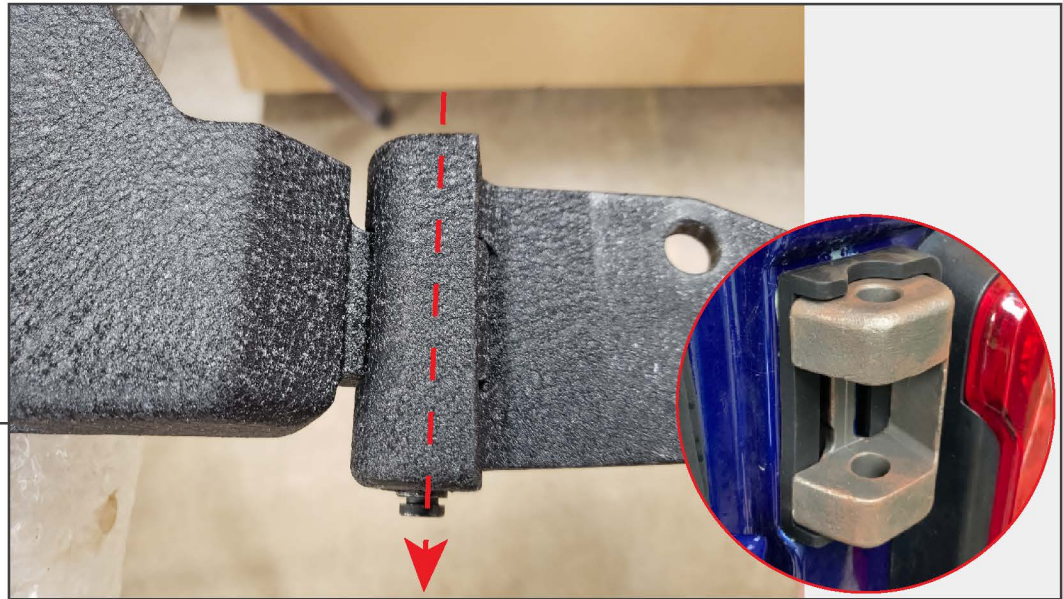
## STEP 18



Remove the (2) T-25 Torx screws from the original tire carrier. Pull the camera mounting assembly through the rear of the tire carrier. Unplug the connector, and remove the T-9 Torx screws securing the camera to the bracket. Transfer the camera to the new bracket using the (2) M2 screws, washers, and nuts.



**STEP 19**



Using a large hammer, carefully hammer in the hinge pin to install the door hinge to the carrier. Then, secure the pin using the metal 'C' clip. Place the provided hinge gasket over the hinge prior to installing it to the vehicle.

**STEP 20**



Install the spare tire carrier mount to the spare tire base using the (5) M10x1.50x30mm bolts, washers, and nuts. Then, install the camera bracket to the carrier mount. This will be secured in place once the spare tire is mounted.



---

## STEP 21

Reinstall the tailgate using the factory hinge hardware from Step 12.

Note: Have a helper help steady the tailgate in place while tightening the hinge bolts.

Reinstall the wiring connections, interior panels, and spare tire. Adjust the spare tire/third brake light height as necessary.

Installation is now complete.