



HD FRONT BUMPER WITH 20-INCH LIGHT BAR

(2018-2025+ WRANGLER JL)
(2020-2025+ GLADIATOR JT)

INSTALLATION INSTRUCTIONS

CONTENTS

(1) Front Bumper	(8) M6 Lock Washers	LED Lighting Kit:
(1) LH Fog Light Housing	(14) M6 Flat Washers	(1) 20" Light Bar
(1) RH Fog Light Housing	(6) M6 Flange Nuts	(1) Wiring Harness
(2) Fog Light Mounting Brackets	(1) 4mm Allen Key	(2) M6x1.00 x 16mm
(4) M12 Plastic Retainers	(12) M4x0.7 x 16mm	Allen Bolts
(4) M12x1.75 Double Stud Plates	Allen Bolts	(2) M6 Lock Washers
(8) M12 Flat Washers	(12) M4 Lock Washers	(4) M6 Flat Washers
(8) M12 Lock Washers	(20) M4 Flat Washers	(2) M6 Nuts
(8) M12x1.75 Nuts	(8) M4 Nuts	
(8) M6x1.00 x 20mm Allen Bolts	(1) 2.5mm Allen Key	

TOOLS REQUIRED

7, 8, 10, 15, 16, 19mm Sockets
Ratchet w/ Extension
Panel Removal Tool
2.5, 4mm Allen Keys (Provided)

SKU # J240009

STEP 1



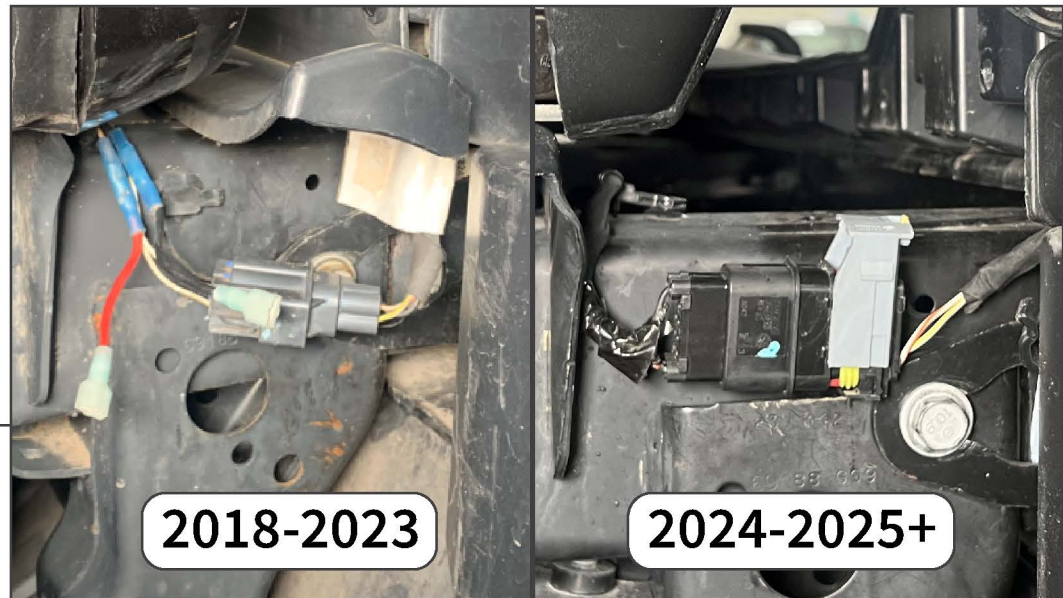
Using a panel removal tool, remove the (8) plastic push clips securing the trim panel between the grille and front bumper. Remove the trim panel from the vehicle.

STEP 2



From under the vehicle, remove (2) 8mm screws from the lower splash shield.

STEP 3



Locate the fog light wiring harness connector along the passenger side frame rail.

2018-2023 Year Vehicle: Slide the red lock back, and press the connector tab to unplug the connector.

2024-2025+ Year Vehicle: Slide the yellow lock back, and slide the gray connector latch upwards.

Removing the connector from the frame retainer may be necessary for additional working room.

STEP 4



Remove (8) 18mm nuts securing the front bumper assembly to the vehicle frame. Using an extension and a deep socket is recommended to reach the hardware.

Remove the bumper from the vehicle and place on a soft workable surface.

Remove the (4) bumper reinforcement plates by removing (4) 16mm bolts.



STEP 5

If installing the lower skid plate (SKU # J127064-JL), remove (2) 16mm bolts from the lower splash plate.

The splash plate can remain in place without the optional skid plate, if desired.



STEP 6

Begin disassembly of the original front bumper to gain access to the fog light wiring harness. Remove (8) plastic push clips from the lower splash shield.

STEP 5



Remove (6) plastic push clips from the bumper end caps covering the fog lights.

Note: Some vehicles may use 7mm screws to secure the end caps instead of plastic push clips.

STEP 6



Unplug each fog light from the fog light harness. Then, remove (4) 7mm screws from each fog light. Set the fog light aside for installation later.

STEP 7



Remove (8) 15mm nuts from the metal bumper core. Then, lift the core away from the bumper.

STEP 8



Remove the (2) bumper mounting/recovery hooks from the bumper. Then, remove the (24) 7mm screws around the perimeter of the bumper.

STEP 9



Lift the rear portion of the bumper away from the front portion. Use a panel removal tool to release all of the fog light harness retainers.

Set the fog light wiring harness aside for installation later.

STEP 10

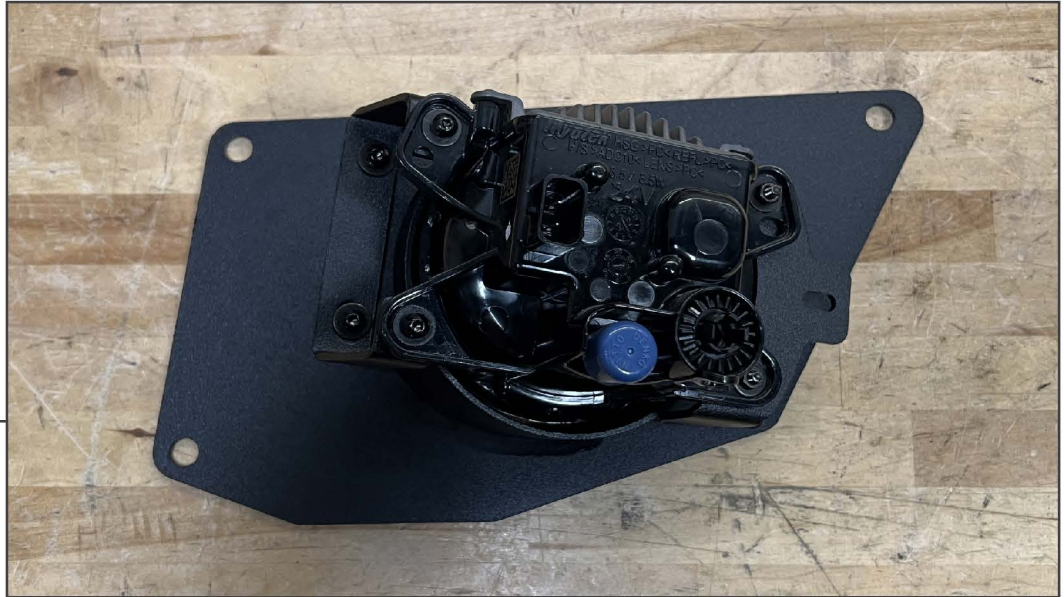


Lay out and identify all bumper components and hardware.

Install (1) fog light bracket to the (1) fog light housing using (2) M4 Allen bolts, (2) M4 lock washers, and (2) M4 flat washers.

Repeat this step for the opposite side fog light housing.

STEP 11

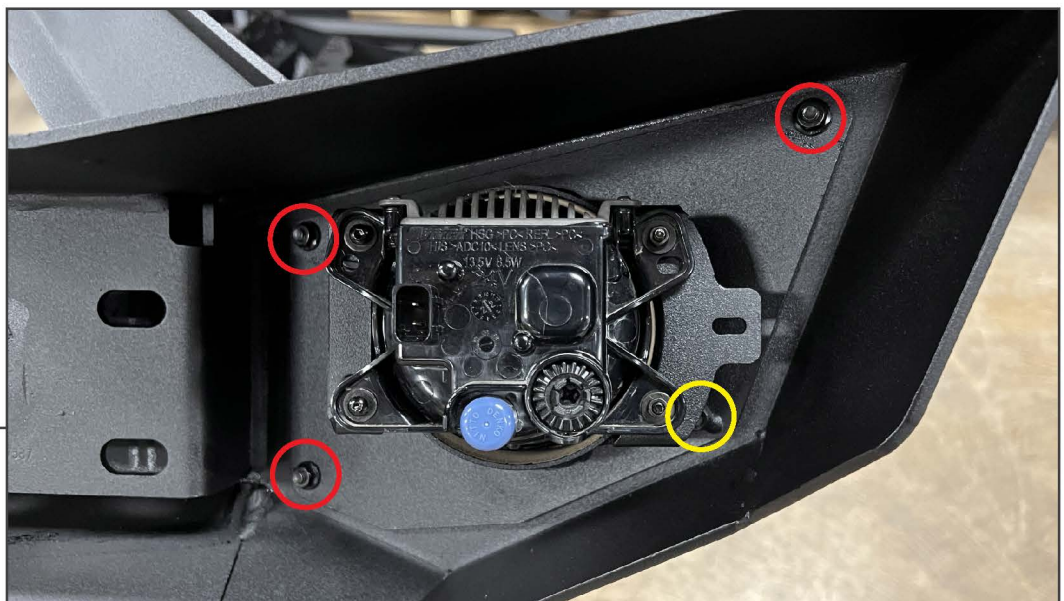


Install the original fog light to the assembled fog light housing using (4) M4 Allen bolts, (4) M4 lock washers, (8) M4 flat washers, and (4) M4 nuts.

Repeat this step for the opposite side fog light.

Note: Installing the M4 hardware can be tedious. Take your time to fit each bolt/nut into place.

STEP 12



Identify the location of the (1) welded nut inside of the fog light housing. Then, fit the fog light housing to the bumper and secure into place using (4) M6 x 20mm Allen bolts, (4) M6 lock washers, (7) M6 flat washers, and (3) M6 flange nuts.

Repeat this step for the opposite side fog light housing.

STEP 13



Light Bar Installation: Fit the light bar to the bumper with the wiring harness to fit on the passenger side of the vehicle. Secure the light bar to the bumper over-rider bar using (2) M6 x 16mm bolts, (2) M6 lock washers, and (2) M6 flat washers.

Block-off Plate Installation: Secure the block-off plate to the bumper over-rider bar using (2) M6 x 16mm bolts, (2) M6 lock washers, (4) M6 flat washers, and (2) M6 nuts.

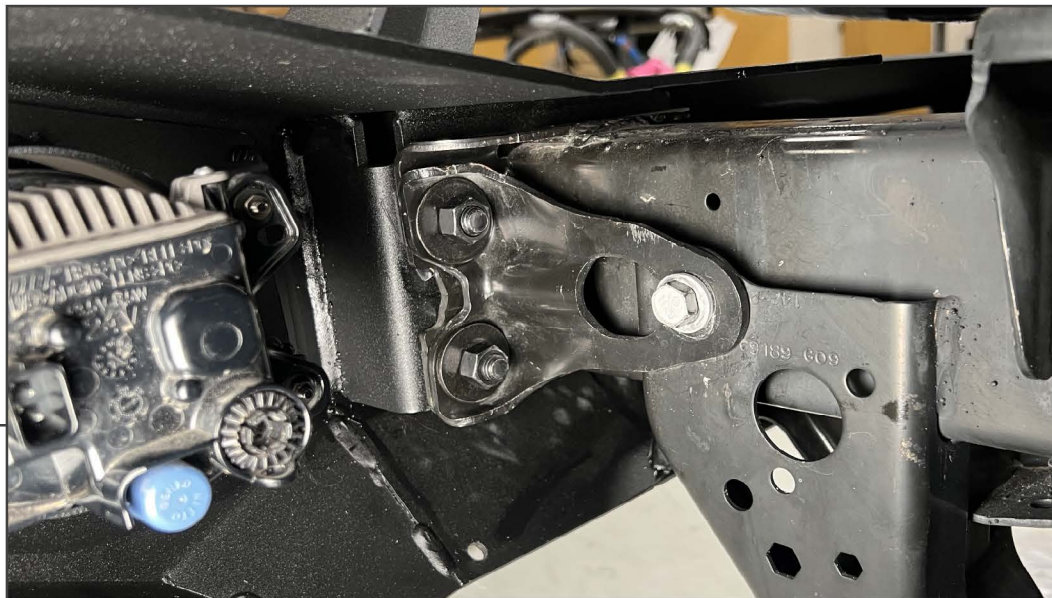
STEP 14



Place (2) M12 double stud plates behind the bumper mounting points, and secure each stud plate into place using (1) M12 plastic retainer.

Note: It is recommended to fold and then unfold the retainer in half before pressing onto the stud to allow for a tighter fit to the stud.

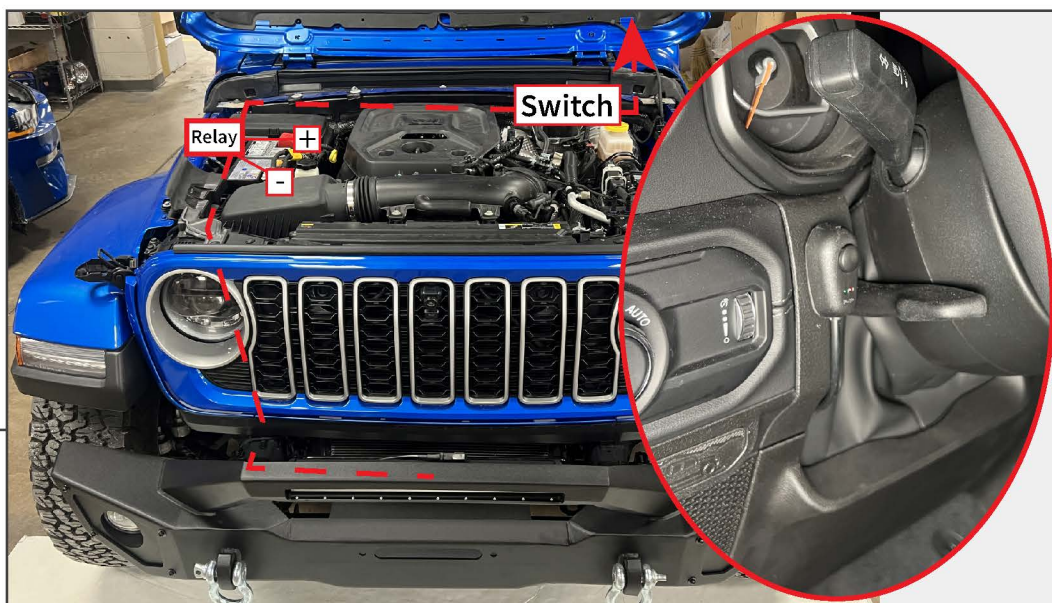
STEP 15



With a helper, lift the bumper to the vehicle frame rails. Loosely fit the bumper to the vehicle, and adjuster/center the bumper into place. If desired, re-install the reinforcement plates using the original hardware (install one side at a time, expand bolt holes if necessary).

Once fully adjusted, secure the bumper into place using (8) M12 flat washers, (8) M12 lock washers, and (8) M12 nuts.

STEP 16



If the light bar is installed, carefully route the wiring harness from the light bar towards the vehicle battery. Then, route the switch towards a suitable firewall grommet on the driver side. Mount the switch to the dashboard using the double sided tape. Secure the relay in the engine bay. Connect the Red lead to the positive (+) battery terminal, and the Black lead to the negative (-) battery terminal. Test lighting before fully securing harness to the vehicle.



STEP 17

Carefully route the vehicle fog light harness neatly along the back-side of the bumper, and plug the harness into the vehicle harness connector.

Install the (2) 3/4" D-Rings to the bumper.

Installation is now complete.