



EXTREME HEAVY DUTY ROCKER STEPS

(2018-2025+ WRANGLER JL - 4 DOOR)

INSTALLATION INSTRUCTIONS

CONTENTS

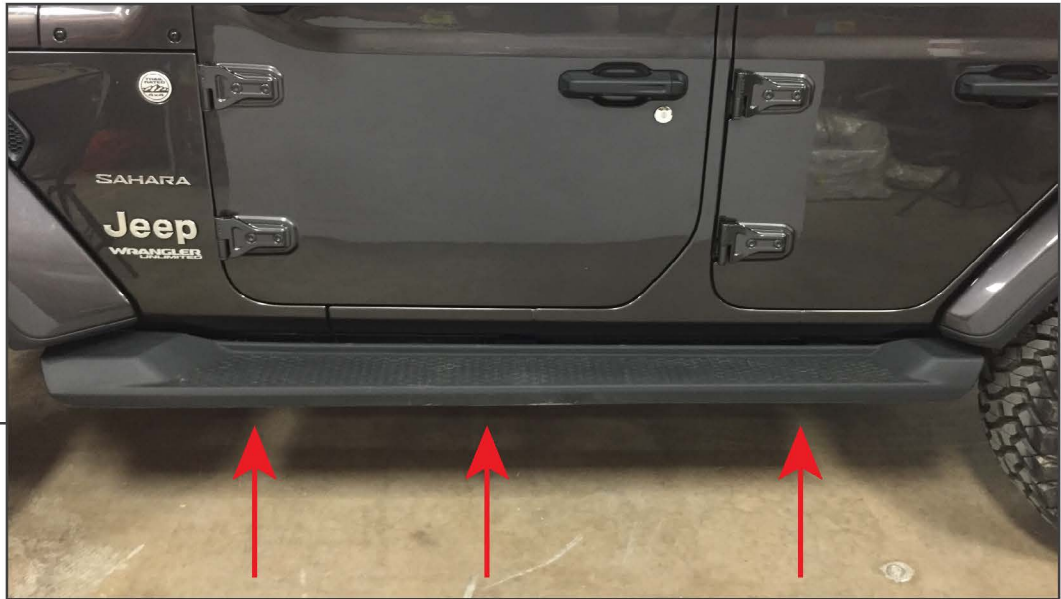
(1) Driver Side Rocker Step
(1) Passenger Side Rocker Step
(6) M10x35mm Bolts
(12) M10 Flat Washers
(6) M10 Lock Nuts
(6) M8x35mm Bolts
(6) M8 Lock Washers
(6) M8 Flat Washers
(12) M6x25mm Bolts
(12) M6 Lock Nuts
(24) M6 Flat Washers
(6) Pinch Weld Brackets

TOOLS REQUIRED

10, 13, 16, 17mm Sockets
Ratchet
Clean Towel
Cleaning Solution

SKU # J240004

STEP 1



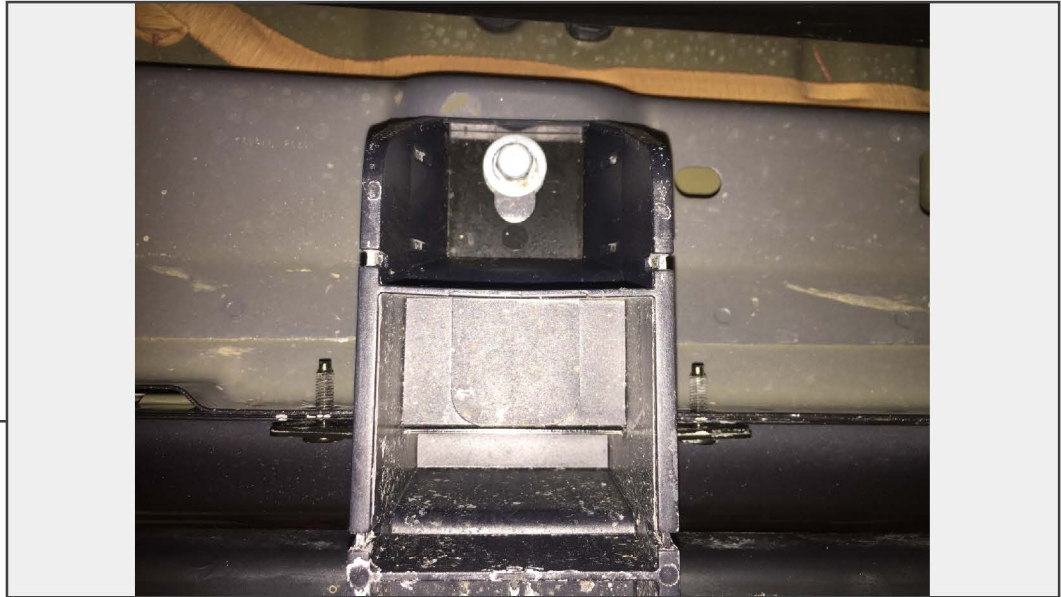
Begin by locating the (3) pinch weld mounting locations under the vehicle.

STEP 2



From under the vehicle, remove all (6) 10mm nuts holding the OEM side step to the pinch welds of the vehicle.

STEP 3



From under the vehicle, locate and remove each of the 13mm rocker panel mount bracket bolts.

Note: The OEM side step will now be loose.

STEP 4



Carefully pull the side step away from the vehicle and downward to remove from the vehicle. Take this time to clean the pinch welds, and body mounts from any road debris.

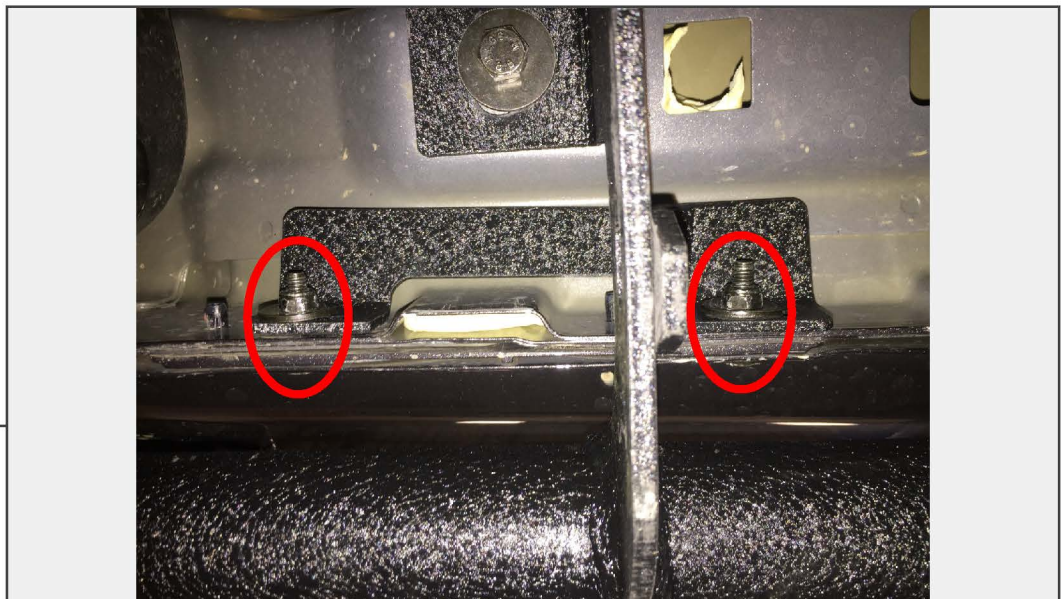
STEP 5



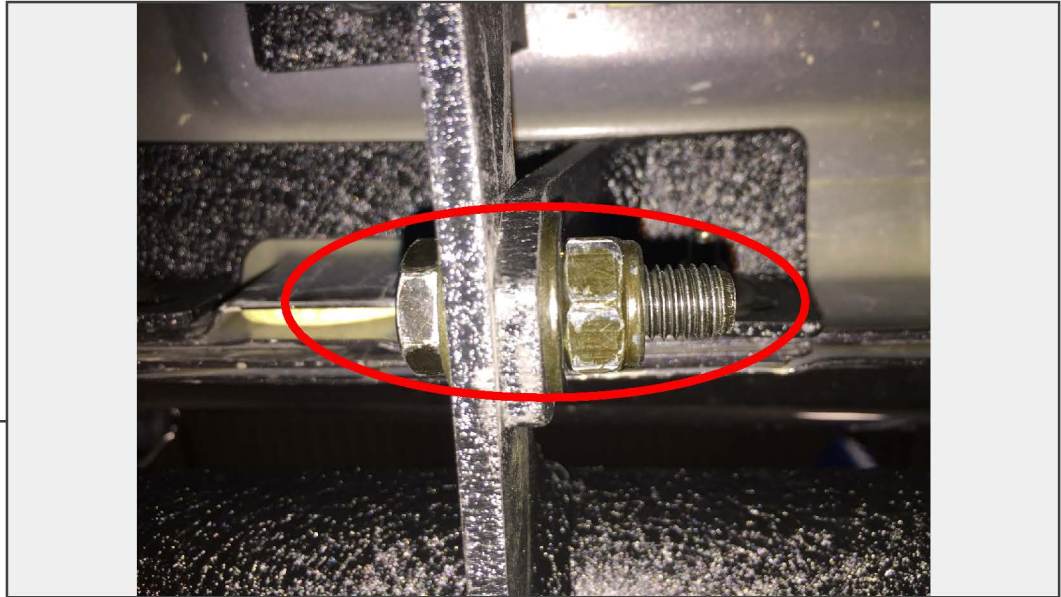
Position the new Rocker Step to the vehicle rocker panel bolt holes, and secure using the (3) M8x35mm bolts, lock washers, and flat washers through the rocker mount brackets.

Note: Do not fully tighten at this time to allow for adjustment later.

STEP 6



Align the pinch weld mounting brackets with the pinch weld holes of the vehicle and tighten using the (6) M6x25mm bolts, flat washers, and lock nuts.



STEP 7

Connect the pinch weld brackets to the Rocker Step brackets by using (3) M10x35mm bolts, flat washers, and lock nuts. Then, fully tighten the rocker mount brackets from Step 5.

Note: If front to back adjustment is needed, loosen the hardware from Steps 5 & 7 to achieve the position desired then re-tighten fully.



STEP 8

Verify all hardware is fully secure. Repeat Steps 1-8 for the remaining rocker step on the opposite side of the vehicle.

Installation is now complete.