



---

# ENHANCED RUBI RAILS

(2018-2025+ WRANGLER JL - 4 DOOR)

---

## INSTALLATION INSTRUCTIONS

### CONTENTS

---

(1) Driver Side Rubi Rail  
(1) Passenger Side Rubi Rail  
(6) M8 x 35mm Bolts  
(6) M8 Lock Washers  
(6) M8 Flat Washers  
(12) M6 Nuts  
(12) M6 Flat Washers  
(12) Pinch Weld Spacers

### TOOLS REQUIRED

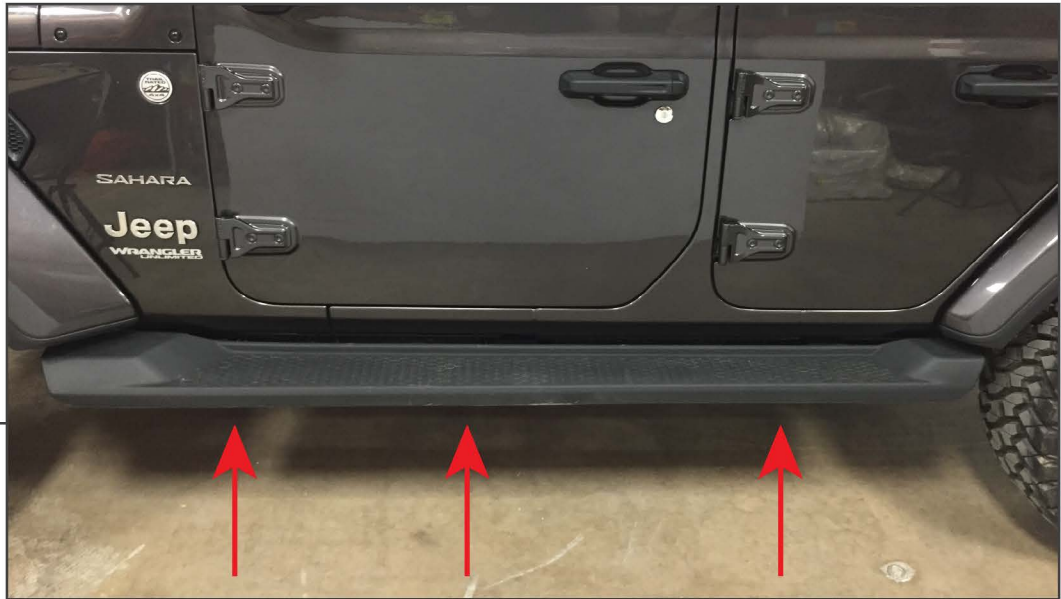
---

10mm, 13mm Sockets  
Ratchet  
Clean Towel  
Cleaning Solution

SKU # J240002

---

**STEP 1**



Begin by locating the (3) pinch weld mounting locations under the vehicle.

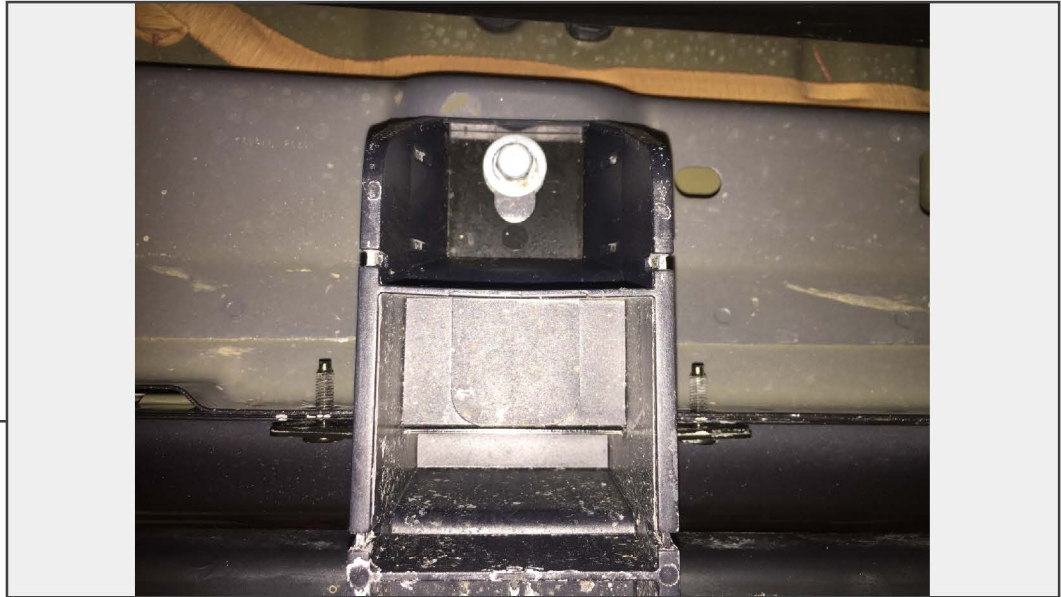
---

**STEP 2**



From under the vehicle, remove all (6) 10mm nuts holding the OEM side step to the pinch welds of the vehicle.

### STEP 3



From under the vehicle, locate and remove each of the 13mm rocker panel mount bracket bolts.

Note: The OEM side step will now be loose.

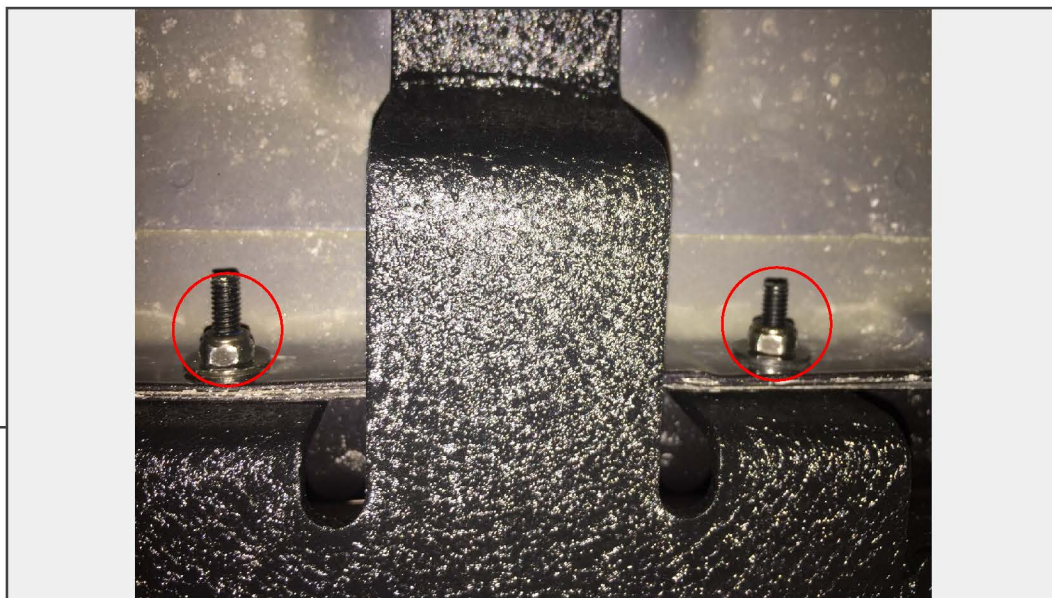
### STEP 4



Carefully pull the side step away from the vehicle and downward to remove from the vehicle. Take this time to clean the pinch welds, and body mounts from any road debris.



## STEP 5



Align and fit the new Enhanced Rubi Rail mounting studs through the vehicle pinch weld mounting holes. Tighten the Rubi Rail using the (6) M6 nuts and washers to the pinch welds.

Note: Due to vehicle manufacturing variances, it may be necessary to use the supplied spacers between the Rubi Rail and pinch weld. Begin by test fitting the part with no spacers. If the Rubi Rail makes contact with the vehicle, start by using 3mm spacer between the Rubi Rail and the vehicle pinch weld and test fitment again. If contact is still occurring, install the 5mm spacer. Use the least amount of spacers as possible to achieve desired fitment.

## STEP 6



Once the Rubi Rails are tight to the pinch welds, install the (3) M8 x 35mm bolts, flat washers, and lock washers through the rocker panel mounts.



---

## STEP 7

Verify all hardware is fully tightened.

Repeat Steps 1-7 for the remaining Rubi Rail on the opposite side of the vehicle.

Installation is now complete.