



ALUMINUM INNER FENDER LINERS - FRONT

(2018-2025+ WRANGLER JL)

INSTALLATION INSTRUCTIONS

CONTENTS

- (1) Driver Side Inner Fender
- (1) Passenger Side Inner Fender
- (2) Body Mount Brackets
- (2) Fender Mount Brackets
- (2) Speed Clips
- (12) M10x1.50x25mm Allen Bolts
- (12) M6 Lock Washers
- (12) M6 Big Flat Washers
- (4) M6 Small Flat Washers
- (2) M6 Nuts
- (1) Allen Wrench

TOOLS REQUIRED

- Trim Panel Removal Tool
- Small Phillips Head Screwdriver
- Large Phillips Head Screwdriver
- 10mm Socket
- Ratchet & Extensions

SKU # J239999

STEP 1



Begin by removing the factory fender liners by removing the (3) plastic pop rivets located above by using a small Phillips head screw driver and pushing the center of the rivet through.

STEP 2



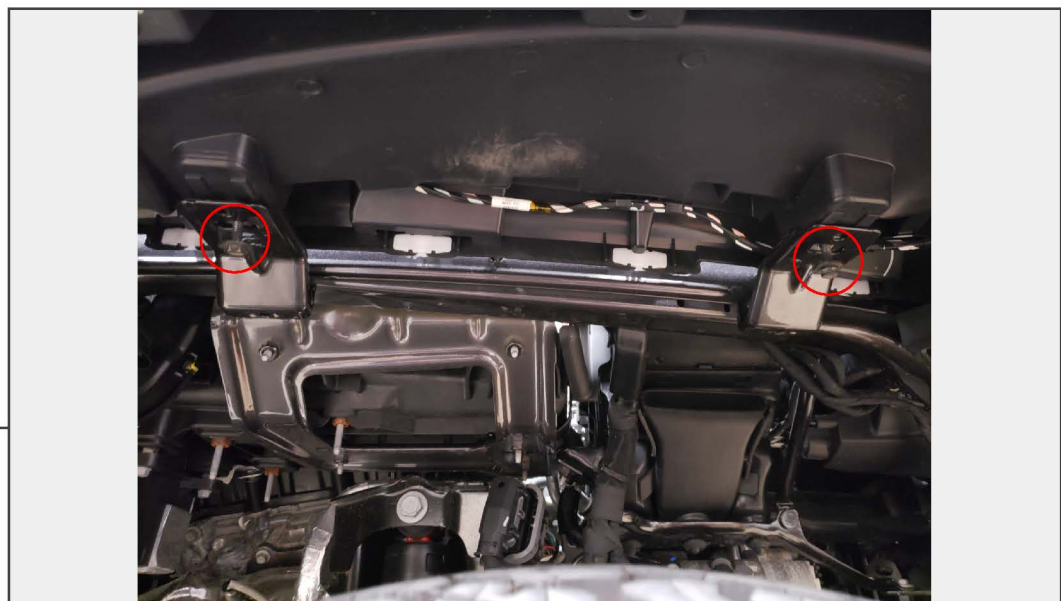
Using a trim panel removal tool, locate and remove the (2) lower push clips securing the back portion of the front fender liner in place.



Front of
Vehicle

STEP 3

Located and remove the (3) 10mm screws securing the front portion of the front fender liner in place. Then, fully remove the fender liner from the vehicle.



STEP 4

Locate and remove the (2) 10mm bolts holding the fender to the fender brackets.

STEP 5



Locate, and unplug the fender wiring plug connector. Then locate and carefully depress the (11) plastic push clips using a trim panel removal tool, and remove the fender from the vehicle.

STEP 6



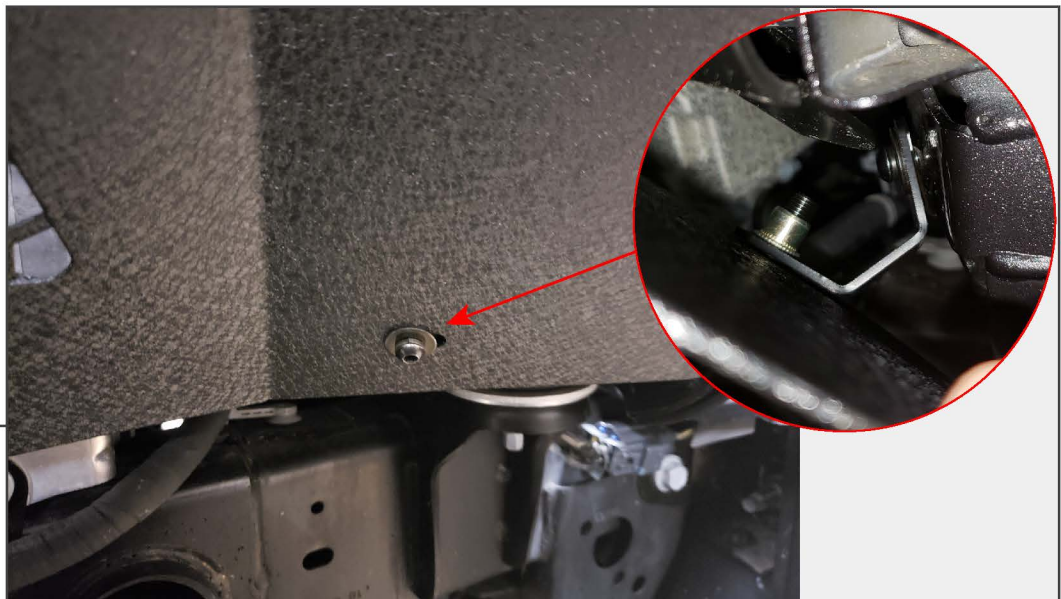
Locate the lower body mount, and insert the (1) speed clip on the sheet metal behind the body mount over the pre-drilled hole.

STEP 7



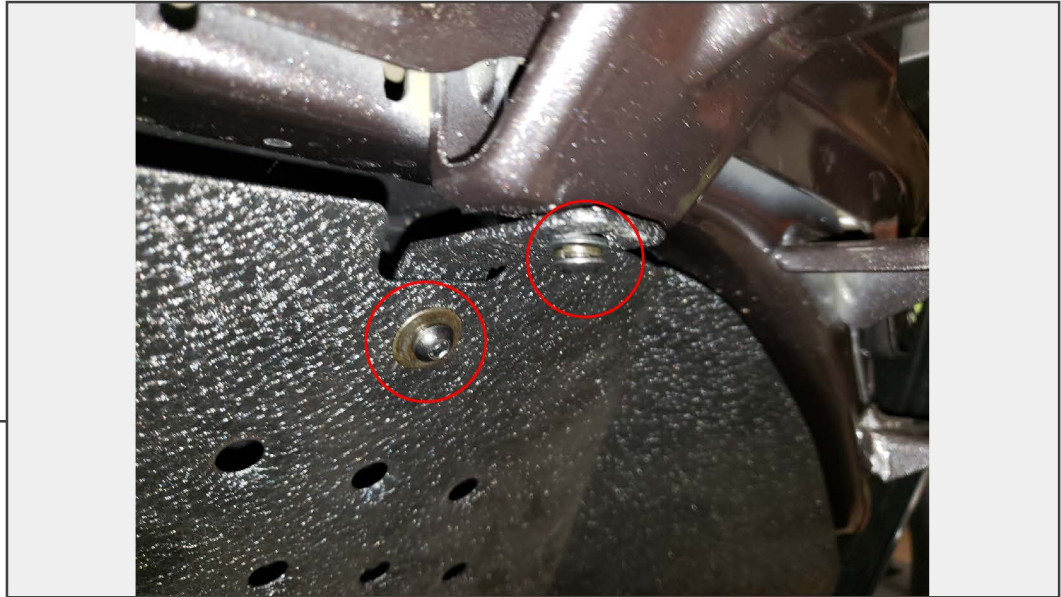
Attach the lower body bracket to the speed clip that was installed in the last step using (1) M10x1.50x25mm Allen bolt, lock washer, and flat washer.

STEP 8



Hold the inner fender liner up to the wheel well. Attach the lower front portion of the inner fender liner to the lower body bracket using (1) M10x1.50x25mm Allen bolt, lock washer, and flat washer.

STEP 9



Attach the upper fender bracket to the fender mount using the (1) M10x1.50x25mm Allen bolt, lock washer, flat washers, and nuts. Then attach the upper portion of the fender liner to the upper fender bracket using (1) M10x1.50x25mm Allen bolt, lock washer, and flat washer.

STEP 10



Align the rear portion of the fender liner with the holes of the factory fender flare. Attach the rear portion of the fender liner to the body using (2) M10x1.50x25mm Allen bolts, lock washers and flat washers.

STEP 11



Remove the (2) plastic push clips shown in the picture above using a flat head screw driver.

****Note:** These locations are now being used by the rear portion of the fender liner hardware.

STEP 12



Re-connect the fender flare wiring harness. Align the fender flare with the factory hole locations and gently press the fender flare in to secure to the body. Then re-install the (3) 10mm bolts from Step 3-4. Repeat steps 1-11 for the opposite side. Installation for the front is now complete.