



EXTREME HD REAR BUMPER

(2018-2025+ WRANGLER JL)

INSTALLATION INSTRUCTIONS

CONTENTS

- (1) Rear Bumper
- (1) Hitch Assembly
- (2) D-Rings
- (1) Hitch Plate
- (2) Block Off Plates
- (1) License Plate Bracket
- (1) Dual Nut Plate
- (4) M12x1.75 x 120mm Bolts
- (2) M12x1.75 x 40mm Bolts
- (12) M12 Flat Washers
- (6) M12 Lock Washers
- (6) M12 Nuts
- (4) 9/16-18 x 40mm Bolts
- (8) 9/16 Flat Washers
- (4) 9/16 Lock Washers
- (6) M10x1.50 x 25mm Screws
- (6) M10 Flat Washers
- (6) M10 Lock Washers
- (2) LED License Plate Lights

TOOLS REQUIRED

- 16mm, 18mm, 21mm Sockets
- Ratchet
- T-40 Torx Bit
- Trim Panel Removal Tool
- Clean Towel
- Cleaning Solution

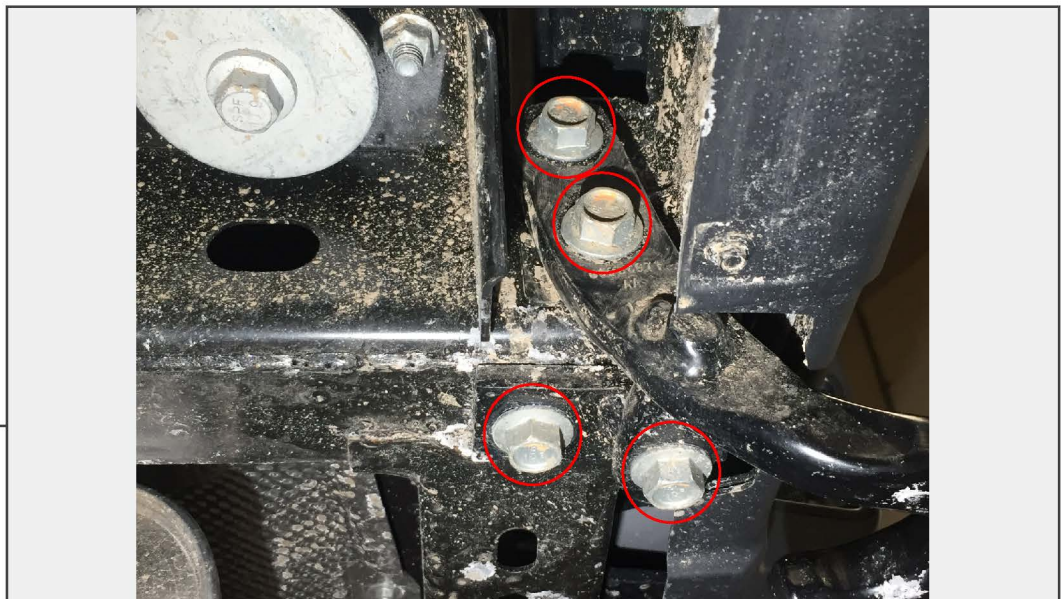
SKU # J239994

STEP 1



Locate the T-40 Torx lock screw on the camera cover, and turn it counter-clockwise to unlock. Remove the camera cover by pulling away from the vehicle. Then, remove the (3) lug nuts to remove the spare tire.

STEP 2



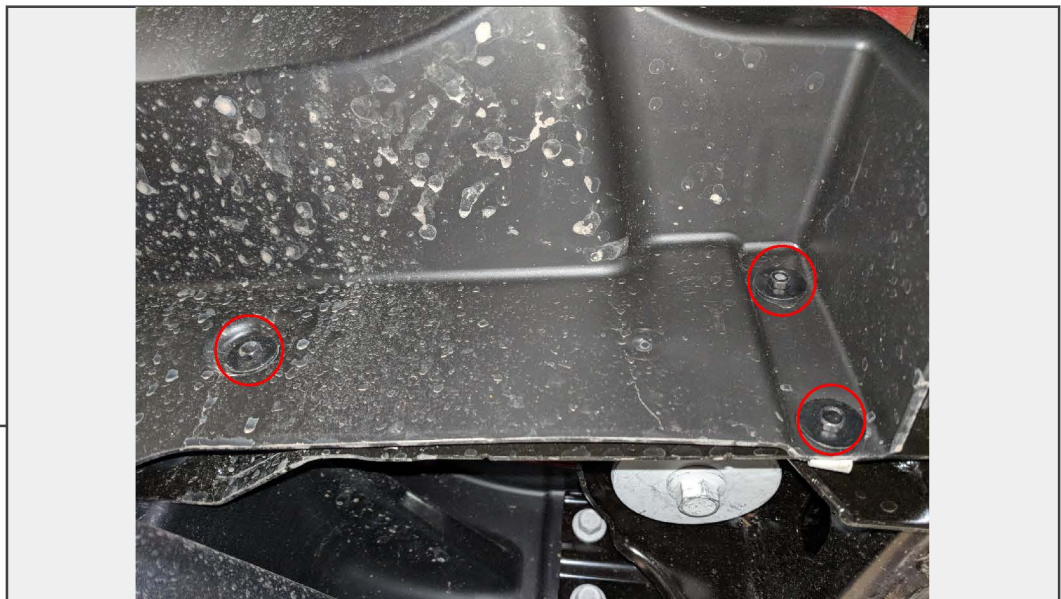
Locate and remove the (4) 21mm bolts securing the tow hook. Remove the tow hook from the vehicle.

STEP 3



From directly under the center of the vehicle, locate and remove the (2) 16mm bolts supporting the center of the bumper to the vehicle frame.

STEP 4



Locate and remove the (3) 8mm screws securing the splash shield to the bumper. Remove splash shield.

Repeat this step for the opposite side of the vehicle.

STEP 5



Once the splash shields are removed, locate and remove the (2) 16mm bolts securing the splash shield brackets to the bumper. Bumper will now be loose.

STEP 6



On the driver's side of the vehicle, locate and unplug the rear bumper wiring connector. Tilt up and remove the bumper from the vehicle.

STEP 7



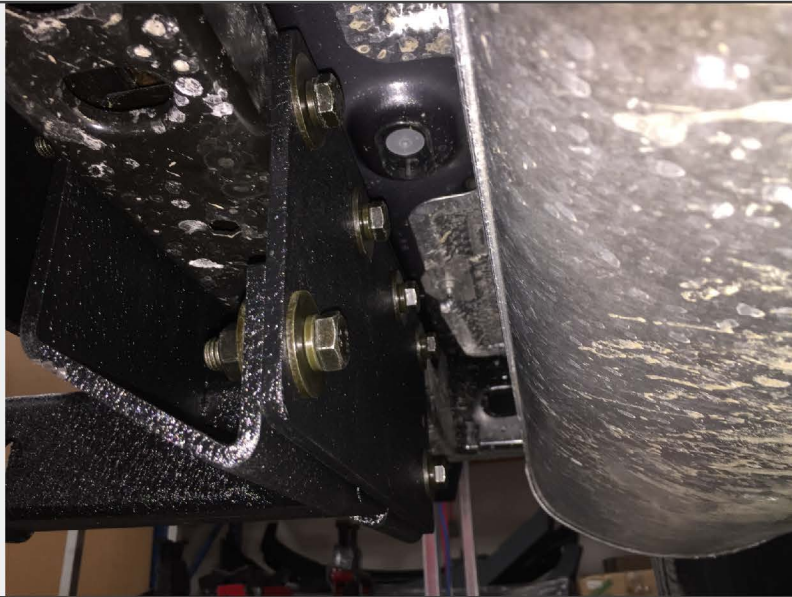
Insert the supplied (1) dual nut plate into the passenger side frame rail over the lower frame holes.

STEP 8



Install the bumper to the vehicle using the (4) 9/16 bolts, flat washers, and lock washers. Torque to 40 ft-lbs.

STEP 9



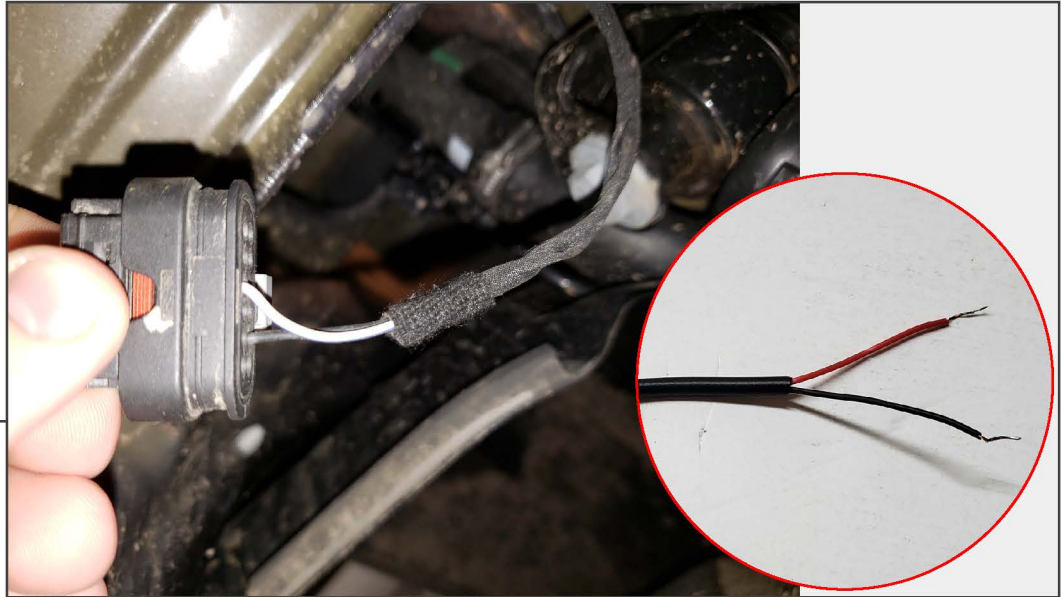
Install the hitch assembly and hitch plate using the (4) M12 x 120mm bolts, and (2) M12 x 40mm bolts, flat washers, and lock washers. Torque to 40 ft-lbs.

STEP 10



Install the upper block off plate, and license plate bracket using the (6) M10 screws.

STEP 11



Insert the (2) license plate light LEDs through the license plate bracket and attach with the supplied nuts and washers. Next, splice the LED wiring into the vehicle rear bumper harness using the diagram below. Test to ensure proper function.

<u>Vehicle Bumper Harness</u>	-	<u>LED Harness</u>
White (12V+)	-	White (+)
Black (-)	-	Black (-)

STEP 12



Re-install the spare tire to the vehicle. Install the (2) D-Rings to the bumper.

Installation is now complete.