



---

# FUEL TANK SKID PLATE

(2007-2018 WRANGLER JK - 4 DOOR)

---

## INSTALLATION INSTRUCTIONS

### CONTENTS

---

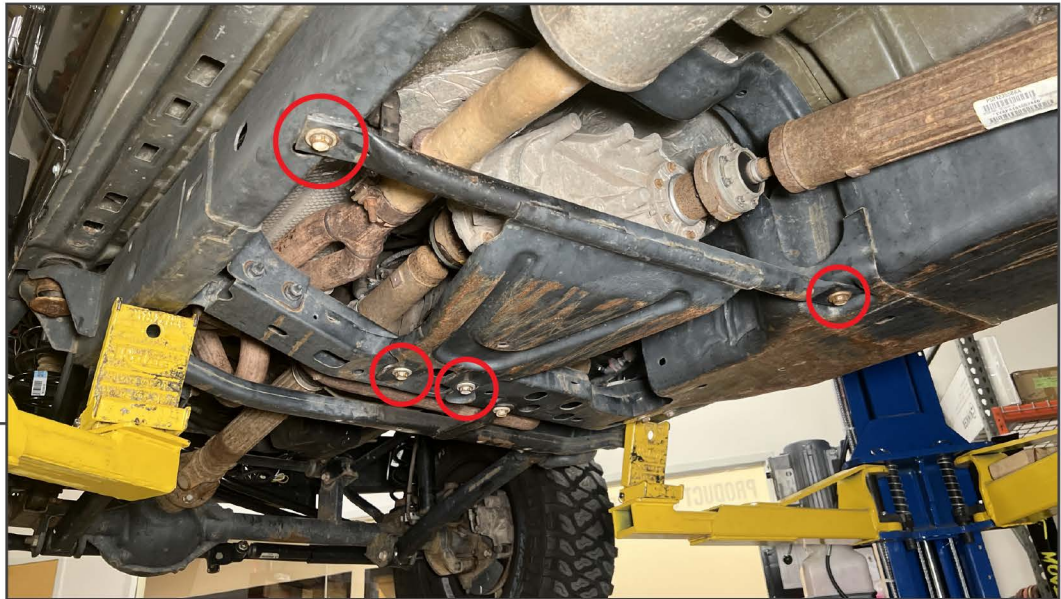
- (1) Front Skid Plate
- (1) Rear Skid Plate
- (1) Front Mounting Bracket
- (1) Center/Front Mounting Bracket
- (1) Center/Rear Mounting Bracket
- (1) Rear Mounting Bracket
- (1) Double Nut Plate
- (8) M12x1.75 x 25mm Hex Bolts
- (8) M12 Flat Washers

### TOOLS REQUIRED

---

- 18mm Socket
- Ratchet w/ Extension
- Floor Jack
- Jack Stands
- Spray Lubricant

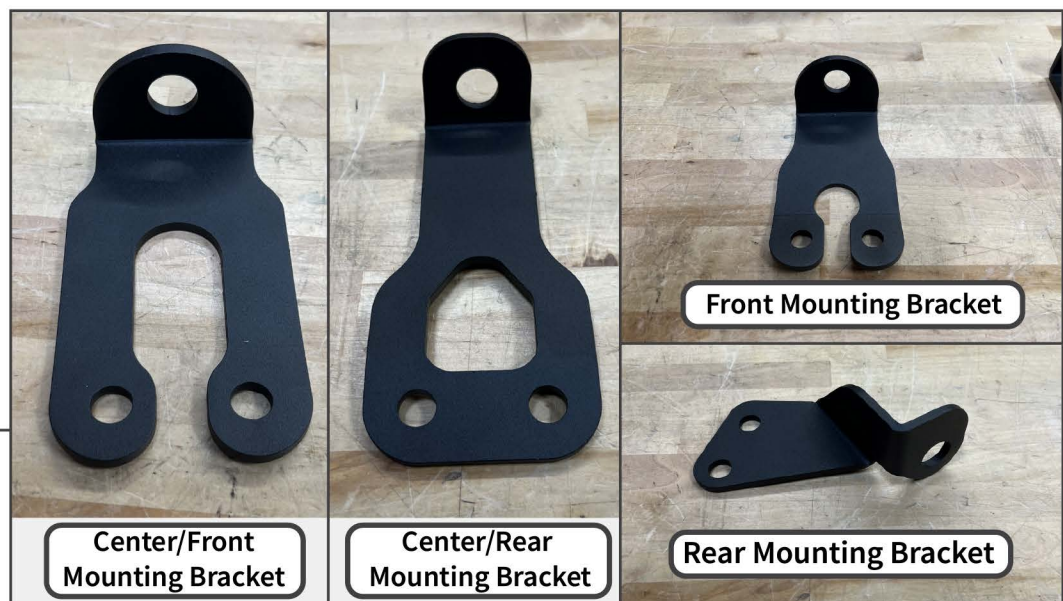
SKU # J239992

**STEP 1**

Before installation, it is recommended to drive the vehicle low on fuel to prevent excessive fuel tank weight.

Safely lift and support the vehicle to gain access to the under carriage of the vehicle.

Locate and remove (4) 18mm bolts from the transfer case skid plate.

**STEP 2**

At this time, it is recommended to place a floor jack under the fuel tank to allow easier removal of each fuel tank mounting bolt. The following steps will instruct bracket and skid plate installation without lowering the fuel tank. The skid plate will install over the original skid plate.

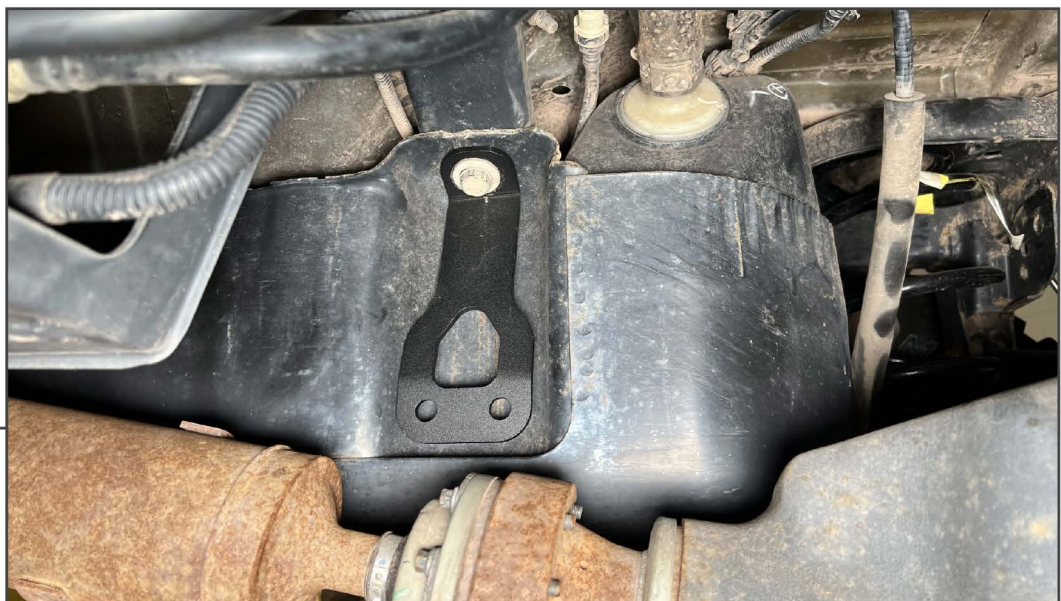
Identify the mounting brackets using the diagram above. The included brackets will mount to the frame using OEM fuel tank mounting bolts.



**STEP 3**

Locate and remove (2) 18mm bolts along the side mounts of the fuel tank. With the bolts removed, fit the appropriate included mounting brackets and loosely secure using the original (1) 18mm bolt per bracket.

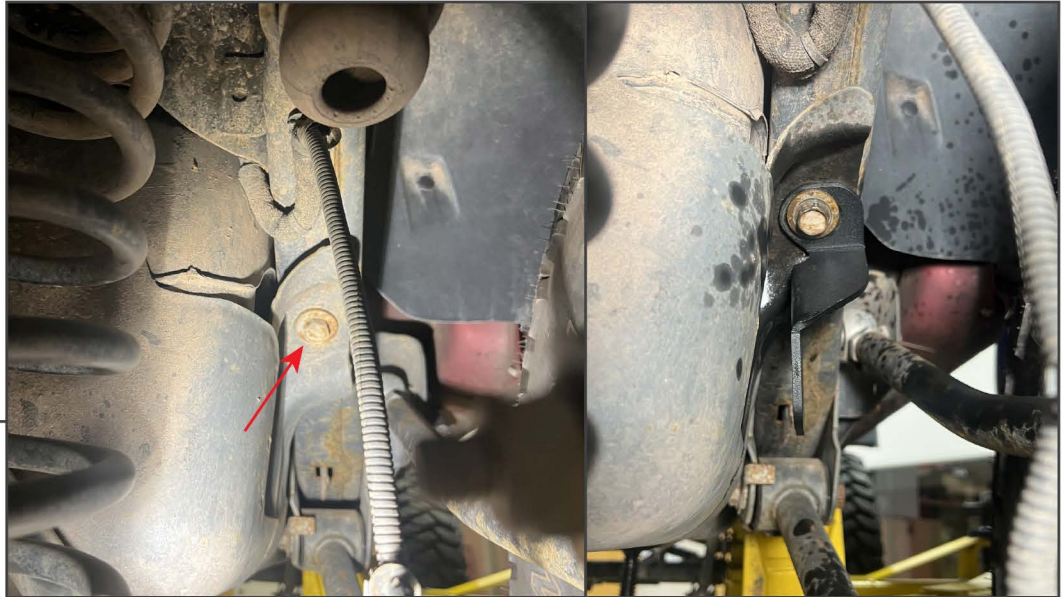
**Note:** The bolt must only be threaded a few turns during installation to allow bracket adjustments for skid plate alignment.

**STEP 4**

Locate and remove (1) 18mm bolt at the rear-most inner mounting point of the fuel tank. With the bolt removed, fit the appropriate included mounting bracket and loosely secure using the original (1) 18mm bolt.

**Note:** The bolt must only be threaded a few turns during installation to allow bracket adjustments for skid plate alignment.



**STEP 5**

Locate and remove (1) 18mm bolt at the rear mounting point of the fuel tank. With the bolt removed, fit the appropriate included mounting bracket and loosely secure using the original (1) 18mm bolt.

**Note:** The bolt retaining the brackets must only be threaded a few turns during installation to allow bracket adjustments for skid plate alignment.

**STEP 6**

Remove (4) 18mm bolts from the front and the outside side of the fuel tank.

Begin to lower the floor jack, the fuel tank may lower slightly until the bracket bolts hold the tank in place.

**STEP 7**

With a floor jack or helper, lift the front skid plate to the front of the vehicle fuel tank. Loosely secure the skid plate to the fuel tank using the original (3) 18mm bolts.

Ensure the previously installed mounting bracket is on the outside of the skid plate when the skid plate is initially mounted. Then, secure the skid plate to the bracket using (2) M12 bolts and (2) M12 flat washers.

**STEP 8**

With a floor jack or helper, lift the rear skid plate to the rear of the vehicle fuel tank. Loosely secure the skid plate to the vehicle frame using (1) original 18mm bolt and to the previously mounted brackets using (6) M12 bolts and (6) M12 flat washers. See Step 8 cont. on next page.

Ensure the previously installed mounting brackets are on the outside of the skid plate when the skid plate is initially mounted.



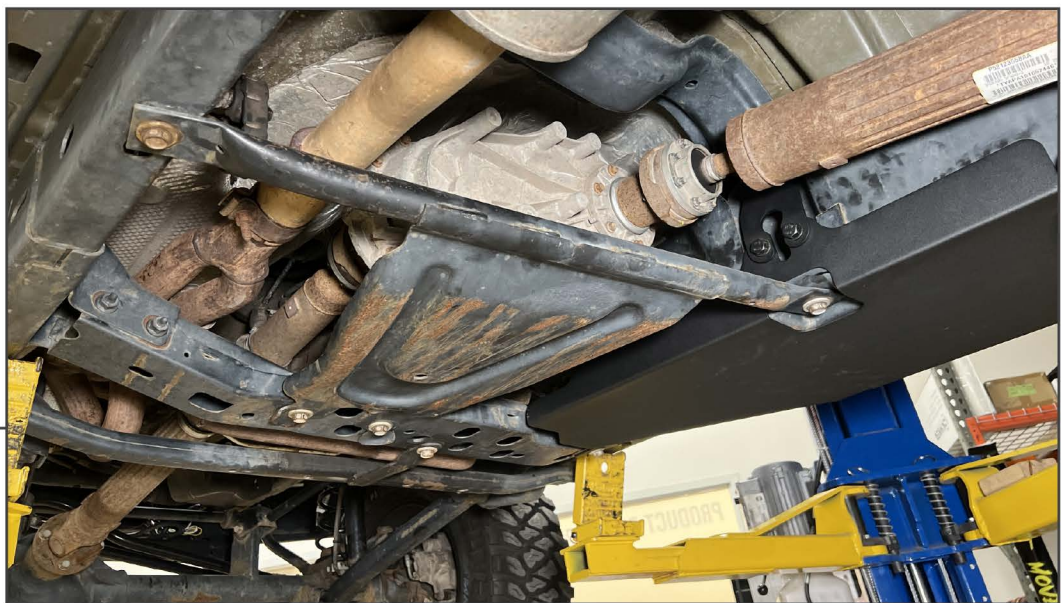
---

**STEP 8**  
**Cont.**

**Side Brackets:** Using the provided (4) M12 bolts and (4) M12 flat washers, loosely secure the side mounting brackets to the skid plate. The skid plate has welded M12 nuts to secure into place. These brackets may be best tightened with the suspension loaded for additional driveshaft clearance.

**Rear Bracket:** Fit (1) M12 double nut plate behind the skid plate, use the tab to help align the nuts to the bolt holes. Align the skid plate and bracket together, and loosely secure using (2) M12 bolts and (2) M12 flat washers.

---

**STEP 9**

Re-install the vehicle transfer case skid plate using the original hardware.



---

**STEP 10**

Ensure all fuel tank and skid plate hardware is fully tightened.

Installation is now complete.