

# ORACLE LIGHTING

## INTEGRATED WINDSHIELD ROOF LED LIGHT BAR SYSTEM

2018-'25 JEEP JL/JT ORACLE PART# 5917-023

### WHAT YOU NEED TO KNOW:

WATCH THE DIY INSTALLATION VIDEO GUIDE:



WATCH  
THE  
VIDEO

<https://vimeo.com/931183063>



### TOOLS NEEDED



6MM HEX KEY



10MM/14MM WRENCH

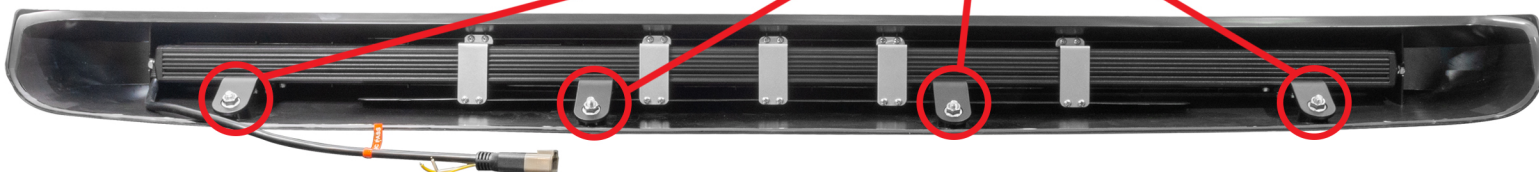
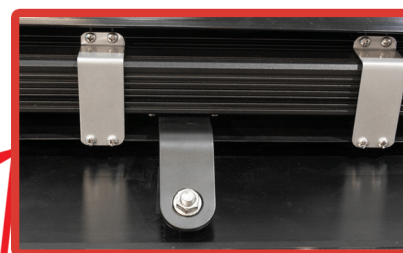


1/8" TO 7/16" DRILL BIT



CRIMP TOOL & BUTT CONNECTORS

Installation can be completed with basic tools including a Hex Key set, box wrench set, drill bit set and a crimp tool with crimp connectors. The installation can be completed in your driveway in under one hour. Before beginning the installation process you will need to remove the (4) 10MM protective nuts that will be attached to the housing of your light bar. See photo for reference.



### OPTIONAL WIRING ACCESSORIES:

The light bar is designed to work with the factory AUX switches if your vehicle is not equipped with the factory AUX switches you can add optional wiring harnesses to ease installation. We also offer full wireless controller options. (SOLD SEPARATELY).



FACTORY AUX  
WIRING HARNESS  
PN 5899-504



SWITCHED  
WIRING HARNESS  
PN 5897-504



TRIGGER 4 PLUS  
PN 2100



TRIGGER 6 SHOOTER  
PN 3001

### PACKAGE CONTENTS:

Package include hardware for installing the blind rivets (Riv Nut) for mounting the light bar. The nut setter tool is used to compress the threaded rivets. The Hex Key holds the nut setter while the 14MM wrench turns the collar to compress the rivet. The included bolts mount into the compressed rivets.



ORACLE  
LIGHTING

[www.oraclelights.com](http://www.oraclelights.com)

© 2025 ORACLE LIGHTING

4401 Division St.  
Metairie, LA 70002  
P: 1 (800) 407-5776  
F: 1 (800) 407-2631