

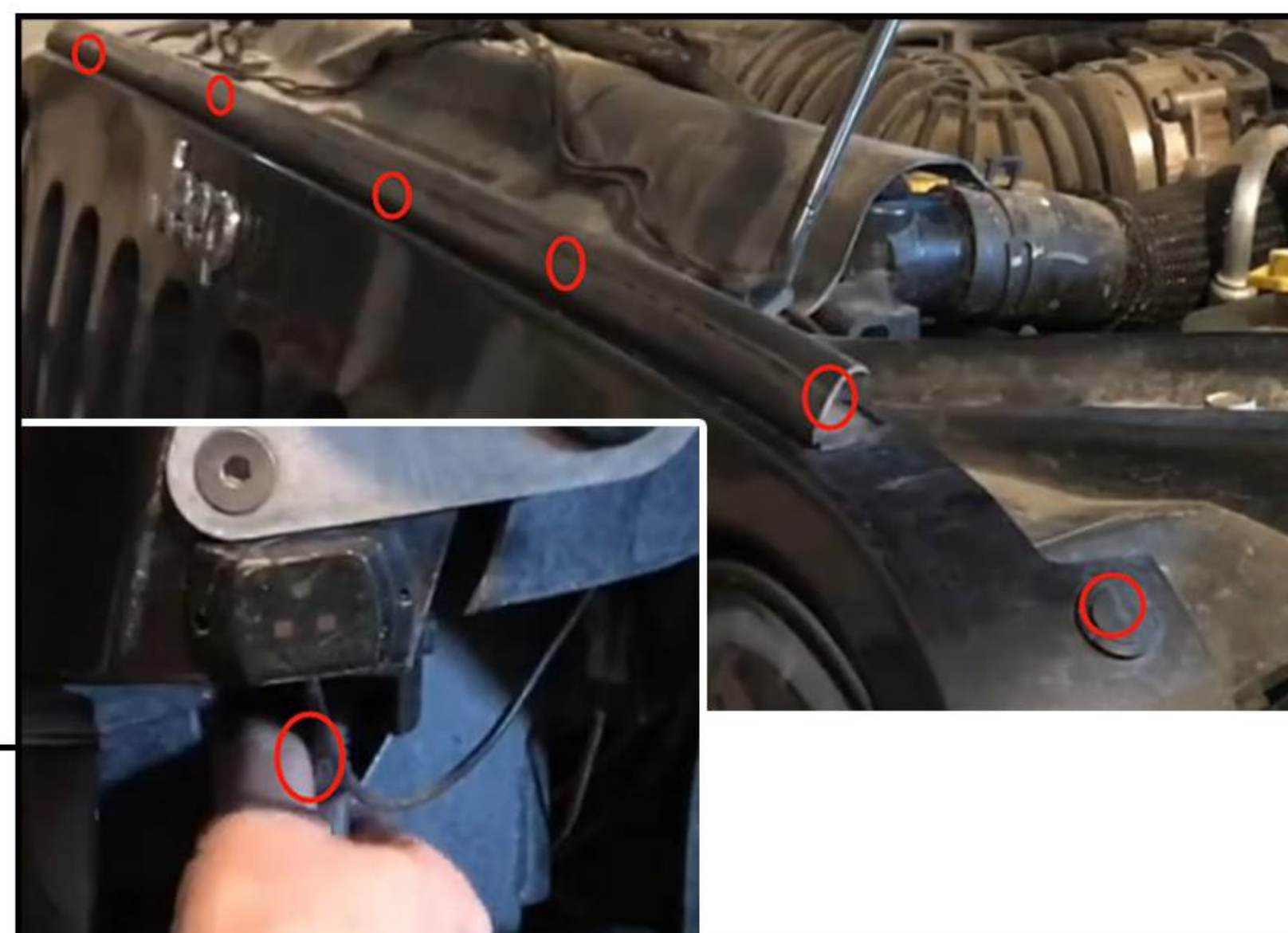


Installation Guide

Armor Grille
For 2007-2018 Wrangler JK

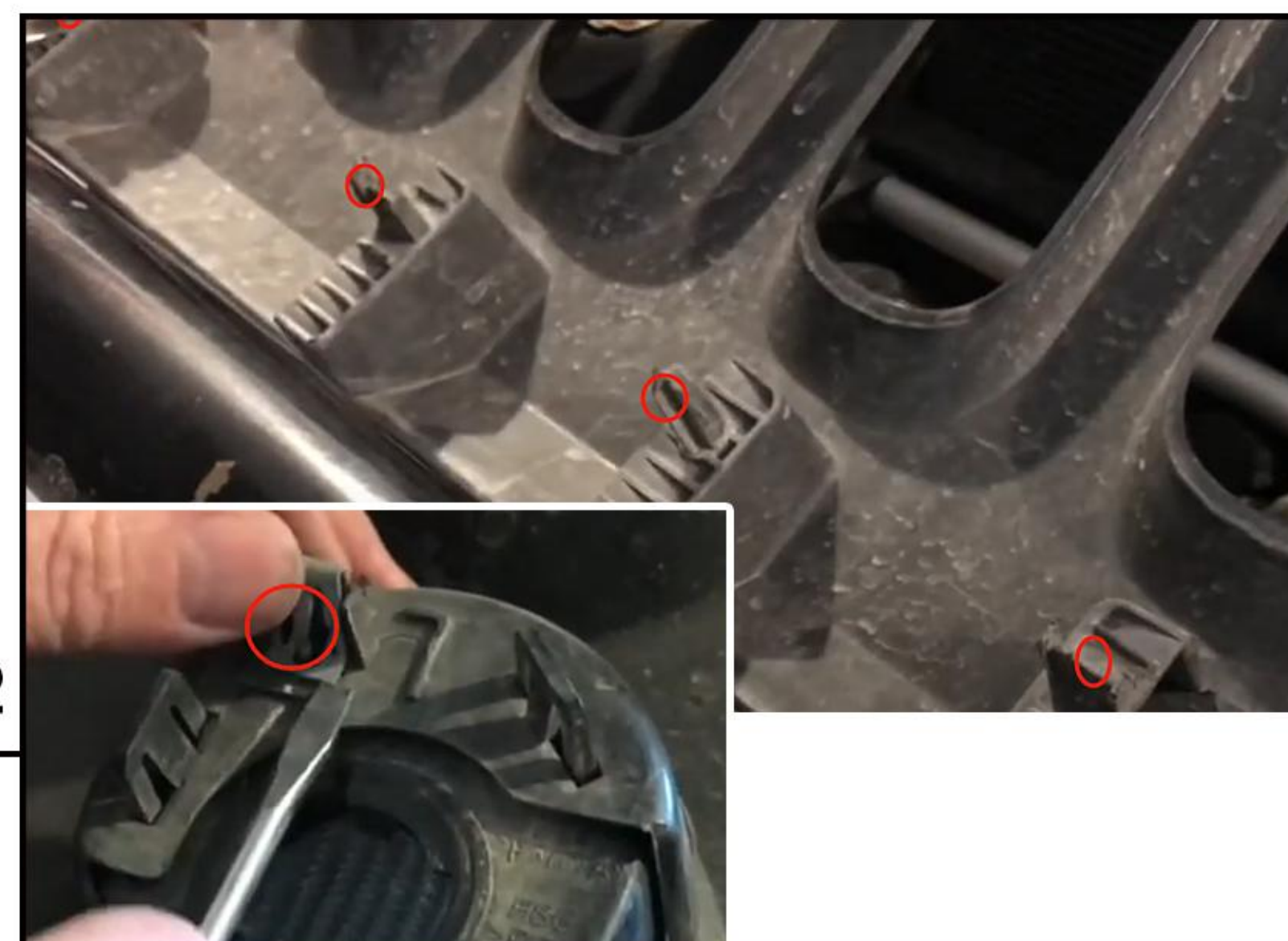
SKU # AMJPAA00133 & AMJPAA00135 & AMJPAA00136

STEP 1



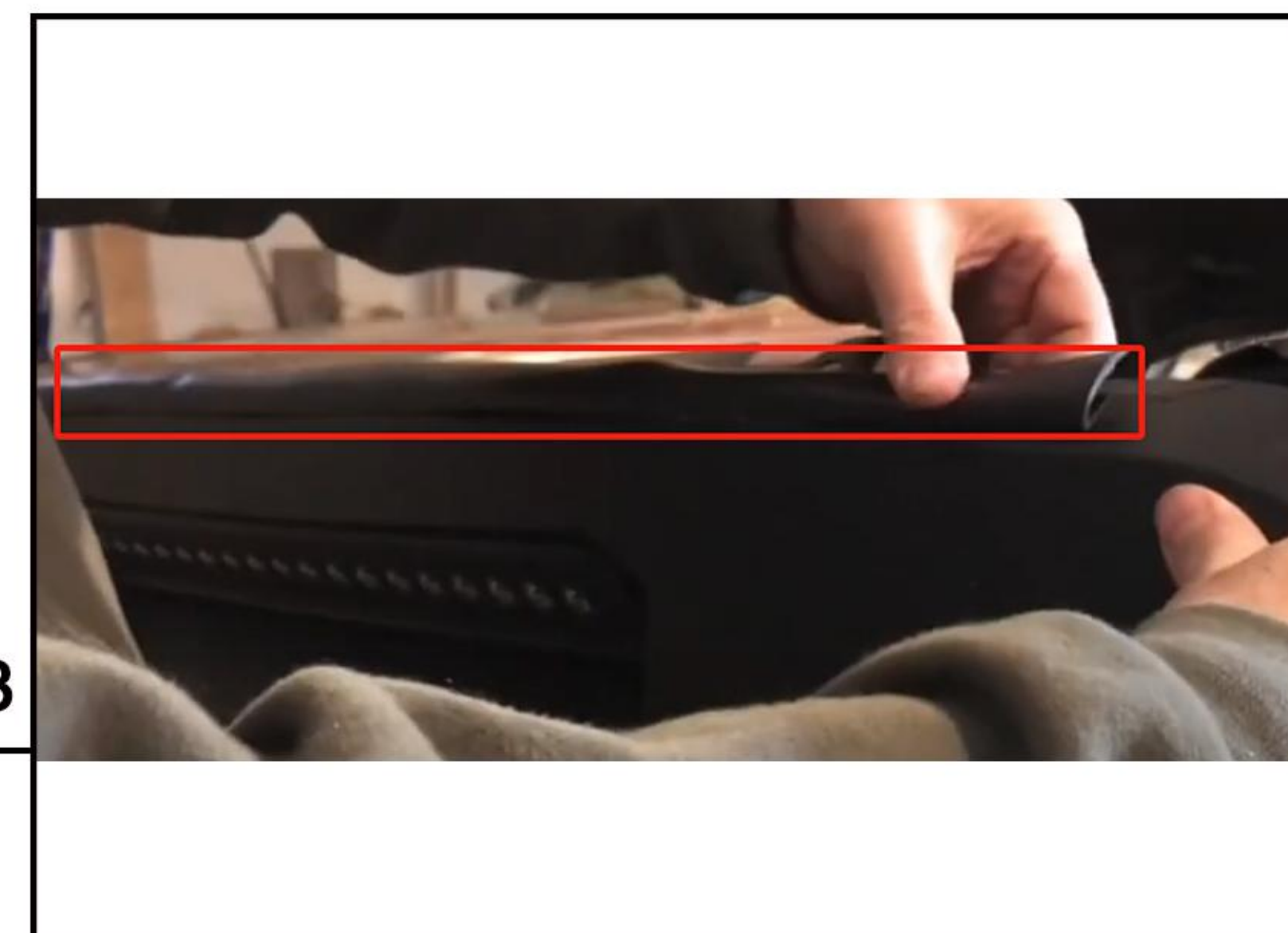
Pop the hood,remove the 6 push clips with a panel removal tool;Unplug the turn signals and pull the grille out of the car.

STEP 2



Remove four pop-in inserts on the bottom of the factory grille with a small screw driver. Remove the retaining clip from the turn signal socket and pull out the turn signal. (Or you can use the new clips that come with the new grille)

STEP 3



Apply the supplied weather stripping accross the top of the grille.Put all the clips on the grille and reinsert the turn signal cups.

STEP 4



Align the grille to the car and get the retainer clips in the right position.Connect the red and black wire of the light bar to ACC and negative of the battery.

STEP 5



Follow the step 1 in reverse order to install the grille to complete the installation.