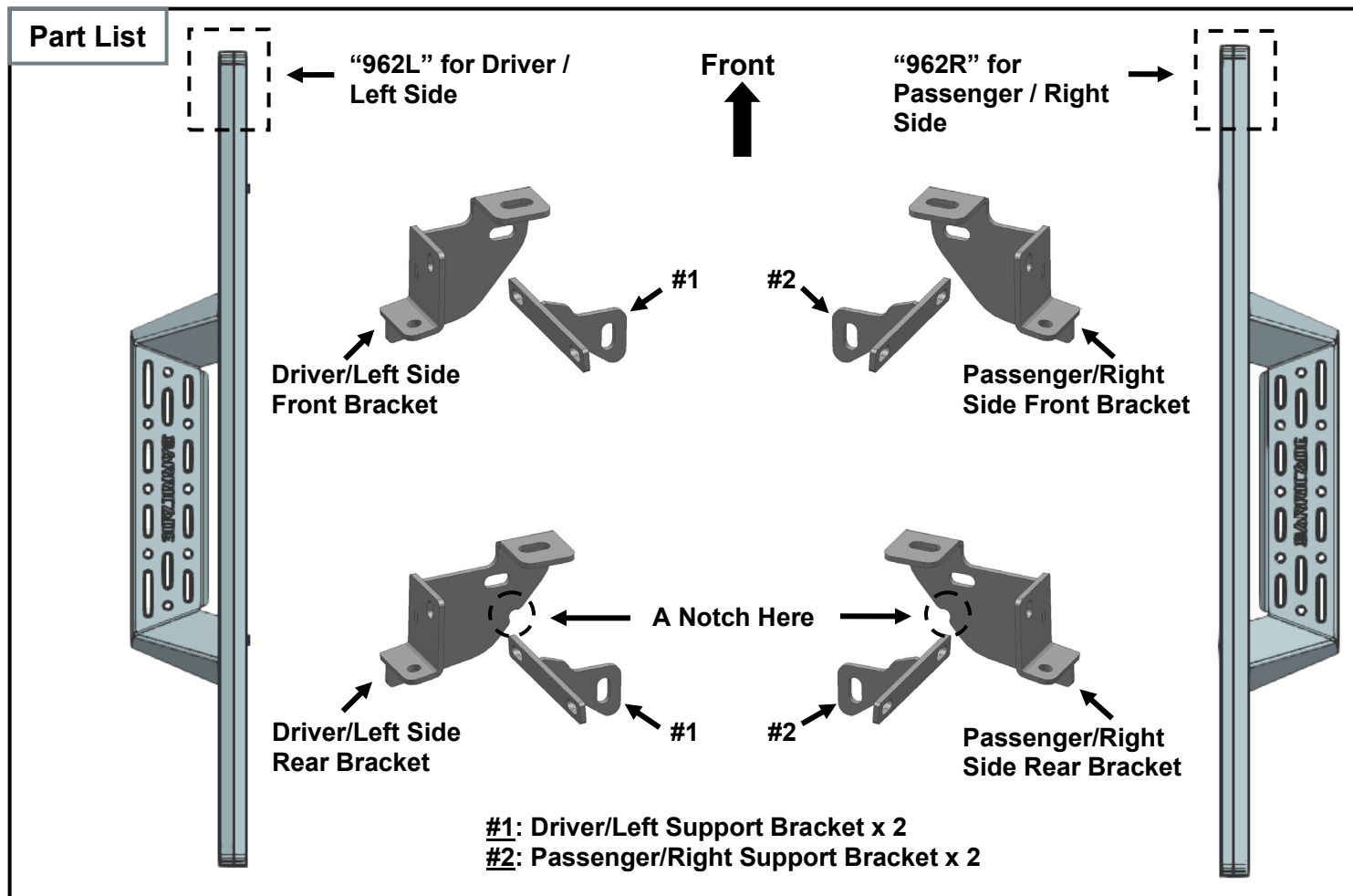
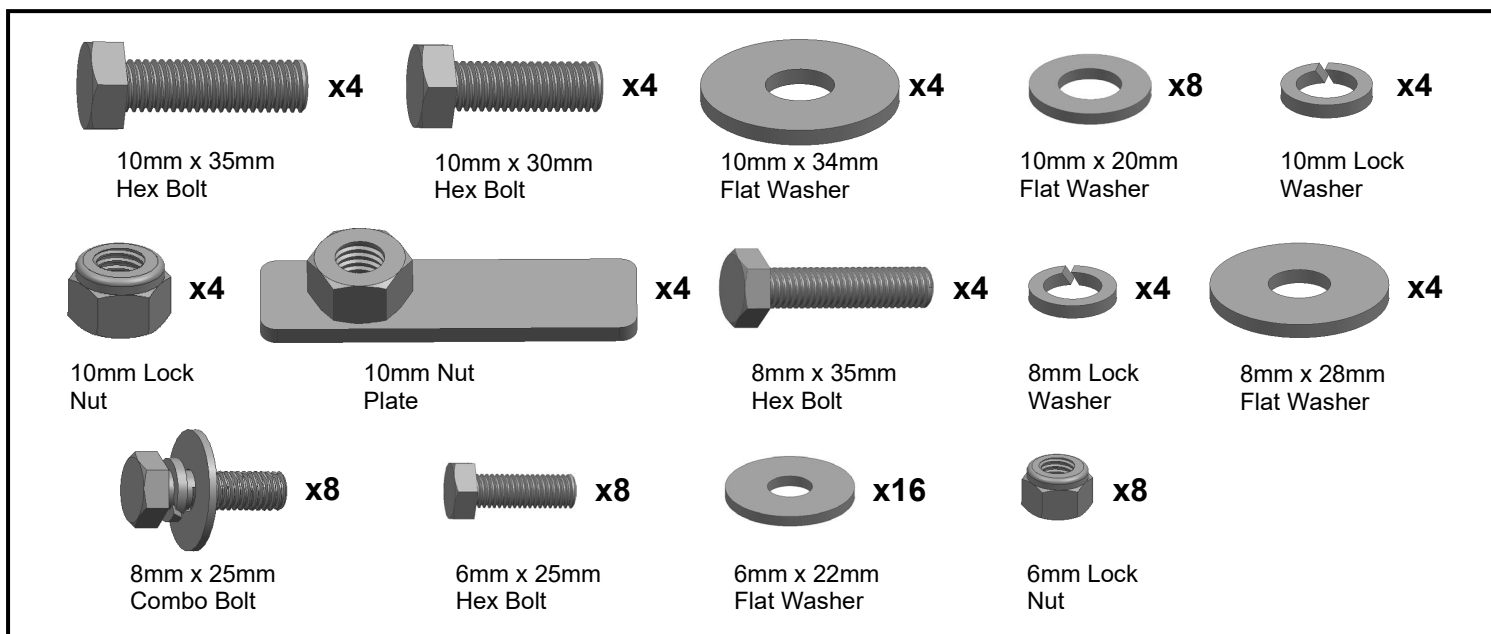




Canyon Drop Steps
07-18 Wrangler JK 2 Door
SKU # J236887





PLEASE NOTE THAT THE FOLLOWING PICTURES ARE BASED ON THE DRIVER SIDE INSTALLATION

STEP 1

Start installation toward the front of the Driver/Left side of the vehicle, Locate the front and rear mounting locations (**Fig 1**).

FIG 1



(Fig 1) Driver/Left mounting locations

STEP 2

Determine if the vehicle has an open floor panel or a threaded hole in the floor panel

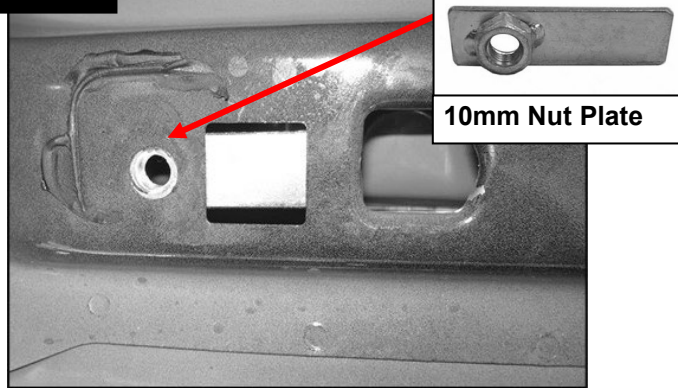
(1) Vehicles with open mounting location:

- a. Insert (1) 10mm Nut Plate into the large square opening in the floor panel. Line up the threaded nut with the hole in between the pair of holes on the pinch weld, (**Fig 2**).
- b. Select the Driver/Left Front Mounting Bracket. **NOTE:** There is a small notch at the **Rear** of the Rear Brackets. Please identify the Front Bracket and Rear Bracket according to the Part List.
- c. Attach the Bracket to the Nut Plate with (1) **10mm x 35mm** Hex Bolt, (1) 10mm Lock Washer and (1) **10mm x 34mm** Flat Washer, (**Fig 3**). Do not tighten hardware.

(2) Vehicles with factory threaded hole in floor panel:

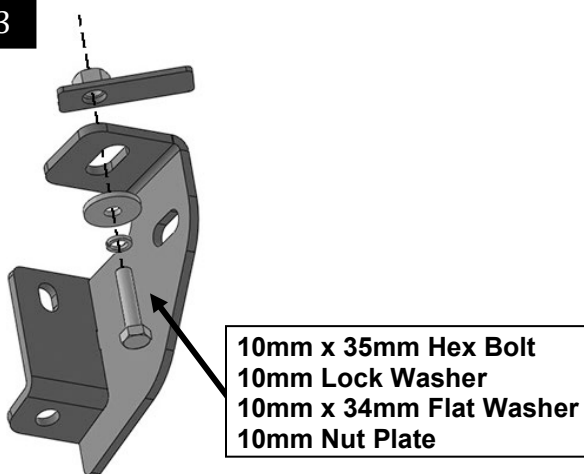
- a. Select the Driver/Left Front Mounting Bracket. Attach the Bracket to the front mounting location (**Fig 4**) with (1) 8mm Hex Bolt, (1) 8mm Lock Washer and (1) 8mm Flat Washer, (**Fig 5**). Do not tighten hardware.

FIG 2



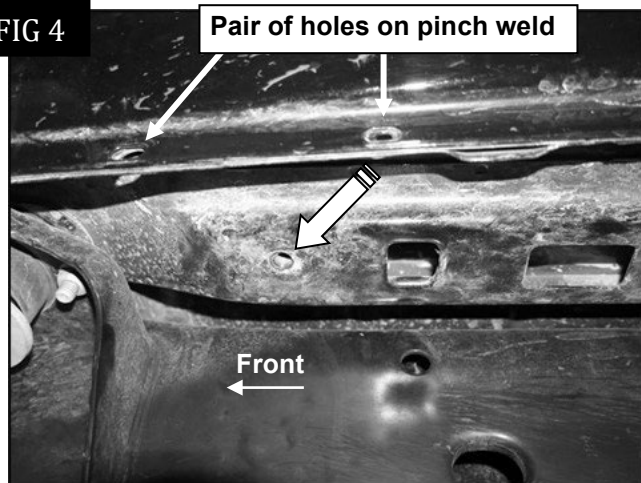
(Fig 2) Driver/Left front mounting location (Models with open mounting location shown)

FIG 3



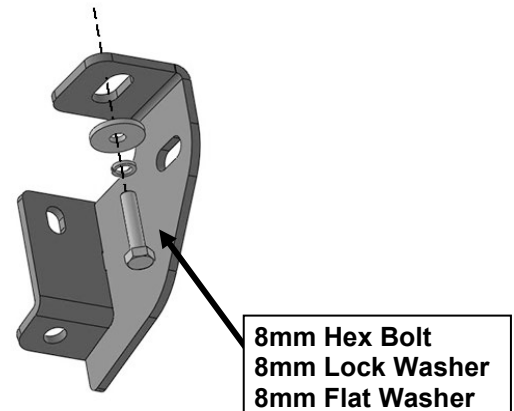
(Fig 3) Attach the Driver/Left Front Mounting Bracket to the Nut Plate

FIG 4



(Fig4) Driver/Left front mounting location (Models with threaded insert shown)

FIG 5

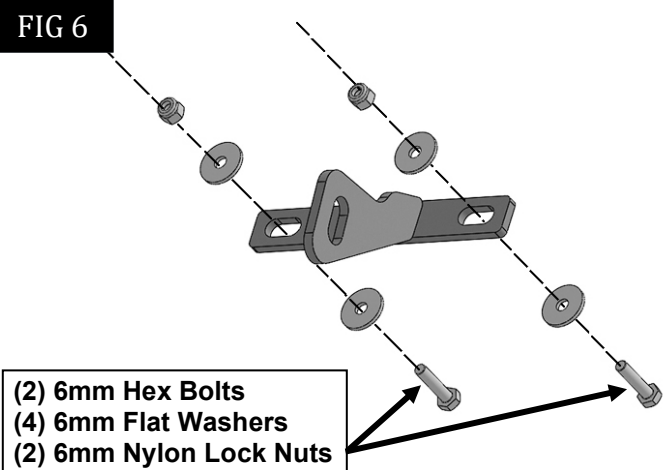


(Fig5) Attach the Driver/Left Front Mounting Bracket to the Threaded Hole

STEP 3

Select (1) Driver/Left Support Bracket (#1). Attach the Support Bracket to the pinch weld with (2) 6mm Hex Bolts, (4) 6mm Flat Washers and (2) 6mm Nylon Lock Nuts, (Fig 6).

FIG 6

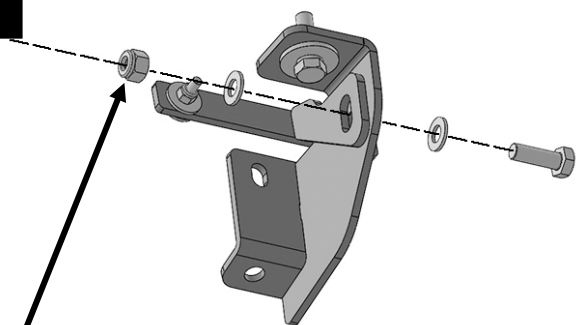


(Fig 6) Attach (1) Driver/Left Support Bracket (#1) to the (2) holes in the pinch trim in the front location

STEP 4

Attach the Support Bracket to the Mounting Bracket with (1) **10mm x 30mm Hex Bolt**, (2) **10mm x 20mm Flat Washers** and (1) **10mm Nylon Lock Nut**, (**Fig 7**). Do not tighten hardware.

FIG 7



10mm x 30mm Hex Bolt
(2) 10mm x 20mm Flat Washers
10mm Nylon Lock Nut

(Fig 7) Attach (1) Driver/Left Support Bracket (#1) to the Front Mounting Bracket

STEP 5

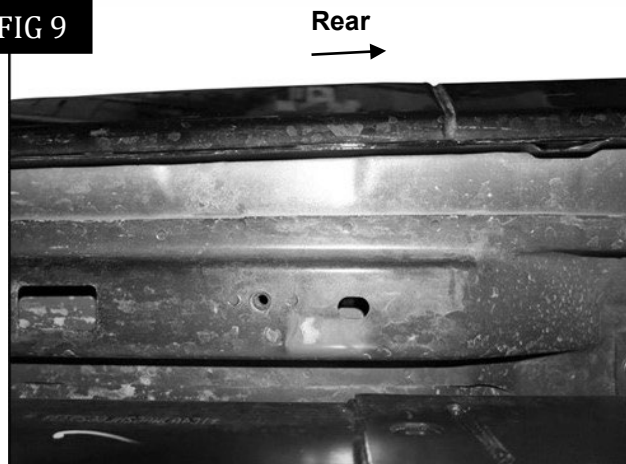
Repeat **Steps 2 - 4** to attach the Driver/Left Rear Mounting Bracket and Support Bracket to the rear location, (**Figs 8-9**). **NOTE:** There is a small notch at the **Rear** of the Rear Brackets. Please identify the Brackets according to this, (**Fig 10**). Do not tighten hardware.

FIG 8



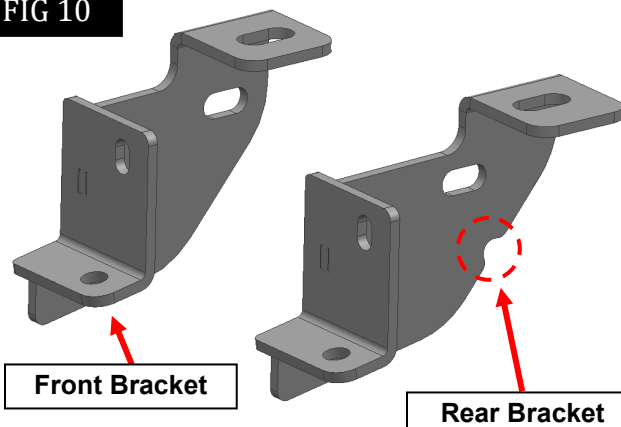
(Fig 8) Driver/Left rear mounting location (Models with open mounting location shown)

FIG 9



(Fig 9) Driver/Left rear mounting location (Models with threaded insert shown)

FIG 10

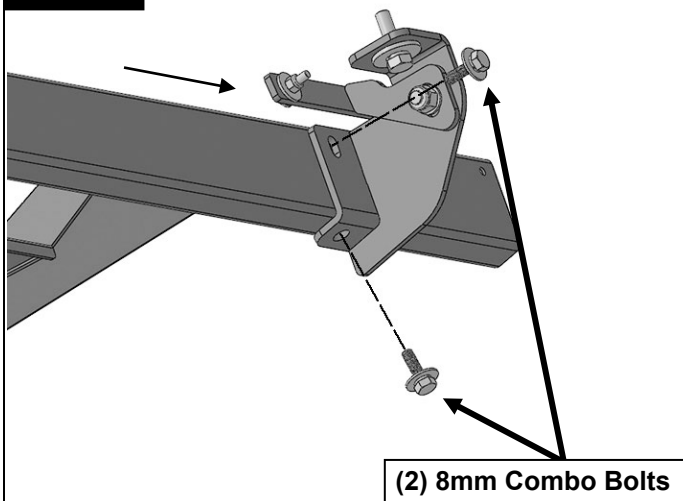


(Fig 10) Differentiate the Front and Rear Brackets

STEP 6

Select the Driver/Left Running Board. **NOTE:** The Driver/Left Running Board will have a "**962L**" on the front. Attach the Running Board to the Mounting Brackets with (4) 8mm Combo Bolts, (**Fig 11**). **IMPORTANT:** Do not slide Running Board on the Mounting Bracket cradles, or damage to the finish may result. Do not tighten hardware.

FIG 11



(Fig 11) Attach the Driver/Left Running Board to the Mounting Brackets

STEP 7

Level and adjust the Running Board and tighten all hardware.

STEP 8

Repeat **Steps 2—7** to attach Passenger/Right Running Board.

STEP 9

Do periodic inspections to the installation to make sure that all hardware is secure and tight.

Attention

To protect your investment, do not use any type of polish or wax that may contain abrasives that could damage the finish.

Mild soap may be used also to clean the Running Boards.