



DOOR HINGE SET

(2007-2018 WRANGLER JK - 4 DOOR)

INSTALLATION INSTRUCTIONS

CONTENTS

(2) LH Inner Upper Hinge [L1]
(2) LH Inner Lower Hinge [L2]
(2) RH Inner Upper Hinge [R1]
(2) RH Inner Lower Hinge [R2]
(20) M8x1.25 x 25mm Flange Bolts
(4) LH Outer Hinges
(4) RH Outer Hinges
(16) M8x1.25 x 20mm Tapered Allen Bolts

TOOLS REQUIRED

13mm Socket
T-50 Torx Socket
5mm Allen Key/Socket
Ratchet
Saw Horse

STEP 1



****Removing and installing door hinges to the vehicle will effect the door alignment to the vehicle. Aligning the door properly can be difficult, and this can lead to vehicle damage if done incorrectly. Professional installation is recommended by a qualified auto body shop.**

Remove (2) T-50 Torx nuts from the bottom of the exterior door hinges.

STEP 2



Unplug the door wiring harness from the vehicle. Then, lift the door limiting strap from the door.

Carefully lift the door away from the vehicle, and set on a soft workable surface.

STEP 3



Remove (2) T-50 Torx bolts from each door hinge. Lift and remove the hinge from the vehicle.

Note: Some vehicles will have corrosion under the hinge. It is recommended to properly clean and treat the corrosion from the door, if applicable.

STEP 4



Loosely secure the new hinge into place on the door using (2) M8 tapered Allen bolts.

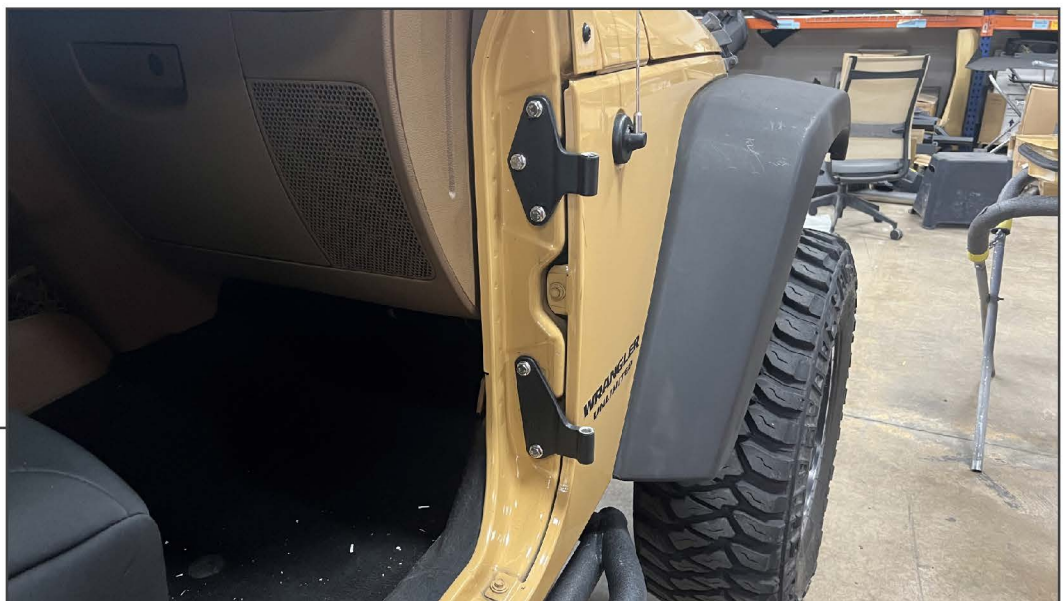
STEP 5



Remove (3) 13mm bolts from the upper inner door hinge. Lift and remove the hinge from the vehicle.

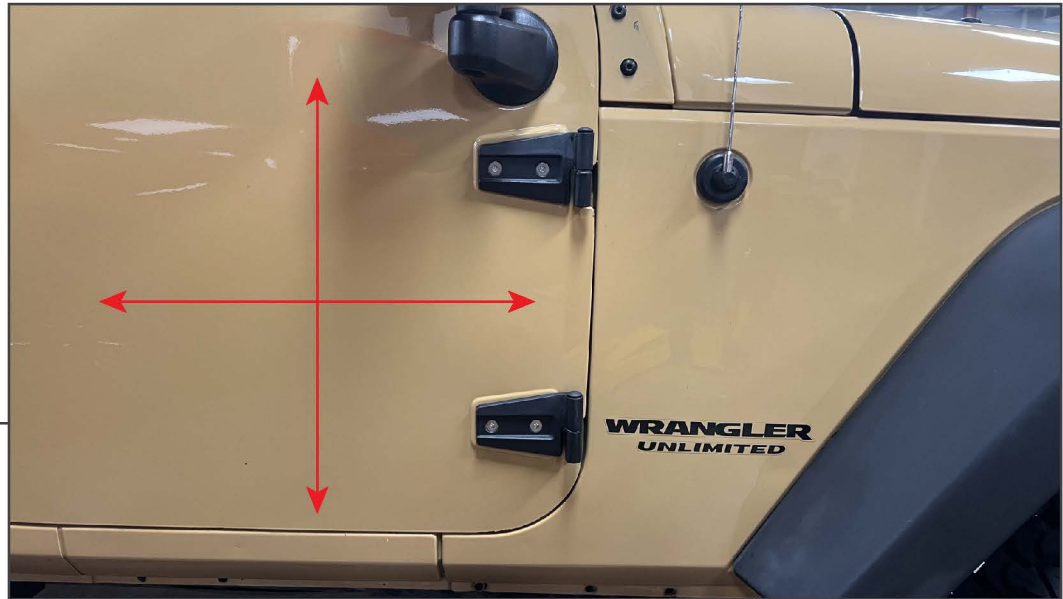
Remove (2) 13mm bolts from the lower inner door hinge. Lift and remove the hinge from the vehicle.

STEP 6



Loosely secure the new upper inner hinge into place on the vehicle using (3) M8 flange head bolts.

Loosely secure the new lower inner hinge into place on the vehicle using (2) M8 flange head bolts.

STEP 7

Lift the door to the vehicle and carefully place the door onto the new hinges. Verify clearances between the hinges and the door to prevent door damage. Slowly close the vehicle door, checking clearances and body gaps around the door, while ensuring door striker alignment.

Adjust the door to best fit the vehicle, then tighten the inner and outer door hinges into place to secure the alignment.

STEP 8

Repeat steps 1-7 for all remaining door hinges. Install the OEM T-50 nuts onto the bottom of the new hinges to lock the door pins.

Installation is now complete.