



DUAL STEERING STABILIZER

(2007-2018 WRANGLER JK)

INSTALLATION INSTRUCTIONS

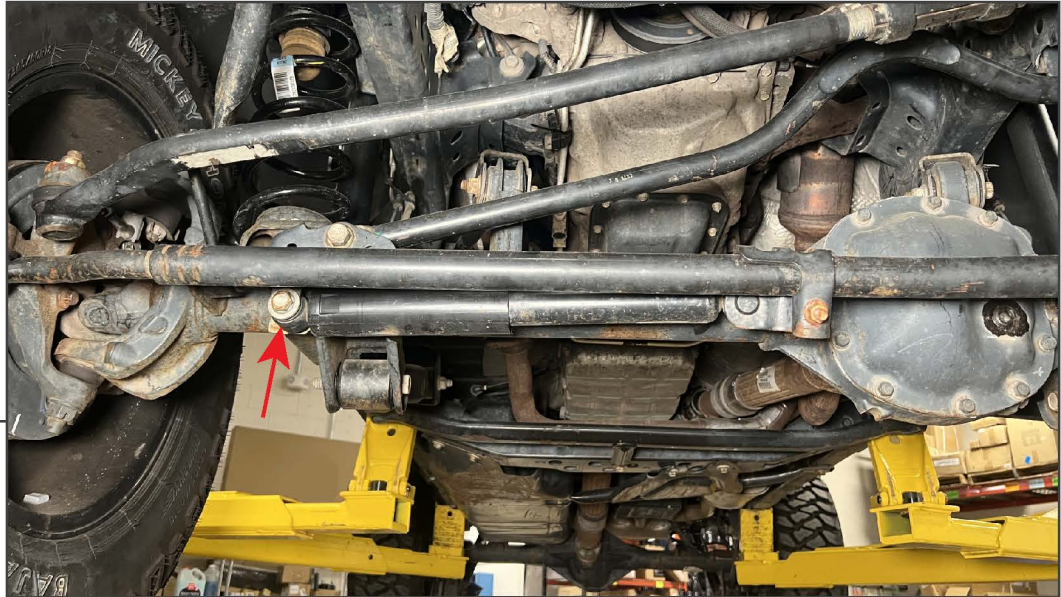
CONTENTS

- (1) Axle Mounting Bracket
- (1) Stabilizer Clamp Bracket
- (1) LH Stabilizer Mount
- (1) RH Stabilizer Mount
- (2) Tie Rod Mount Brackets
- (4) 1/2-13 x 2.5mm Bolts
- (6) 1/2-13 Flat Washers
- (4) 1/2-13 Lock Nuts
- (4) Small U-Bolts
- (2) Large U-Bolts
- (12) 3/8-16 Lock Nuts

TOOLS REQUIRED

- 15mm, 18mm, 19mm Socket/Wrench
- Ratchet
- Pry Bar
- Floor Jack
- Jack Stands

SKU # J216443



STEP 1

Safely lift and support the front of the vehicle using a floor jack and jack stands.

Remove the steering stabilizer from the axle mount by removing (1) 18mm bolt and flag nut.

Note: Hardware will not be reused.



STEP 2

Remove the steering stabilizer from the tie rod by removing (1) 15mm nut from the stabilizer mount bracket.

Using a pry bar, pry the steering stabilizer mounting bracket ears away from the tie rod. Once the ears are separated, slide the steering stabilizer assembly towards the vehicle wheel and remove the assembly at the narrower section of the tie rod assembly.

Note: Mounting bracket and hardware will not be reused.



STEP 3

Loosely install the (1) axle mounting bracket to the axle tube using (2) large U-Bolts and (4) 3/8-16 flange nuts.



STEP 4

Fit (1) 1/2-13 bolt into the stabilizer mount with the bolt facing up to act as a steering stabilizer stud. Then, fit the stabilizer mount to the included tie rod bracket, and loosely secure the assembly to the tie rod using (2) small U-Bolts and (4) 3/8-16 flange nuts.

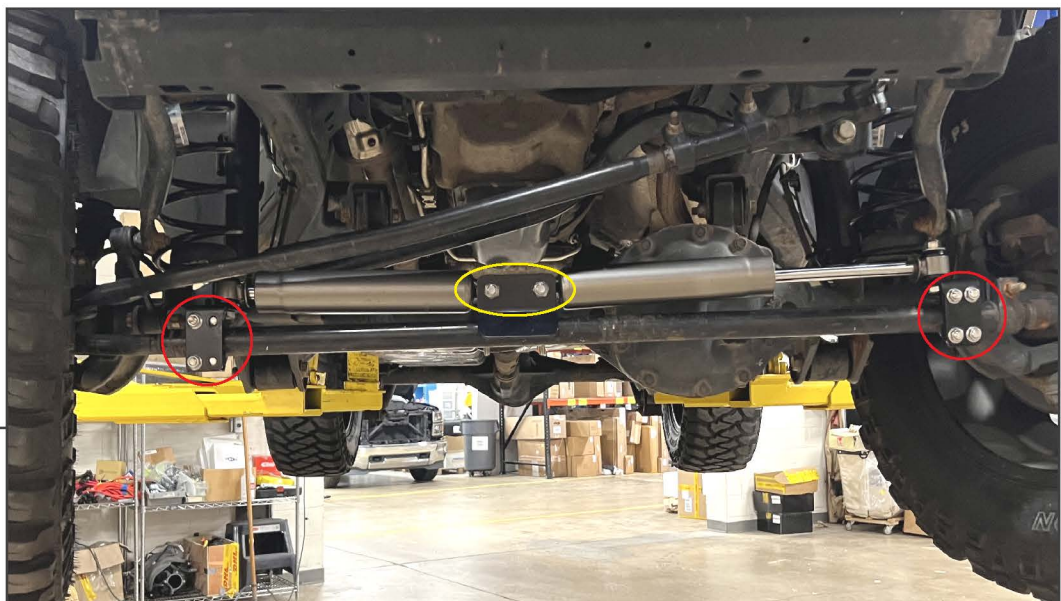
Repeat this step for the opposite side of the vehicle.



STEP 5

Fit (2) 1/2-13 bolts and (2) 1/2-13 flat washers into the axle mounting bracket. With the wheels straight, measure the distance from the axle mounting bracket bolts to the tie rod mounting bracket studs. Each side will measure approximately 16".

Move each tie rod mounting bracket as necessary to achieve the even measurements and tighten the tie rod brackets into place.



STEP 6

Fit each steering stabilizer onto the tie rod mounting studs, and loosely secure using (1) 1/2-13 flat washer and (1) 1/2-13 lock nut per side.

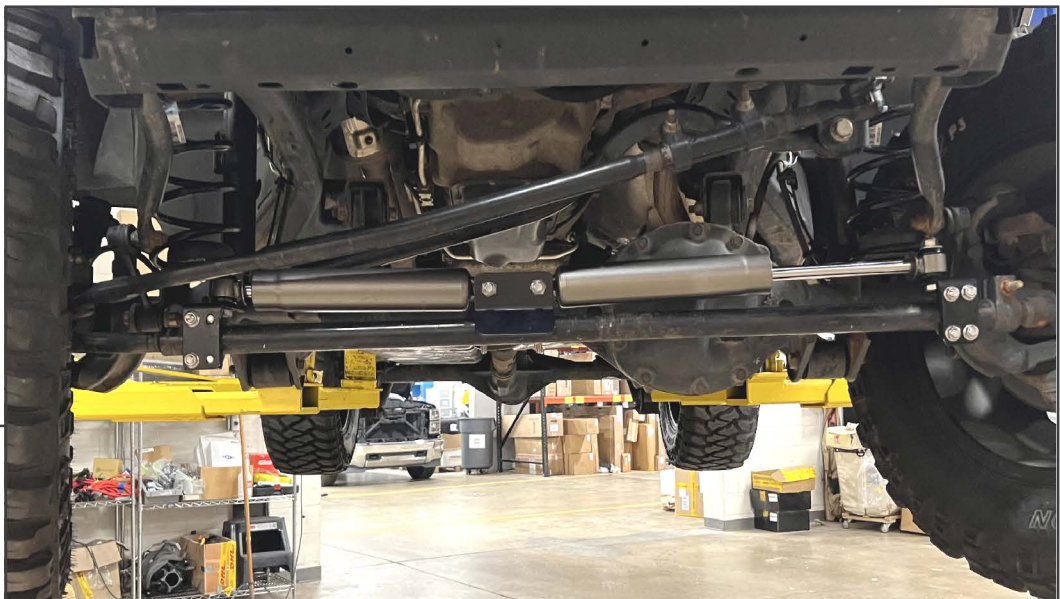
Fit the stabilizers onto the axle mounting bracket bolts. Fit the included stabilizer clamp bracket onto the bolts, and loosely secure using (2) 1/2-13 and (2) 1/2-13 flat washers.

STEP 7



Begin tightening the stabilizer assembly by lifting the bracket adequately clearance the tie rod. Tighten the (4) 3/8-16 flange nuts evenly until the bracket is secure.

STEP 8



Tighten the (4) 1/2-13 bolts/nuts to secure the stabilizers to the brackets. Tighten the tie rod mounting brackets to the tie rod using the (8) 3/8-16 flange nuts.

With the vehicle on the ground, turn the wheel lock to lock to verify the shocks are the correct length. Adjust the stabilizer mounting points, if necessary to allow full shock travel/compression.

Installation is now complete.