



HEAVY DUTY OE STYLE SIDE STEPS

(2007-2018 WRANGLER JK - 4 DOOR)

INSTALLATION INSTRUCTIONS

CONTENTS

(2) HD Side Steps
(1) LH Front Step Bracket [DF]
(1) LH Center Step Bracket [DC]
(1) LH Rear Step Bracket [DR]
(1) RH Front Step Bracket [PF]
(1) RH Center Step Bracket [PC]
(1) RH Rear Step Bracket [PR]
(3) LH Rocker Panel Brackets [D]
(3) RH Rocker Panel Brackets [P]
(6) Stud Brackets
(6) M10x1.50 x 35mm Bolts
(6) M10x1.50 x 30mm Bolts
(12) M10 Lock Washers
(18) M10 Flat Washers
(6) M10 Nuts
(6) M10 Nut Plates
(6) M8x1.25 x 35mm Bolts
(6) M8 Lock Washers
(18) M8 Flat Washers
(12) M8 Lock Nuts
(12) M6x1.00 x 25mm Bolts
(24) M6 Flat Washers
(12) M6 Lock Nuts

TOOLS REQUIRED

10mm, 13mm, 16mm, 17mm
Sockets/Wrenches
Ratchet

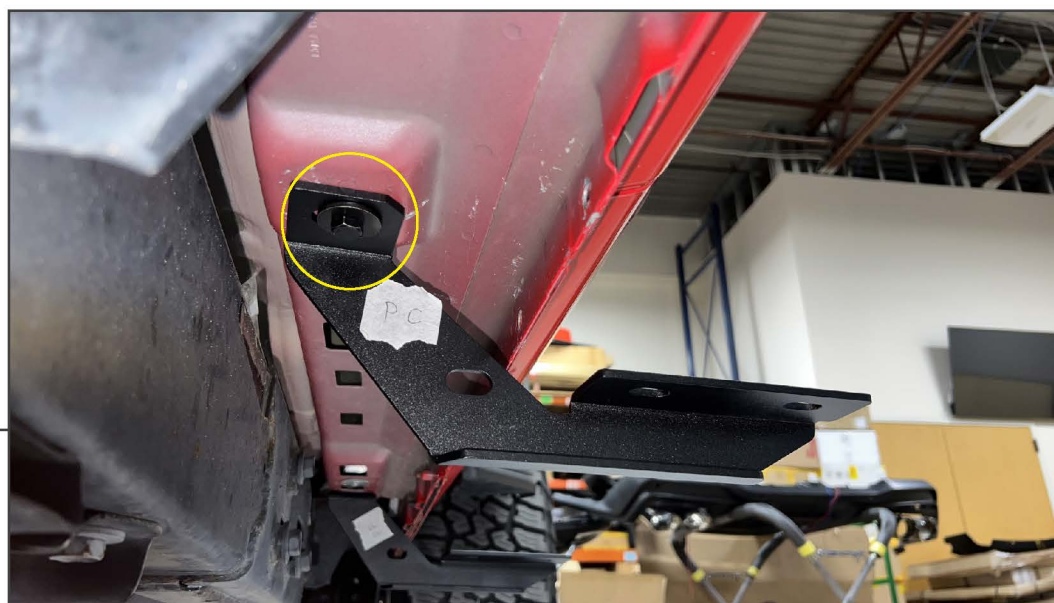
SKU # J216057

STEP 1



Lay out and identify all mounting brackets.

STEP 2



Loosely secure each appropriate step mounting bracket to the vehicle using (1) M8 x 35mm bolt, (1) M8 lock washer, and (1) M8 flat washer into the vehicle threaded insert.

Allow the bracket to remain loose at this time to allow for adjustments later.

2007-2010 Wrangler JK: Fit the included (6) M10 nut plates into the vehicle rocker panel. These nut plates will accept the (6) M10 x 35mm bolts, (6) M10 lock washers, and (6) M10 flat washers instead of the M8 hardware stated above.

STEP 3



Loosely secure each appropriate rocker panel mounting bracket to the vehicle using (2) M6 x 25mm bolts, (4) M6 flat washers, and (2) M6 lock nuts through the vehicle pinch weld.

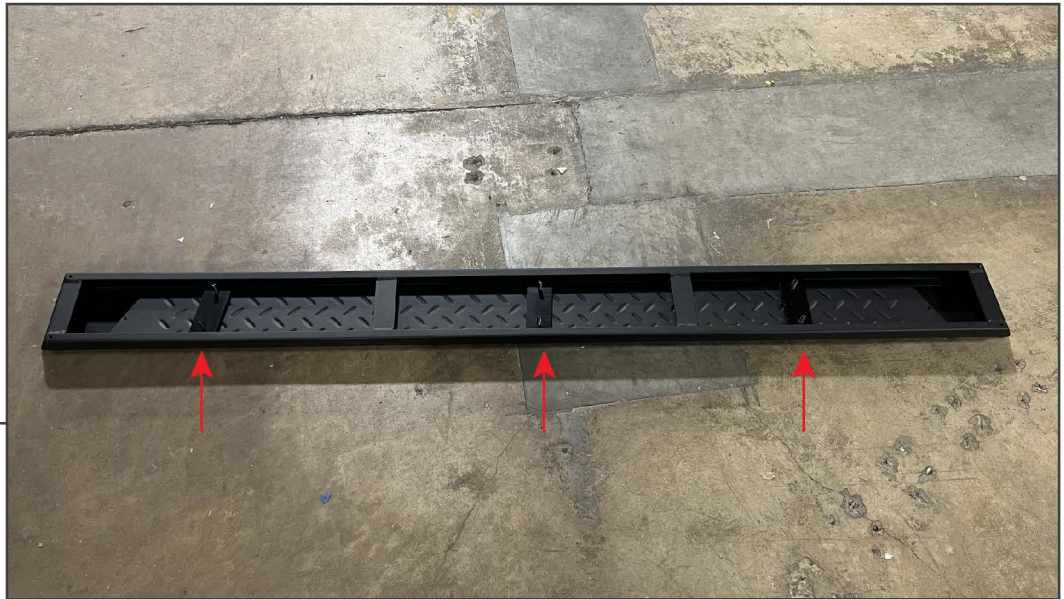
Allow the bracket to remain loose at this time to allow for adjustments later.

STEP 4



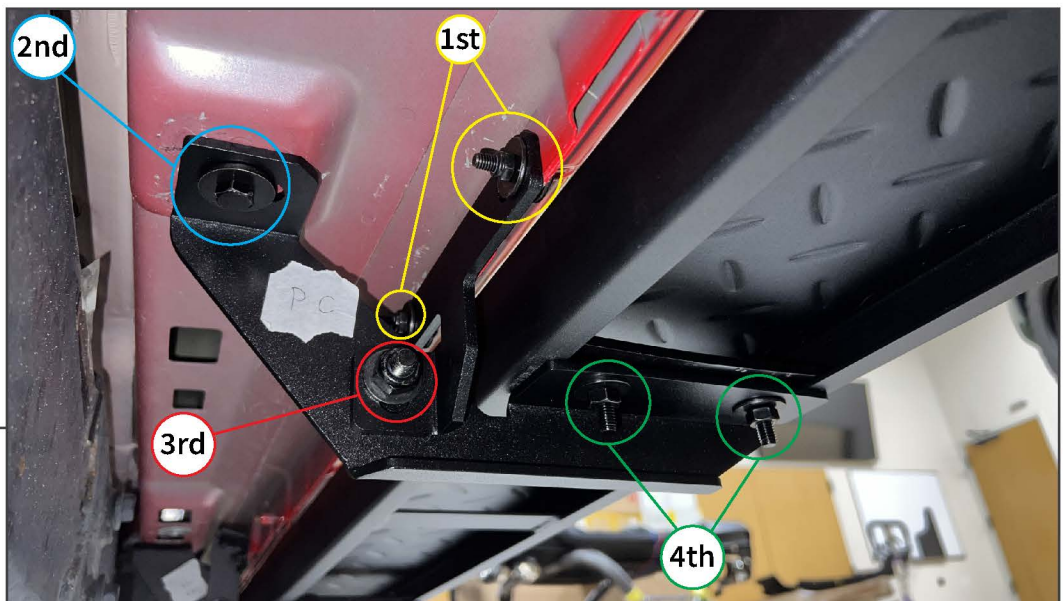
Loosely secure the two previously installed mounting brackets together using (1) M10 x 30mm bolt, (1) M10 lock washer, (2) M10 flat washers, and (1) M10 nut per bracket assembly.

STEP 5



Fit (3) stud plates onto the inside of the side step. Then, fit the side step to the brackets, ensuring the studs align within each mounting bracket.

STEP 6



Loosely secure the side step to the brackets using (2) M8 flat washers and (2) M8 lock nuts per stud plate. Adjust the side step on the brackets until best fit. Then, using the diagram above, tighten all hardware in order evenly.



STEP 7

Repeat steps 1-6 for the remaining side step.

Installation is now complete.