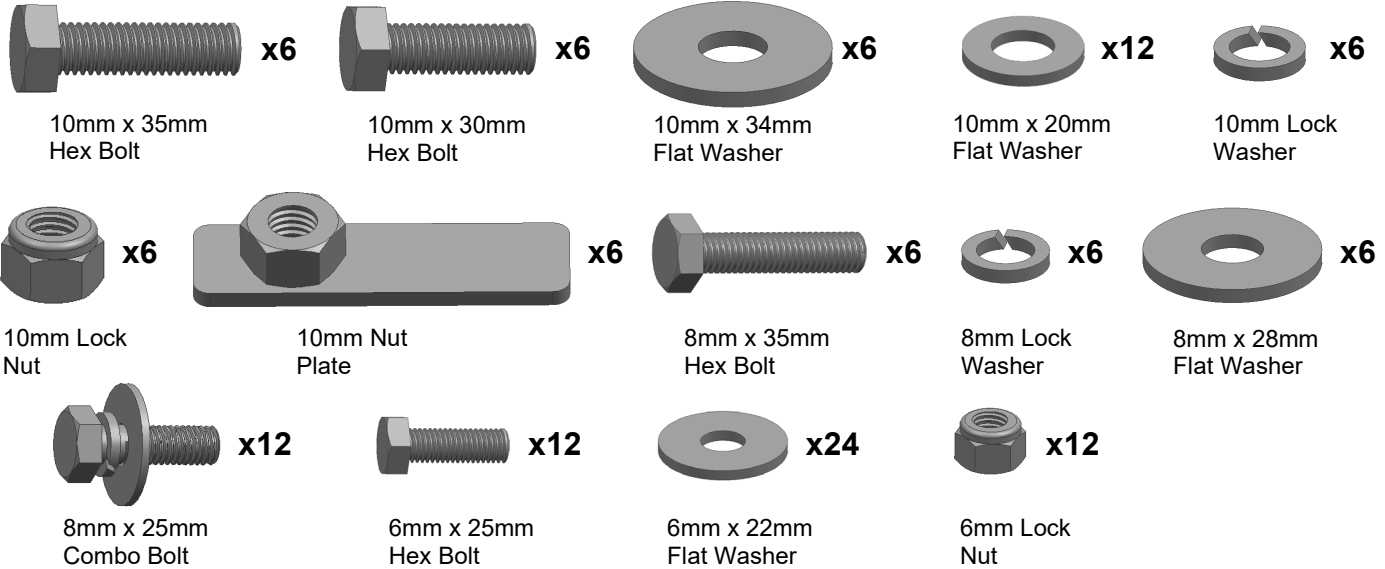


#2: Passenger/Right Support Bracket x 3

REDROCK

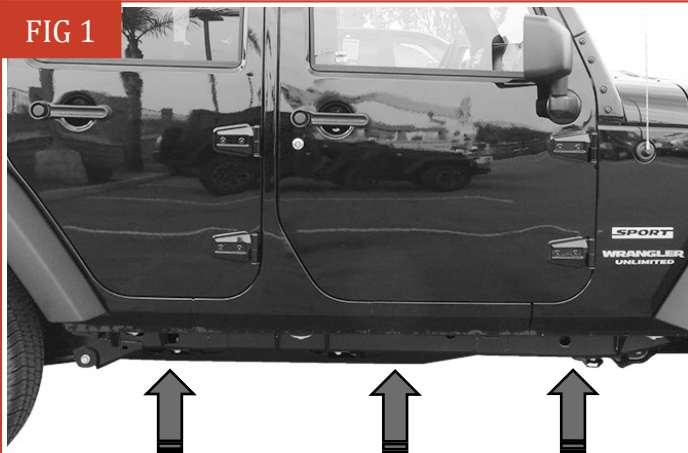


PLEASE NOTE THAT THE FOLLOWING PICTURES ARE BASED ON THE PASSENGER SIDE INSTALLATION

STEP 1

Start installation toward the front of the Passenger/Right side of the vehicle, Locate the front, center and rear mounting locations (Fig 1).

FIG 1



(Fig 1) Passenger/Right mounting locations

STEP 2

Determine if the vehicle has an open floor panel or a threaded hole in the floor panel

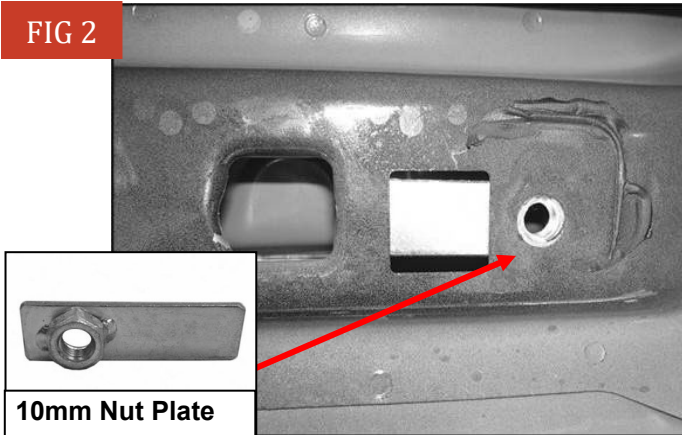
(1) Vehicles with open mounting location:

- Insert (1) 10mm Nut Plate into the large square opening in the floor panel. Line up the threaded nut with the hole in between the pair of holes on the pinch weld, (Fig 2).
- Select the Passenger/Right Front Mounting Bracket. **NOTE: There is a small notch at the Bottom of the Center Brackets and the notch of Rear Brackets is at the Top.** Please identify the Front, Center and Rear Brackets according to the Part List.
- Attach the Bracket to the Nut Plate with (1) 10mm x 35mm Hex Bolt, (1) 10mm Lock Washer and (1) 10mm x 34mm Flat Washer, (Fig 3). Do not tighten hardware.

(2) Vehicles with factory threaded hole in floor panel:

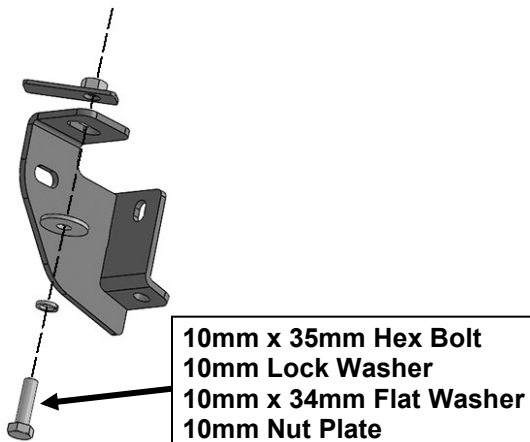
- Select the Passenger/Right Front Mounting Bracket. Attach the Bracket to the front mounting location (Fig 4) with (1) 8mm Hex Bolt, (1) 8mm Lock Washer and (1) 8mm Flat Washer, (Fig 5). Do not tighten hardware.

FIG 2



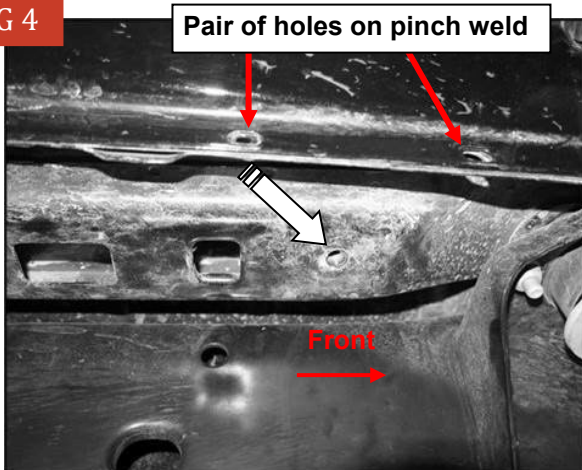
(Fig 2) Passenger/Right front mounting location
(Models open mounting location shown)

FIG 3



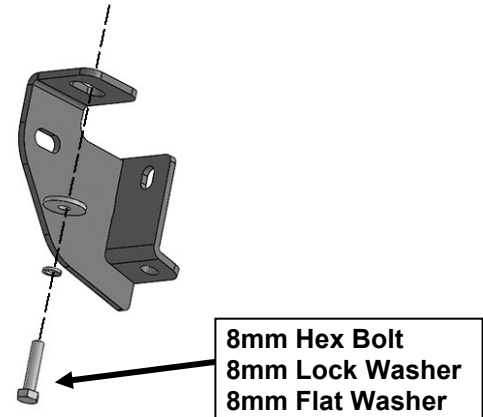
(Fig 3) Attach the Passenger/Right Front Mounting Bracket to the Nut Plate

FIG 4



(Fig4) Passenger/Right front mounting location
(Models with threaded insert shown)

FIG 5

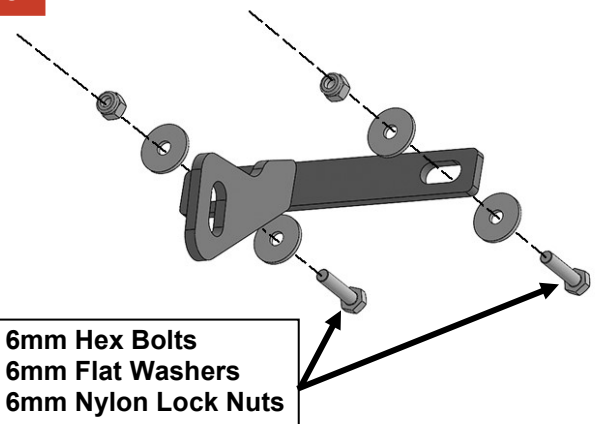


(Fig5) Attach the Passenger/Right Front Mounting Bracket to the Threaded Hole

STEP 3

Select (1) Passenger/Right Support Bracket (#2). Attach the Support Bracket to the pinch weld with (2) 6mm Hex Bolts, (4) 6mm Flat Washers and (2) 6mm Nylon Lock Nuts, (Fig 6).

FIG 6

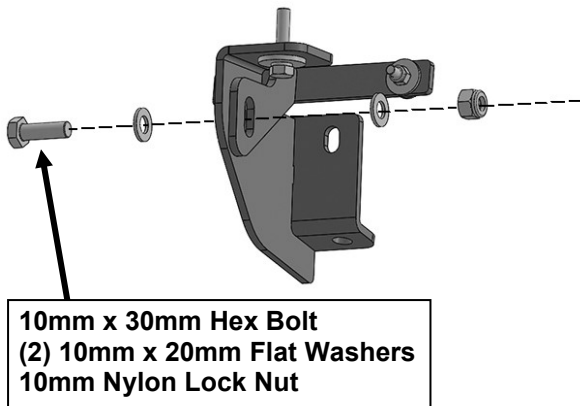


(Fig 6) Attach (1) Passenger/Right Support Bracket (#2) to the (2) holes in the pinch trim in the front location

STEP 4

Attach the Support Bracket to the Mounting Bracket with (1) **10mm x 30mm Hex Bolt**, (2) **10mm x 20mm Flat Washers** and (1) **10mm Nylon Lock Nut**, (**Fig 7**). Do not tighten hardware.

FIG 7

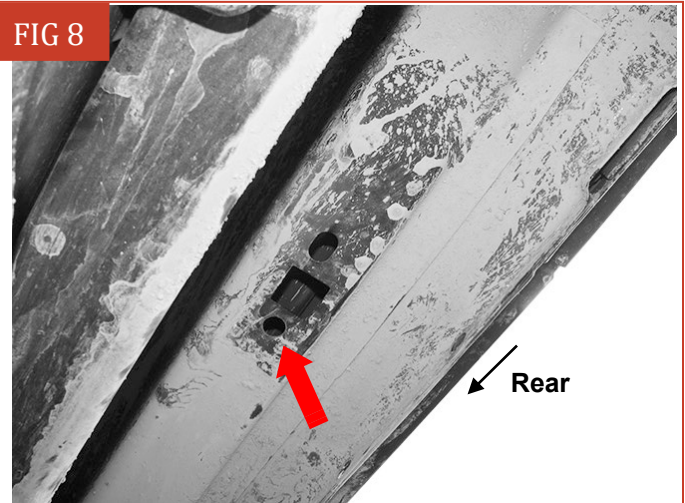


(Fig 7) Attach (1) Passenger/Right Support Bracket (#2) to the Front Mounting Bracket

STEP 5

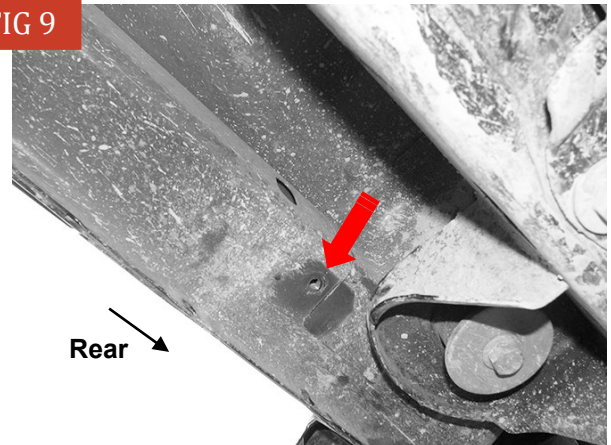
Repeat **Steps 2 - 4** to attach the Passenger/Right Center and Rear Mounting Brackets and Support Brackets to the center and rear locations, (**Figs 8-9**). **NOTE:** There is a small notch at the **Bottom** of the Center Brackets and the notch of Rear Brackets is at the **Top**. Please identify the Center and Rear Brackets according to this, (**Fig 10**). Do not tighten hardware.

FIG 8



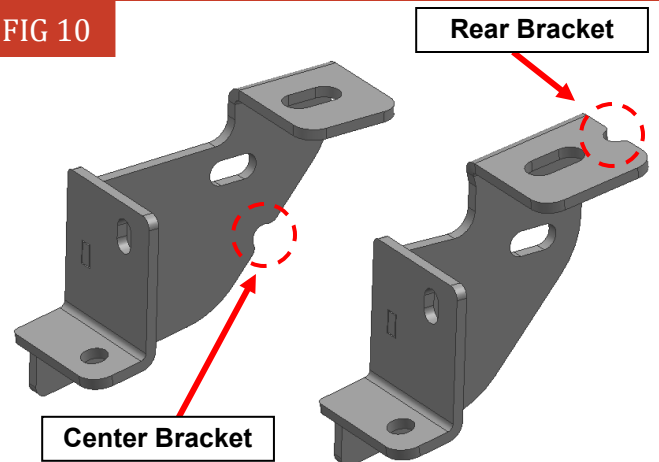
(Fig 8) Passenger/Right center mounting location (Model with open mounting location shown)

FIG 9



(Fig 9) Passenger/Right rear mounting location (Model with threaded inset shown)

FIG 10



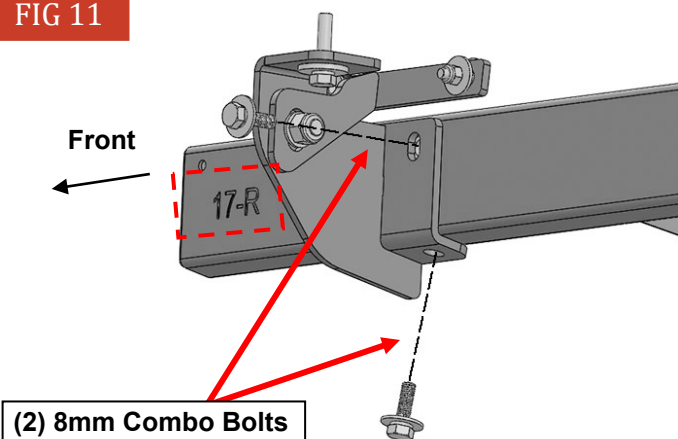
(Fig 10) Differentiate the Center and Rear Brackets

STEP 6

Select the Passenger/Right Running Board.

NOTE: The Passenger/Right Running Board will have a “17-R” on the front. Attach the Running Board to the Mounting Brackets with (6) 8mm Combo Bolts, (Fig 11). **IMPORTANT:** Do not slide Running Board on the Mounting Bracket cradles, or damage to the finish may result. Do not tighten hardware.

FIG 11



(Fig 11) Attach the Passenger/Right Running Board to the Mounting Brackets

STEP 7

Level and adjust the Running Board and tighten all hardware.

STEP 8

Repeat **Steps 1—7** to attach Driver/Left Running Board.

STEP 9

Do periodic inspections to the installation to make sure that all hardware is secure and tight.

Attention

To protect your investment, do not use any type of polish or wax that may contain abrasives that could damage the finish.

Mild soap may be used also to clean the Running Boards.