



# HOOD CATCH KIT

(2007-2018 WRANGLER JK)  
(2018-2024+ WRANGLER JL)  
(2020-2024+ GLADIATOR JT)

---

## INSTALLATION INSTRUCTIONS

### CONTENTS

---

- (2) Hood Catch Assemblies
- (2) Hood Mounts
- (2) Fender Mount Spacers [JK]
- (2) Fender Mount Spacers [JL/JT]
- (2) Hood Mount Spacers [JK]
- (2) Hood Mount Spacers [JL/JT]
- (2) M8 Allen Bolts
- (2) M8 Flat Washer
- (2) M8 Lock Nuts
- (4) M6 Allen Bolts
- (4) M6 Flat Washers
- (4) M6 Lock Nuts
- (1) 5mm Allen Key
- (1) 4mm Allen Key
- (1) 3mm Allen Key

### TOOLS REQUIRED

---

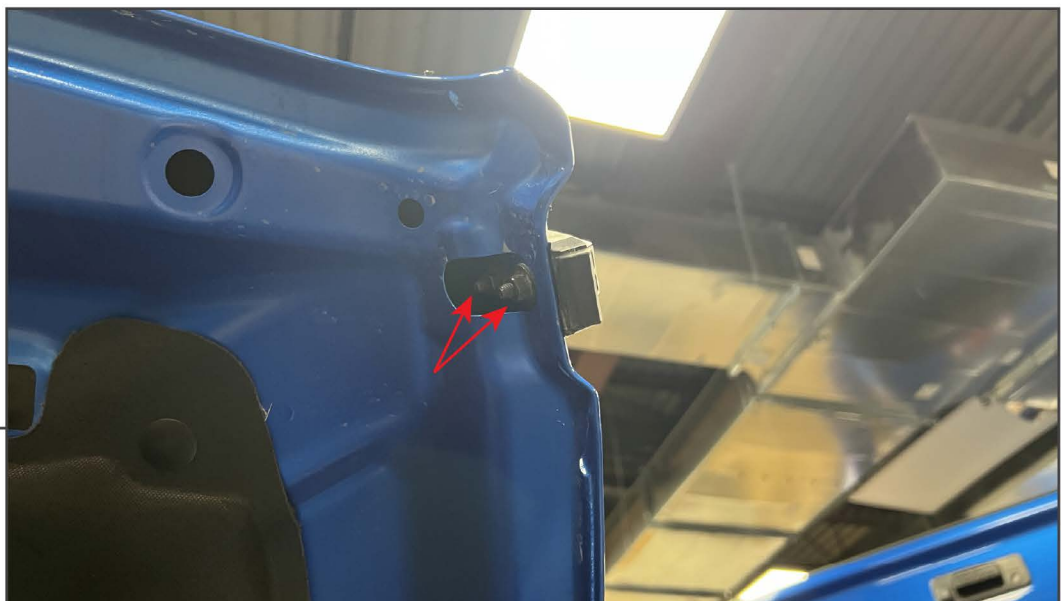
10mm, 13mm Wrench/Socket  
Ratchet



## STEP 1

Open the vehicle hood, and locate the hood catch stud. Remove (1) 13mm nut from the hood catch, then remove the hood catch.

Clean the vehicle painted surface using exterior detailer and a microfiber cloth.



## STEP 2

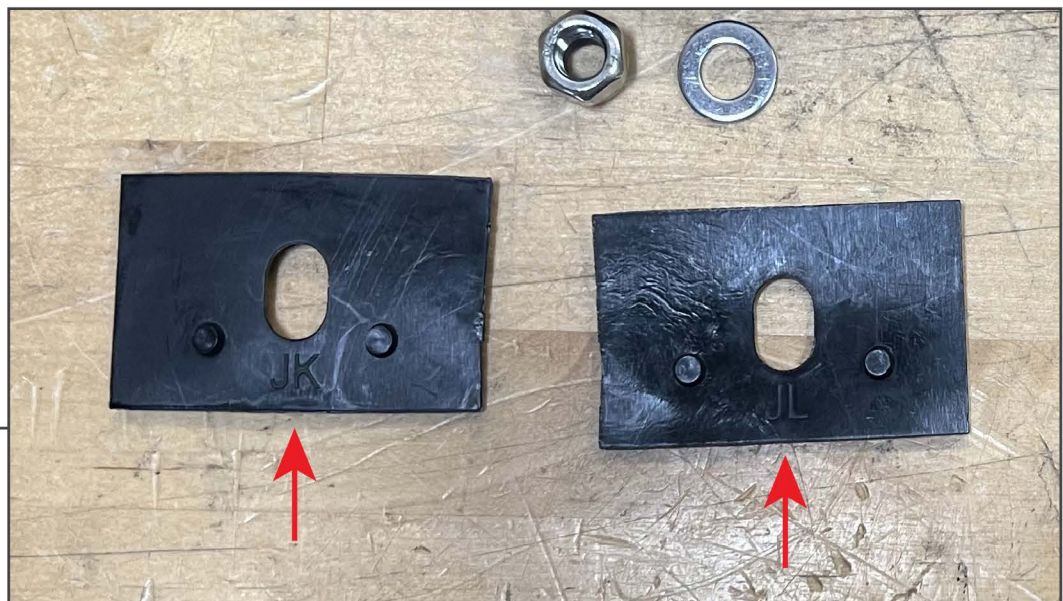
Locate the hood catch retainer, and remove the (2) 10mm nuts securing the retainer to the hood.

Clean the vehicle painted surface using exterior detailer and a microfiber cloth.



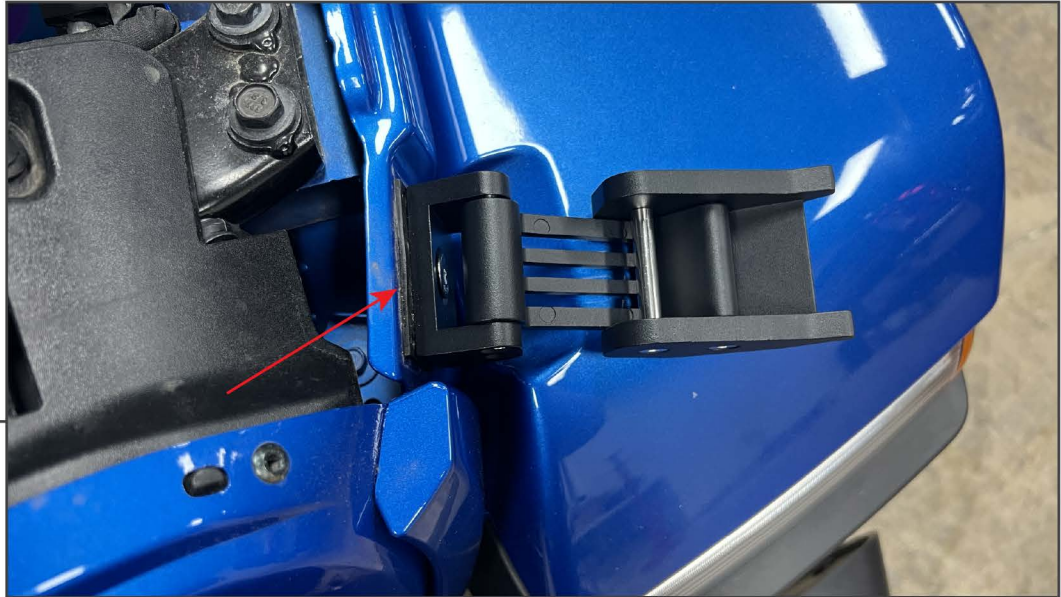
## STEP 3

Place the hood catch on a workable surface. Using a 3mm Allen key, remove the hood catch limiting bar temporarily.



## STEP 4

Determine the correct spacers for the vehicle using the embossed labels in the spacers.



## STEP 5

Mount the fender mounted portion of the hood catch and appropriate spacer using (1) M8 Allen bolt, (1) M8 flat washer, and (1) M8 lock nut. Ensure the spacer is fully seated into the fender holes and the hood catch is pointing upwards while tightening.

With the hood catch mounted, re-install the limiting bar removed in step 3.



## STEP 6

Mount the hood mounted portion of the hood catch with the appropriate spacer to the vehicle hood using (2) M6 bolts, (2) M6 flat washers, and (2) M6 lock nuts. Do not fully tighten the hardware initially, test fit the hood catch at various adjustments until the required hood tension is achieved, then fully tighten the hardware into place.



---

## STEP 7

Repeat steps 1-6 for the remaining hood catch.

Installation is now complete.