



TAILGATE DOOR LIMIT STRAP

(2007-2018 WRANGLER JK)

INSTALLATION INSTRUCTIONS

CONTENTS

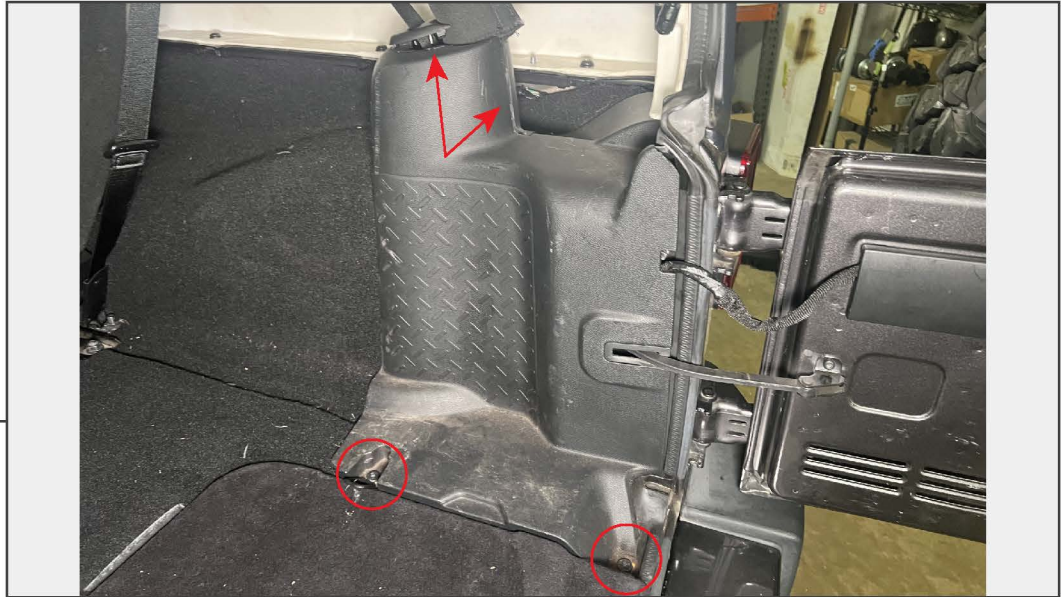
- (1) Tailgate Bracket
- (1) Chassis Bracket
- (6) M6x1.00 Allen Bolts
- (1) Allen Key
- (2) D-Rings

TOOLS REQUIRED

- T-30 Torx Socket
- 4mm Allen Key
- Ratchet
- Pliers

SKU # J215626

STEP 1



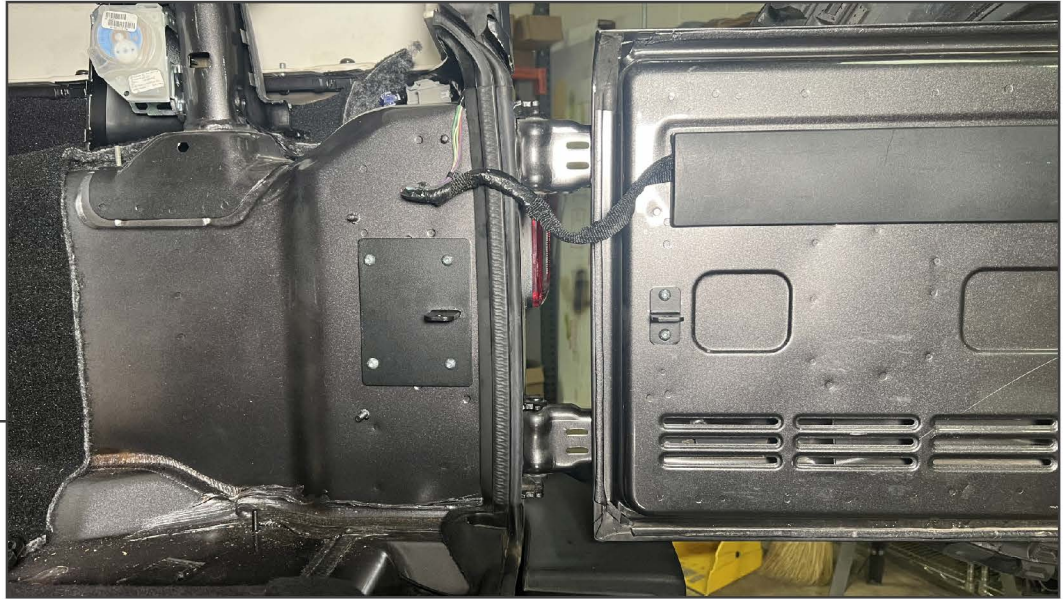
Remove (2) T-30 Torx bolts from the cargo area securing the plastic trim panel into place. Then, use a plastic trim tool to disconnect the roll bar trim from the cargo area trim panel. Remove and set the trim panel aside.

STEP 2



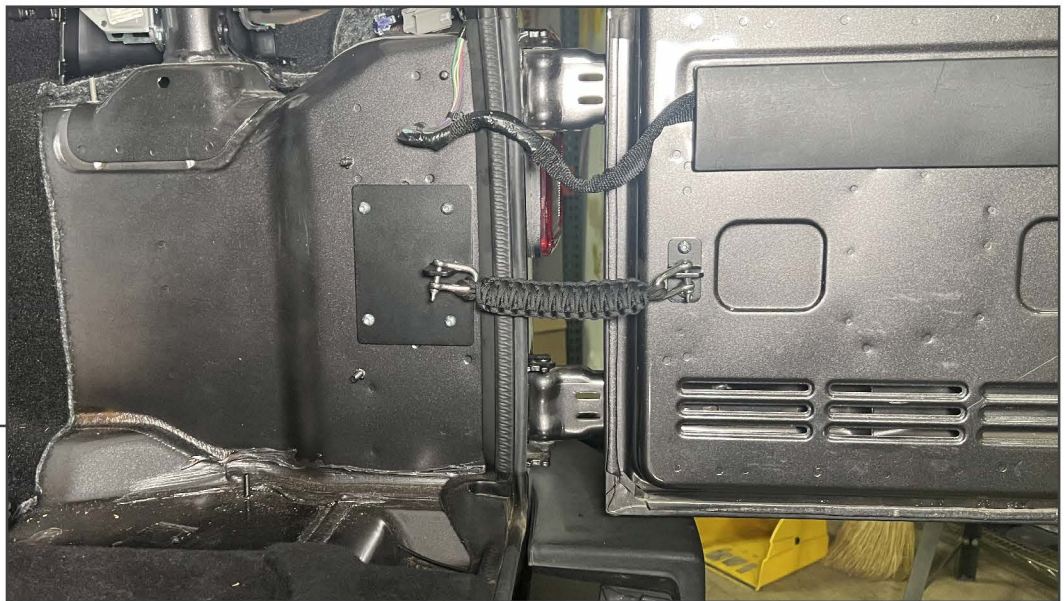
Remove (2) T-30 Torx bolts from the tailgate side of the door limit check. Then, remove (4) T-30 Torx bolts from the chassis side of the door limit check. Remove the door limit check from the vehicle.

STEP 3



Install the chassis side and tailgate side brackets to the vehicle using the included (6) M6 Allen bolts. Tighten the hardware evenly until each bracket is secure.

STEP 4



Install the paracord strap to the brackets using the (2) D-Rings. Tighten the D-Rings using pliers once installed to secure into place.

Re-install the cargo area trim panel into place using the original hardware.

Installation is now complete.