



TCX HD DROP STEPS

(2007-2018 WRANGLER JK - 2 DOOR)

INSTALLATION INSTRUCTIONS

CONTENTS

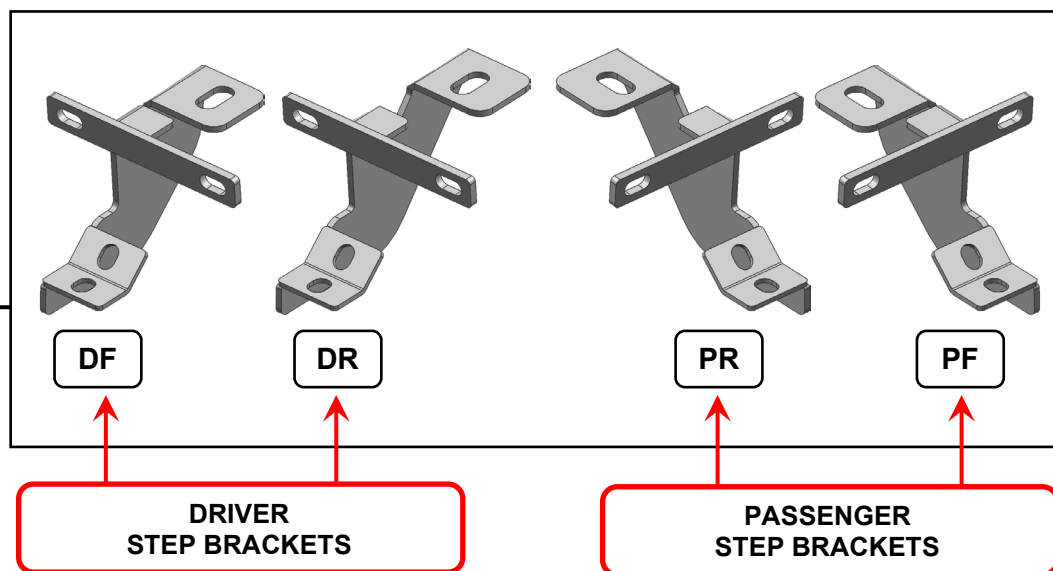
(1) LH Running Board
(1) RH Running Board
(1) LH Front Bracket [DF]
(1) LH Rear Bracket [DR]
(1) RH Front Bracket [PF]
(1) RH Rear Bracket [PR]
(4) M10 x 35mm Hex Bolts
(4) M10 Flat Washers
(4) M10 Lock Washers
(4) M10 Nut Plates
(8) M8 x 25mm Combo Bolts
(4) M8 x 35mm Hex Bolts
(4) M8 Flat Washers
(4) M8 Lock Washers
(8) M6 x 25mm Hex Bolts
(16) M6 Flat Washers
(8) M6 Lock Nuts

TOOLS REQUIRED

10mm Wrench/Socket
13mm Wrench/Socket
16mm Wrench/Socket
Ratchet

SKU # J214073
Edited:07/11/2024

STEP 1

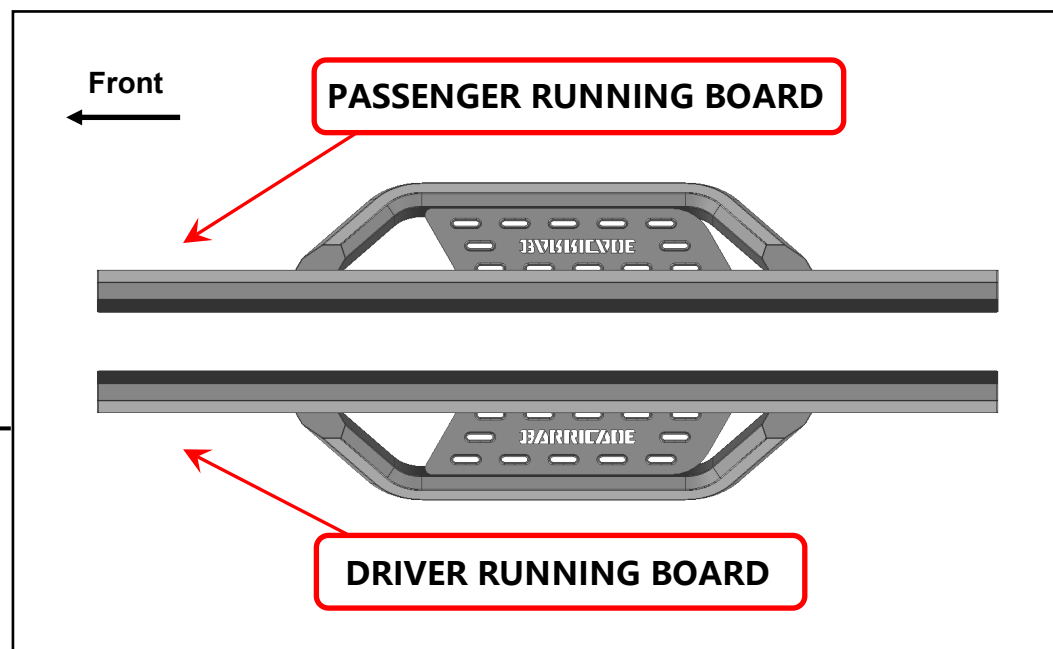


Mounting Brackets look very similar but are unique. Please identify each mounting bracket using the engraved location identifier.

DF: Driver Front
DR: Driver Rear

PF: Passenger Front
PR: Passenger Rear

STEP 2



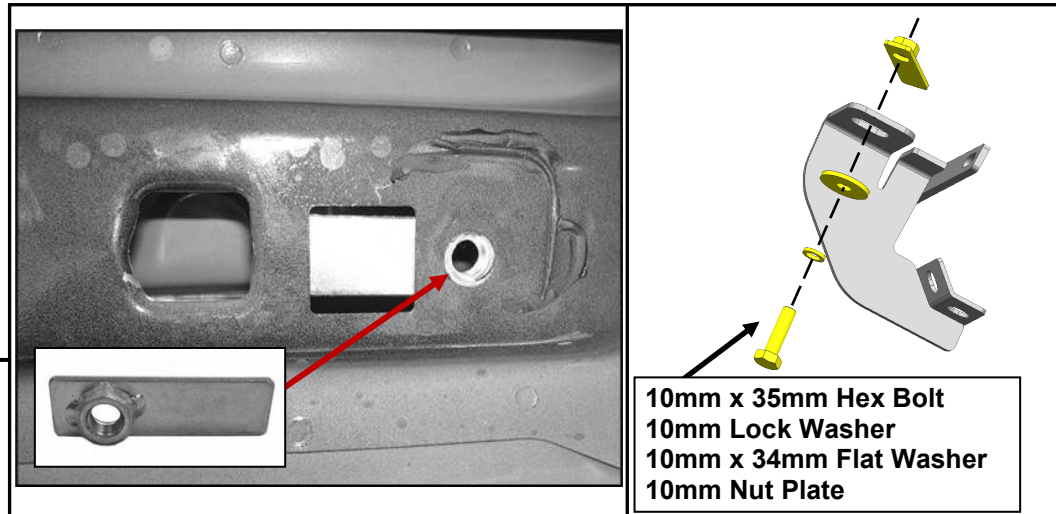
Identify each running board by identifier on the front. Notice: “D” for Driver/Left Side; “P” for Passenger/Right Side.

Determine if the vehicle has an open floor panel or a threaded hole in the floor panel.

Vehicles with open mounting location follow Step 3.1:

Vehicles with factory threaded hole in floor panel follow Step 3.2:

STEP 3.1

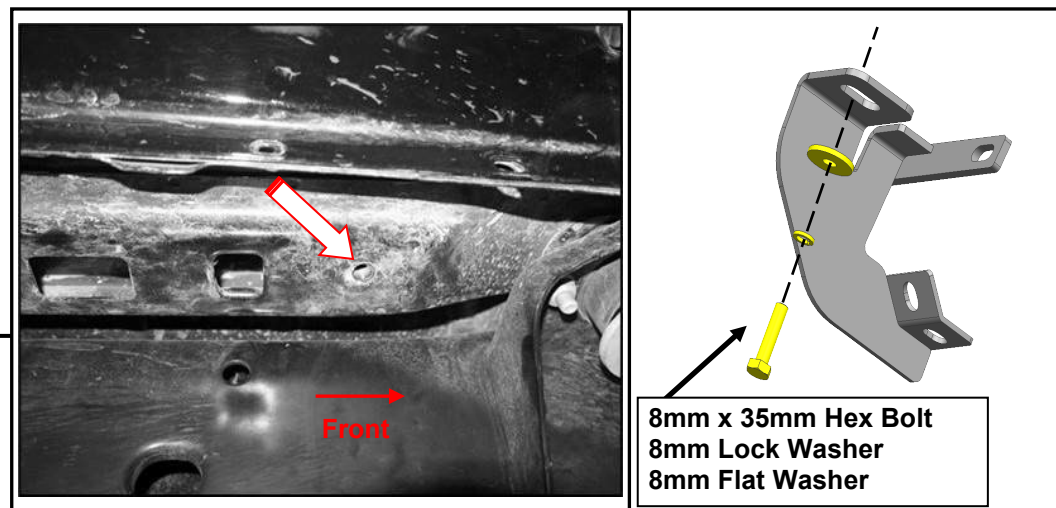


Start installation toward the front of the Passenger/Right side of the vehicle.

Insert (1) M10 nut plates into the large square opening in the floor panel. Line up the threaded nut with the hole in between the pair of holes on the pinch weld.

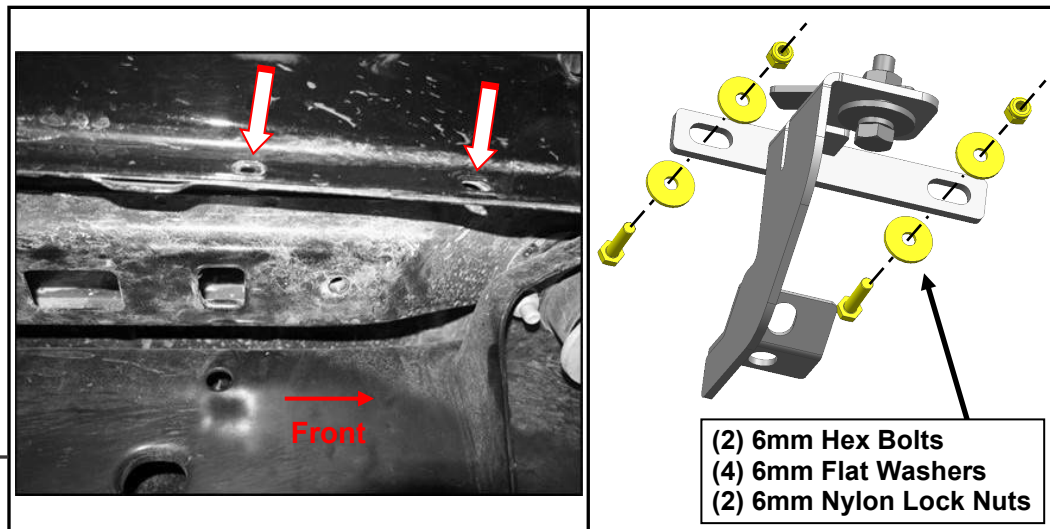
Loosely fit the (1) Passenger Front bracket to the M10 nut plates, using (1) M10 x 35mm hex bolt, (1) M10 lock washer, and (1) M10 flat washer. Do not fully tighten to allow for later adjustments. Repeat this step for all step brackets.

STEP 3.2



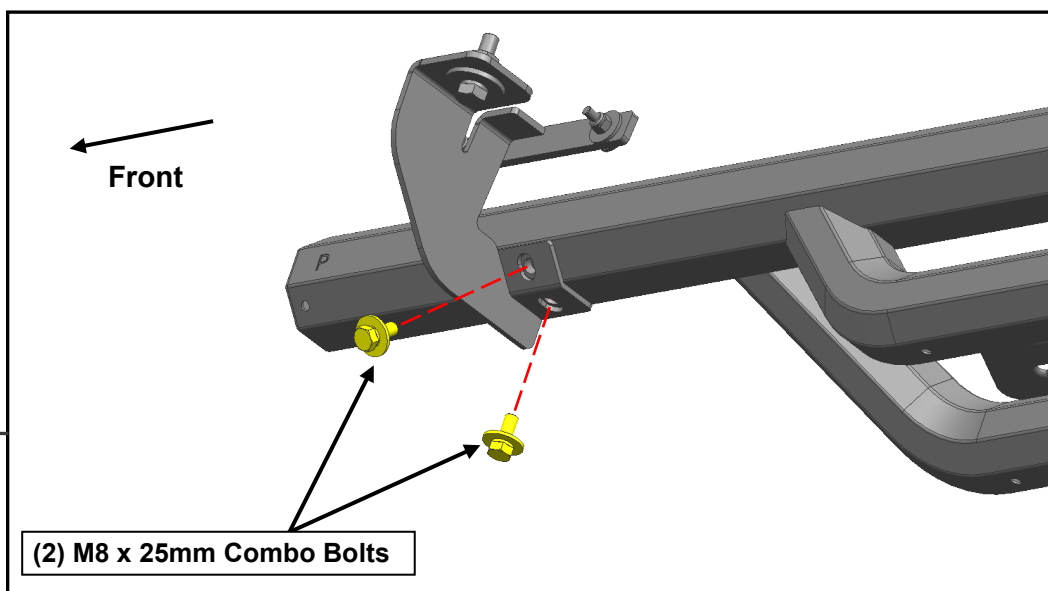
Loosely fit the (1) Passenger Front bracket to the vehicle threaded body hole using (1) M8 x 35mm hex bolt, (1) M8 lock washer, and (1) M8 flat washer. Do not fully tighten to allow for later adjustments. Repeat this step for all step brackets.

STEP 4

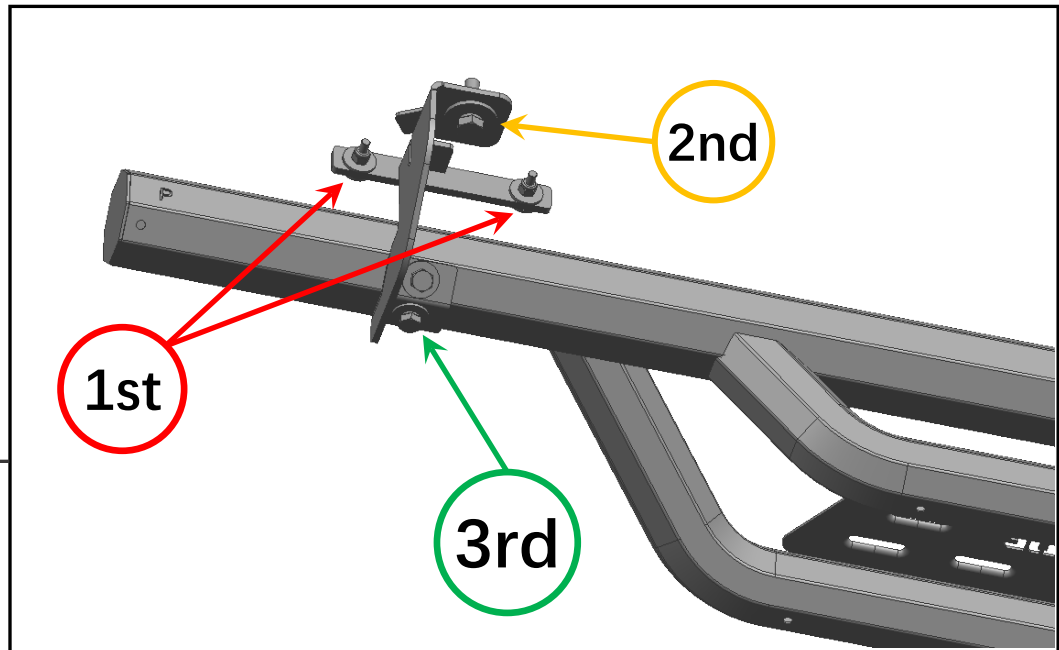


Loosely fit the Passenger Front bracket to the **vehicle pinch weld** using (2) M6 x 25mm hex bolts, (4) M6 flat washers, and (2) M6 lock nuts. Do not fully tighten to allow for later adjustments. Repeat this step for all step brackets.

STEP 5



With all brackets loosely mounted to the vehicle, fit the running board onto the brackets, and loosely secure into place using (4) M8 x 25mm combo bolts.



STEP 6

Tighten the mounting brackets to the vehicle (M6 first, then M8 / M10). Adjust the running board to the desired angle, and tighten the M8 combo bolts to secure the step into place. See photo for tightening order visual.

Repeat steps 1 - 6 for the remaining running board.

Installation is now complete.