



DOOR STRAP KIT

(2007-2018 WRANGLER JK)

INSTALLATION INSTRUCTIONS

CONTENTS

(2) Door Straps

TOOLS REQUIRED

T-25, T-30 Torx Socket
Phillips Screwdriver
Panel Removal Tool
Razor Knife
Tape

STEP 1

Begin removing the door panel. Remove the plastic trim using a panel removal tool. The Allen head bolts are not threaded into the door panel.

Remove the (2) Phillips screws from the door panel.

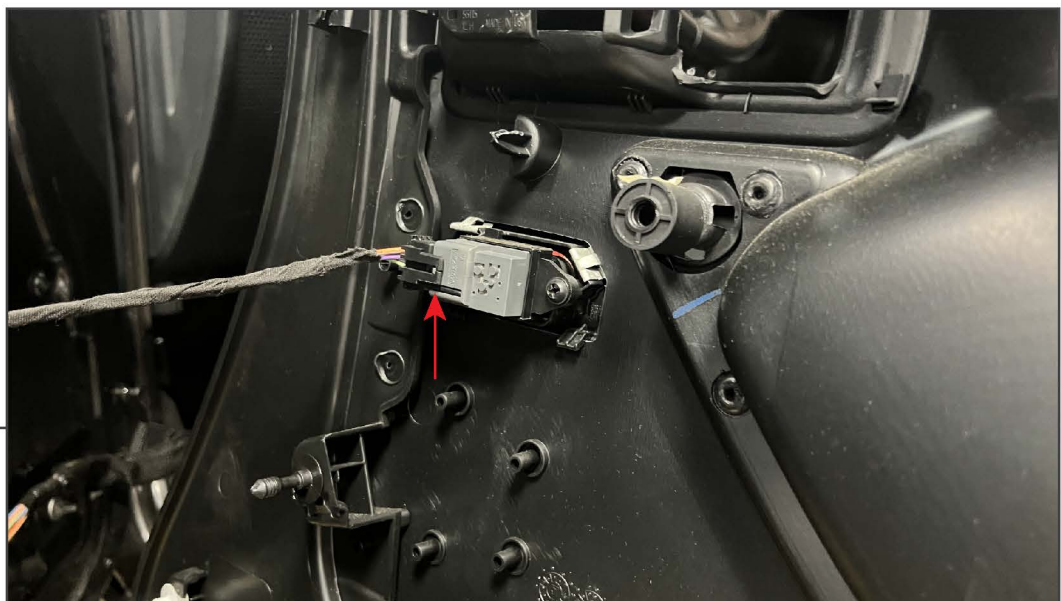
STEP 2

Remove the door latch plastic trim using a panel removal tool. Remove (1) T-30 Torx screw from the door panel. Remove the door latch trim bezel from the door panel by pulling the bezel away firmly.

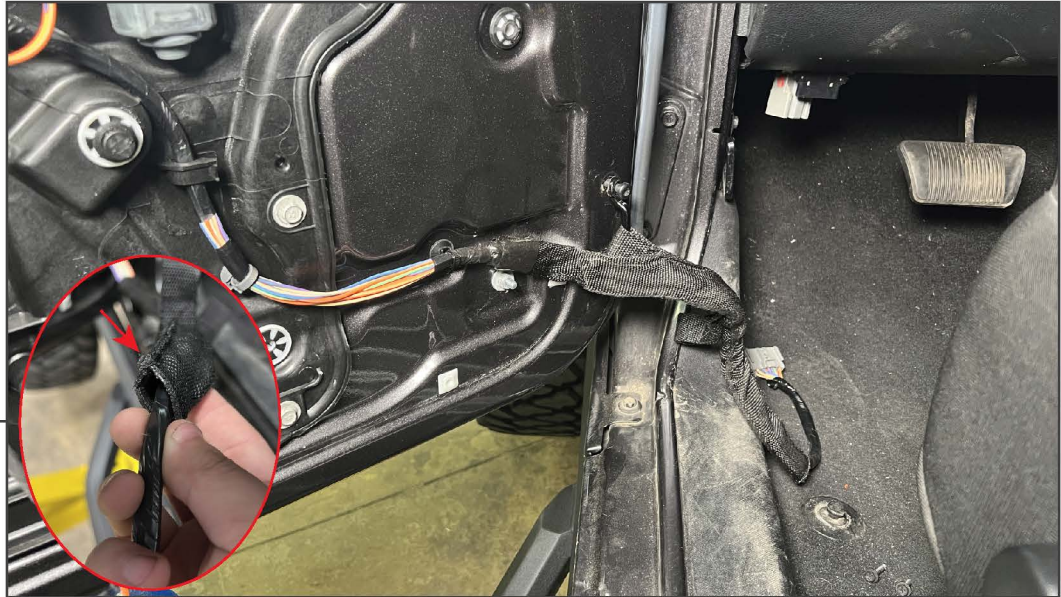
STEP 3

Below the door panel storage net, remove (2) T-25 Torx screws.

Remove (2) T-30 Torx bolts from the door strap bracket. Remove the bracket from the strap and set the hardware and bracket aside for reuse later.

STEP 4

Beginning at the bottom, pull the door panel away from the vehicle to disengage the clips. If equipped with power locks, unplug the power locks electrical connector during removal.

STEP 5

Unplug the door electrical connector from the vehicle dashboard and un-hook the strap. Carefully remove the tape securing the original door strap to the wiring harness. Then, carefully use a razor knife to cut the sewn seam on the strap to allow the wiring out of the strap.

STEP 6

With the old strap removed, fit the new strap over the wiring harness. Secure the strap to the wiring harness using the strap zipper. Fit the original door strap bracket to the new strap, and secure the strap to the door. Use new tape to secure the strap to the harness similar to the original strap. Re-install the door panel following steps 1-4 in reverse order.

Repeat steps 1-6 for the remaining door strap.

Installation is now complete.