

# **HIGH OUTPUT 120W LED HEADLIGHTS WITH ANGEL EYE DRL**

(2007-2018 WRANGLER JK)

---

## INSTALLATION INSTRUCTIONS

### CONTENTS

---

(2) LED Headlights  
(2) Adapter Harness  
(4) Wire Leads  
(4) Scotchlok Connectors

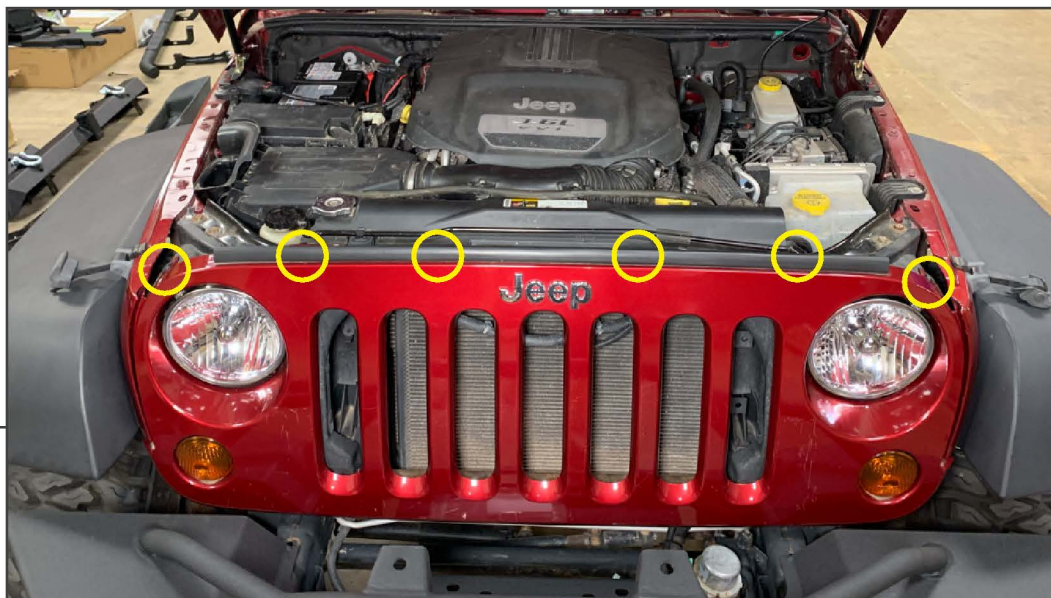
### TOOLS REQUIRED

---

T-15 Torx Screwdriver  
Panel Removal Tool

---

**STEP 1**



Open the hood of the vehicle. Remove (6) plastic push clips from the top of the grille.

---

**STEP 2**



Firmly pull the lower portion of the grille to dislodge (6) metal clips securing the grille to the radiator support.

---

**STEP 3**



Twist the turn signal socket to remove the turn signal bulbs from the grille. Remove the grille from the vehicle.

Repeat this procedure to the opposite side of the vehicle.

---

**STEP 4**



Remove (4) T-15 Torx screws from the headlight retaining ring.

Repeat this step to the opposite side of the vehicle.



**STEP 5**



Un-plug the headlight from the vehicle. Slide the red locking tab towards the back of the connector, then press in the green plastic tab to dislodge the electrical connector from the headlight.

Repeat this step to the opposite side of the vehicle.

**STEP 6**

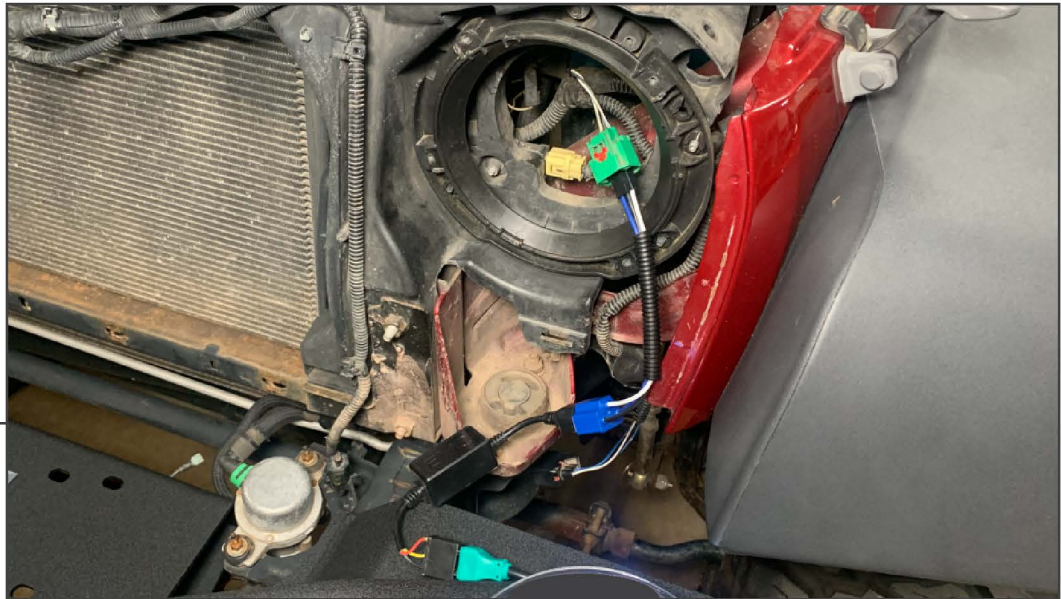


Assemble the headlight assembly harness. Connect the (1) headlight adapter harness per headlight to the headlight wiring harness.

Plug in the (2) included wire leads into the headlight harness lead terminals.

---

**STEP 7**



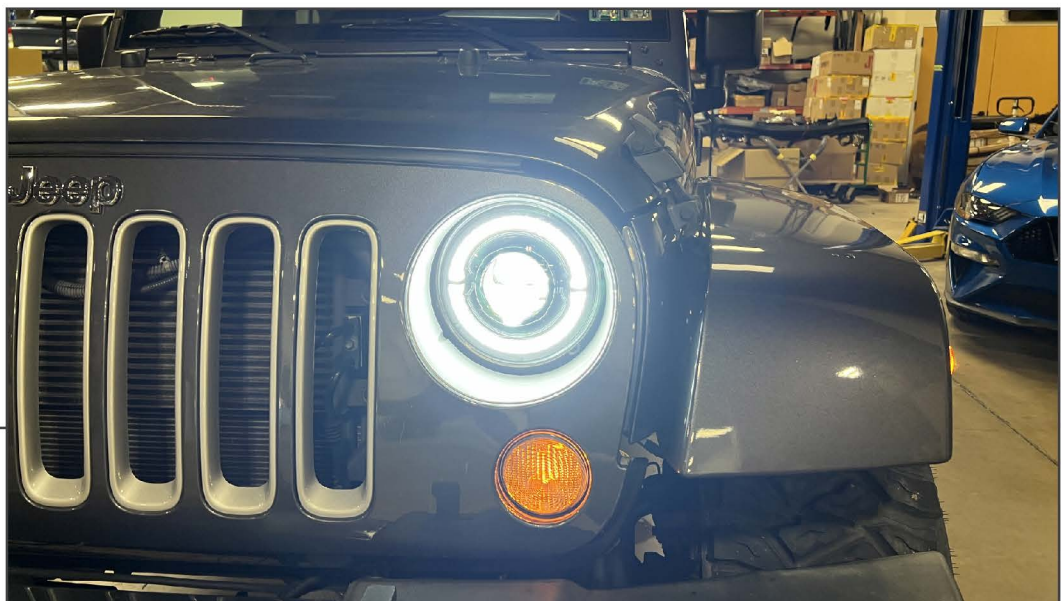
Plug the new headlight harness into the original vehicle headlight connector. Route the (2) DRL wires towards the grille mounted turn signal/parking lamp. Splice the (2) wire leads into the vehicle turn signal/parking lamp following the diagram below.

<u>Headlight Harness</u>	-	<u>Vehicle Harness</u>
Yellow (Turn Signal +)	-	LH Side: White/Gray ; RH Side: White/Pink
White (DRL +)	-	LH Side: White/Green ; RH Side: White/Tan

Note: Wiring colors may vary with vehicle model year.

---

**STEP 8**



Re-assemble the vehicle following steps 1-7 in reverse order.

Installation is now complete.