



MULTI-FUNCTION PLATFORM STYLE ALUMINUM ROOF RACK

(2007-2018 WRANGLER JK - WITH OEM HARDTOP)

INSTALLATION INSTRUCTIONS

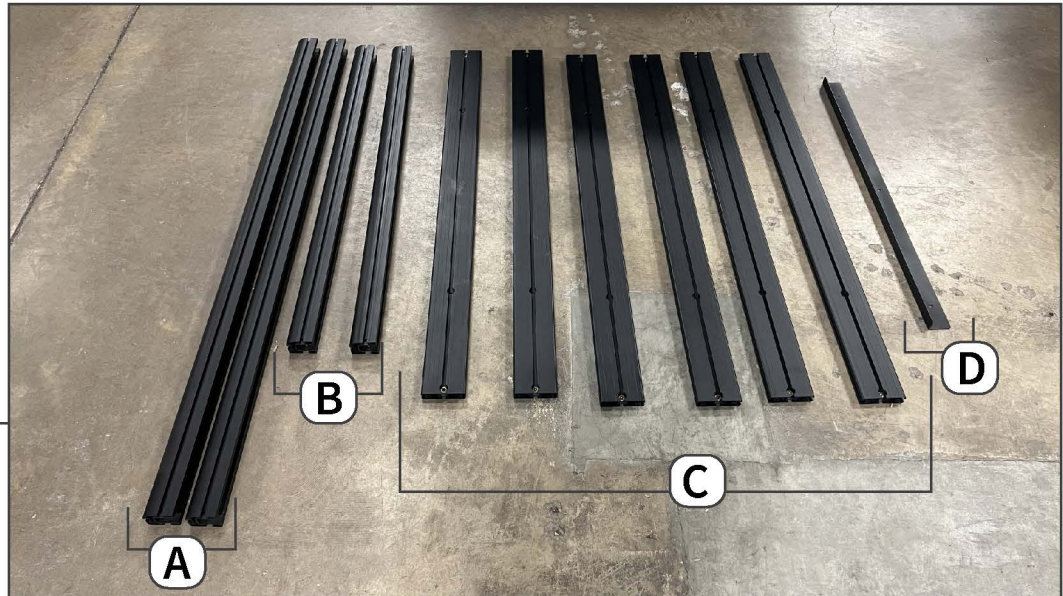
CONTENTS

- (2) Vertical Outer Bars
- (2) Horizontal Outer Bars
- (6) Cross Bars
- (1) "L" Bracket
- (4) Corner Panels
- (4) Upper Clamp Brackets
- (4) Lower Clamp Brackets
- (2) Rear Brackets
- (4) M8x1.25 x 35mm Button Head Allen Bolts
- (8) M8x1.25 x 35mm Cap Allen Bolts
- (3) M8x1.25 x 16mm Cap Allen Bolts
- (15) M8 Lock Washers
- (12) M8x1.25 x 25mm Cap Allen Bolts
- (10) M8x1.25 x 20mm Cap Allen Bolts
- (27) M8 Flat Washers [Small]
- (16) M8 Flat Washers [Large]
- (12) M8 Flat Threaded Inserts
- (13) M8 Raised Threaded Inserts
- (4) M8 Eyelets

TOOLS REQUIRED

- 5mm, 6mm Allen Sockets/Key
- 10mm Socket
- Ratchet
- Plastic Pry Tool

STEP 1



Lay out and identify all roof rack components.

[A] - Vertical Outer Bars

[B] - Horizontal Outer Bars

[C] - Cross Bars

[D] 'L' Bracket (Wind Deflector, Optional Installation)

STEP 2



Begin building the outer sides of the roof rack. Fit (1) M8 flat threaded insert into the vertical outer bar and the horizontal outer bar. Then, fit (1) corner panel to connect the two bars. Secure the bars together using (2) M8 x 35mm cap Allen bolts and (2) M8 flat washers into the outer bar, through the corner panel, and into the previously placed insert.

Note: The cross bars are designed to only allow the M8 bolt to fit through on one side of the bar. If the bolt does not fit initially, turn the bar over and insert the bolt. Transfer the insert to the opposite side of the bar if necessary.

STEP 3



Insert the (6) cross bars into the roof rack. Do not secure into place at this time.

STEP 4



Using (4) M8 raised threaded inserts, fit the inserts into the vertical outer bars. The indicated location in the diagram above is recommended to ensure hardtop mountability [RED].

With the threaded inserts in place, secure all cross bars into place using (12) M8 x 25mm cap Allen bolts and (12) M8 flat washers.

STEP 5



Fit (2) M8 raised threaded inserts into the rear horizontal bar, then add the corner panels and secure to the roof rack assembly following the same procedure as step 2.

STEP 6



Remove the rear hardtop glass hinge plastic cover using a small plastic pry tool under the notch. Then, hinge the cover upwards and lift the cover from the hinge. Remove the (2) 10mm bolts securing the glass hinge to the hardtop.

Note: Only remove the hinge from the hardtop on one side of the vehicle at a time.

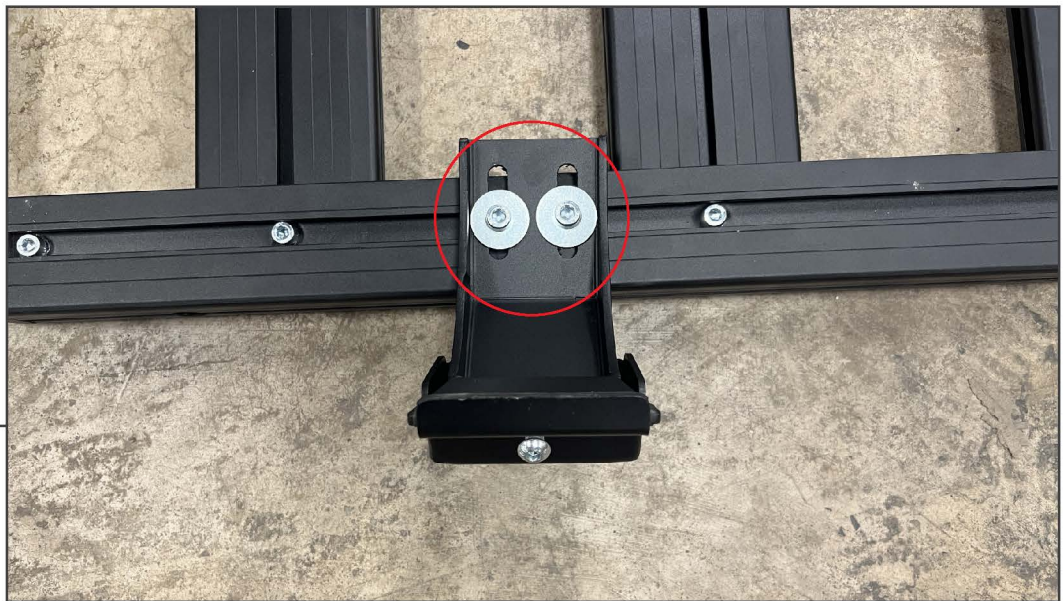
STEP 7



Fit (1) rear bracket between the hardtop and the glass hinge assembly. Secure the glass hinge to the vehicle reusing the original (2) 10mm bolts. With one bracket fully installed, repeat steps 6-7 for the remaining vehicle bracket.

Note: If the glass is out of alignment, use a plastic pry tool between the hardtop and the glass and pull the glass down into alignment.

STEP 8



Loosely secure the upper clamp brackets to each of the threaded inserts previously placed in the vertical bars using (2) M8 x 20mm cap Allen bolts, (2) M8 lock washers, and (2) M8 flat washers [large].

STEP 9

With assistance, lift the roof rack assembly onto the vehicle hardtop. Ensure all (4) mounting brackets are under the hardtop lip.

Then, loosely clamp the brackets onto the (4) upper clamp brackets previously installed using (4) M8 x 35mm button Allen bolts, (4) M8 lock washers, and (4) M8 flat washers.

STEP 10

Loosely secure the rear of the roof rack to the rear mounted brackets using (1) M8 x 20mm bolt, (1) M8 lock washer, and (1) M8 flat washer [large] per side.

STEP 11



Center the roof rack to the vehicle hardtop. Then, evenly secure all hardware securing the roof rack to the brackets. Use the included (4) M8 eyelets and (4) flat threaded inserts to utilize as additional mounting points.

If desired, install the “L” bracket to the front of the roof rack using (3) M8 raised threaded inserts, (3) M8 x 16mm Allen bolts, (3) M8 lock washers, and (3) M8 small flat washers.

Installation is now complete.