



TRAIL FORCE HD FRONT BUMPER

(2007-2018 WRANGLER JK)
(2018-2025+ WRANGLER JL)
(2020-2025+ GLADIATOR JT)

INSTALLATION INSTRUCTIONS

CONTENTS

(1) Bumper
(4) M12x1.75 Nut/Bolt Plates
(4) M12x1.75 Hex Head Bolts
(4) M12x1.75 Nuts
(8) M12 Lock Washers
(8) M12 Flat Washers
(2) Fog Light Brackets
(12) M4x0.7 15mm Allen Bolts
(12) M4x0.7 Nuts
(12) M4 Lock Washers
(20) M4 Flat Washers

TOOLS REQUIRED

Panel Removal Tool
Flat Blade Screwdriver
7, 15, 16, 18, 19mm Socket
Socket Wrench

SKU # J20850

**JK Removal
STEP 1 (JK)**

Remove the (6) Plastic pins securing the factory splash guard to the vehicle.

For JL/JT removal steps, see page 4.

STEP 2 (JK)

Next, unplug the factory fog lights and loosen the (8) nuts securing the front bumper to the vehicle. Carefully remove the bumper from the vehicle.

STEP 3 (JK)

Remove the (2) plastic push pins securing the bumper filler panel to the vehicle.

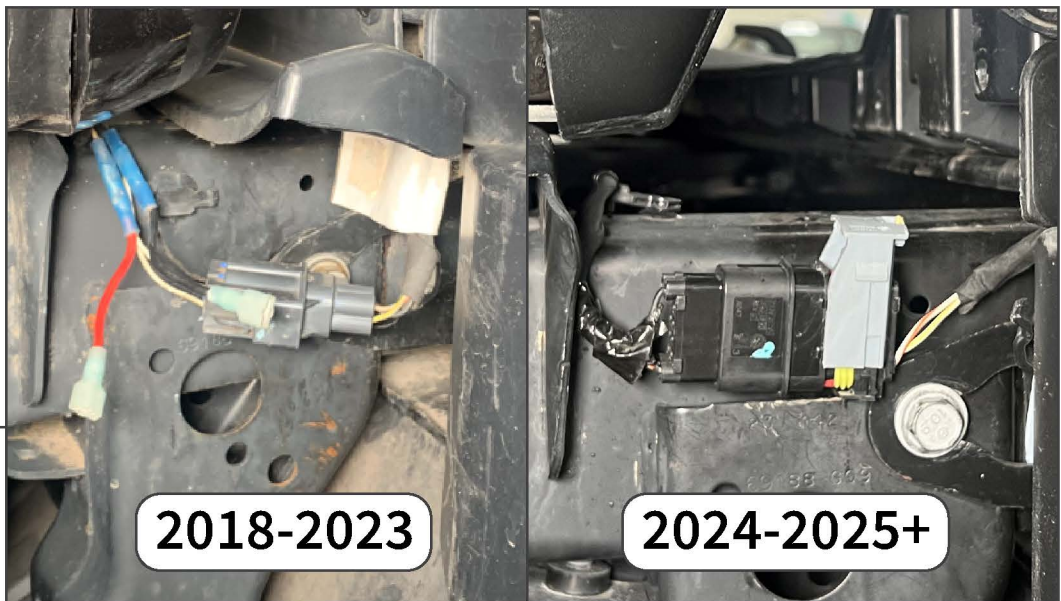
STEP 4 (JK)

Use a Phillips head screwdriver to remove the fog lights from the factory bumper.



JL/JT Removal STEP 1 (JL/JT)

Remove (8) plastic push clips from the upper bumper cover.



STEP 2 (JL/JT)

Locate the fog light wiring harness connector along the passenger side frame rail.

2018-2023 Year Vehicle: Slide the red lock back, and press the connector tab to unplug the connector.

2024-2025+ Year Vehicle: Slide the yellow lock back, and slide the gray connector latch upwards.

Removing the connector from the frame retainer may be necessary for additional working room.

STEP 3 (JL/JT)

From under the vehicle, remove (8) plastic push clips from the splash shield. Remove (2) 8mm bolts from the rear of the splash shield. Remove the splash shield from the vehicle.

STEP 4 (JL/JT)

Remove (6) plastic push clips from the bumper end cap cover. Repeat this procedure to the opposite side of the vehicle.

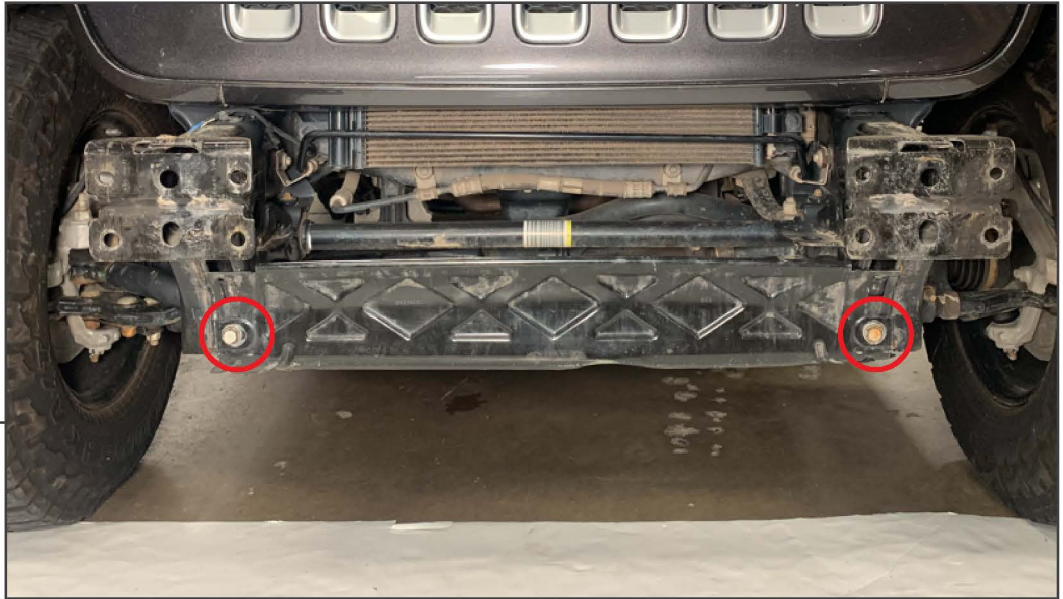
Note: Depending on vehicle trim level, end cap cover may be secured with 7mm screws.

**STEP 5 (JL/JT)**

From behind the bumper, remove (8) 18mm nuts to release the bumper from the vehicle frame. Once all hardware is removed, pull the bumper away from the vehicle and place on a workable surface.

**STEP 6 (JL/JT)**

Remove the frame rail bracket from each side of the frame rail by removing (1) 16mm bolt per bracket. Repeat this procedure for the opposite side frame rail brackets.

**STEP 7 (JL/JT)**

Remove (2) 16mm bolts from the lower metal shield, then lift upwards to unhook the shield from the vehicle.

**STEP 8 (JL/JT)**

Unplug each fog light from the fog light harness. Then, remove (4) 7mm screws from each fog light. Set the fog light aside for installation later.

**STEP 9 (JL/JT)**

Remove (8) 15mm nuts from the metal bumper core. Then, lift the core away from the bumper.

**STEP 10 (JL/JT)**

Remove the (2) bumper mounting/recovery hooks from the bumper. Then, remove the (24) 7mm screws around the perimeter of the bumper.

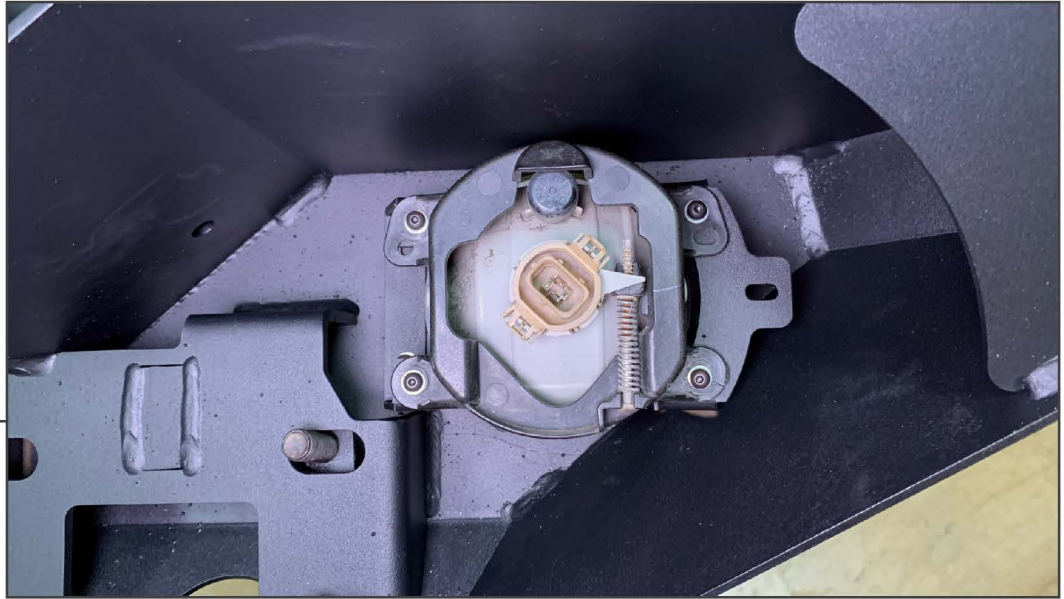
STEP 11 (JL/JT)

Lift the rear portion of the bumper away from the front portion. Use a panel removal tool to release all of the fog light harness retainers.

Set the fog light wiring harness aside for installation later.

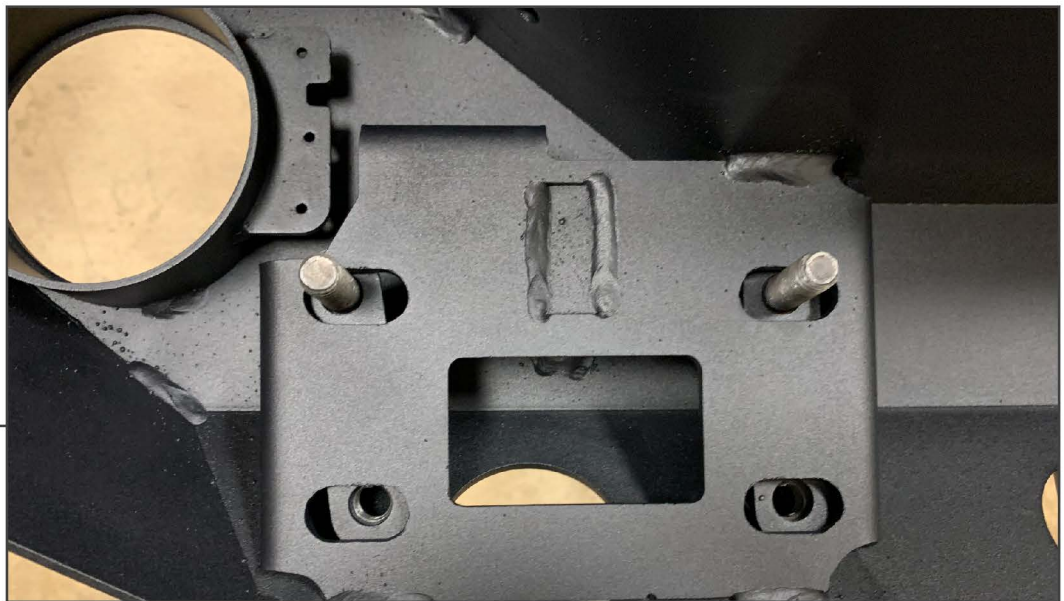
**Installation
STEP 1**

Using (2) M4 bolts, (2) M4 lock washers, and (2) M4 flat washers, attach the fog light bracket to the bumper. Repeat on both sides of the bumper.

**Installation
STEP 2**

Using (4) M4 Allen bolts, (4) M4 lock washers, (4) M4 flat washers, (4) M4 nuts, attach the fog light to the bumper and bracket installed in Step 5. Repeat for both fog lights.

Note: This step can be tedious. Take your time to fit each bolt. It is recommended to hold (1) flat washer and (1) nut to the bottom of the fog light mounting bracket hole, and carefully thread the bolt into the nut.

**Installation
STEP 3**

Place the nut/bolt plates behind the bumper mounting pad. This will allow for minor adjustment side to side. Use the included plastic stud holders to hold the studs in place.

Note: It is recommended to fold, and then unfold the plastic stud holders in half before pressing onto the stud to allow for a tighter fit to the stud.

Installation STEP 4



With help, carefully install the bumper. Secure the bumper to the vehicle using the provided M12 hardware. Re-connect the fog lights (extending the vehicle wiring harness may be required) and neatly route the harness along the vehicle.

Installation is now complete.



Installed Wrangler JK



Installed Wrangler JL