

LED HEADLIGHTS

(2007-2018 WRANGLER JK)

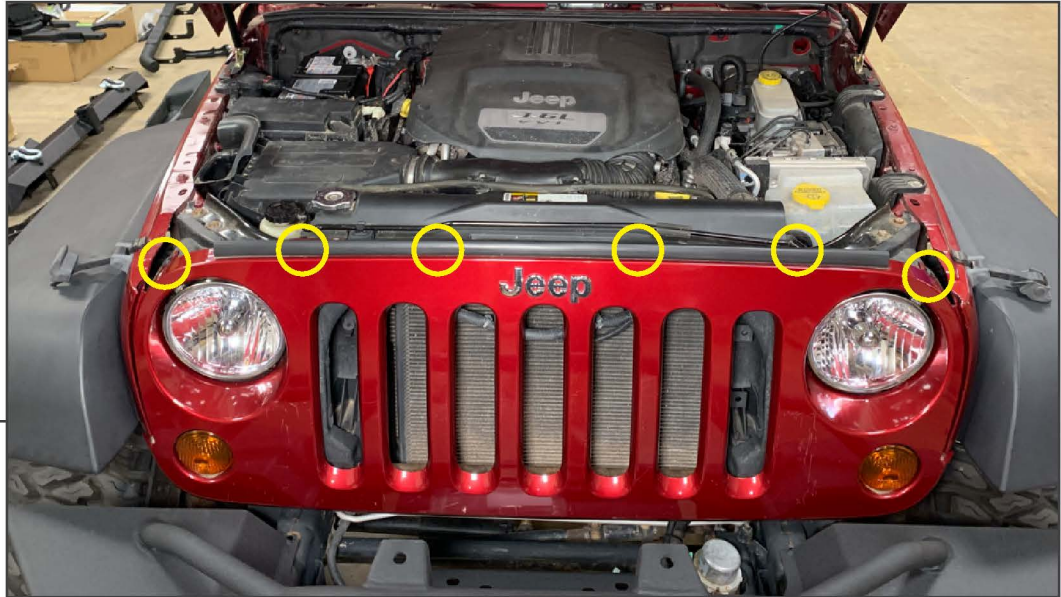
INSTALLATION INSTRUCTIONS

CONTENTS

- (2) LED Headlights
- (2) Anti-Flicker Harness
- (2) Adapter Harness
- (4) Wire Leads
- (4) Scotchlok Connectors

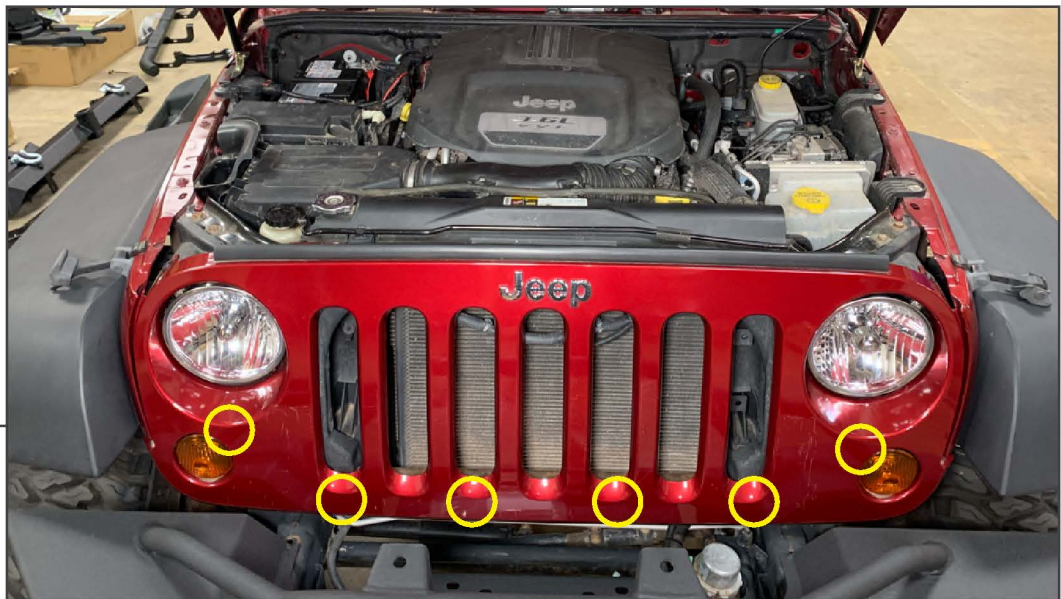
TOOLS REQUIRED

- T-15 Torx Screwdriver
- Panel Removal Tool
- Multimeter/Test Light
- Pliers



STEP 1

Open the hood of the vehicle. Remove (6) plastic push clips from the top of the grille.



STEP 2

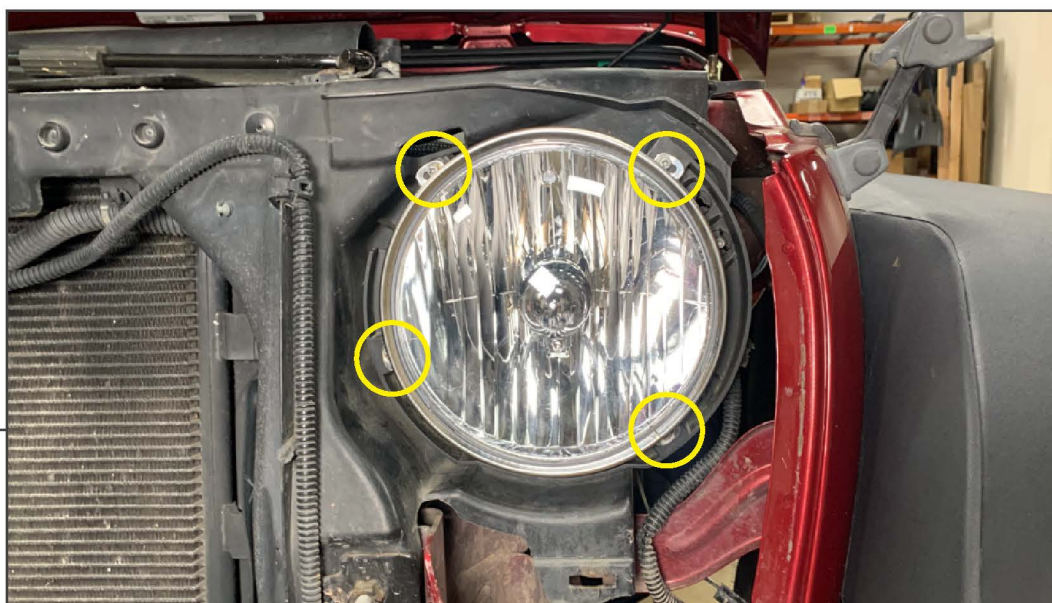
Firmly pull the lower portion of the grille to dislodge (6) metal clips securing the grille to the radiator support.



STEP 3

Twist the turn signal socket to remove the turn signal bulbs from the grille. Remove the grille from the vehicle.

Repeat this procedure to the opposite side of the vehicle.



STEP 4

Remove (4) T-15 Torx screws from the headlight retaining ring.

Repeat this step to the opposite side of the vehicle.

STEP 5



Un-plug the headlight from the vehicle. Slide the red locking tab towards the back of the connector, then press in the green plastic tab to dislodge the electrical connector from the headlight.

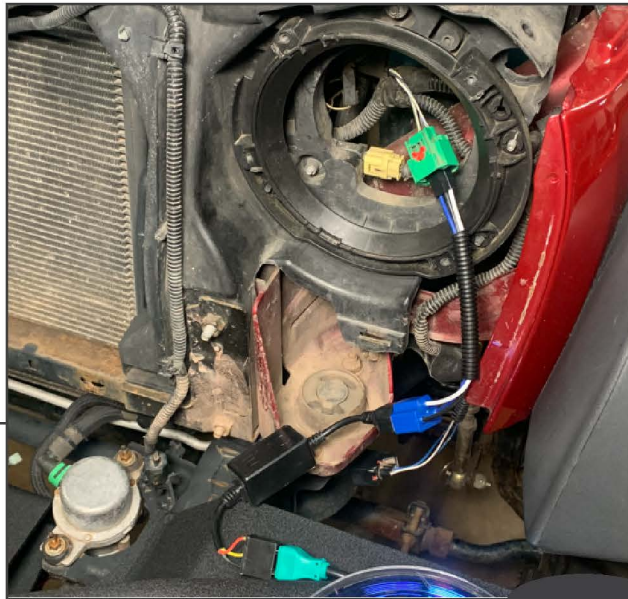
Repeat this step to the opposite side of the vehicle.

STEP 6



Assemble the headlight assembly harness. Connect (1) anti-flicker harness to the headlight assembly, following with (1) headlight adapter harness per headlight.

Connect the (2) provided wire leads to each terminal.



Red: White Halo (DRL)
Green: Amber Halo (Turn Signal)



STEP 7

Plug the new headlight harness into the original vehicle headlight connector. Ensure the harness is fully secure before sliding red locking tab into place.

Route the (2) wire leads under the headlight bucket to prepare for Halo splicing. Splice into the grille mounted DRL/Turn Signal harness using the included (2) scotchlok connectors per side. Use a multi-meter/test light to determine vehicle lighting circuits.



STEP 8

Re-assemble the vehicle following steps 1-7 in reverse order.

Installation is now complete.