

AXIAL SERIES QUATRO LED HEADLIGHTS

(2007-2018 WRANGLER JK)

INSTALLATION INSTRUCTIONS

CONTENTS

- (2) LED Headlights
- (2) Adapter Harness
- (2) Wire Leads
- (2) Scotchlok Connectors

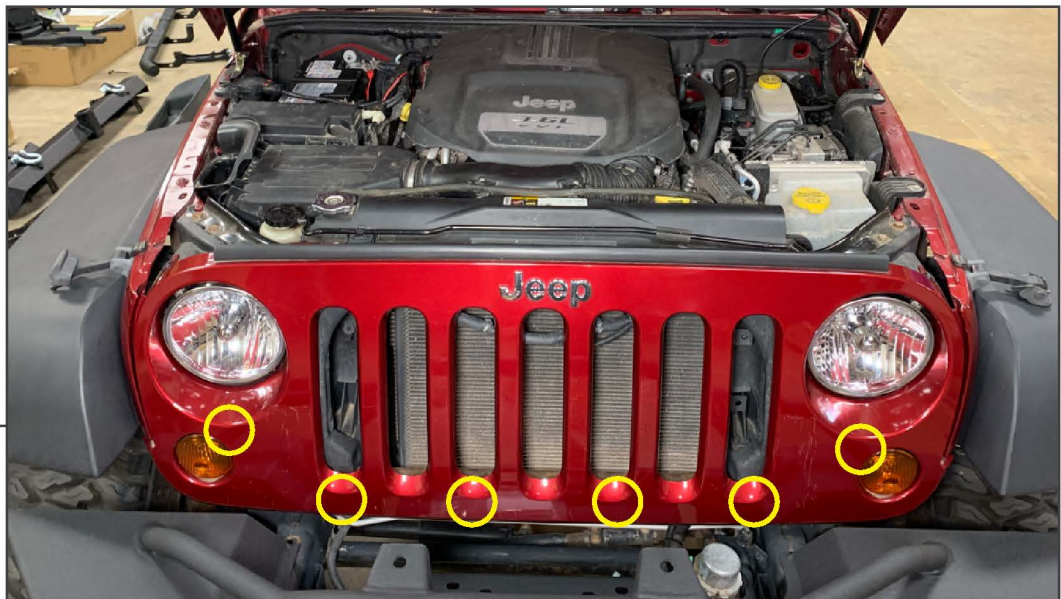
TOOLS REQUIRED

- T-15 Torx Screwdriver
- Panel Removal Tool
- Pliers



STEP 1

Open the hood of the vehicle. Remove (6) plastic push clips from the top of the grille.



STEP 2

Firmly pull the lower portion of the grille to dislodge (6) metal clips securing the grille to the radiator support.



STEP 3

Twist the turn signal socket to remove the turn signal bulbs from the grille. Remove the grille from the vehicle.

Repeat this procedure to the opposite side of the vehicle.



STEP 4

Remove (4) T-15 Torx screws from the headlight retaining ring.

Repeat this step to the opposite side of the vehicle.

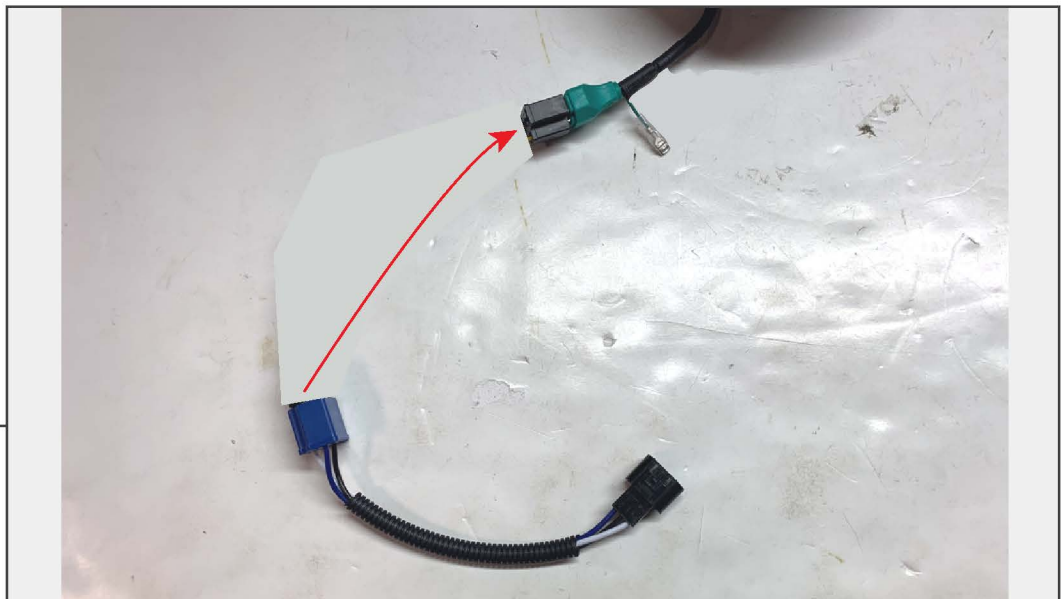
STEP 5



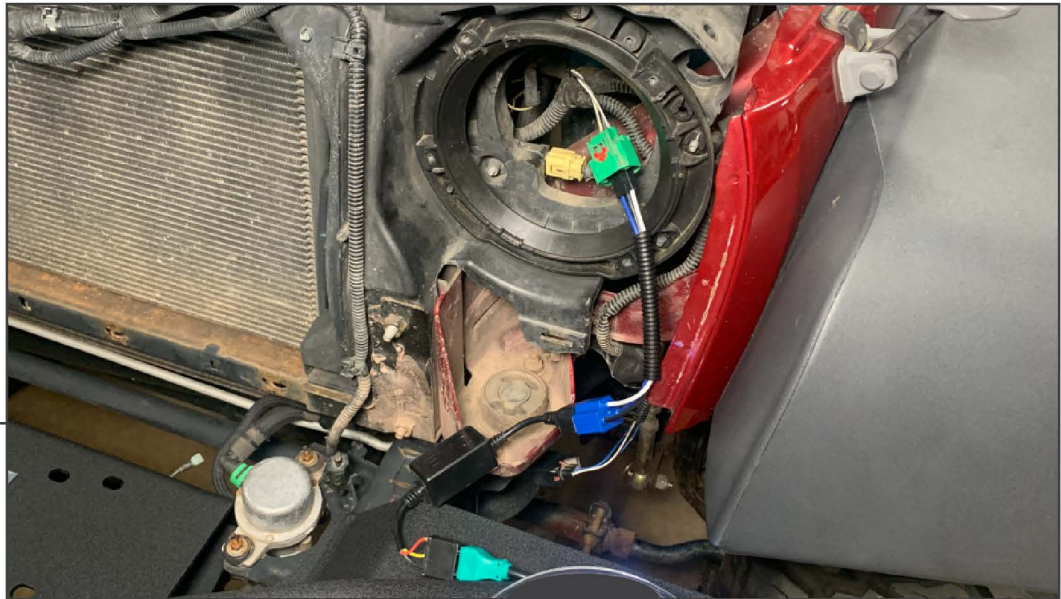
Un-plug the headlight from the vehicle. Slide the red locking tab towards the back of the connector, then press in the green plastic tab to dislodge the electrical connector from the headlight.

Repeat this step to the opposite side of the vehicle.

STEP 6



Connect (1) headlight adapter harness to each headlight.



STEP 7

Plug the new headlight harness into the original vehicle headlight connector. Route the included wire lead towards the vehicle turn signal/parking lamp.

Note: Ensure harness is fully secure before sliding red locking tab into place.



STEP 8

Splice the wire lead into the vehicle parking lamp circuit in the grille mounted lamp. Then, re-assemble the vehicle following steps 1-7 in reverse order.

- Driver's Side - White/Light Green (Middle on Connector)
- Passenger's Side - White/Tan (Middle on Connector)

Installation is now complete.