



4-WAY TRAILER WIRING HARNESS KIT

(2018-2023+ WRANGLER JL)
(2020-2023+ GLADIATOR JT)

INSTALLATION INSTRUCTIONS

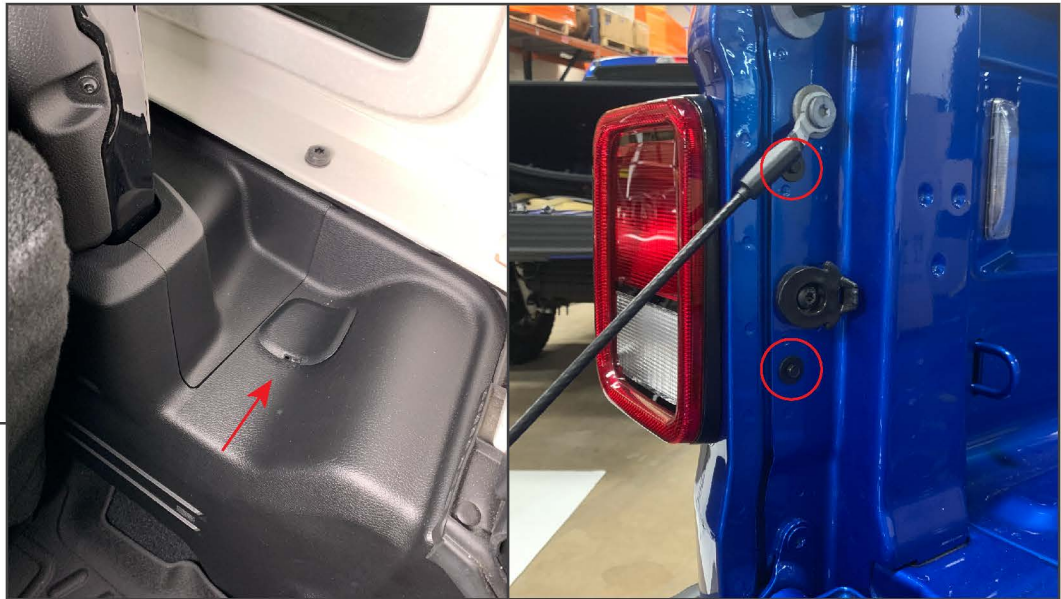
CONTENTS

- (1) Wiring Harness/Module Assembly
- (1) Fused Wire Lead
- (1) Power Wire Lead
- (2) Butt Connectors [14ga]
- (1) Ring Terminal [14ga]
- (1) Self Tapping Screw
- (10) Cable Ties
- (1) Adhesive Mounting Pad

TOOLS REQUIRED

- 8mm, 10mm Socket
- Ratchet
- Wire Crimper/Stripper
- Sanding Paper
- Isopropyl Alcohol

SKU # J191263
Edited: 10/20/2023



STEP 1

Wrangler JL: Remove the interior plastic cover inside the vehicle, and remove (1) 10mm bolt from the tail light. Firmly pull the tail light away from the vehicle.

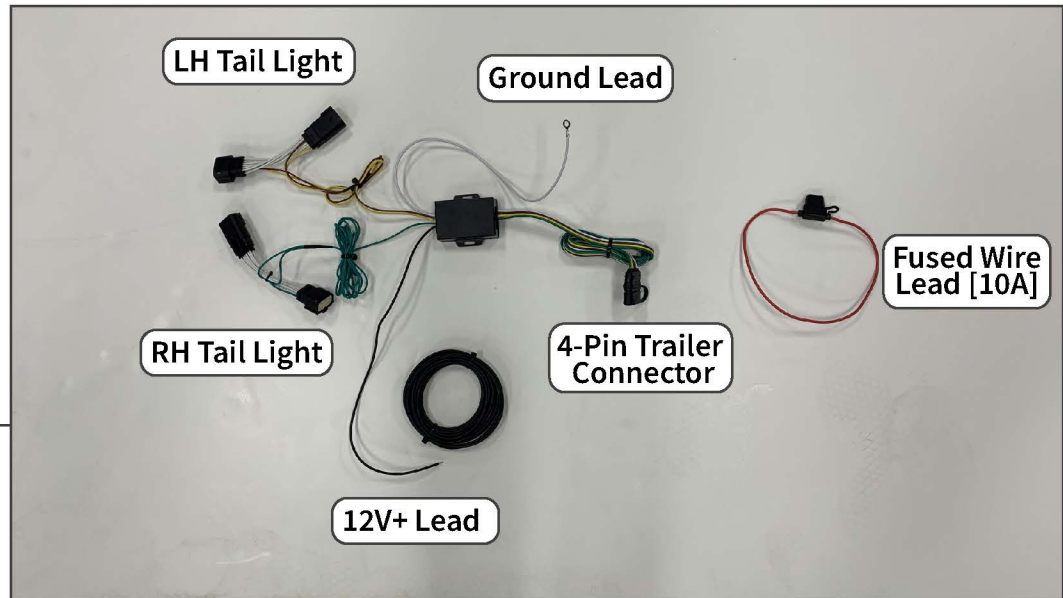
Gladiator JT: Lower the tailgate and remove (2) 8mm bolts from the tail light. Firmly pull the tail light away from the vehicle.



STEP 2

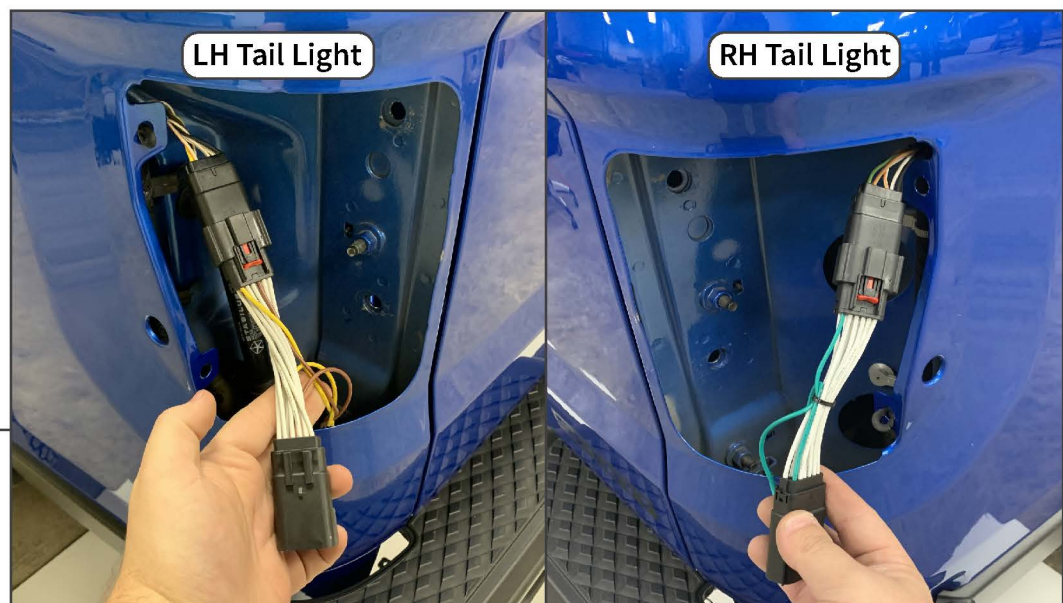
Slide the red connector lock back, and then press the connector and unplug the tail light connection. Set each tail light aside.

STEP 3



Lay out and identify each section of the wiring harness assembly.

STEP 4



Route each wiring harness upwards into the tail light cutout from under the vehicle. Plug the wiring harnesses into each vehicle tail light connector. Then, re-install the vehicle tail lights using the OEM hardware. Ensure all electrical connections are complete and secure. Route the harnesses neatly across the vehicle and secure using the included cable ties.

- LH Tail Light Harness - Yellow/Brown Leads
- RH Tail Light Harness - Green Lead

STEP 5



Connect the fuse tap to the black wire lead using (1) included butt connector. Beginning at the vehicle battery, route the black wire neatly across the engine bay to the driver's side of the vehicle, then neatly route the wire along the vehicle frame towards the driver's side tail light. Ensure the wire is away from any hot/moving components, secure away using the provided cable ties.

Connect the previously routed wire to the Black wire lead on the trailer light module using (1) included butt connector.

STEP 6



Secure the white wire lead to a suitable chassis ground. If necessary, clean the vehicle frame using sanding paper, and use the included self tapping screw to create a chassis ground.

Secure the trailer light module to the vehicle body using the included double sided adhesive pad. Re-install the vehicle tail lights reusing the OEM hardware. Installation is now complete.