



HD DRAG LINK

(2018-2023+ WRANGLER JL)

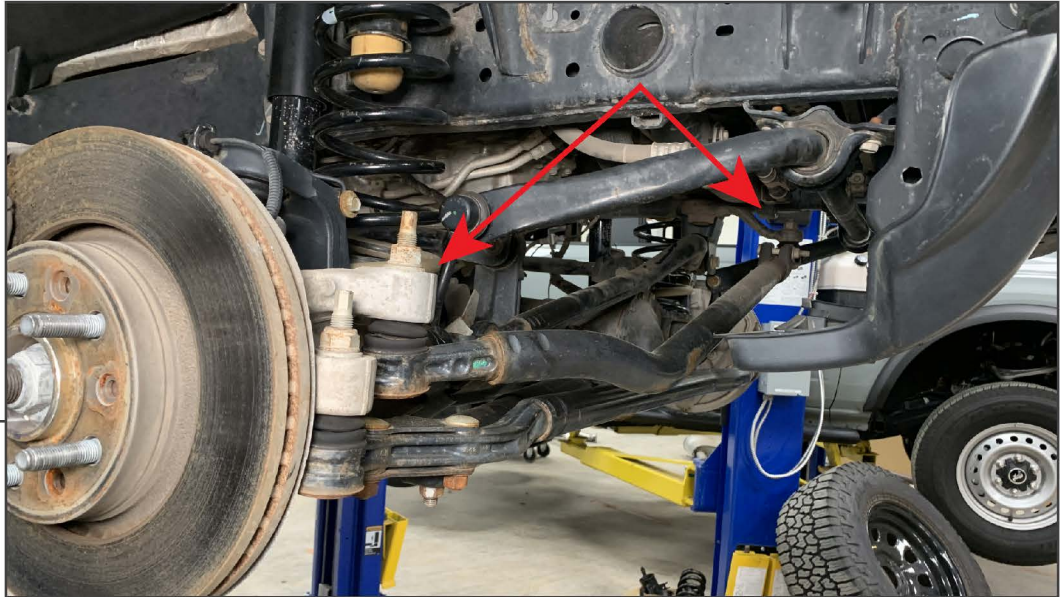
INSTALLATION INSTRUCTIONS

CONTENTS

- (1) Drag Link
- (2) Drag Link Tie Rod Ends
- (2) 1/2-20 x 1.75" Bolts
- (2) 1/2-20 Lock Nuts
- (2) Castle Nuts
- (2) Cotter Pins
- (2) Zerk Grease Fittings

TOOLS REQUIRED

- 19mm, 21mm, 22mm
Wrenches/Sockets
- Ratchet
- Pickle Fork
- Hammer
- Floor Jack
- Jack Stands



STEP 1

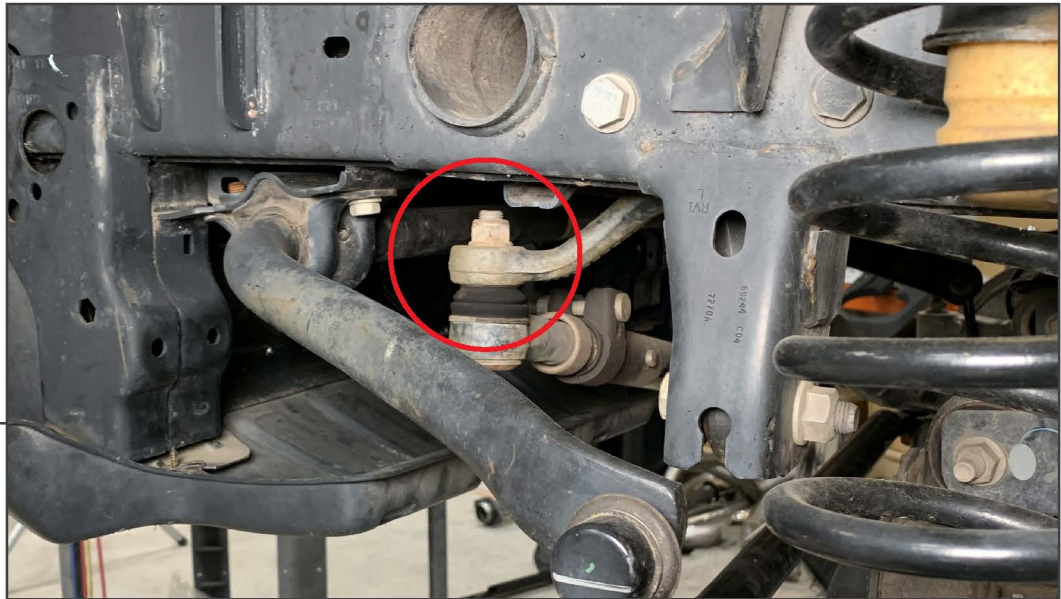
Safely lift and support the vehicle using a floor jack and jack stands. Remove the front wheels. Turn the wheels to the right slightly, this will assist drag link removal later.

Locate the steering drag link connecting the pitman arm to the passenger side steering knuckle.



STEP 2

Loosen, but do not remove, the 21mm drag link nut from the steering knuckle. Use a hammer and a pickle fork to dislodge the joint connection while leaving the nut loose. Do not remove the nut at this time.



STEP 3

Loosen, but do not remove, the 21mm drag link nut from the pitman arm. Use a hammer and a pickle fork to dislodge the joint connection while leaving the nut loose.

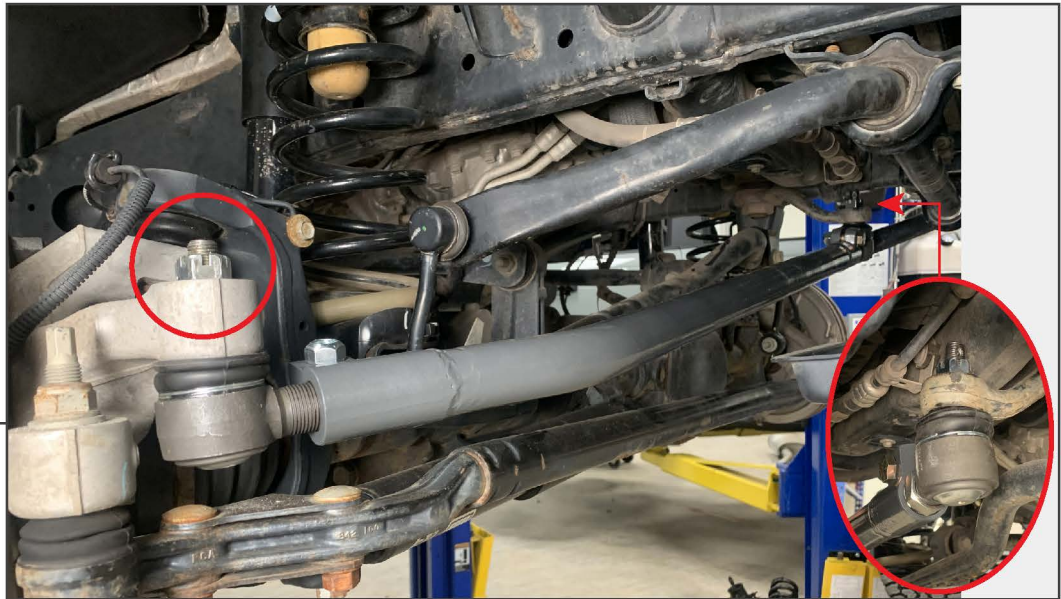
With both drag link ends disconnected from the pitman arm/steering knuckle, remove the (2) 21mm nuts and remove the drag link from the vehicle.



STEP 4

Measure the distance from the pitman arm to the passenger side steering knuckle, and adjust the tie rod ends on the new drag link evenly until the original measurement is achieved. Loosely secure the tie rod ends into place using the included 1/2-20 bolts, the tie rods may need slight adjustments during installation.

Note: The pitman arm side uses a sleeve to secure the tie rod end. Ensure the slot in the sleeve aligns with the slot in the drag link, reference the photo. The alignment is important to ensure proper locking.



STEP 5

Fit the drag link to the vehicle, ensuring the curved end of the drag link is towards the passenger's side of the vehicle. Secure each tie rod end to the vehicle steering components using the included (2) castle nuts and (2) cotter pins.



STEP 6

Using an adjustable wrench, secure the zerk grease fittings into the tie rod ends, and grease the joints using synthetic grease. Joints should be checked periodically to prevent premature wear.

Finalize tie rod adjustments, and tighten all 1/2-20 hardware to 90 ft. lbs. to lock the tie rods into place.

Installation is now complete.